

# Converting Colors

Decimal(14236784)

Have a look what the booklet for  
Decimal(14236784) contains.

<b>Decimal(14236784)</b> .....	3
<i><b>Conversions</b></i> .....	4
<i><b>Details</b></i> .....	6
<i><b>Harmonies</b></i> .....	11
<i><b>Previews</b></i> .....	23
<i><b>Color Blindness Simulation</b></i> .....	26
<i><b>CSS Examples</b></i> .....	29

# Color

**Decimal(14236784)**

# Conversions

## Conversions Part 1

<b>Format</b>	<b>Color</b>
Hex	D93C70
RGB	217, 60, 112
RGB Percent	85%, 24%, 44%
CMY	0.1490, 0.7647, 0.5608
CMYK	0.00, 0.72, 0.48, 0.15
HSL	340°, 67%, 54%
HSV	340°, 72%, 85%
XYZ	33.1558, 19.1533, 17.2787
YIQ	112.8710, 76.8800, 49.4560

# Conversions

## Conversions Part 2

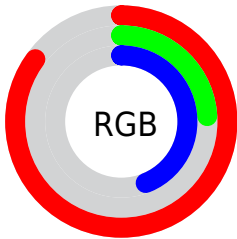
<b>Format</b>	<b>Color</b>
<a href="#">RYB</a>	217, 60, 112
Decimal	14236784
CIELab	50.87, 63.76, 7.01
CIELCh	51, 64.142, 6.271
Yxy	19.1533, 0.4765, 0.2752
Android (android.graphics.Color)	4292426864 (0xFFD93C70)
YUV	112.8710, -0.4294, 91.3211
Hunter-Lab	43.7645, 58.6430, 7.2268

# Details

The Decimal color **14236784** is a dark color, and the websafe version is hex **CC3366**. The color can be described as dark muted rose. A complement of this color would be **3987877**, and the grayscale version is **7434609**.

A 20% lighter version of the original color is **16742307**, and **10223681** is the 20% darker color. If you saturate the color by 10%, you get **14231137**, and if you desaturate by 10%, it is **14242431**.

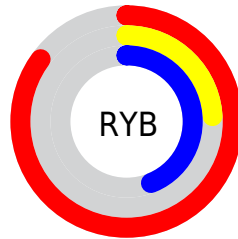
# Distribution



Red (85%)

Green (24%)

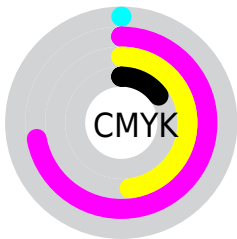
Blue (44%)



Red (85%)

Yellow (24%)

Blue (44%)

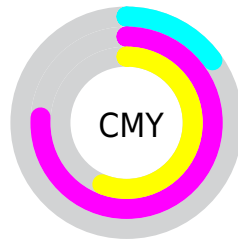


Cyan (0%)

Magenta (72%)

Yellow (48%)

Black (15%)



Cyan (15%)

Magenta (76%)

Yellow (56%)

# Brightness & Saturation Gradients

These gradients show how the Decimal color 14236784 changes by changing the brightness by 10 percent. The first figure shows a shift by +10% for each color and the second figure -10%.

Similar to the brightness gradients but the following saturation gradients show a change of the Decimal color 14236784 by changing the saturation by 10% instead.



 14236784

 14236784

16777215

 12195416

 16742307

 10223681

 16749758

 8257579

 16756954

 6357015

 16764407

 4587523

 16772095

 2490369

 0

 14236784

 14236784

 14231137

 14242431

■ 14225747

■ 14247821

■ 14221384

■ 14253468

■ 14259114

■ 14264505

■ 14270151

■ 14275798

■ 14281444

■ 14286835

# Harmonies

## Analogous

The Analogous color harmony consists of three colors that are next to each other on the color wheel.



12798374



14236784



13782075

# Triad

The Triadic color harmony groups three colors that are evenly spaced from another and form a triangle on the color wheel.



14236784



5081102



35549

# Complementary

The Complementary color scheme is a pair of colors which are on the opposite of each other on the color wheel.



14236784



3987877

# Split Complementary

Split-complementary colors differ from the complementary color scheme. The scheme consists of three colors, the original color and two neighbors of the complement color.



37305



14236784



36682

# Square

The Square scheme is like the rectangle color scheme, but the four colors are evenly spaced on the color wheel.



14236784



8944128



37507



31975

# Rectangle

The Rectangle color scheme consists of four colors that form a rectangle on the color wheel.



14236784



12606745



37507



36308



# Sweetspot

The Sweet Spot groups the original color and five complimentary colors.



14236784



16762841



10829017



8412777



0



8421504



# Same Dimension

The Same Dimension uses a secret algorithm to generate beautiful new colors.



14236784



16720235



14243388



7234406



11337785



3014671



# Inverse Universe

The Inverse Universe completely reimagines the original color for something new.



14236784



16720235



3981273



7234406



11337785



3014671



# Previews

## White Background



This preview shows how the Decimal color 14236784 looks on a white background.

## Color Contrast Check

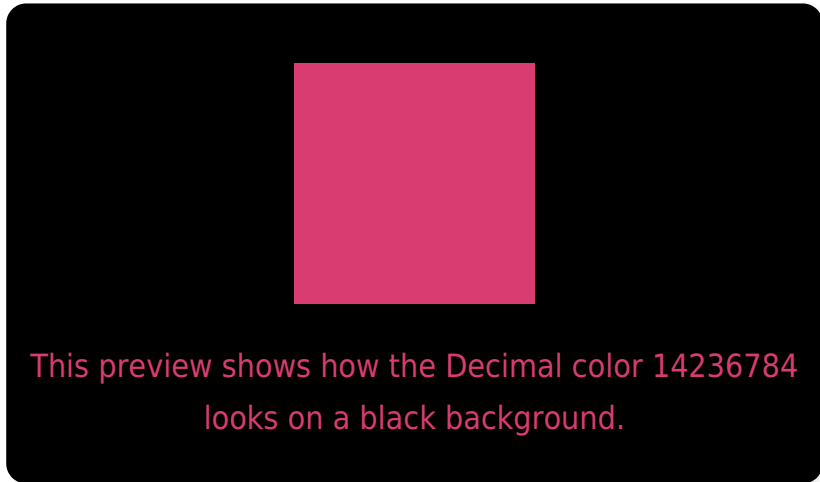
Large Text (above 18pt) WCAG AA ✓ Pass

Any Text WCAG AA × Fail

Large Text (above 18pt) WCAG AAA × Fail

Any Text WCAG AAA × Fail

# Black Background



## Color Contrast Check

Large Text (above 18pt) WCAG AA ✓ Pass

Any Text WCAG AA ✓ Pass

Large Text (above 18pt) WCAG AAA ✓ Pass

Any Text WCAG AAA × Fail

If you want to check with other color combinations, try the [Color Contrast Checker](#).



## Decimal 14236784 Background



This preview shows how black text looks on a background with the Decimal color 14236784.




This preview shows how white text looks on a background with the Decimal color 14236784.

# Color Blindness Simulation

Color vision deficiency is a very complex topic, and I could not describe the different causes any better than Wikipedia does, so if you want to learn more, you should check out their [article about color blindness](#).

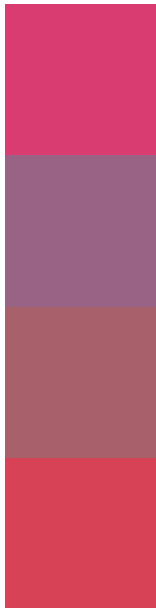
## Dichromacy





**Tritanopia**  
14107977

# Trichromacy



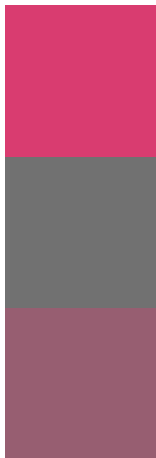
**Original Color**  
14236784

**Protanomaly**  
10052486

**Deuteranomaly**  
11034731

**Tritanomaly**  
14172759

# Monochromacy



**Original Color**  
14236784

**Achromatopsia**  
7434609

**Achromatomaly**  
9920113

# CSS Examples

## Text

The CSS property to change the color of the text to Decimal 14236784 is called "color". The color property can be set on classes, ids or directly on the HTML element.

This example shows how text in the color #D93C70 looks like.

```
.text, #text, p{  
    color:#D93C70  
}
```

If you want to add a text shadow in that color use the text-shadow property, you can generate a text shadow directly with our [CSS Text Shadow Generator](#).

Here you see how black text with a 4 pixel #D93C70 colored shadow looks like.

```
.shadow{ text-shadow: 4px 4px 2px #D93C70
}
```

## Border

The CSS property to change the border of an element to Decimal 14236784 is called "border". The border property can be set on classes, ids or directly on the HTML element.

This example shows the color as border, it can be applied via the CSS property "border" or "border-color".

```
.border, #border, table{ border:4px solid
#D93C70 }
```

If only the border color should be changed use the property `border-color`.

```
.border{ border-color:#D93C70 }
```

If you want to add a box shadow in that color use:

Here you see how a box with a 4 pixel #D93C70 colored shadow looks like.

```
.boxshadow{ -moz-box-shadow:4px 4px 4px  
4px #D93C70; -webkit-box-shadow:4px 4px  
4px 4px #D93C70; box-shadow:4px 4px 4px  
4px #D93C70 }
```

# Background

The CSS property to change the background color of an element to Decimal 14236784 is called "background". The background property can be set on classes, ids or directly on the HTML element.

```
.background, #background, body{  
background:#D93C70 }
```

If only the background color should be changed can be used:

```
.background{ background-color:#D93C70 }
```

This example shows the color as background, it is applied via the CSS property "background".

To optimize and compress your CSS code, you can use our [online CSS compressor and optimizer](#) based on csstidy. If you want to create a linear or radial gradient as background or border, check our [CSS Gradient Generator](#).



Hey! You found this booklet interesting? Support Converting Colors with the new Membership Option!

The pro membership hides all ads, plus gives you double the colors in the color bucket, and more awesome pro features!

**[Learn more, Memberships starting at \\$2.50/m!](#)**

**Follow me  
on Twitter!**

@ConvertingColor