

Converting Colors

Decimal(14251409)

Have a look what the booklet for
Decimal(14251409) contains.

Decimal(14251409)	3
<i>Conversions</i>	4
<i>Details</i>	6
<i>Harmonies</i>	11
<i>Previews</i>	23
<i>Color Blindness Simulation</i>	26
<i>CSS Examples</i>	29

Color

Decimal(14251409)

Conversions

Conversions Part 1

Format	Color
Hex	D97591
RGB	217, 117, 145
RGB Percent	85%, 46%, 57%
CMY	0.1490, 0.5412, 0.4314
CMYK	0.00, 0.46, 0.33, 0.15
HSL	343°, 57%, 65%
HSV	343°, 46%, 85%
XYZ	40.0874, 29.5186, 30.3729
YIQ	150.0920, 50.6120, 29.9080

Conversions

Conversions Part 2

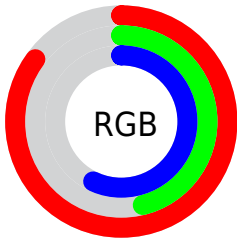
Format	Color
RYB	217, 117, 145
Decimal	14251409
CIELab	61.24, 42.05, 2.49
CIElCh	61, 42.124, 3.386
Yxy	29.5186, 0.4010, 0.2952
Android (android.graphics.Color)	4292441489 (0xFFD97591)
YUV	150.0920, -2.5104, 58.6783
Hunter-Lab	54.3310, 36.6244, 4.8866

Details

The Decimal color **14251409** is a light color, and the websafe version is hex **CC6699**. A complement of this color would be **7723453**, and the grayscale version is **9868950**.

A 20% lighter version of the original color is **16755655**, and **10436959** is the 20% darker color. If you saturate the color by 10%, you get **14245761**, and if you desaturate by 10%, it is **14257057**.

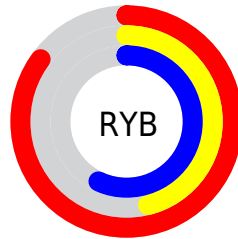
Distribution



Red (85%)

Green (46%)

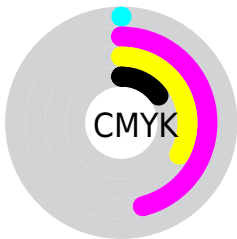
Blue (57%)



Red (85%)

Yellow (46%)

Blue (57%)

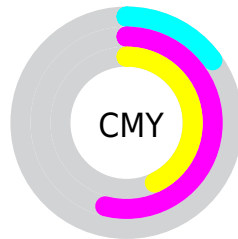


Cyan (0%)

Magenta (46%)

Yellow (33%)

Black (15%)



Cyan (15%)

Magenta (54%)

Yellow (43%)

Brightness & Saturation Gradients

These gradients show how the Decimal color 14251409 changes by changing the brightness by 10 percent. The first figure shows a shift by +10% for each color and the second figure -10%.

Similar to the brightness gradients but the following saturation gradients show a change of the Decimal color 14251409 by changing the saturation by 10% instead.

 14251409

 14251409

16777215

 12344183

 16755655

 10436959

 16762851

 8595271

 16770303

 6817585

 5046300

 3538945

 720896

 0

 14251409

 14251409

 14245761

 14257057

 14240370

 14262448

 14234722

 14268096

 14229075

 14273743

 14223683

 14279391

 14221373

 14284783

 14286846

 14286847

Harmonies

Analogous

The Analogous color harmony consists of three colors that are next to each other on the color wheel.



13007798



14251409



14187117

Triad

The Triadic color harmony groups three colors that are evenly spaced from another and form a triangle on the color wheel.



14251409



8429140



41174

Complementary

The Complementary color scheme is a pair of colors which are on the opposite of each other on the color wheel.



14251409



7723453

Split Complementary

Split-complementary colors differ from the complementary color scheme. The scheme consists of three colors, the original color and two neighbors of the complement color.



42684



14251409



5219441

Square

The Square scheme is like the rectangle color scheme, but the four colors are evenly spaced on the color wheel.



14251409



10982215



42903



6199006

Rectangle

The Rectangle color scheme consists of four colors that form a rectangle on the color wheel.



14251409



13467993



42903



41935

Sweetspot

The Sweet Spot groups the original color and five complimentary colors.



14251409



16767973



12416473



8415856



0



8421504

Same Dimension

The Same Dimension uses a secret algorithm to generate beautiful new colors.



14251409



16741274



14257013



7234406



11337777



3014669

Inverse Universe

The Inverse Universe completely reimagines the original color for something new.



14251409



16741274



7717849



7234406



11337777



3014669

Previews

White Background



This preview shows how the Decimal color 14251409 looks on a white background.

Color Contrast Check

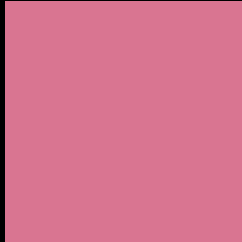
Large Text (above 18pt) WCAG AA ✓ Pass

Any Text WCAG AA × Fail

Large Text (above 18pt) WCAG AAA × Fail

Any Text WCAG AAA × Fail

Black Background



This preview shows how the Decimal color 14251409 looks on a black background.

Color Contrast Check

Large Text (above 18pt) WCAG AA ✓ Pass

Any Text WCAG AA ✓ Pass

Large Text (above 18pt) WCAG AAA ✓ Pass

Any Text WCAG AAA × Fail

If you want to check with other color combinations, try the [Color Contrast Checker](#).

Decimal 14251409 Background



This preview shows how black text looks on a background with the Decimal color 14251409.




This preview shows how white text looks on a background with the Decimal color 14251409.

Color Blindness Simulation

Color vision deficiency is a very complex topic, and I could not describe the different causes any better than Wikipedia does, so if you want to learn more, you should check out their [article about color blindness](#).

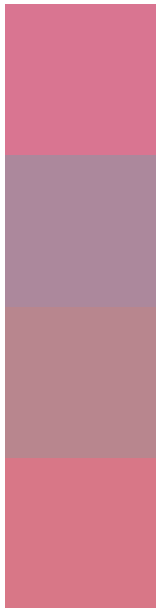
Dichromacy





Tritanopia
14186625

Trichromacy



Original Color
14251409

Protanomaly
11307164

Deuteranomaly
12093070

Tritanomaly
14186375

Monochromacy



Original Color
14251409

Achromatopsia
9868950

Achromatomaly
11438740

CSS Examples

Text

The CSS property to change the color of the text to Decimal 14251409 is called "color". The color property can be set on classes, ids or directly on the HTML element.

This example shows how text in the color #D97591 looks like.

```
.text, #text, p{  
    color:#D97591  
}
```

If you want to add a text shadow in that color use the text-shadow property, you can generate a text shadow directly with our [CSS Text Shadow Generator](#).

Here you see how black text with a 4 pixel #D97591 colored shadow looks like.

```
.shadow{ text-shadow: 4px 4px 2px #D97591
}
```

Border

The CSS property to change the border of an element to Decimal 14251409 is called "border". The border property can be set on classes, ids or directly on the HTML element.

This example shows the color as border, it can be applied via the CSS property "border" or "border-color".

```
.border, #border, table{ border:4px solid
#D97591 }
```

If only the border color should be changed use the property border-color.

```
.border{ border-color:#D97591 }
```

If you want to add a box shadow in that color use:

Here you see how a box with a 4 pixel #D97591 colored shadow looks like.

```
.boxshadow{ -moz-box-shadow:4px 4px 4px  
4px #D97591; -webkit-box-shadow:4px 4px  
4px 4px #D97591; box-shadow:4px 4px 4px  
4px #D97591 }
```

Background

The CSS property to change the background color of an element to Decimal 14251409 is called "background". The background property can be set on classes, ids or directly on the HTML element.

```
.background, #background, body{  
background:#D97591 }
```

If only the background color should be changed can be used:

```
.background{ background-color:#D97591 }
```

This example shows the color as background, it is applied via the CSS property "background".

To optimize and compress your CSS code, you can use our [online CSS compressor and optimizer](#) based on csstidy. If you want to create a linear or radial gradient as background or border, check our [CSS Gradient Generator](#).

Hey! You found this booklet interesting? Support Converting Colors with the new Membership Option!

The pro membership hides all ads, plus gives you double the colors in the color bucket, and more awesome pro features!

[Learn more, Memberships starting at \\$2.50/m!](#)

**Follow me
on Twitter!**

@ConvertingColor