

Converting Colors

Decimal(14252712)

Have a look what the booklet for
Decimal(14252712) contains.

Decimal(14252712)	3
<i>Conversions</i>	4
<i>Details</i>	6
<i>Harmonies</i>	11
<i>Previews</i>	23
<i>Color Blindness Simulation</i>	26
<i>CSS Examples</i>	29

Color

Decimal(14252712)

Conversions

Conversions Part 1

Format	Color
Hex	D97AA8
RGB	217, 122, 168
RGB Percent	85%, 48%, 66%
CMY	0.1490, 0.5216, 0.3412
CMYK	0.00, 0.44, 0.23, 0.15
HSL	331°, 56%, 66%
HSV	331°, 44%, 85%
XYZ	42.6427, 31.4979, 40.8780
YIQ	155.6490, 41.8540, 34.4460

Conversions

Conversions Part 2

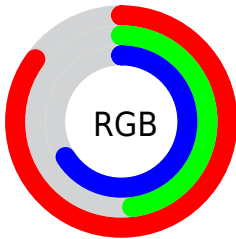
Format	Color
R _Y B	217, 122, 168
Decimal	14252712
CIE Lab	62.93, 42.57, -8.20
CIE LCh	63, 43.356, 349.096
Yxy	31.4979, 0.3707, 0.2739
Android (android.graphics.Color)	4292442792 (0xFFD97AA8)
YUV	155.6490, 6.0890, 53.8048
Hunter-Lab	56.1230, 37.4103, -3.8986

Details

The Decimal color **14252712** is a light color, and the websafe version is hex **CC6699**. A complement of this color would be **8051115**, and the grayscale version is **10263708**.

A 20% lighter version of the original color is **16756959**, and **10503796** is the 20% darker color. If you saturate the color by 10%, you get **14247069**, and if you desaturate by 10%, it is **14258355**.

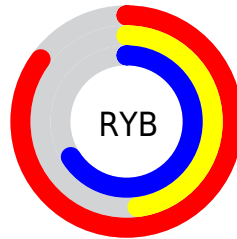
Distribution



Red (85%)

Green (48%)

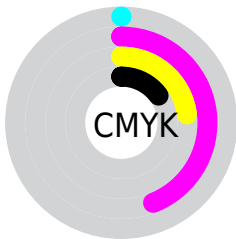
Blue (66%)



Red (85%)

Yellow (48%)

Blue (66%)

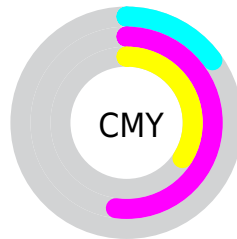


Cyan (0%)

Magenta (44%)

Yellow (23%)

Black (15%)



Cyan (15%)

Magenta (52%)

Yellow (34%)

Brightness & Saturation Gradients

These gradients show how the Decimal color 14252712 changes by changing the brightness by 10 percent. The first figure shows a shift by +10% for each color and the second figure -10%.

Similar to the brightness gradients but the following saturation gradients show a change of the Decimal color 14252712 by changing the saturation by 10% instead.

 14252712

 14252712

16777215

 12345486

 16756959

 10503796

 16764156

 8662107

 16771583

 6885188

 5177390

 3604505

 1638401

 0

 14252712

 14252712

 14247069

 14258355

 14241682

 14263742

 14236038

 14269386

 14230395

 14275029

 14225008

 14280672

 14221417

 14286059

 14286838

 14286847

Harmonies

Analogous

The Analogous color harmony consists of three colors that are next to each other on the color wheel.



12223947



14252712



14842497

Triad

The Triadic color harmony groups three colors that are evenly spaced from another and form a triangle on the color wheel.



14252712



9936461



43474

Complementary

The Complementary color scheme is a pair of colors which are on the opposite of each other on the color wheel.



14252712



8051115

Split Complementary

Split-complementary colors differ from the complementary color scheme. The scheme consists of three colors, the original color and two neighbors of the complement color.



44208



14252712



7054948

Square

The Square scheme is like the rectangle color scheme, but the four colors are evenly spaced on the color wheel.



14252712



12357963



2796424



3252451

Rectangle

The Rectangle color scheme consists of four colors that form a rectangle on the color wheel.



14252712



14450538



2796424



43720

Sweetspot

The Sweet Spot groups the original color and five complimentary colors.



14252712



16768750



11172569



8416117



0



8421504

Same Dimension

The Same Dimension uses a secret algorithm to generate beautiful new colors.



14252712



16742585



14252666



7234408



11337812



3014678

Inverse Universe

The Inverse Universe completely reimagines the original color for something new.



14252712



16742585



8051161



7234408



11337812



3014678

Previews

White Background



This preview shows how the Decimal color 14252712 looks on a white background.

Color Contrast Check

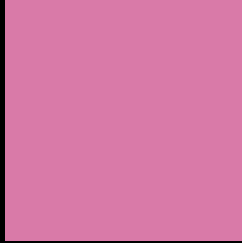
Large Text (above 18pt) WCAG AA × Fail

Any Text WCAG AA × Fail

Large Text (above 18pt) WCAG AAA × Fail

Any Text WCAG AAA × Fail

Black Background



This preview shows how the Decimal color 14252712 looks on a black background.

Color Contrast Check

Large Text (above 18pt) WCAG AA ✓ Pass

Any Text WCAG AA ✓ Pass

Large Text (above 18pt) WCAG AAA ✓ Pass

Any Text WCAG AAA ✓ Pass

If you want to check with other color combinations, try the [Color Contrast Checker](#).

Decimal 14252712 Background



This preview shows how black text looks on a background with the Decimal color 14252712.



This preview shows how white text looks on a background with the Decimal color 14252712.

Color Blindness Simulation

Color vision deficiency is a very complex topic, and I could not describe the different causes any better than Wikipedia does, so if you want to learn more, you should check out their [article about color blindness](#).

Dichromacy



Original Color
14252712

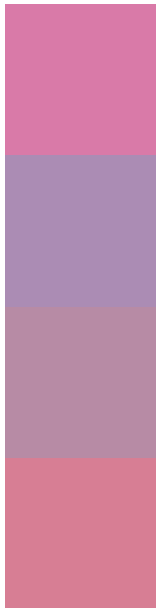
Protanopia
9541563

Deuteranopia
10720419



Tritanopia
14057609

Trichromacy



Original Color
14252712

Protanomaly
11242676

Deuteranomaly
12028837

Tritanomaly
14122644

Monochromacy



Original Color
14252712

Achromatopsia
10263708

Achromatomaly
11702432

CSS Examples

Text

The CSS property to change the color of the text to Decimal 14252712 is called "color". The color property can be set on classes, ids or directly on the HTML element.

This example shows how text in the color #D97AA8 looks like.

```
.text, #text, p{  
    color:#D97AA8  
}
```

If you want to add a text shadow in that color use the text-shadow property, you can generate a text shadow directly with our [CSS Text Shadow Generator](#).

Here you see how black text with a 4 pixel #D97AA8 colored shadow looks like.

```
.shadow{ text-shadow: 4px 4px 2px #D97AA8
}
```

Border

The CSS property to change the border of an element to Decimal 14252712 is called "border". The border property can be set on classes, ids or directly on the HTML element.

This example shows the color as border, it can be applied via the CSS property "border" or "border-color".

```
.border, #border, table{ border:4px solid
#D97AA8 }
```

If only the border color should be changed use the property `border-color`.

```
.border{ border-color:#D97AA8 }
```

If you want to add a box shadow in that color use:

Here you see how a box with a 4 pixel #D97AA8 colored shadow looks like.

```
.boxshadow{ -moz-box-shadow:4px 4px 4px  
4px #D97AA8; -webkit-box-shadow:4px 4px  
4px 4px #D97AA8; box-shadow:4px 4px 4px  
4px #D97AA8 }
```

Background

The CSS property to change the background color of an element to Decimal 14252712 is called "background". The background property can be set on classes, ids or directly on the HTML element.

```
.background, #background, body{  
background:#D97AA8 }
```

If only the background color should be changed can be used:

```
.background{ background-color:#D97AA8 }
```

This example shows the color as background, it is applied via the CSS property "background".

To optimize and compress your CSS code, you can use our [online CSS compressor and optimizer](#) based on csstidy. If you want to create a linear or radial gradient as background or border, check our [CSS Gradient Generator](#).

Hey! You found this booklet interesting? Support Converting Colors with the new Membership Option!

The pro membership hides all ads, plus gives you double the colors in the color bucket, and more awesome pro features!

[Learn more, Memberships starting at \\$2.50/m!](#)

**Follow me
on Twitter!**

@ConvertingColor