

Converting Colors

Decimal(14255544)

Have a look what the booklet for
Decimal(14255544) contains.

Decimal(14255544)	3
<i>Conversions</i>	4
<i>Details</i>	6
<i>Harmonies</i>	11
<i>Previews</i>	23
<i>Color Blindness Simulation</i>	26
<i>CSS Examples</i>	29

Color

Decimal(14255544)

Conversions

Conversions Part 1

Format	Color
Hex	D985B8
RGB	217, 133, 184
RGB Percent	85%, 52%, 72%
CMY	0.1490, 0.4784, 0.2784
CMYK	0.00, 0.39, 0.15, 0.15
HSL	324°, 52%, 69%
HSV	324°, 39%, 85%
XYZ	45.6545, 34.9875, 49.6944
YIQ	163.9300, 33.6930, 33.6690

Conversions

Conversions Part 2

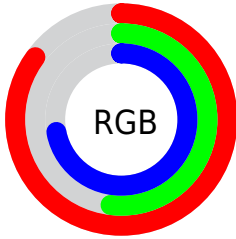
Format	Color
RYB	217, 133, 184
Decimal	14255544
CIELab	65.74, 39.26, -13.06
CIELCh	66, 41.370, 341.603
Yxy	34.9875, 0.3503, 0.2684
Android (android.graphics.Color)	4292445624 (0xFFD985B8)
YUV	163.9300, 9.8945, 46.5424
Hunter-Lab	59.1502, 34.2607, -8.4067

Details

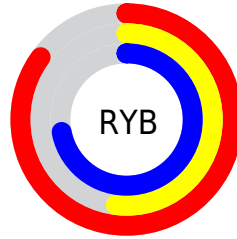
The Decimal color **14255544** is a light color, and the websafe version is hex **FF99CC**. A complement of this color would be **8772006**, and the grayscale version is **10790052**.

A 20% lighter version of the original color is **16759792**, and **10572163** is the 20% darker color. If you saturate the color by 10%, you get **14249903**, and if you desaturate by 10%, it is **14261185**.

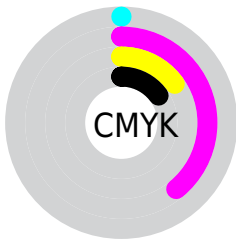
Distribution



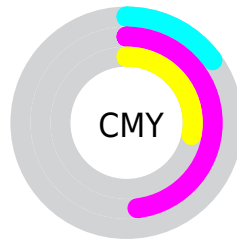
- Red (85%)
- Green (52%)
- Blue (72%)



- Red (85%)
- Yellow (52%)
- Blue (72%)



- Cyan (0%)
- Magenta (39%)
- Yellow (15%)
- Black (15%)



- Cyan (15%)
- Magenta (48%)
- Yellow (28%)

Brightness & Saturation Gradients

These gradients show how the Decimal color 14255544 changes by changing the brightness by 10 percent. The first figure shows a shift by +10% for each color and the second figure -10%.

Similar to the brightness gradients but the following saturation gradients show a change of the Decimal color 14255544 by changing the saturation by 10% instead.

 14255544

 14255544

16777215

 12348317

 16759792

 10572163

 16767231

 8730730

 16774655

 7020114

 5308474

 3670053

 2097166

 0

 14255544

 14255544

14249903

14261185

14244519

14266569

14238878

14272210

14233238

14277850

14227853

14283491

14222213

14286827

14221444

14286836

14286844

14286847

Harmonies

Analogous

The Analogous color harmony consists of three colors that are next to each other on the color wheel.



11964887



14255544



15172243

Triad

The Triadic color harmony groups three colors that are evenly spaced from another and form a triangle on the color wheel.



1425544



11117141



45520

Complementary

The Complementary color scheme is a pair of colors which are on the opposite of each other on the color wheel.



1425544



8772006

Split Complementary

Split-complementary colors differ from the complementary color scheme. The scheme consists of three colors, the original color and two neighbors of the complement color.



45997



1425544



8432743

Square

The Square scheme is like the rectangle color scheme, but the four colors are evenly spaced on the color wheel.



1425544



13276761



5157255



3058405

Rectangle

The Rectangle color scheme consists of four colors that form a rectangle on the color wheel.



14255544



15042171



5157255



45765

Sweetspot

The Sweet Spot groups the original color and five complimentary colors.



14255544



16769267



10847705



8416888



0



8421504

Same Dimension

The Same Dimension uses a secret algorithm to generate beautiful new colors.



14255544



16747217



14255503



7234409



11337833



3014684

Inverse Universe

The Inverse Universe completely reimagines the original color for something new.



14255544



16747217



8772047



7234409



11337833



3014684

Previews

White Background



This preview shows how the Decimal color 1425544 looks on a white background.

Color Contrast Check

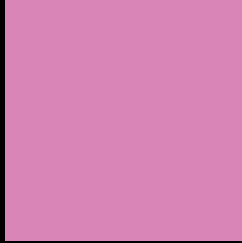
Large Text (above 18pt) WCAG AA × Fail

Any Text WCAG AA × Fail

Large Text (above 18pt) WCAG AAA × Fail

Any Text WCAG AAA × Fail

Black Background



This preview shows how the Decimal color 14255544 looks on a black background.

Color Contrast Check

Large Text (above 18pt) WCAG AA ✓ Pass

Any Text WCAG AA ✓ Pass

Large Text (above 18pt) WCAG AAA ✓ Pass

Any Text WCAG AAA ✓ Pass

If you want to check with other color combinations, try the [Color Contrast Checker](#).

Decimal 14255544 Background



This preview shows how black text looks on a background with the Decimal color 14255544.



This preview shows how white text looks on a background with the Decimal color 14255544.

Color Blindness Simulation

Color vision deficiency is a very complex topic, and I could not describe the different causes any better than Wikipedia does, so if you want to learn more, you should check out their [article about color blindness](#).

Dichromacy



Original Color
14255544

Protanopia
9871049

Deuteranopia
10919092



Tritanopia
13994902

Trichromacy



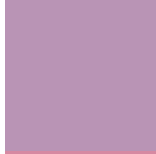
Original Color

14255544



Protanomaly

11441603



Deuteranomaly

12162229



Tritanomaly

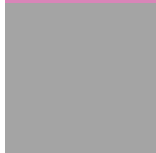
14059938

Monochromacy



Original Color

14255544



Achromatopsia

10790052



Achromatomaly

12032427

CSS Examples

Text

The CSS property to change the color of the text to Decimal 14255544 is called "color". The color property can be set on classes, ids or directly on the HTML element.

This example shows how text in the color #D985B8 looks like.

```
.text, #text, p{  
    color:#D985B8  
}
```

If you want to add a text shadow in that color use the text-shadow property, you can generate a text shadow directly with our [CSS Text Shadow Generator](#).

Here you see how black text with a 4 pixel #D985B8 colored shadow looks like.

```
.shadow{ text-shadow: 4px 4px 2px #D985B8
}
```

Border

The CSS property to change the border of an element to Decimal 14255544 is called "border". The border property can be set on classes, ids or directly on the HTML element.

This example shows the color as border, it can be applied via the CSS property "border" or "border-color".

```
.border, #border, table{ border:4px solid
#D985B8 }
```

If only the border color should be changed use the property `border-color`.

```
.border{ border-color:#D985B8 }
```

If you want to add a box shadow in that color use:

Here you see how a box with a 4 pixel #D985B8 colored shadow looks like.

```
.boxshadow{ -moz-box-shadow:4px 4px 4px  
4px #D985B8; -webkit-box-shadow:4px 4px  
4px 4px #D985B8; box-shadow:4px 4px 4px  
4px #D985B8 }
```

Background

The CSS property to change the background color of an element to Decimal 14255544 is called "background". The background property can be set on classes, ids or directly on the HTML element.

```
.background, #background, body{  
background:#D985B8 }
```

If only the background color should be changed can be used:

```
.background{ background-color:#D985B8 }
```

This example shows the color as background, it is applied via the CSS property "background".

To optimize and compress your CSS code, you can use our [online CSS compressor and optimizer](#) based on csstidy. If you want to create a linear or radial gradient as background or border, check our [CSS Gradient Generator](#).

Hey! You found this booklet interesting? Support Converting Colors with the new Membership Option!

The pro membership hides all ads, plus gives you double the colors in the color bucket, and more awesome pro features!

[Learn more, Memberships starting at \\$2.50/m!](#)

**Follow me
on Twitter!**

@ConvertingColor