

Converting Colors

Decimal(14259846)

Have a look what the booklet for
Decimal(14259846) contains.

Decimal(14259846)	3
<i>Conversions</i>	4
<i>Details</i>	6
<i>Harmonies</i>	11
<i>Previews</i>	23
<i>Color Blindness Simulation</i>	26
<i>CSS Examples</i>	29

Color

Decimal(14259846)

Conversions

Conversions Part 1

Format	Color
Hex	D99686
RGB	217, 150, 134
RGB Percent	85%, 59%, 53%
CMY	0.1490, 0.4118, 0.4745
CMYK	0.00, 0.31, 0.38, 0.15
HSL	12°, 52%, 69%
HSV	12°, 38%, 85%
XYZ	43.8247, 38.2856, 27.6343
YIQ	168.2090, 45.0680, 9.2280

Conversions

Conversions Part 2

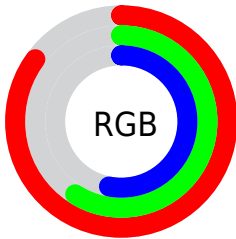
Format	Color
R _Y B	217, 154, 134
Decimal	14259846
CIE Lab	68.23, 23.21, 18.60
CIE LCh	68, 29.744, 38.703
Yxy	38.2856, 0.3993, 0.3489
Android (android.graphics.Color)	4292449926 (0xFFD99686)
YUV	168.2090, -16.8650, 42.7897
Hunter-Lab	61.8754, 18.1449, 16.8331

Details

The Decimal color **14259846** is a light color, and the websafe version is hex **CC9999**. A complement of this color would be **8833497**, and the grayscale version is **11053224**.

A 20% lighter version of the original color is **16764347**, and **10511188** is the 20% darker color. If you saturate the color by 10%, you get **14255216**, and if you desaturate by 10%, it is **14264476**.

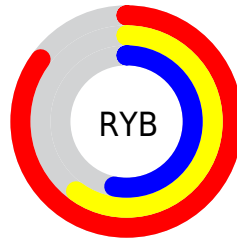
Distribution



Red (85%)

Green (59%)

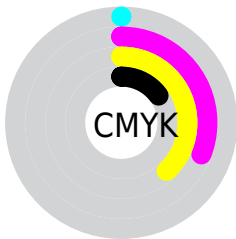
Blue (53%)



Red (85%)

Yellow (60%)

Blue (53%)

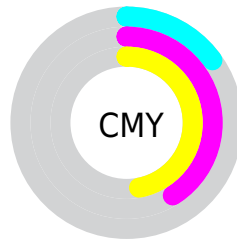


Cyan (0%)

Magenta (31%)

Yellow (38%)

Black (15%)



Cyan (15%)

Magenta (41%)

Yellow (47%)

Brightness & Saturation Gradients

These gradients show how the Decimal color 14259846 changes by changing the brightness by 10 percent. The first figure shows a shift by +10% for each color and the second figure -10%.

Similar to the brightness gradients but the following saturation gradients show a change of the Decimal color 14259846 by changing the saturation by 10% instead.

 14259846

 14259846

16777215

 12352621

 16764347

 10511188

 16771543

 8669757

 16777203

 6959911

 5184531

 3540480

 1900545

 0

 14259846

 14259846

 14255216

 14264476

 14250843

 14268849

 14246213

 14273479

 14241839

 14277853

 14237210

 14282483

 14232836

 14286847

 14232064

Harmonies

Analogous

The Analogous color harmony consists of three colors that are next to each other on the color wheel.



14389919



14259846



13278837

Triad

The Triadic color harmony groups three colors that are evenly spaced from another and form a triangle on the color wheel.



14259846



7648402



9414363

Complementary

The Complementary color scheme is a pair of colors which are on the opposite of each other on the color wheel.



14259846



8833497

Split Complementary

Split-complementary colors differ from the complementary color scheme. The scheme consists of three colors, the original color and two neighbors of the complement color.



6860504



14259846



5879213

Square

The Square scheme is like the rectangle color scheme, but the four colors are evenly spaced on the color wheel.



14259846



9744252



5289159



11836880

Rectangle

The Rectangle color scheme consists of four colors that form a rectangle on the color wheel.



14259846



12231793



5289159



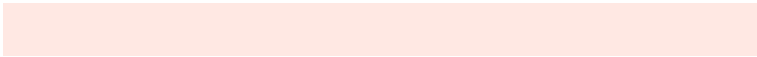
8497628

Sweetspot

The Sweet Spot groups the original color and five complimentary colors.



14259846



16771299



14255818



8417903



0



8421504

Same Dimension

The Same Dimension uses a secret algorithm to generate beautiful new colors.



14259846



16752778



14270342



7234915



11346176



3016960

Inverse Universe

The Inverse Universe completely reimagines the original color for something new.



8833497



9103615



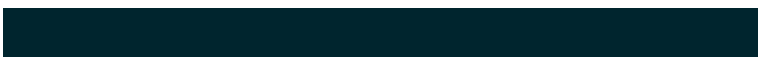
8823001



6515822



36013



9518

Previews

White Background



This preview shows how the Decimal color 14259846 looks on a white background.

Color Contrast Check

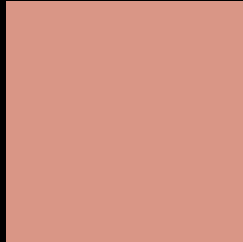
Large Text (above 18pt) WCAG AA × Fail

Any Text WCAG AA × Fail

Large Text (above 18pt) WCAG AAA × Fail

Any Text WCAG AAA × Fail

Black Background



This preview shows how the Decimal color 14259846 looks on a black background.

Color Contrast Check

Large Text (above 18pt) WCAG AA ✓ Pass

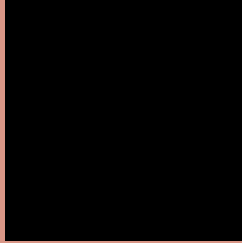
Any Text WCAG AA ✓ Pass

Large Text (above 18pt) WCAG AAA ✓ Pass

Any Text WCAG AAA ✓ Pass

If you want to check with other color combinations, try the [Color Contrast Checker](#).

Decimal 14259846 Background



This preview shows how black text looks on a background with the Decimal color 14259846.



This preview shows how white text looks on a background with the Decimal color 14259846.

Color Blindness Simulation

Color vision deficiency is a very complex topic, and I could not describe the different causes any better than Wikipedia does, so if you want to learn more, you should check out their [article about color blindness](#).

Dichromacy





Tritanopia
14390174

Trichromacy



Original Color
14259846

Protanomaly
12492939

Deuteranomaly
13343877

Tritanomaly
14324885

Monochromacy



Original Color
14259846

Achromatopsia
11053224

Achromatomaly
12231068

CSS Examples

Text

The CSS property to change the color of the text to Decimal 14259846 is called "color". The color property can be set on classes, ids or directly on the HTML element.

This example shows how text in the color #D99686 looks like.

```
.text, #text, p{  
    color:#D99686  
}
```

If you want to add a text shadow in that color use the text-shadow property, you can generate a text shadow directly with our [CSS Text Shadow Generator](#).

Here you see how black text with a 4 pixel #D99686 colored shadow looks like.

```
.shadow{ text-shadow: 4px 4px 2px #D99686
}
```

Border

The CSS property to change the border of an element to Decimal 14259846 is called "border". The border property can be set on classes, ids or directly on the HTML element.

This example shows the color as border, it can be applied via the CSS property "border" or "border-color".

```
.border, #border, table{ border:4px solid
#D99686 }
```

If only the border color should be changed use the property `border-color`.

```
.border{ border-color:#D99686 }
```

If you want to add a box shadow in that color use:

Here you see how a box with a 4 pixel #D99686 colored shadow looks like.

```
.boxshadow{ -moz-box-shadow:4px 4px 4px  
4px #D99686; -webkit-box-shadow:4px 4px  
4px 4px #D99686; box-shadow:4px 4px 4px  
4px #D99686 }
```

Background

The CSS property to change the background color of an element to Decimal 14259846 is called "background". The background property can be set on classes, ids or directly on the HTML element.

```
.background, #background, body{  
background:#D99686 }
```

If only the background color should be changed can be used:

```
.background{ background-color:#D99686 }
```

This example shows the color as background, it is applied via the CSS property "background".

To optimize and compress your CSS code, you can use our [online CSS compressor and optimizer](#) based on csstidy. If you want to create a linear or radial gradient as background or border, check our [CSS Gradient Generator](#).

Hey! You found this booklet interesting? Support Converting Colors with the new Membership Option!

The pro membership hides all ads, plus gives you double the colors in the color bucket, and more awesome pro features!

[Learn more, Memberships starting at \\$2.50/m!](#)

**Follow me
on Twitter!**

@ConvertingColor