

Converting Colors

Decimal(14260384)

Have a look what the booklet for
Decimal(14260384) contains.

Decimal(14260384)	3
<i>Conversions</i>	4
<i>Details</i>	6
<i>Harmonies</i>	11
<i>Previews</i>	23
<i>Color Blindness Simulation</i>	26
<i>CSS Examples</i>	29

Color

Decimal(14260384)

Conversions

Conversions Part 1

Format	Color
Hex	D998A0
RGB	217, 152, 160
RGB Percent	85%, 60%, 63%
CMY	0.1490, 0.4039, 0.3725
CMYK	0.00, 0.30, 0.26, 0.15
HSL	353°, 46%, 72%
HSV	353°, 30%, 85%
XYZ	46.1887, 39.7463, 38.4951
YIQ	172.3470, 36.1720, 16.2680

Conversions

Conversions Part 2

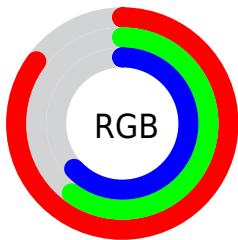
Format	Color
R _Y B	217, 152, 160
Decimal	14260384
CIE Lab	69.29, 25.48, 5.63
CIE LCh	69, 26.091, 12.458
Yxy	39.7463, 0.3712, 0.3194
Android (android.graphics.Color)	4292450464 (0xFFD998A0)
YUV	172.3470, -6.0871, 39.1607
Hunter-Lab	63.0446, 20.4472, 7.9287

Details

The Decimal color **14260384** is a light color, and the websafe version is hex **CC9999**, and the color name is **parrot pink**. A complement of this color would be **10017233**, and the grayscale version is **11316396**.

A 20% lighter version of the original color is **16764887**, and **10577005** is the 20% darker color. If you saturate the color by 10%, you get **14254733**, and if you desaturate by 10%, it is **14266035**.

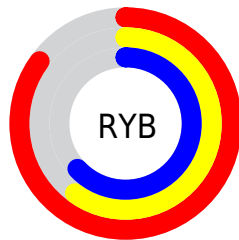
Distribution



Red (85%)

Green (60%)

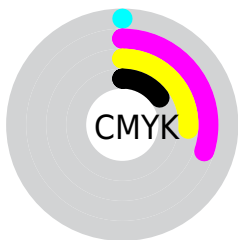
Blue (63%)



Red (85%)

Yellow (60%)

Blue (63%)

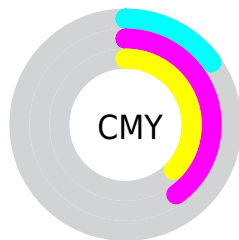


Cyan (0%)

Magenta (30%)

Yellow (26%)

Black (15%)



Cyan (15%)

Magenta (40%)

Yellow (37%)

Brightness & Saturation Gradients

These gradients show how the Decimal color 14260384 changes by changing the brightness by 10 percent. The first figure shows a shift by +10% for each color and the second figure -10%.

Similar to the brightness gradients but the following saturation gradients show a change of the Decimal color 14260384 by changing the saturation by 10% instead.

 14260384

 14260384


16777215

 12418694

 16764887

 10577005

 16772083

 8801364

 7025725

 5315880

 3737107

 2359297

 0

 14260384

 14260384

 14254733

 14266035

 14249338

 14271430

 14243687

 14277081

 14238036

 14282732

 14232385

 14286847

 14226990

 14221339

Harmonies

Analogous

The Analogous color harmony consists of three colors that are next to each other on the color wheel.



13605560



14260384



13999242

Triad

The Triadic color harmony groups three colors that are evenly spaced from another and form a triangle on the color wheel.



14260384



9875846



7974870

Complementary

The Complementary color scheme is a pair of colors which are on the opposite of each other on the color wheel.



14260384



10017233

Split Complementary

Split-complementary colors differ from the complementary color scheme. The scheme consists of three colors, the original color and two neighbors of the complement color.



6600136



14260384



8107418

Square

The Square scheme is like the rectangle color scheme, but the four colors are evenly spaced on the color wheel.



14260384



11578235



6796978



10135767

Rectangle

The Rectangle color scheme consists of four colors that form a rectangle on the color wheel.



14260384



13475968



6796978



7385554

Sweetspot

The Sweet Spot groups the original color and five complimentary colors.



14260384



16771307



13670617



8417651



0



8421504

Same Dimension

The Same Dimension uses a secret algorithm to generate beautiful new colors.



14260384



16753582



14266520



7234404



11337749



3014662

Inverse Universe

The Inverse Universe completely reimagines the original color for something new.



14260384



16753582



10011097



7234404



11337749



3014662

Previews

White Background



This preview shows how the Decimal color 14260384 looks on a white background.

Color Contrast Check

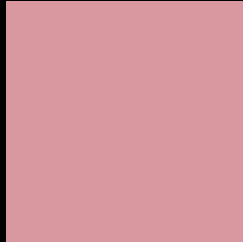
Large Text (above 18pt) WCAG AA × Fail

Any Text WCAG AA × Fail

Large Text (above 18pt) WCAG AAA × Fail

Any Text WCAG AAA × Fail

Black Background



This preview shows how the Decimal color 14260384 looks on a black background.

Color Contrast Check

Large Text (above 18pt) WCAG AA ✓ Pass

Any Text WCAG AA ✓ Pass

Large Text (above 18pt) WCAG AAA ✓ Pass

Any Text WCAG AAA ✓ Pass

If you want to check with other color combinations, try the [Color Contrast Checker](#).

Decimal 14260384 Background



This preview shows how black text looks on a background with the Decimal color 14260384.

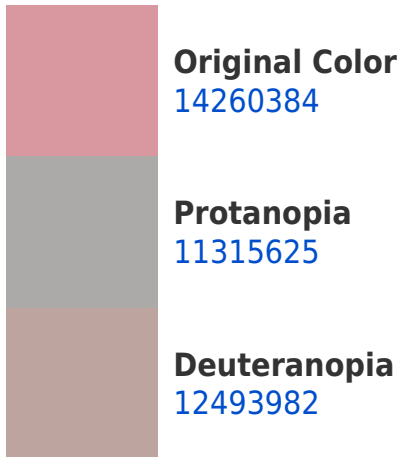



This preview shows how white text looks on a background with the Decimal color 14260384.

Color Blindness Simulation

Color vision deficiency is a very complex topic, and I could not describe the different causes any better than Wikipedia does, so if you want to learn more, you should check out their [article about color blindness](#).

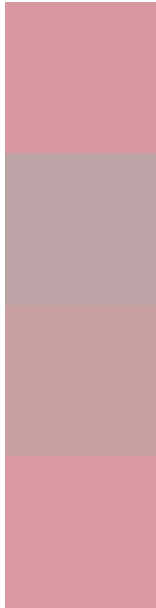
Dichromacy





Tritanopia
14260387

Trichromacy



Original Color
14260384

Protanomaly
12362662

Deuteranomaly
13148319

Tritanomaly
14260386

Monochromacy



Original Color
14260384

Achromatopsia
11316396

Achromatomaly
12363176

CSS Examples

Text

The CSS property to change the color of the text to Decimal 14260384 is called "color". The color property can be set on classes, ids or directly on the HTML element.

This example shows how text in the color #D998A0 looks like.

```
.text, #text, p{  
    color:#D998A0  
}
```

If you want to add a text shadow in that color use the text-shadow property, you can generate a text shadow directly with our [CSS Text Shadow Generator](#).

Here you see how black text with a 4 pixel #D998A0 colored shadow looks like.

```
.shadow{ text-shadow: 4px 4px 2px #D998A0
}
```

Border

The CSS property to change the border of an element to Decimal 14260384 is called "border". The border property can be set on classes, ids or directly on the HTML element.

This example shows the color as border, it can be applied via the CSS property "border" or "border-color".

```
.border, #border, table{ border:4px solid
#D998A0 }
```

If only the border color should be changed use the property `border-color`.

```
.border{ border-color:#D998A0 }
```

If you want to add a box shadow in that color use:

Here you see how a box with a 4 pixel #D998A0 colored shadow looks like.

```
.boxshadow{ -moz-box-shadow:4px 4px 4px  
4px #D998A0; -webkit-box-shadow:4px 4px  
4px 4px #D998A0; box-shadow:4px 4px 4px  
4px #D998A0 }
```

Background

The CSS property to change the background color of an element to Decimal 14260384 is called "background". The background property can be set on classes, ids or directly on the HTML element.

```
.background, #background, body{  
background:#D998A0 }
```

If only the background color should be changed can be used:

```
.background{ background-color:#D998A0 }
```

This example shows the color as background, it is applied via the CSS property "background".

To optimize and compress your CSS code, you can use our [online CSS compressor and optimizer](#) based on csstidy. If you want to create a linear or radial gradient as background or border, check our [CSS Gradient Generator](#).

Hey! You found this booklet interesting? Support Converting Colors with the new Membership Option!

The pro membership hides all ads, plus gives you double the colors in the color bucket, and more awesome pro features!

[Learn more, Memberships starting at \\$2.50/m!](#)

**Follow me
on Twitter!**

@ConvertingColor