

Converting Colors

Decimal(14261643)

Have a look what the booklet for
Decimal(14261643) contains.

Decimal(14261643)	3
<i>Conversions</i>	4
<i>Details</i>	6
<i>Harmonies</i>	11
<i>Previews</i>	23
<i>Color Blindness Simulation</i>	26
<i>CSS Examples</i>	29

Color

Decimal(14261643)

Conversions

Conversions Part 1

Format	Color
Hex	D99D8B
RGB	217, 157, 139
RGB Percent	85%, 62%, 55%
CMY	0.1490, 0.3843, 0.4549
CMYK	0.00, 0.28, 0.36, 0.15
HSL	14°, 51%, 70%
HSV	14°, 36%, 85%
XYZ	45.3324, 40.7297, 29.8984
YIQ	172.8880, 41.5380, 7.1220

Conversions

Conversions Part 2

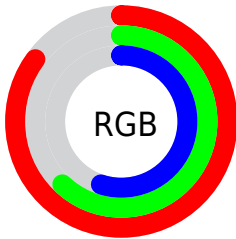
Format	Color
R _Y B	217, 162, 139
Decimal	14261643
CIE Lab	69.99, 20.03, 18.26
CIE LCh	70, 27.099, 42.356
Yxy	40.7297, 0.3909, 0.3512
Android (android.graphics.Color)	4292451723 (0xFFD99D8B)
YUV	172.8880, -16.7068, 38.6862
Hunter-Lab	63.8199, 15.1072, 16.8976

Details

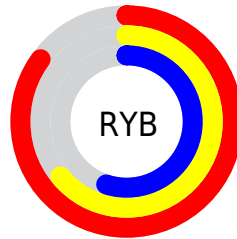
The Decimal color **14261643** is a light color, and the websafe version is hex **CC9999**. A complement of this color would be **9160665**, and the grayscale version is **11382189**.

A 20% lighter version of the original color is **16766145**, and **10512729** is the 20% darker color. If you saturate the color by 10%, you get **14257269**, and if you desaturate by 10%, it is **14266017**.

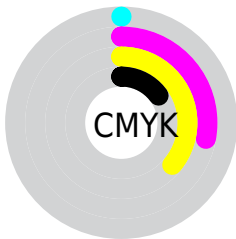
Distribution



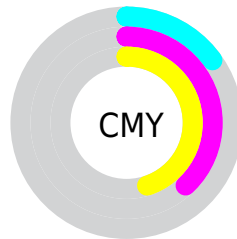
- Red (85%)
- Green (62%)
- Blue (55%)



- Red (85%)
- Yellow (64%)
- Blue (55%)



- Cyan (0%)
- Magenta (28%)
- Yellow (36%)
- Black (15%)



- Cyan (15%)
- Magenta (38%)
- Yellow (45%)

Brightness & Saturation Gradients

These gradients show how the Decimal color 14261643 changes by changing the brightness by 10 percent. The first figure shows a shift by +10% for each color and the second figure -10%.

Similar to the brightness gradients but the following saturation gradients show a change of the Decimal color 14261643 by changing the saturation by 10% instead.

 14261643

 14261643

16777215

 12354417

 16766145

 10512729

 16773340

 8737089

 16777209

 6961451

 5251862

 3673344

 2228225

 0

 14261643

 14261643

 14257269

 14266017

 14253152

 14270134

 14248778

 14274508

 14244404

 14278882

 14240286

 14283000

 14235913

 14286847

 14234112

Harmonies

Analogous

The Analogous color harmony consists of three colors that are next to each other on the color wheel.



14522786



14261643



13280637

Triad

The Triadic color harmony groups three colors that are evenly spaced from another and form a triangle on the color wheel.



14261643



8108187



10201819

Complementary

The Complementary color scheme is a pair of colors which are on the opposite of each other on the color wheel.



14261643



9160665

Split Complementary

Split-complementary colors differ from the complementary color scheme. The scheme consists of three colors, the original color and two neighbors of the complement color.



7910105



14261643



6666677

Square

The Square scheme is like the rectangle color scheme, but the four colors are evenly spaced on the color wheel.



14261643



9941894



6469579



12296655

Rectangle

The Rectangle color scheme consists of four colors that form a rectangle on the color wheel.



14261643



12298874



6469579



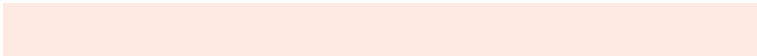
9416156

Sweetspot

The Sweet Spot groups the original color and five complimentary colors.



14261643



16771555



14257096



8418159



0



8421504

Same Dimension

The Same Dimension uses a secret algorithm to generate beautiful new colors.



14261643



16755601



14271371



7234915



11347968



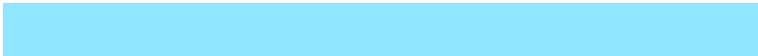
3017472

Inverse Universe

The Inverse Universe completely reimagines the original color for something new.



9160665



9561855



9150937



6515566



34221



9006

Previews

White Background



This preview shows how the Decimal color 14261643 looks on a white background.

Color Contrast Check

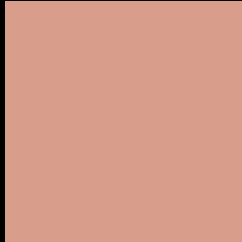
Large Text (above 18pt) WCAG AA × Fail

Any Text WCAG AA × Fail

Large Text (above 18pt) WCAG AAA × Fail

Any Text WCAG AAA × Fail

Black Background



This preview shows how the Decimal color 14261643 looks on a black background.

Color Contrast Check

Large Text (above 18pt) WCAG AA ✓ Pass

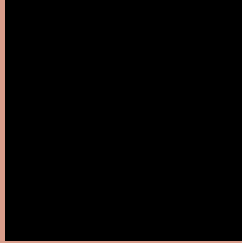
Any Text WCAG AA ✓ Pass

Large Text (above 18pt) WCAG AAA ✓ Pass

Any Text WCAG AAA ✓ Pass

If you want to check with other color combinations, try the [Color Contrast Checker](#).

Decimal 14261643 Background



This preview shows how black text looks on a background with the Decimal color 14261643.

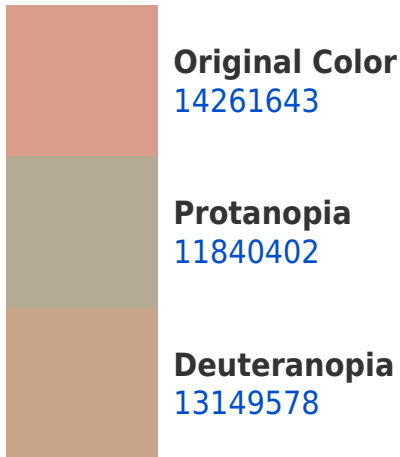



This preview shows how white text looks on a background with the Decimal color 14261643.

Color Blindness Simulation

Color vision deficiency is a very complex topic, and I could not describe the different causes any better than Wikipedia does, so if you want to learn more, you should check out their [article about color blindness](#).

Dichromacy





Tritanopia
14457253

Trichromacy



Original Color
14261643

Protanomaly
12691087

Deuteranomaly
13542026

Tritanomaly
14391964

Monochromacy



Original Color
14261643

Achromatopsia
11382189

Achromatomaly
12429217

CSS Examples

Text

The CSS property to change the color of the text to Decimal 14261643 is called "color". The color property can be set on classes, ids or directly on the HTML element.

This example shows how text in the color #D99D8B looks like.

```
.text, #text, p{  
    color:#D99D8B  
}
```

If you want to add a text shadow in that color use the text-shadow property, you can generate a text shadow directly with our [CSS Text Shadow Generator](#).

Here you see how black text with a 4 pixel #D99D8B colored shadow looks like.

```
.shadow{ text-shadow: 4px 4px 2px #D99D8B
}
```

Border

The CSS property to change the border of an element to Decimal 14261643 is called "border". The border property can be set on classes, ids or directly on the HTML element.

This example shows the color as border, it can be applied via the CSS property "border" or "border-color".

```
.border, #border, table{ border:4px solid
#D99D8B }
```

If only the border color should be changed use the property `border-color`.

```
.border{ border-color:#D99D8B }
```

If you want to add a box shadow in that color use:

Here you see how a box with a 4 pixel #D99D8B colored shadow looks like.

```
.boxshadow{ -moz-box-shadow:4px 4px 4px  
4px #D99D8B; -webkit-box-shadow:4px 4px  
4px 4px #D99D8B; box-shadow:4px 4px 4px  
4px #D99D8B }
```

Background

The CSS property to change the background color of an element to Decimal 14261643 is called "background". The background property can be set on classes, ids or directly on the HTML element.

```
.background, #background, body{  
background:#D99D8B }
```

If only the background color should be changed can be used:

```
.background{ background-color:#D99D8B }
```

This example shows the color as background, it is applied via the CSS property "background".

To optimize and compress your CSS code, you can use our [online CSS compressor and optimizer](#) based on csstidy. If you want to create a linear or radial gradient as background or border, check our [CSS Gradient Generator](#).

Hey! You found this booklet interesting? Support Converting Colors with the new Membership Option!

The pro membership hides all ads, plus gives you double the colors in the color bucket, and more awesome pro features!

[Learn more, Memberships starting at \\$2.50/m!](#)

**Follow me
on Twitter!**

@ConvertingColor