

Converting Colors

Decimal(14262192)

Have a look what the booklet for
Decimal(14262192) contains.

Decimal(14262192)	3
<i>Conversions</i>	4
<i>Details</i>	6
<i>Harmonies</i>	11
<i>Previews</i>	23
<i>Color Blindness Simulation</i>	26
<i>CSS Examples</i>	29

Color

Decimal(14262192)

Conversions

Conversions Part 1

Format	Color
Hex	D99FB0
RGB	217, 159, 176
RGB Percent	85%, 62%, 69%
CMY	0.1490, 0.3765, 0.3098
CMYK	0.00, 0.27, 0.19, 0.15
HSL	342°, 43%, 74%
HSV	342°, 27%, 85%
XYZ	48.8499, 42.6826, 46.7382
YIQ	178.2800, 29.1110, 17.5830

Conversions

Conversions Part 2

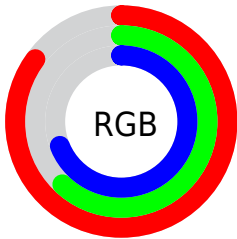
Format	Color
R _Y B	217, 159, 176
Decimal	14262192
CIE Lab	71.34, 24.05, -0.28
CIE LCh	71, 24.049, 359.322
Yxy	42.6826, 0.3533, 0.3087
Android (android.graphics.Color)	4292452272 (0xFFD99FB0)
YUV	178.2800, -1.1240, 33.9574
Hunter-Lab	65.3319, 19.1369, 3.3165

Details

The Decimal color **14262192** is a light color, and the websafe version is hex **CC9999**. A complement of this color would be **10475976**, and the grayscale version is **11711154**.

A 20% lighter version of the original color is **16766696**, and **10578812** is the 20% darker color. If you saturate the color by 10%, you get **14256545**, and if you desaturate by 10%, it is **14267839**.

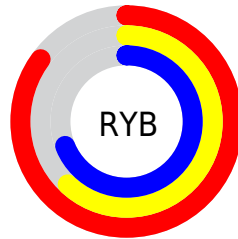
Distribution



Red (85%)

Green (62%)

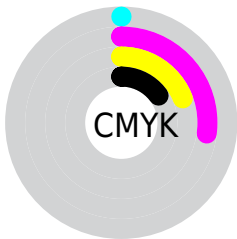
Blue (69%)



Red (85%)

Yellow (62%)

Blue (69%)

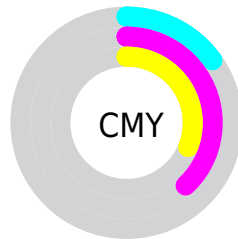


Cyan (0%)

Magenta (27%)

Yellow (19%)

Black (15%)



Cyan (15%)

Magenta (38%)

Yellow (31%)

Brightness & Saturation Gradients

These gradients show how the Decimal color 14262192 changes by changing the brightness by 10 percent. The first figure shows a shift by +10% for each color and the second figure -10%.

Similar to the brightness gradients but the following saturation gradients show a change of the Decimal color 14262192 by changing the saturation by 10% instead.

 14262192

 14262192

16777215

 12420501

 16766696

 10578812

 16774143

 8802915

 7093067

 5448756

 3869983

 2555911

 0

 14262192

 14262192

■ 14256545

■ 14267839

■ 14251153

■ 14273231

■ 14245506

■ 14278878

■ 14239859

■ 14284525

■ 14234467

■ 14286845

■ 14228820

■ 14286847

■ 14223173

■ 14221376

Harmonies

Analogous

The Analogous color harmony consists of three colors that are next to each other on the color wheel.



13345477



14262192



14393498

Triad

The Triadic color harmony groups three colors that are evenly spaced from another and form a triangle on the color wheel.



14262192



11056264



8042452

Complementary

The Complementary color scheme is a pair of colors which are on the opposite of each other on the color wheel.



14262192



10475976

Split Complementary

Split-complementary colors differ from the complementary color scheme. The scheme consists of three colors, the original color and two neighbors of the complement color.



7322307



14262192



9419160

Square

The Square scheme is like the rectangle color scheme, but the four colors are evenly spaced on the color wheel.



14262192



12561795



7977901



9744858

Rectangle

The Rectangle color scheme consists of four colors that form a rectangle on the color wheel.



14262192



14066830



7977901



7649487

Sweetspot

The Sweet Spot groups the original color and five complimentary colors.



14262192



16772081



13148121



8418166



0



8421504

Same Dimension

The Same Dimension uses a secret algorithm to generate beautiful new colors.



14262192



16756165



14265247



7234406



11337779



3014669

Inverse Universe

The Inverse Universe completely reimagines the original color for something new.



14262192



16756165



10472921



7234406



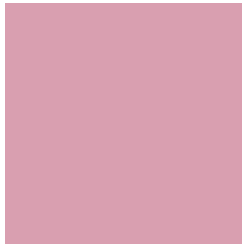
11337779



3014669

Previews

White Background



This preview shows how the Decimal color 14262192 looks on a white background.

Color Contrast Check

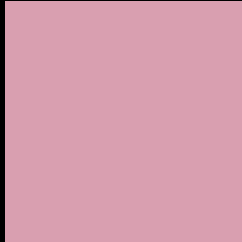
Large Text (above 18pt) WCAG AA × Fail

Any Text WCAG AA × Fail

Large Text (above 18pt) WCAG AAA × Fail

Any Text WCAG AAA × Fail

Black Background



This preview shows how the Decimal color 14262192 looks on a black background.

Color Contrast Check

Large Text (above 18pt) WCAG AA ✓ Pass

Any Text WCAG AA ✓ Pass

Large Text (above 18pt) WCAG AAA ✓ Pass

Any Text WCAG AAA ✓ Pass

If you want to check with other color combinations, try the [Color Contrast Checker](#).

Decimal 14262192 Background



This preview shows how black text looks on a background with the Decimal color 14262192.

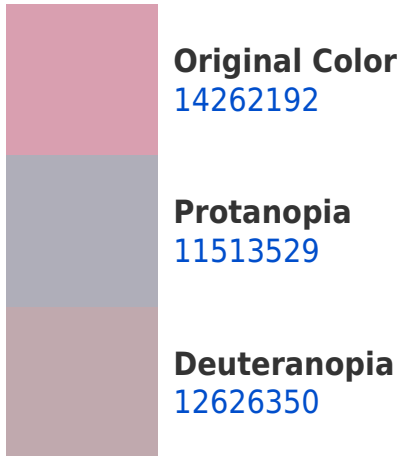



This preview shows how white text looks on a background with the Decimal color 14262192.

Color Blindness Simulation

Color vision deficiency is a very complex topic, and I could not describe the different causes any better than Wikipedia does, so if you want to learn more, you should check out their [article about color blindness](#).

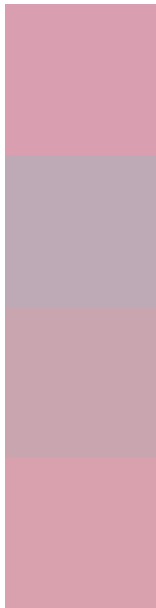
Dichromacy





Tritanopia
14262444

Trichromacy



Original Color
14262192

Protanomaly
12495286

Deuteranomaly
13215151

Tritanomaly
14262445

Monochromacy



Original Color
14262192

Achromatopsia
11711154

Achromatomaly
12626865

CSS Examples

Text

The CSS property to change the color of the text to Decimal 14262192 is called "color". The color property can be set on classes, ids or directly on the HTML element.

This example shows how text in the color #D99FB0 looks like.

```
.text, #text, p{  
    color:#D99FB0  
}
```

If you want to add a text shadow in that color use the text-shadow property, you can generate a text shadow directly with our [CSS Text Shadow Generator](#).

Here you see how black text with a 4 pixel #D99FB0 colored shadow looks like.

```
.shadow{ text-shadow: 4px 4px 2px #D99FB0
}
```

Border

The CSS property to change the border of an element to Decimal 14262192 is called "border". The border property can be set on classes, ids or directly on the HTML element.

This example shows the color as border, it can be applied via the CSS property "border" or "border-color".

```
.border, #border, table{ border:4px solid
#D99FB0 }
```

If only the border color should be changed use the property `border-color`.

```
.border{ border-color:#D99FB0 }
```

If you want to add a box shadow in that color use:

Here you see how a box with a 4 pixel #D99FB0 colored shadow looks like.

```
.boxshadow{ -moz-box-shadow:4px 4px 4px  
4px #D99FB0; -webkit-box-shadow:4px 4px  
4px 4px #D99FB0; box-shadow:4px 4px 4px  
4px #D99FB0 }
```

Background

The CSS property to change the background color of an element to Decimal 14262192 is called "background". The background property can be set on classes, ids or directly on the HTML element.

```
.background, #background, body{  
background:#D99FB0 }
```

If only the background color should be changed can be used:

```
.background{ background-color:#D99FB0 }
```

This example shows the color as background, it is applied via the CSS property "background".

To optimize and compress your CSS code, you can use our [online CSS compressor and optimizer](#) based on csstidy. If you want to create a linear or radial gradient as background or border, check our [CSS Gradient Generator](#).

Hey! You found this booklet interesting? Support Converting Colors with the new Membership Option!

The pro membership hides all ads, plus gives you double the colors in the color bucket, and more awesome pro features!

[Learn more, Memberships starting at \\$2.50/m!](#)

**Follow me
on Twitter!**

@ConvertingColor