

Converting Colors

Decimal(14262435)

Have a look what the booklet for
Decimal(14262435) contains.

Decimal(14262435)	3
<i>Conversions</i>	4
<i>Details</i>	6
<i>Harmonies</i>	11
<i>Previews</i>	23
<i>Color Blindness Simulation</i>	26
<i>CSS Examples</i>	29

Color

Decimal(14262435)

Conversions

Conversions Part 1

Format	Color
Hex	D9A0A3
RGB	217, 160, 163
RGB Percent	85%, 63%, 64%
CMY	0.1490, 0.3725, 0.3608
CMYK	0.00, 0.26, 0.25, 0.15
HSL	357°, 43%, 74%
HSV	357°, 26%, 85%
XYZ	47.7969, 42.5377, 40.3418
YIQ	177.3850, 33.0090, 13.0170

Conversions

Conversions Part 2

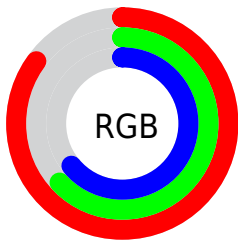
Format	Color
R _Y B	217, 160, 163
Decimal	14262435
CIE Lab	71.24, 21.58, 6.77
CIE LCh	71, 22.612, 17.415
Yxy	42.5377, 0.3658, 0.3255
Android (android.graphics.Color)	4292452515 (0xFFD9A0A3)
YUV	177.3850, -7.0918, 34.7424
Hunter-Lab	65.2209, 16.6766, 8.9814

Details

The Decimal color **14262435** is a light color, and the websafe version is hex **CC9999**. A complement of this color would be **10541526**, and the grayscale version is **11645361**.

A 20% lighter version of the original color is **16766938**, and **10579055** is the 20% darker color. If you saturate the color by 10%, you get **14256782**, and if you desaturate by 10%, it is **14268088**.

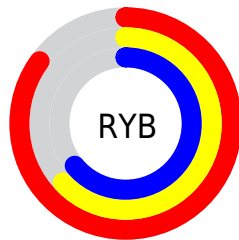
Distribution



Red (85%)

Green (63%)

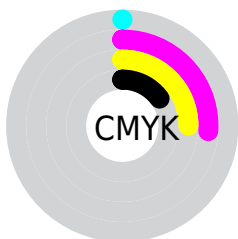
Blue (64%)



Red (85%)

Yellow (63%)

Blue (64%)

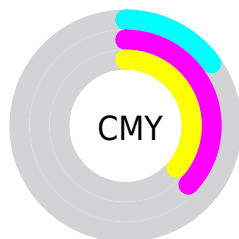


Cyan (0%)

Magenta (26%)

Yellow (25%)

Black (15%)



Cyan (15%)

Magenta (37%)

Yellow (36%)

Brightness & Saturation Gradients

These gradients show how the Decimal color 14262435 changes by changing the brightness by 10 percent. The first figure shows a shift by +10% for each color and the second figure -10%.

Similar to the brightness gradients but the following saturation gradients show a change of the Decimal color 14262435 by changing the saturation by 10% instead.

 14262435

 14262435


16777215

 12420745

 16766938


 10579055

 16774390

 8803159

 7093312

 5383466

 3804950

 2490368

 0

 14262435

 14262435

 14256782

 14268088

 14251386

 14273484

 14245733

 14279137

 14240081

 14284789

 14234684

 14286847

 14229032

 14223379

 14221323

Harmonies

Analogous

The Analogous color harmony consists of three colors that are next to each other on the color wheel.



13803960



14262435



13935761

Triad

The Triadic color harmony groups three colors that are evenly spaced from another and form a triangle on the color wheel.



14262435



10139282



9155542

Complementary

The Complementary color scheme is a pair of colors which are on the opposite of each other on the color wheel.



14262435



10541526

Split Complementary

Split-complementary colors differ from the complementary color scheme. The scheme consists of three colors, the original color and two neighbors of the complement color.



7911628



14262435



8698533

Square

The Square scheme is like the rectangle color scheme, but the four colors are evenly spaced on the color wheel.



14262435



11645319



7781050



10923221

Rectangle

The Rectangle color scheme consists of four colors that form a rectangle on the color wheel.



14262435



13412489



7781050



8631764

Sweetspot

The Sweet Spot groups the original color and five complimentary colors.



14262435



16772076



14000345



8418163



0



8421504

Same Dimension

The Same Dimension uses a secret algorithm to generate beautiful new colors.



14262435



16756146



14268832



7234403



11337737



3014658

Inverse Universe

The Inverse Universe completely reimagines the original color for something new.



14262435



16756146



10535129



7234403



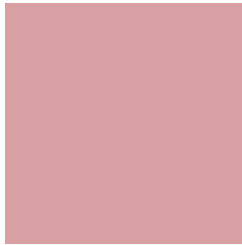
11337737



3014658

Previews

White Background



This preview shows how the Decimal color 14262435 looks on a white background.

Color Contrast Check

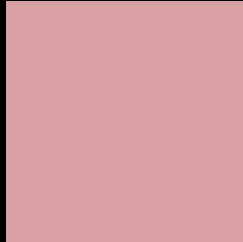
Large Text (above 18pt) WCAG AA × Fail

Any Text WCAG AA × Fail

Large Text (above 18pt) WCAG AAA × Fail

Any Text WCAG AAA × Fail

Black Background



This preview shows how the Decimal color 14262435 looks on a black background.

Color Contrast Check

Large Text (above 18pt) WCAG AA ✓ Pass

Any Text WCAG AA ✓ Pass

Large Text (above 18pt) WCAG AAA ✓ Pass

Any Text WCAG AAA ✓ Pass

If you want to check with other color combinations, try the [Color Contrast Checker](#).

Decimal 14262435 Background



This preview shows how black text looks on a background with the Decimal color 14262435.



This preview shows how white text looks on a background with the Decimal color 14262435.

Color Blindness Simulation

Color vision deficiency is a very complex topic, and I could not describe the different causes any better than Wikipedia does, so if you want to learn more, you should check out their [article about color blindness](#).


Dichromacy



Original Color
14262435

Protanopia
11775659

Deuteranopia
12954017



Tritanopia
14327723

Trichromacy



Original Color
14262435

Protanomaly
12691880

Deuteranomaly
13412002

Tritanomaly
14327720

Monochromacy



Original Color
14262435

Achromatopsia
11645361

Achromatomaly
12626860

CSS Examples

Text

The CSS property to change the color of the text to Decimal 14262435 is called "color". The color property can be set on classes, ids or directly on the HTML element.

This example shows how text in the color #D9A0A3 looks like.

```
.text, #text, p{  
    color:#D9A0A3  
}
```

If you want to add a text shadow in that color use the text-shadow property, you can generate a text shadow directly with our [CSS Text Shadow Generator](#).

Here you see how black text with a 4 pixel #D9A0A3 colored shadow looks like.

```
.shadow{ text-shadow: 4px 4px 2px #D9A0A3
}
```

Border

The CSS property to change the border of an element to Decimal 14262435 is called "border". The border property can be set on classes, ids or directly on the HTML element.

This example shows the color as border, it can be applied via the CSS property "border" or "border-color".

```
.border, #border, table{ border:4px solid
#D9A0A3 }
```

If only the border color should be changed use the property `border-color`.

```
.border{ border-color:#D9A0A3 }
```

If you want to add a box shadow in that color use:

Here you see how a box with a 4 pixel #D9A0A3 colored shadow looks like.

```
.boxshadow{ -moz-box-shadow:4px 4px 4px  
4px #D9A0A3; -webkit-box-shadow:4px 4px  
4px 4px #D9A0A3; box-shadow:4px 4px 4px  
4px #D9A0A3 }
```

Background

The CSS property to change the background color of an element to Decimal 14262435 is called "background". The background property can be set on classes, ids or directly on the HTML element.

```
.background, #background, body{  
background:#D9A0A3 }
```

If only the background color should be changed can be used:

```
.background{ background-color:#D9A0A3 }
```

This example shows the color as background, it is applied via the CSS property "background".

To optimize and compress your CSS code, you can use our [online CSS compressor and optimizer](#) based on csstidy. If you want to create a linear or radial gradient as background or border, check our [CSS Gradient Generator](#).

Hey! You found this booklet interesting? Support Converting Colors with the new Membership Option!

The pro membership hides all ads, plus gives you double the colors in the color bucket, and more awesome pro features!

[Learn more, Memberships starting at \\$2.50/m!](#)

**Follow me
on Twitter!**

@ConvertingColor