

# Converting Colors

Decimal(14262657)

Have a look what the booklet for  
Decimal(14262657) contains.

<b>Decimal(14262657)</b> .....	3
<i><b>Conversions</b></i> .....	4
<i><b>Details</b></i> .....	6
<i><b>Harmonies</b></i> .....	11
<i><b>Previews</b></i> .....	23
<i><b>Color Blindness Simulation</b></i> .....	26
<i><b>CSS Examples</b></i> .....	29

# **Color**

**Decimal(14262657)**

# Conversions

## Conversions Part 1

Format	Color
Hex	D9A181
RGB	217, 161, 129
RGB Percent	85%, 63%, 51%
CMY	0.1490, 0.3686, 0.4941
CMYK	0.00, 0.26, 0.41, 0.15
HSL	22°, 54%, 68%
HSV	22°, 41%, 85%
XYZ	45.3226, 41.8264, 26.4534
YIQ	174.0960, 43.6480, 1.9200

# Conversions

## Conversions Part 2

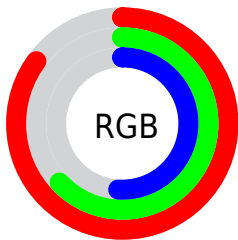
Format	Color
<a href="#">RYB</a>	<a href="#">217, 179, 129</a>
Decimal	<a href="#">14262657</a>
CIELab	<a href="#">70.75, 16.70, 24.77</a>
CIELCh	<a href="#">71, 29.877, 56.017</a>
Yxy	<a href="#">41.8264, 0.3990, 0.3682</a>
Android (android.graphics.Color)	<a href="#">4292452737 (0xFFD9A181)</a>
YUV	<a href="#">174.0960, -22.2323, 37.6268</a>
Hunter-Lab	<a href="#">64.6734, 11.9130, 21.0199</a>

# Details

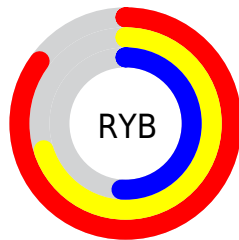
The Decimal color **14262657** is a light color, and the websafe version is hex **CC9966**. A complement of this color would be **8501721**, and the grayscale version is **11447982**.

A 20% lighter version of the original color is **16767158**, and **10513743** is the 20% darker color. If you saturate the color by 10%, you get **14259051**, and if you desaturate by 10%, it is **14266263**.

# Distribution



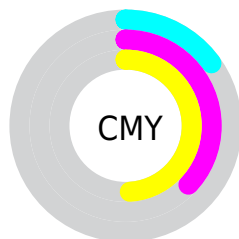
- Red (85%)
- Green (63%)
- Blue (51%)



- Red (85%)
- Yellow (70%)
- Blue (51%)



- Cyan (0%)
- Magenta (26%)
- Yellow (41%)
- Black (15%)



- Cyan (15%)
- Magenta (37%)
- Yellow (49%)

# Brightness & Saturation Gradients

These gradients show how the Decimal color 14262657 changes by changing the brightness by 10 percent. The first figure shows a shift by +10% for each color and the second figure -10%.

Similar to the brightness gradients but the following saturation gradients show a change of the Decimal color 14262657 by changing the saturation by 10% instead.



 14262657

 14262657

16777215

 12355432

 16767158

 10513743

 16774354

 8738104

 16777198

 6962466

 5252877

 3609088

 2097152

 0

 14262657

 14262657

 14259051

 14266263

 14255446

 14269868

 14252096

 14273218

 14248490

 14276824

 14244884

 14280429

 14241536

 14284031

 14286847

# Harmonies

## Analogous

The Analogous color harmony consists of three colors that are next to each other on the color wheel.



14916247



14262657



12888695

# Triad

The Triadic color harmony groups three colors that are evenly spaced from another and form a triangle on the color wheel.



14262657



6995112



11315166

# Complementary

The Complementary color scheme is a pair of colors which are on the opposite of each other on the color wheel.



14262657



8501721

# Split Complementary

Split-complementary colors differ from the complementary color scheme. The scheme consists of three colors, the original color and two neighbors of the complement color.



8696291



14262657



5749956

# Square

The Square scheme is like the rectangle color scheme, but the four colors are evenly spaced on the color wheel.



14262657



8960398



6404313



13409996

# Rectangle

The Rectangle color scheme consists of four colors that form a rectangle on the color wheel.



14262657



11645048



6404313



10464225

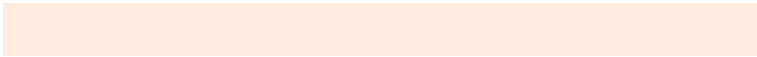


# Sweetspot

The Sweet Spot groups the original color and five complimentary colors.



14262657



16772320



14254522



8418414



0



8421504



# Same Dimension

The Same Dimension uses a secret algorithm to generate beautiful new colors.



14262657



16756610



14273665



7235427



11353856



3019008

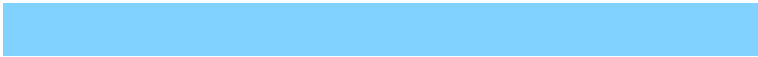


# Inverse Universe

The Inverse Universe completely reimagines the original color for something new.



8501721



8573695



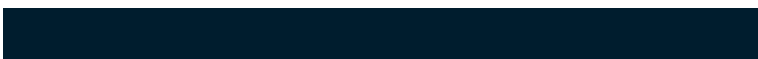
8490713



6515310



28333



7470



# Previews

## White Background



This preview shows how the Decimal color 14262657 looks on a white background.

## Color Contrast Check

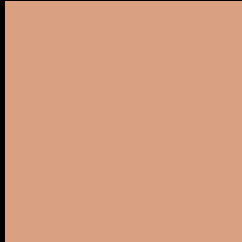
Large Text (above 18pt) WCAG AA × Fail

Any Text WCAG AA × Fail

Large Text (above 18pt) WCAG AAA × Fail

Any Text WCAG AAA × Fail

# Black Background



This preview shows how the Decimal color 14262657 looks on a black background.

## Color Contrast Check

Large Text (above 18pt) WCAG AA ✓ Pass

Any Text WCAG AA ✓ Pass

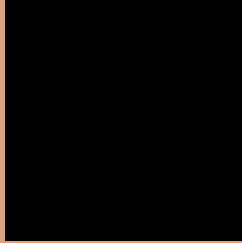
Large Text (above 18pt) WCAG AAA ✓ Pass

Any Text WCAG AAA ✓ Pass

If you want to check with other color combinations, try the [Color Contrast Checker](#).



## Decimal 14262657 Background



This preview shows how black text looks on a background with the Decimal color 14262657.




This preview shows how white text looks on a background with the Decimal color 14262657.

# Color Blindness Simulation

Color vision deficiency is a very complex topic, and I could not describe the different causes any better than Wikipedia does, so if you want to learn more, you should check out their [article about color blindness](#).

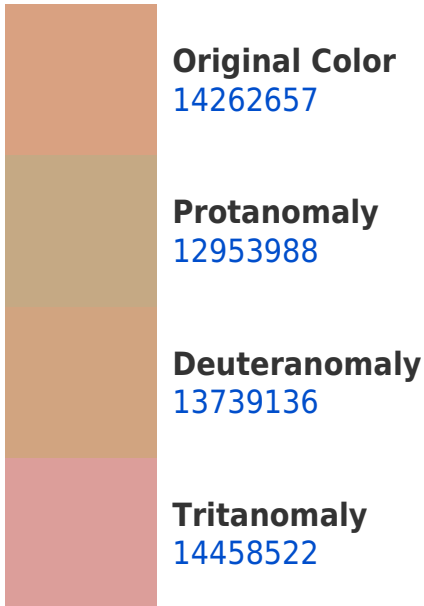
## Dichromacy





**Tritanopia**  
14523560

# Trichromacy



# Monochromacy



# CSS Examples

## Text

The CSS property to change the color of the text to Decimal 14262657 is called "color". The color property can be set on classes, ids or directly on the HTML element.

This example shows how text in the color #D9A181 looks like.

```
.text, #text, p{  
    color:#D9A181  
}
```

If you want to add a text shadow in that color use the text-shadow property, you can generate a text shadow directly with our [CSS Text Shadow Generator](#).

Here you see how black text with a 4 pixel #D9A181 colored shadow looks like.

```
.shadow{ text-shadow: 4px 4px 2px #D9A181
}
```

## Border

The CSS property to change the border of an element to Decimal 14262657 is called "border". The border property can be set on classes, ids or directly on the HTML element.

This example shows the color as border, it can be applied via the CSS property "border" or "border-color".

```
.border, #border, table{ border:4px solid
#D9A181 }
```

If only the border color should be changed use the property `border-color`.

```
.border{ border-color:#D9A181 }
```

If you want to add a box shadow in that color use:

Here you see how a box with a 4 pixel #D9A181 colored shadow looks like.

```
.boxshadow{ -moz-box-shadow:4px 4px 4px  
4px #D9A181; -webkit-box-shadow:4px 4px  
4px 4px #D9A181; box-shadow:4px 4px 4px  
4px #D9A181 }
```

# Background

The CSS property to change the background color of an element to Decimal 14262657 is called "background". The background property can be set on classes, ids or directly on the HTML element.

```
.background, #background, body{  
background:#D9A181 }
```

If only the background color should be changed can be used:

```
.background{ background-color:#D9A181 }
```

This example shows the color as background, it is applied via the CSS property "background".

To optimize and compress your CSS code, you can use our [online CSS compressor and optimizer](#) based on csstidy. If you want to create a linear or radial gradient as background or border, check our [CSS Gradient Generator](#).



Hey! You found this booklet interesting? Support Converting Colors with the new Membership Option!

The pro membership hides all ads, plus gives you double the colors in the color bucket, and more awesome pro features!

**[Learn more, Memberships starting at \\$2.50/m!](#)**

**Follow me  
on Twitter!**

@ConvertingColor