

# Converting Colors

Decimal(14263956)

Have a look what the booklet for  
Decimal(14263956) contains.

<b>Decimal(14263956)</b> .....	3
<i><b>Conversions</b></i> .....	4
<i><b>Details</b></i> .....	6
<i><b>Harmonies</b></i> .....	11
<i><b>Previews</b></i> .....	23
<i><b>Color Blindness Simulation</b></i> .....	26
<i><b>CSS Examples</b></i> .....	29

# **Color**

**Decimal(14263956)**

# Conversions

## Conversions Part 1

<b>Format</b>	<b>Color</b>
Hex	D9A694
RGB	217, 166, 148
RGB Percent	85%, 65%, 58%
CMY	0.1490, 0.3490, 0.4196
CMYK	0.00, 0.24, 0.32, 0.15
HSL	16°, 48%, 72%
HSV	16°, 32%, 85%
XYZ	47.5968, 44.1623, 34.0325
YIQ	179.1970, 36.1740, 5.2140

# Conversions

## Conversions Part 2

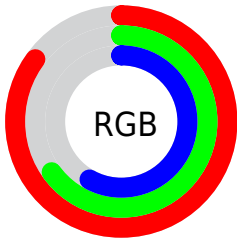
Format	Color
R <sub>Y</sub> B	217, 172, 148
Decimal	14263956
CIE Lab	72.34, 16.29, 16.58
CIE LCh	72, 23.241, 45.494
Yxy	44.1623, 0.3784, 0.3511
Android (android.graphics.Color)	4292454036 (0xFFD9A694)
YUV	179.1970, -15.3801, 33.1532
Hunter-Lab	66.4547, 11.5512, 16.1549

# Details

The Decimal color **14263956** is a light color, and the websafe version is hex **CC9999**. A complement of this color would be **9750489**, and the grayscale version is **11776947**.

A 20% lighter version of the original color is **16768458**, and **10580577** is the 20% darker color. If you saturate the color by 10%, you get **14259838**, and if you desaturate by 10%, it is **14268074**.

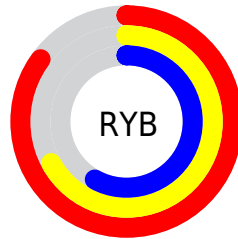
# Distribution



Red (85%)

Green (65%)

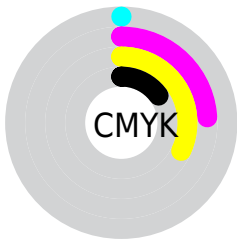
Blue (58%)



Red (85%)

Yellow (67%)

Blue (58%)

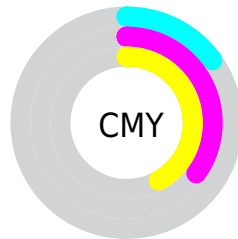


Cyan (0%)

Magenta (24%)

Yellow (32%)

Black (15%)



Cyan (15%)

Magenta (35%)

Yellow (42%)

# Brightness & Saturation Gradients

These gradients show how the Decimal color 14263956 changes by changing the brightness by 10 percent. The first figure shows a shift by +10% for each color and the second figure -10%.

Similar to the brightness gradients but the following saturation gradients show a change of the Decimal color 14263956 by changing the saturation by 10% instead.



 14263956

 14263956

16777215

 12422266

 16768458

 10580577

 16775910

 8804681

 7029299

 5384990

 3741189

 2293760

 0

 14263956

 14263956

 14259838

 14268074

 14255721

 14272191

 14251603

 14276309

 14247485

 14280427

 14243368

 14284543

 14239250

 14286847

 14235904

# Harmonies

## Analogous

The Analogous color harmony consists of three colors that are next to each other on the color wheel.



14525095



14263956



13347977

# Triad

The Triadic color harmony groups three colors that are evenly spaced from another and form a triangle on the color wheel.



14263956



8895910



10989786

# Complementary

The Complementary color scheme is a pair of colors which are on the opposite of each other on the color wheel.



14263956



9750489

# Split Complementary

Split-complementary colors differ from the complementary color scheme. The scheme consists of three colors, the original color and two neighbors of the complement color.



9156314



14263956



7847356

# Square

The Square scheme is like the rectangle color scheme, but the four colors are evenly spaced on the color wheel.



14263956



10402195



7912399



12757199

# Rectangle

The Rectangle color scheme consists of four colors that form a rectangle on the color wheel.



14263956



12431751



7912399



10334939

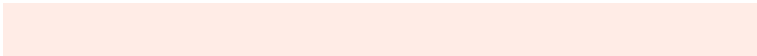


# Sweetspot

The Sweet Spot groups the original color and five complimentary colors.



14263956



16772326



14259400



8418416



0



8421504



# Same Dimension

The Same Dimension uses a secret algorithm to generate beautiful new colors.



14263956



16758686



14272660



7235171



11349248



3017728

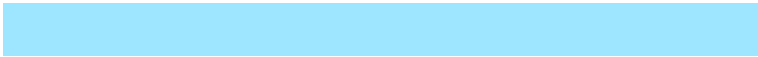


# Inverse Universe

The Inverse Universe completely reimagines the original color for something new.



9750489



10413823



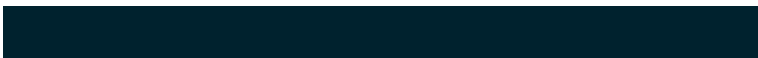
9741785



6515566



32941



8750



# Previews

## White Background



This preview shows how the Decimal color 14263956 looks on a white background.

## Color Contrast Check

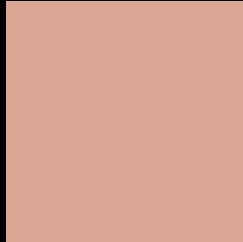
Large Text (above 18pt) WCAG AA × Fail

Any Text WCAG AA × Fail

Large Text (above 18pt) WCAG AAA × Fail

Any Text WCAG AAA × Fail

# Black Background



This preview shows how the Decimal color 14263956 looks on a black background.

## Color Contrast Check

Large Text (above 18pt) WCAG AA ✓ Pass

Any Text WCAG AA ✓ Pass

Large Text (above 18pt) WCAG AAA ✓ Pass

Any Text WCAG AAA ✓ Pass

If you want to check with other color combinations, try the [Color Contrast Checker](#).



## Decimal 14263956 Background



This preview shows how black text looks on a background with the Decimal color 14263956.




This preview shows how white text looks on a background with the Decimal color 14263956.

# Color Blindness Simulation

Color vision deficiency is a very complex topic, and I could not describe the different causes any better than Wikipedia does, so if you want to learn more, you should check out their [article about color blindness](#).

## Dichromacy





**Tritanopia**  
14459567

# Trichromacy



**Original Color**  
14263956

**Protanomaly**  
12955032

**Deuteranomaly**  
13805971

**Tritanomaly**  
14394277

# Monochromacy



**Original Color**  
14263956

**Achromatopsia**  
11776947

**Achromatomaly**  
12693160

# CSS Examples

## Text

The CSS property to change the color of the text to Decimal 14263956 is called "color". The color property can be set on classes, ids or directly on the HTML element.

This example shows how text in the color #D9A694 looks like.

```
.text, #text, p{  
    color:#D9A694  
}
```

If you want to add a text shadow in that color use the text-shadow property, you can generate a text shadow directly with our [CSS Text Shadow Generator](#).

Here you see how black text with a 4 pixel #D9A694 colored shadow looks like.

```
.shadow{ text-shadow: 4px 4px 2px #D9A694
}
```

## Border

The CSS property to change the border of an element to Decimal 14263956 is called "border". The border property can be set on classes, ids or directly on the HTML element.

This example shows the color as border, it can be applied via the CSS property "border" or "border-color".

```
.border, #border, table{ border:4px solid
#D9A694 }
```

If only the border color should be changed use the property `border-color`.

```
.border{ border-color:#D9A694 }
```

If you want to add a box shadow in that color use:

Here you see how a box with a 4 pixel #D9A694 colored shadow looks like.

```
.boxshadow{ -moz-box-shadow:4px 4px 4px  
4px #D9A694; -webkit-box-shadow:4px 4px  
4px 4px #D9A694; box-shadow:4px 4px 4px  
4px #D9A694 }
```

# Background

The CSS property to change the background color of an element to Decimal 14263956 is called "background". The background property can be set on classes, ids or directly on the HTML element.

```
.background, #background, body{  
background:#D9A694 }
```

If only the background color should be changed can be used:

```
.background{ background-color:#D9A694 }
```

This example shows the color as background, it is applied via the CSS property "background".

To optimize and compress your CSS code, you can use our [online CSS compressor and optimizer](#) based on csstidy. If you want to create a linear or radial gradient as background or border, check our [CSS Gradient Generator](#).



Hey! You found this booklet interesting? Support Converting Colors with the new Membership Option!

The pro membership hides all ads, plus gives you double the colors in the color bucket, and more awesome pro features!

**[Learn more, Memberships starting at \\$2.50/m!](#)**

**Follow me  
on Twitter!**

@ConvertingColor