

# Converting Colors

Decimal(14264993)

Have a look what the booklet for  
Decimal(14264993) contains.

<b>Decimal(14264993)</b> .....	3
<i><b>Conversions</b></i> .....	4
<i><b>Details</b></i> .....	6
<i><b>Harmonies</b></i> .....	11
<i><b>Previews</b></i> .....	23
<i><b>Color Blindness Simulation</b></i> .....	26
<i><b>CSS Examples</b></i> .....	29

# **Color**

**Decimal(14264993)**

# Conversions

## Conversions Part 1

Format	Color
Hex	D9AAA1
RGB	217, 170, 161
RGB Percent	85%, 67%, 63%
CMY	0.1490, 0.3333, 0.3686
CMYK	0.00, 0.22, 0.26, 0.15
HSL	10°, 42%, 74%
HSV	10°, 26%, 85%
XYZ	49.4230, 46.0744, 40.0066
YIQ	183.0270, 30.9010, 7.1650

# Conversions

## Conversions Part 2

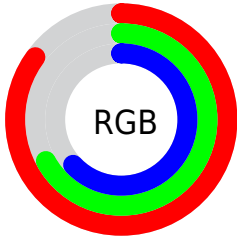
<b>Format</b>	<b>Color</b>
<b>R<sub>YB</sub></b>	217, 172, 161
Decimal	14264993
CIE Lab	73.59, 15.89, 11.22
CIE LCh	74, 19.454, 35.239
Yxy	46.0744, 0.3647, 0.3400
Android (android.graphics.Color)	4292455073 (0xFFD9AAA1)
YUV	183.0270, -10.8593, 29.7943
Hunter-Lab	67.8781, 11.1817, 12.5698

# Details

The Decimal color **14264993** is a light color, and the websafe version is hex **CC9999**. A complement of this color would be **10604761**, and the grayscale version is **12040119**.

A 20% lighter version of the original color is **16769496**, and **10581613** is the 20% darker color. If you saturate the color by 10%, you get **14260363**, and if you desaturate by 10%, it is **14269623**.

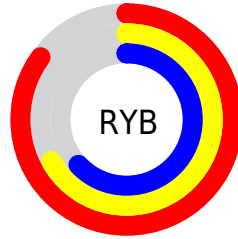
# Distribution



Red (85%)

Green (67%)

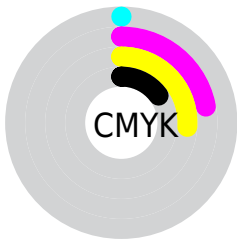
Blue (63%)



Red (85%)

Yellow (67%)

Blue (63%)

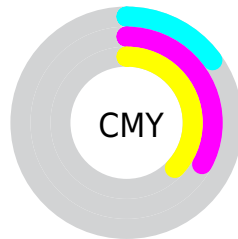


Cyan (0%)

Magenta (22%)

Yellow (26%)

Black (15%)



Cyan (15%)

Magenta (33%)

Yellow (37%)

# Brightness & Saturation Gradients

These gradients show how the Decimal color 14264993 changes by changing the brightness by 10 percent. The first figure shows a shift by +10% for each color and the second figure -10%.

Similar to the brightness gradients but the following saturation gradients show a change of the Decimal color 14264993 by changing the saturation by 10% instead.



 14264993

 14264993


16777215

 12423047

 16769496


 10581613

 16776948

 8805717

 7095614

 5451304

 3807508

 2424832

 0

 14264993

 14264993

 14260363

 14269623

 14255734

 14274252

 14250848

 14279138

 14246218

 14283768

 14241588

 14286847

 14236959

 14232329

 14230272

# Harmonies

## Analogous

The Analogous color harmony consists of three colors that are next to each other on the color wheel.



14264498



14264993



13676437

# Triad

The Triadic color harmony groups three colors that are evenly spaced from another and form a triangle on the color wheel.



14264993



10010277



10859992

# Complementary

The Complementary color scheme is a pair of colors which are on the opposite of each other on the color wheel.



14264993



10604761

# Split Complementary

Split-complementary colors differ from the complementary color scheme. The scheme consists of three colors, the original color and two neighbors of the complement color.



9485269



14264993



9027511

# Square

The Square scheme is like the rectangle color scheme, but the four colors are evenly spaced on the color wheel.



14264993



11319959



8765129



12365778

# Rectangle

The Rectangle color scheme consists of four colors that form a rectangle on the color wheel.



14264993



12956562



8765129



10336216



# Sweetspot

The Sweet Spot groups the original color and five complimentary colors.



14264993



16772843



14262737



8418675



0



8421504



# Same Dimension

The Same Dimension uses a secret algorithm to generate beautiful new colors.



14264993



16760240



14271905



7234659



11344896



3016448

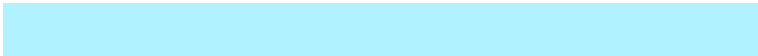


# Inverse Universe

The Inverse Universe completely reimagines the original color for something new.



10604761



11596543



10597849



6515822



37549

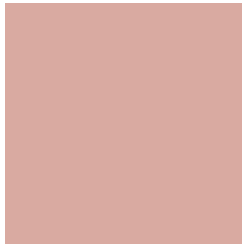


10030



# Previews

## White Background



This preview shows how the Decimal color 14264993 looks on a white background.

## Color Contrast Check

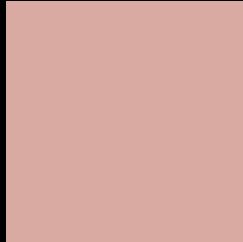
Large Text (above 18pt) WCAG AA × Fail

Any Text WCAG AA × Fail

Large Text (above 18pt) WCAG AAA × Fail

Any Text WCAG AAA × Fail

# Black Background



This preview shows how the Decimal color 14264993 looks on a black background.

## Color Contrast Check

Large Text (above 18pt) WCAG AA ✓ Pass

Any Text WCAG AA ✓ Pass

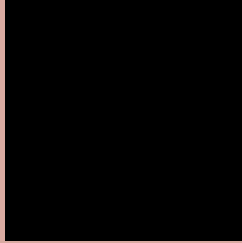
Large Text (above 18pt) WCAG AAA ✓ Pass

Any Text WCAG AAA ✓ Pass

If you want to check with other color combinations, try the [Color Contrast Checker](#).



## Decimal 14264993 Background



This preview shows how black text looks on a background with the Decimal color 14264993.



This preview shows how white text looks on a background with the Decimal color 14264993.

# Color Blindness Simulation

Color vision deficiency is a very complex topic, and I could not describe the different causes any better than Wikipedia does, so if you want to learn more, you should check out their [article about color blindness](#).


## Dichromacy



**Original Color**  
14264993

**Protanopia**  
12367014

**Deuteranopia**  
13545120



**Tritanopia**  
14395316

# Trichromacy



**Original Color**  
14264993

**Protanomaly**  
13086884

**Deuteranomaly**  
13807008

**Tritanomaly**  
14330029

# Monochromacy



**Original Color**  
14264993

**Achromatopsia**  
12040119

**Achromatomaly**  
12825263

# CSS Examples

## Text

The CSS property to change the color of the text to Decimal 14264993 is called "color". The color property can be set on classes, ids or directly on the HTML element.

This example shows how text in the color #D9AAA1 looks like.

```
.text, #text, p{  
  color:#D9AAA1  
}
```

If you want to add a text shadow in that color use the text-shadow property, you can generate a text shadow directly with our [CSS Text Shadow Generator](#).

Here you see how black text with a 4 pixel #D9AAA1 colored shadow looks like.

```
.shadow{ text-shadow: 4px 4px 2px #D9AAA1
}
```

## Border

The CSS property to change the border of an element to Decimal 14264993 is called "border". The border property can be set on classes, ids or directly on the HTML element.

This example shows the color as border, it can be applied via the CSS property "border" or "border-color".

```
.border, #border, table{ border:4px solid
#D9AAA1 }
```

If only the border color should be changed use the property `border-color`.

```
.border{ border-color:#D9AAA1 }
```

If you want to add a box shadow in that color use:

Here you see how a box with a 4 pixel #D9AAA1 colored shadow looks like.

```
.boxshadow{ -moz-box-shadow:4px 4px 4px  
4px #D9AAA1; -webkit-box-shadow:4px 4px  
4px 4px #D9AAA1; box-shadow:4px 4px 4px  
4px #D9AAA1 }
```

# Background

The CSS property to change the background color of an element to Decimal 14264993 is called "background". The background property can be set on classes, ids or directly on the HTML element.

```
.background, #background, body{  
background:#D9AAA1 }
```

If only the background color should be changed can be used:

```
.background{ background-color:#D9AAA1 }
```

This example shows the color as background, it is applied via the CSS property "background".

To optimize and compress your CSS code, you can use our [online CSS compressor and optimizer](#) based on csstidy. If you want to create a linear or radial gradient as background or border, check our [CSS Gradient Generator](#).



Hey! You found this booklet interesting? Support Converting Colors with the new Membership Option!

The pro membership hides all ads, plus gives you double the colors in the color bucket, and more awesome pro features!

**[Learn more, Memberships starting at \\$2.50/m!](#)**

**Follow me  
on Twitter!**

@ConvertingColor