

Converting Colors

Decimal(14265471)

Have a look what the booklet for
Decimal(14265471) contains.

Decimal(14265471)	3
<i>Conversions</i>	4
<i>Details</i>	6
<i>Harmonies</i>	11
<i>Previews</i>	23
<i>Color Blindness Simulation</i>	26
<i>CSS Examples</i>	29

Color

Decimal(14265471)

Conversions

Conversions Part 1

Format	Color
Hex	D9AC7F
RGB	217, 172, 127
RGB Percent	85%, 67%, 50%
CMY	0.1490, 0.3255, 0.5020
CMYK	0.00, 0.21, 0.41, 0.15
HSL	30°, 54%, 67%
HSV	30°, 41%, 85%
XYZ	47.1986, 45.7891, 26.4292
YIQ	180.3250, 41.2650, -4.4550

Conversions

Conversions Part 2

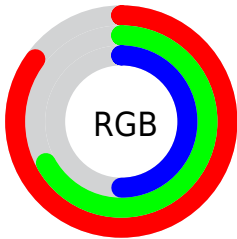
Format	Color
RYB	217, 217, 127
Decimal	14265471
CIELab	73.41, 10.56, 29.39
CIELCh	73, 31.234, 70.234
Yxy	45.7891, 0.3952, 0.3834
Android (android.graphics.Color)	4292455551 (0xFFD9AC7F)
YUV	180.3250, -26.2892, 32.1640
Hunter-Lab	67.6676, 6.0865, 24.2102

Details

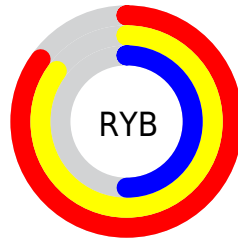
The Decimal color **14265471** is a light color, and the websafe version is hex **CC9966**. A complement of this color would be **8367321**, and the grayscale version is **11908533**.

A 20% lighter version of the original color is **16769972**, and **10516557** is the 20% darker color. If you saturate the color by 10%, you get **14262633**, and if you desaturate by 10%, it is **14268309**.

Distribution



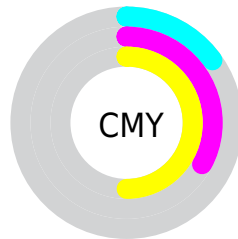
- Red (85%)
- Green (67%)
- Blue (50%)



- Red (85%)
- Yellow (85%)
- Blue (50%)



- Cyan (0%)
- Magenta (21%)
- Yellow (41%)
- Black (15%)



- Cyan (15%)
- Magenta (33%)
- Yellow (50%)

Brightness & Saturation Gradients

These gradients show how the Decimal color 14265471 changes by changing the brightness by 10 percent. The first figure shows a shift by +10% for each color and the second figure -10%.

Similar to the brightness gradients but the following saturation gradients show a change of the Decimal color 14265471 by changing the saturation by 10% instead.

 14265471

 14265471

16777215

 12357990

 16769972

 10516557

 16777168

 8740662

 16777196

 6965023

 5255433

 3611648

 2098176

 0

 14265471

 14265471

 14262633

 14268309

 14259796

 14271146

 14256958

 14273984

 14254376

 14276566

 14251539

 14279403

 14249216

 14282239

 14285055

 14286847

Harmonies

Analogous

The Analogous color harmony consists of three colors that are next to each other on the color wheel.



15377297



14265471



12564092

Triad

The Triadic color harmony groups three colors that are evenly spaced from another and form a triangle on the color wheel.



14265471



6407357



12954080

Complementary

The Complementary color scheme is a pair of colors which are on the opposite of each other on the color wheel.



14265471



8367321

Split Complementary

Split-complementary colors differ from the complementary color scheme. The scheme consists of three colors, the original color and two neighbors of the complement color.



10335468



14265471



5882584

Square

The Square scheme is like the rectangle color scheme, but the four colors are evenly spaced on the color wheel.



14265471



8242080



7650793



14787016

Rectangle

The Rectangle color scheme consists of four colors that form a rectangle on the color wheel.



14265471



11189122



7650793



12168678

Sweetspot

The Sweet Spot groups the original color and five complimentary colors.



14265471



16773344



14253996



8419182



0



8421504

Same Dimension

The Same Dimension uses a secret algorithm to generate beautiful new colors.



14265471



16760704



14276991



7235683



11360000



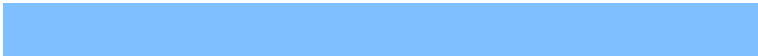
3020544

Inverse Universe

The Inverse Universe completely reimagines the original color for something new.



8367321



8437759



8355801



6514798



22445



5934

Previews

White Background



This preview shows how the Decimal color 14265471 looks on a white background.

Color Contrast Check

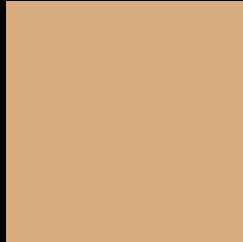
Large Text (above 18pt) WCAG AA × Fail

Any Text WCAG AA × Fail

Large Text (above 18pt) WCAG AAA × Fail

Any Text WCAG AAA × Fail

Black Background



This preview shows how the Decimal color 14265471 looks on a black background.

Color Contrast Check

Large Text (above 18pt) WCAG AA ✓ Pass

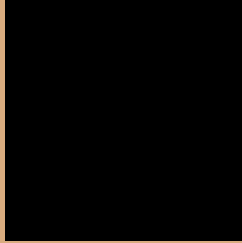
Any Text WCAG AA ✓ Pass

Large Text (above 18pt) WCAG AAA ✓ Pass

Any Text WCAG AAA ✓ Pass

If you want to check with other color combinations, try the [Color Contrast Checker](#).

Decimal 14265471 Background



This preview shows how black text looks on a background with the Decimal color 14265471.



This preview shows how white text looks on a background with the Decimal color 14265471.

Color Blindness Simulation

Color vision deficiency is a very complex topic, and I could not describe the different causes any better than Wikipedia does, so if you want to learn more, you should check out their [article about color blindness](#).


Dichromacy



Original Color
14265471

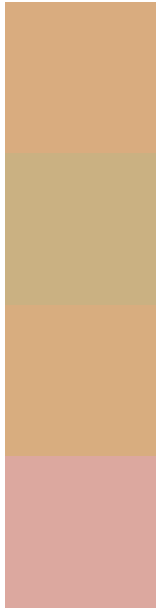
Protanopia
12760195

Deuteranopia
14134655



Tritanopia
14591410

Trichromacy



Original Color
14265471

Protanomaly
13283714

Deuteranomaly
14200191

Tritanomaly
14461087

Monochromacy



Original Color
14265471

Achromatopsia
11842740

Achromatomaly
12693921

CSS Examples

Text

The CSS property to change the color of the text to Decimal 14265471 is called "color". The color property can be set on classes, ids or directly on the HTML element.

This example shows how text in the color #D9AC7F looks like.

```
.text, #text, p{  
    color:#D9AC7F  
}
```

If you want to add a text shadow in that color use the text-shadow property, you can generate a text shadow directly with our [CSS Text Shadow Generator](#).

Here you see how black text with a 4 pixel #D9AC7F colored shadow looks like.

```
.shadow{ text-shadow: 4px 4px 2px #D9AC7F
}
```

Border

The CSS property to change the border of an element to Decimal 14265471 is called "border". The border property can be set on classes, ids or directly on the HTML element.

This example shows the color as border, it can be applied via the CSS property "border" or "border-color".

```
.border, #border, table{ border:4px solid
#D9AC7F }
```

If only the border color should be changed use the property `border-color`.

```
.border{ border-color:#D9AC7F }
```

If you want to add a box shadow in that color use:

Here you see how a box with a 4 pixel #D9AC7F colored shadow looks like.

```
.boxshadow{ -moz-box-shadow:4px 4px 4px  
4px #D9AC7F; -webkit-box-shadow:4px 4px  
4px 4px #D9AC7F; box-shadow:4px 4px 4px  
4px #D9AC7F }
```

Background

The CSS property to change the background color of an element to Decimal 14265471 is called "background". The background property can be set on classes, ids or directly on the HTML element.

```
.background, #background, body{  
background:#D9AC7F }
```

If only the background color should be changed can be used:

```
.background{ background-color:#D9AC7F }
```

This example shows the color as background, it is applied via the CSS property "background".

To optimize and compress your CSS code, you can use our [online CSS compressor and optimizer](#) based on csstidy. If you want to create a linear or radial gradient as background or border, check our [CSS Gradient Generator](#).

Hey! You found this booklet interesting? Support Converting Colors with the new Membership Option!

The pro membership hides all ads, plus gives you double the colors in the color bucket, and more awesome pro features!

[Learn more, Memberships starting at \\$2.50/m!](#)

**Follow me
on Twitter!**

@ConvertingColor