

# Converting Colors

Decimal(14266036)

Have a look what the booklet for  
Decimal(14266036) contains.

<b>Decimal(14266036)</b> .....	3
<i><b>Conversions</b></i> .....	4
<i><b>Details</b></i> .....	6
<i><b>Harmonies</b></i> .....	11
<i><b>Previews</b></i> .....	23
<i><b>Color Blindness Simulation</b></i> .....	26
<i><b>CSS Examples</b></i> .....	29

# **Color**

**Decimal(14266036)**

# Conversions

## Conversions Part 1

Format	Color
Hex	D9AEB4
RGB	217, 174, 180
RGB Percent	85%, 68%, 71%
CMY	0.1490, 0.3176, 0.2941
CMYK	0.00, 0.20, 0.17, 0.15
HSL	352°, 36%, 77%
HSV	352°, 20%, 85%
XYZ	51.9895, 48.3191, 49.7664
YIQ	187.5410, 23.7020, 10.9820

# Conversions

## Conversions Part 2

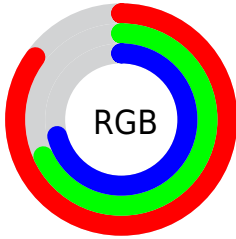
Format	Color
R <sub>Y</sub> B	217, 174, 180
Decimal	14266036
CIE Lab	75.03, 16.56, 2.88
CIE LCh	75, 16.808, 9.871
Yxy	48.3191, 0.3464, 0.3220
Android (android.graphics.Color)	4292456116 (0xFFD9AEB4)
YUV	187.5410, -3.7177, 25.8355
Hunter-Lab	69.5119, 11.8582, 6.2103

# Details

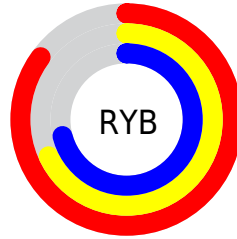
The Decimal color **14266036** is a light color, and the websafe version is hex **CC9999**. A complement of this color would be **11459027**, and the grayscale version is **12369084**.

A 20% lighter version of the original color is **16770796**, and **10647935** is the 20% darker color. If you saturate the color by 10%, you get **14260385**, and if you desaturate by 10%, it is **14271687**.

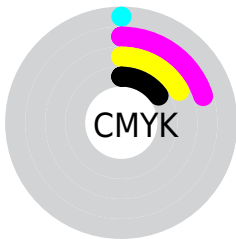
# Distribution



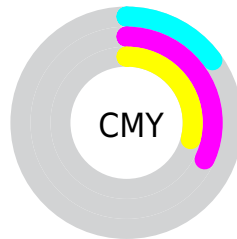
- Red (85%)
- Green (68%)
- Blue (71%)



- Red (85%)
- Yellow (68%)
- Blue (71%)



- Cyan (0%)
- Magenta (20%)
- Yellow (17%)
- Black (15%)



- Cyan (15%)
- Magenta (32%)
- Yellow (29%)

# Brightness & Saturation Gradients

These gradients show how the Decimal color 14266036 changes by changing the brightness by 10 percent. The first figure shows a shift by +10% for each color and the second figure -10%.

Similar to the brightness gradients but the following saturation gradients show a change of the Decimal color 14266036 by changing the saturation by 10% instead.



 14266036

 14266036

16777215

 12424089

 16770796

 10647935

 8872038

 7161934

 5517880

 3939362

 2491660

 0

 14266036

 14266036

 14260385

 14271687

 14254991

 14277081

 14249340

 14282732

 14243689

 14286847

 14238295

 14232644

 14226993

 14221343

 14221342

# Harmonies

## Analogous

The Analogous color harmony consists of three colors that are next to each other on the color wheel.



13742020



14266036



14200998

# Triad

The Triadic color harmony groups three colors that are evenly spaced from another and form a triangle on the color wheel.



14266036



11452065



10272213

# Complementary

The Complementary color scheme is a pair of colors which are on the opposite of each other on the color wheel.



14266036



11459027

# Split Complementary

Split-complementary colors differ from the complementary color scheme. The scheme consists of three colors, the original color and two neighbors of the complement color.



9552332



14266036



10338734

# Square

The Square scheme is like the rectangle color scheme, but the four colors are evenly spaced on the color wheel.



14266036



12630426



9618109



11450583

# Rectangle

The Rectangle color scheme consists of four colors that form a rectangle on the color wheel.



14266036



13808542



9618109



9945043

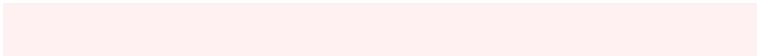


# Sweetspot

The Sweet Spot groups the original color and five complimentary colors.



14266036



16773362



13872857



8419192



0



8421504



# Same Dimension

The Same Dimension uses a secret algorithm to generate beautiful new colors.



14266036



16761546



14269870



7234404



11337752



3014662



# Inverse Universe

The Inverse Universe completely reimagines the original color for something new.



14266036



16761546



11455193



7234404



11337752



3014662



# Previews

## White Background



This preview shows how the Decimal color 14266036 looks on a white background.

## Color Contrast Check

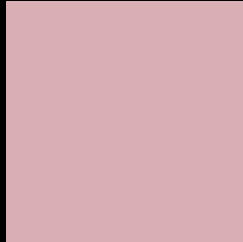
Large Text (above 18pt) WCAG AA × Fail

Any Text WCAG AA × Fail

Large Text (above 18pt) WCAG AAA × Fail

Any Text WCAG AAA × Fail

# Black Background



This preview shows how the Decimal color 14266036 looks on a black background.

## Color Contrast Check

Large Text (above 18pt) WCAG AA ✓ Pass

Any Text WCAG AA ✓ Pass

Large Text (above 18pt) WCAG AAA ✓ Pass

Any Text WCAG AAA ✓ Pass

If you want to check with other color combinations, try the [Color Contrast Checker](#).



## Decimal 14266036 Background



This preview shows how black text looks on a background with the Decimal color 14266036.



This preview shows how white text looks on a background with the Decimal color 14266036.

# Color Blindness Simulation

Color vision deficiency is a very complex topic, and I could not describe the different causes any better than Wikipedia does, so if you want to learn more, you should check out their [article about color blindness](#).


## Dichromacy



**Original Color**  
14266036

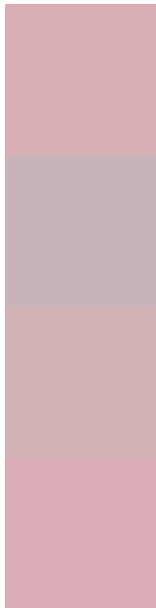
**Protanopia**  
12368058

**Deuteranopia**  
13480883



**Tritanopia**  
14331322

# Trichromacy



**Original Color**  
14266036

**Protanomaly**  
13087928

**Deuteranomaly**  
13742515

**Tritanomaly**  
14331320

# Monochromacy



**Original Color**  
14266036

**Achromatopsia**  
12369084

**Achromatomaly**  
13088697

# CSS Examples

## Text

The CSS property to change the color of the text to Decimal 14266036 is called "color". The color property can be set on classes, ids or directly on the HTML element.

This example shows how text in the color #D9AEB4 looks like.

```
.text, #text, p{  
    color:#D9AEB4  
}
```

If you want to add a text shadow in that color use the text-shadow property, you can generate a text shadow directly with our [CSS Text Shadow Generator](#).

Here you see how black text with a 4 pixel #D9AEB4 colored shadow looks like.

```
.shadow{ text-shadow: 4px 4px 2px #D9AEB4
}
```

## Border

The CSS property to change the border of an element to Decimal 14266036 is called "border". The border property can be set on classes, ids or directly on the HTML element.

This example shows the color as border, it can be applied via the CSS property "border" or "border-color".

```
.border, #border, table{ border:4px solid
#D9AEB4 }
```

If only the border color should be changed use the property `border-color`.

```
.border{ border-color:#D9AEB4 }
```

If you want to add a box shadow in that color use:

Here you see how a box with a 4 pixel #D9AEB4 colored shadow looks like.

```
.boxshadow{ -moz-box-shadow:4px 4px 4px  
4px #D9AEB4; -webkit-box-shadow:4px 4px  
4px 4px #D9AEB4; box-shadow:4px 4px 4px  
4px #D9AEB4 }
```

# Background

The CSS property to change the background color of an element to Decimal 14266036 is called "background". The background property can be set on classes, ids or directly on the HTML element.

```
.background, #background, body{  
background:#D9AEB4 }
```

If only the background color should be changed can be used:

```
.background{ background-color:#D9AEB4 }
```

This example shows the color as background, it is applied via the CSS property "background".

To optimize and compress your CSS code, you can use our [online CSS compressor and optimizer](#) based on csstidy. If you want to create a linear or radial gradient as background or border, check our [CSS Gradient Generator](#).



Hey! You found this booklet interesting? Support Converting Colors with the new Membership Option!

The pro membership hides all ads, plus gives you double the colors in the color bucket, and more awesome pro features!

**[Learn more, Memberships starting at \\$2.50/m!](#)**

**Follow me  
on Twitter!**

@ConvertingColor