

# Converting Colors

Decimal(14267020)

Have a look what the booklet for  
Decimal(14267020) contains.

<b>Decimal(14267020)</b> .....	3
<b><i>Conversions</i></b> .....	4
<b><i>Details</i></b> .....	6
<b><i>Harmonies</i></b> .....	11
<b><i>Previews</i></b> .....	23
<b><i>Color Blindness Simulation</i></b> .....	26
<b><i>CSS Examples</i></b> .....	29

# **Color**

**Decimal(14267020)**

# Conversions

## Conversions Part 1

Format	Color
Hex	D9B28C
RGB	217, 178, 140
RGB Percent	85%, 70%, 55%
CMY	0.1490, 0.3020, 0.4510
CMYK	0.00, 0.18, 0.35, 0.15
HSL	30°, 50%, 70%
HSV	30°, 35%, 85%
XYZ	49.2693, 48.4860, 31.5729
YIQ	185.3290, 35.4420, -3.5500

# Conversions

## Conversions Part 2

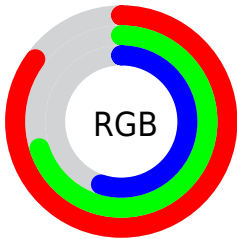
Format	Color
<a href="#">RYB</a>	<a href="#">217, 215, 140</a>
Decimal	<a href="#">14267020</a>
CIELab	<a href="#">75.13, 8.85, 24.74</a>
CIELCh	<a href="#">75, 26.278, 70.324</a>
Yxy	<a href="#">48.4860, 0.3810, 0.3749</a>
Android (android.graphics.Color)	<a href="#">4292457100 (0xFFD9B28C)</a>
YUV	<a href="#">185.3290, -22.3472, 27.7755</a>
Hunter-Lab	<a href="#">69.6319, 4.4452, 21.8587</a>

# Details

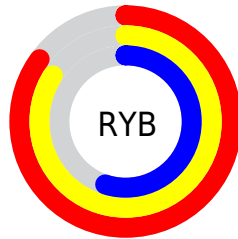
The Decimal color **14267020** is a light color, and the websafe version is hex **FFCC99**. A complement of this color would be **9221081**, and the grayscale version is **12237498**.

A 20% lighter version of the original color is **16771778**, and **10583386** is the 20% darker color. If you saturate the color by 10%, you get **14264182**, and if you desaturate by 10%, it is **14269858**.

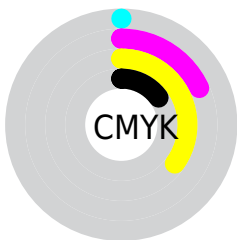
# Distribution



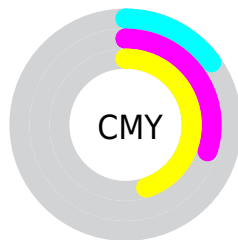
- Red (85%)
- Green (70%)
- Blue (55%)



- Red (85%)
- Yellow (84%)
- Blue (55%)



- Cyan (0%)
- Magenta (18%)
- Yellow (35%)
- Black (15%)



- Cyan (15%)
- Magenta (30%)
- Yellow (45%)

# Brightness & Saturation Gradients

These gradients show how the Decimal color 14267020 changes by changing the brightness by 10 percent. The first figure shows a shift by +10% for each color and the second figure -10%.

Similar to the brightness gradients but the following saturation gradients show a change of the Decimal color 14267020 by changing the saturation by 10% instead.



 14267020

 14267020

16777215

 12425074

 16771778

 10583386


 16777182

 8807490

 16777210

 7032107

 5387798

 3809280

 2231040

 0

 14267020

 14267020

 14264182

 14269858

 14261345

 14272695

 14258507

 14275533

 14255669

 14278371

 14252832

 14281209

 14249994

 14284031

 14248704

 14286847

# Harmonies

## Analogous

The Analogous color harmony consists of three colors that are next to each other on the color wheel.



15182747



14267020



12761737

# Triad

The Triadic color harmony groups three colors that are evenly spaced from another and form a triangle on the color wheel.



14267020



7849921



13086942

# Complementary

The Complementary color scheme is a pair of colors which are on the opposite of each other on the color wheel.



14267020



9221081

# Split Complementary

Split-complementary colors differ from the complementary color scheme. The scheme consists of three colors, the original color and two neighbors of the complement color.



10991848



14267020



7587287

# Square

The Square scheme is like the rectangle color scheme, but the four colors are evenly spaced on the color wheel.



14267020



9225640



8896742



14657994

# Rectangle

The Rectangle color scheme consists of four colors that form a rectangle on the color wheel.



14267020



11648911



8896742



12432355

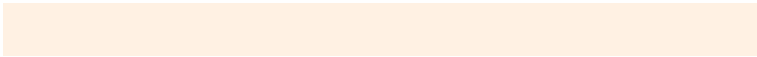


# Sweetspot

The Sweet Spot groups the original color and five complimentary colors.



14267020



16773603



14257332



8419183



0



8421504



# Same Dimension

The Same Dimension uses a secret algorithm to generate beautiful new colors.



14267020



16762769



14276748



7235683



11359744



3020544

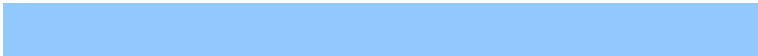


# Inverse Universe

The Inverse Universe completely reimagines the original color for something new.



9221081



9554431



9211353



6514798



22701

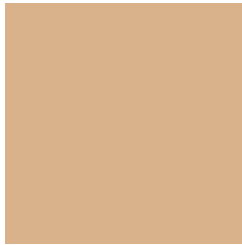


5934



# Previews

## White Background



This preview shows how the Decimal color 14267020 looks on a white background.

## Color Contrast Check

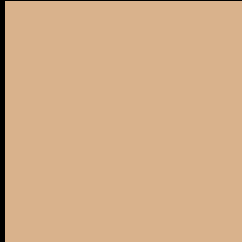
Large Text (above 18pt) WCAG AA × Fail

Any Text WCAG AA × Fail

Large Text (above 18pt) WCAG AAA × Fail

Any Text WCAG AAA × Fail

# Black Background



This preview shows how the Decimal color 14267020 looks on a black background.

## Color Contrast Check

Large Text (above 18pt) WCAG AA ✓ Pass

Any Text WCAG AA ✓ Pass

Large Text (above 18pt) WCAG AAA ✓ Pass

Any Text WCAG AAA ✓ Pass

If you want to check with other color combinations, try the [Color Contrast Checker](#).



## Decimal 14267020 Background



This preview shows how black text looks on a background with the Decimal color 14267020.




This preview shows how white text looks on a background with the Decimal color 14267020.

# Color Blindness Simulation

Color vision deficiency is a very complex topic, and I could not describe the different causes any better than Wikipedia does, so if you want to learn more, you should check out their [article about color blindness](#).

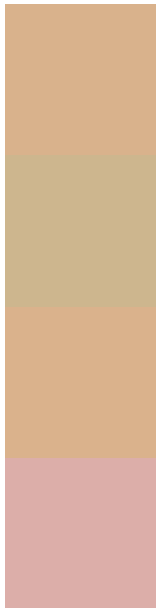
## Dichromacy





**Tritanopia**  
14593209

# Trichromacy



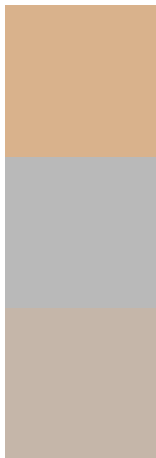
**Original Color**  
14267020

**Protanomaly**  
13481614

**Deuteranomaly**  
14332556

**Tritanomaly**  
14462633

# Monochromacy



**Original Color**  
14267020

**Achromatopsia**  
12171705

**Achromatomaly**  
12957353

# CSS Examples

## Text

The CSS property to change the color of the text to Decimal 14267020 is called "color". The color property can be set on classes, ids or directly on the HTML element.

This example shows how text in the color #D9B28C looks like.

```
.text, #text, p{  
    color:#D9B28C  
}
```

If you want to add a text shadow in that color use the text-shadow property, you can generate a text shadow directly with our [CSS Text Shadow Generator](#).

Here you see how black text with a 4 pixel #D9B28C colored shadow looks like.

```
.shadow{ text-shadow: 4px 4px 2px #D9B28C
}
```

## Border

The CSS property to change the border of an element to Decimal 14267020 is called "border". The border property can be set on classes, ids or directly on the HTML element.

This example shows the color as border, it can be applied via the CSS property "border" or "border-color".

```
.border, #border, table{ border:4px solid
#D9B28C }
```

If only the border color should be changed use the property `border-color`.

```
.border{ border-color:#D9B28C }
```

If you want to add a box shadow in that color use:

Here you see how a box with a 4 pixel #D9B28C colored shadow looks like.

```
.boxshadow{ -moz-box-shadow:4px 4px 4px  
4px #D9B28C; -webkit-box-shadow:4px 4px  
4px 4px #D9B28C; box-shadow:4px 4px 4px  
4px #D9B28C }
```

# Background

The CSS property to change the background color of an element to Decimal 14267020 is called "background". The background property can be set on classes, ids or directly on the HTML element.

```
.background, #background, body{  
background:#D9B28C }
```

If only the background color should be changed can be used:

```
.background{ background-color:#D9B28C }
```

This example shows the color as background, it is applied via the CSS property "background".

To optimize and compress your CSS code, you can use our [online CSS compressor and optimizer](#) based on csstidy. If you want to create a linear or radial gradient as background or border, check our [CSS Gradient Generator](#).



Hey! You found this booklet interesting? Support Converting Colors with the new Membership Option!

The pro membership hides all ads, plus gives you double the colors in the color bucket, and more awesome pro features!

**[Learn more, Memberships starting at \\$2.50/m!](#)**

**Follow me  
on Twitter!**

@ConvertingColor