

Converting Colors

Decimal(14267050)

Have a look what the booklet for
Decimal(14267050) contains.

Decimal(14267050)	3
<i>Conversions</i>	4
<i>Details</i>	6
<i>Harmonies</i>	11
<i>Previews</i>	23
<i>Color Blindness Simulation</i>	26
<i>CSS Examples</i>	29

Color

Decimal(14267050)

Conversions

Conversions Part 1

Format	Color
Hex	D9B2AA
RGB	217, 178, 170
RGB Percent	85%, 70%, 67%
CMY	0.1490, 0.3020, 0.3333
CMYK	0.00, 0.18, 0.22, 0.15
HSL	10°, 38%, 76%
HSV	10°, 22%, 85%
XYZ	51.7914, 49.4948, 44.8540
YIQ	188.7490, 25.8120, 5.7800

Conversions

Conversions Part 2

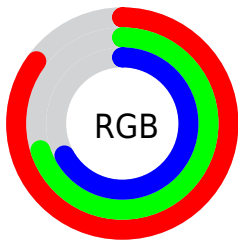
Format	Color
RYB	217, 180, 170
Decimal	14267050
CIELab	75.76, 12.88, 9.39
CIELCh	76, 15.941, 36.088
Yxy	49.4948, 0.3544, 0.3387
Android (android.graphics.Color)	4292457130 (0xFFD9B2AA)
YUV	188.7490, -9.2433, 24.7761
Hunter-Lab	70.3525, 8.2893, 11.4458

Details

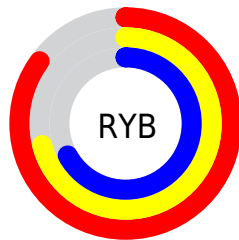
The Decimal color **14267050** is a light color, and the websafe version is hex **CC9999**. A complement of this color would be **11194841**, and the grayscale version is **12434877**.

A 20% lighter version of the original color is **16771809**, and **10583414** is the 20% darker color. If you saturate the color by 10%, you get **14262420**, and if you desaturate by 10%, it is **14271680**.

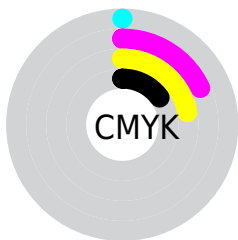
Distribution



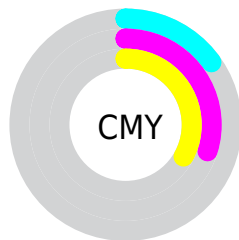
- Red (85%)
- Green (70%)
- Blue (67%)



- Red (85%)
- Yellow (71%)
- Blue (67%)



- Cyan (0%)
- Magenta (18%)
- Yellow (22%)
- Black (15%)



- Cyan (15%)
- Magenta (30%)
- Yellow (33%)

Brightness & Saturation Gradients

These gradients show how the Decimal color 14267050 changes by changing the brightness by 10 percent. The first figure shows a shift by +10% for each color and the second figure -10%.

Similar to the brightness gradients but the following saturation gradients show a change of the Decimal color 14267050 by changing the saturation by 10% instead.

 14267050

 14267050

16777215

 12425104

 16771809

 10583414

16777214

 8873053

 7162950

 5518639

 3940379

 2558464

 0

 14267050

 14267050

■ 14262420

■ 14271680

■ 14257791

■ 14276309

■ 14253161

■ 14280939

■ 14248531

■ 14285567

■ 14243901

■ 14286847

■ 14239272

■ 14234642

■ 14230784

Harmonies

Analogous

The Analogous color harmony consists of three colors that are next to each other on the color wheel.



14266808



14267050



13743776

Triad

The Triadic color harmony groups three colors that are evenly spaced from another and form a triangle on the color wheel.



14267050



10732206



11451352

Complementary

The Complementary color scheme is a pair of colors which are on the opposite of each other on the color wheel.



14267050



11194841

Split Complementary

Split-complementary colors differ from the complementary color scheme. The scheme consists of three colors, the original color and two neighbors of the complement color.



10403797



14267050



9946045

Square

The Square scheme is like the rectangle color scheme, but the four colors are evenly spaced on the color wheel.



14267050



11780003



9814731



12695250

Rectangle

The Rectangle color scheme consists of four colors that form a rectangle on the color wheel.



14267050



13154718



9814731



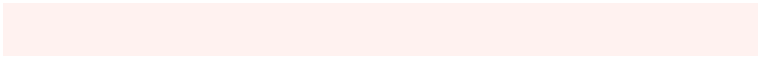
11058648

Sweetspot

The Sweet Spot groups the original color and five complimentary colors.



14267050



16773872



14265041



8419447



0



8421504

Same Dimension

The Same Dimension uses a secret algorithm to generate beautiful new colors.



14267050



16763069



14272938



7234915



11345408



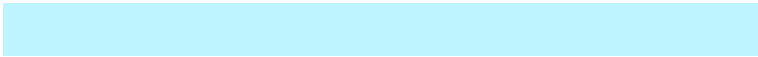
3016704

Inverse Universe

The Inverse Universe completely reimagines the original color for something new.



11194841



12449023



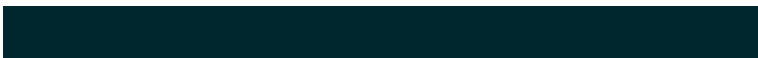
11188953



6515822



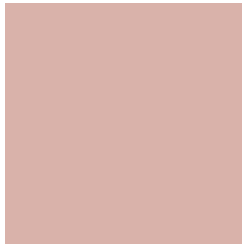
37037



9774

Previews

White Background



This preview shows how the Decimal color 14267050 looks on a white background.

Color Contrast Check

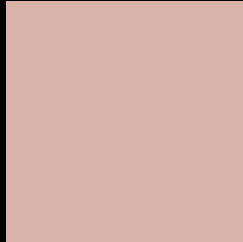
Large Text (above 18pt) WCAG AA × Fail

Any Text WCAG AA × Fail

Large Text (above 18pt) WCAG AAA × Fail

Any Text WCAG AAA × Fail

Black Background



This preview shows how the Decimal color 14267050 looks on a black background.

Color Contrast Check

Large Text (above 18pt) WCAG AA ✓ Pass

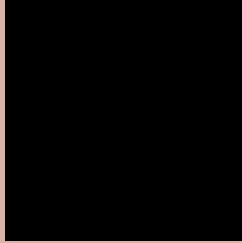
Any Text WCAG AA ✓ Pass

Large Text (above 18pt) WCAG AAA ✓ Pass

Any Text WCAG AAA ✓ Pass

If you want to check with other color combinations, try the [Color Contrast Checker](#).

Decimal 14267050 Background



This preview shows how black text looks on a background with the Decimal color 14267050.



This preview shows how white text looks on a background with the Decimal color 14267050.

Color Blindness Simulation

Color vision deficiency is a very complex topic, and I could not describe the different causes any better than Wikipedia does, so if you want to learn more, you should check out their [article about color blindness](#).

Dichromacy





Tritanopia
14397373

Trichromacy



Original Color
14267050

Protanomaly
13285293

Deuteranomaly
14005162

Tritanomaly
14332086

Monochromacy



Original Color
14267050

Achromatopsia
12434877

Achromatomaly
13089206

CSS Examples

Text

The CSS property to change the color of the text to Decimal 14267050 is called "color". The color property can be set on classes, ids or directly on the HTML element.

This example shows how text in the color #D9B2AA looks like.

```
.text, #text, p{  
    color:#D9B2AA  
}
```

If you want to add a text shadow in that color use the text-shadow property, you can generate a text shadow directly with our [CSS Text Shadow Generator](#).

Here you see how black text with a 4 pixel #D9B2AA colored shadow looks like.

```
.shadow{ text-shadow: 4px 4px 2px #D9B2AA
}
```

Border

The CSS property to change the border of an element to Decimal 14267050 is called "border". The border property can be set on classes, ids or directly on the HTML element.

This example shows the color as border, it can be applied via the CSS property "border" or "border-color".

```
.border, #border, table{ border:4px solid
#D9B2AA }
```

If only the border color should be changed use the property `border-color`.

```
.border{ border-color:#D9B2AA }
```

If you want to add a box shadow in that color use:

Here you see how a box with a 4 pixel #D9B2AA colored shadow looks like.

```
.boxshadow{ -moz-box-shadow:4px 4px 4px  
4px #D9B2AA; -webkit-box-shadow:4px 4px  
4px 4px #D9B2AA; box-shadow:4px 4px 4px  
4px #D9B2AA }
```

Background

The CSS property to change the background color of an element to Decimal 14267050 is called "background". The background property can be set on classes, ids or directly on the HTML element.

```
.background, #background, body{  
background:#D9B2AA }
```

If only the background color should be changed can be used:

```
.background{ background-color:#D9B2AA }
```

This example shows the color as background, it is applied via the CSS property "background".

To optimize and compress your CSS code, you can use our [online CSS compressor and optimizer](#) based on csstidy. If you want to create a linear or radial gradient as background or border, check our [CSS Gradient Generator](#).

Hey! You found this booklet interesting? Support Converting Colors with the new Membership Option!

The pro membership hides all ads, plus gives you double the colors in the color bucket, and more awesome pro features!

[Learn more, Memberships starting at \\$2.50/m!](#)

**Follow me
on Twitter!**

@ConvertingColor