

# Converting Colors

Decimal(14267574)

Have a look what the booklet for  
Decimal(14267574) contains.

<b>Decimal(14267574)</b> .....	3
<i><b>Conversions</b></i> .....	4
<i><b>Details</b></i> .....	6
<i><b>Harmonies</b></i> .....	11
<i><b>Previews</b></i> .....	23
<i><b>Color Blindness Simulation</b></i> .....	26
<i><b>CSS Examples</b></i> .....	29

# **Color**

**Decimal(14267574)**

# Conversions

## Conversions Part 1

Format	Color
Hex	D9B4B6
RGB	217, 180, 182
RGB Percent	85%, 71%, 71%
CMY	0.1490, 0.2941, 0.2863
CMYK	0.00, 0.17, 0.16, 0.15
HSL	357°, 33%, 78%
HSV	357°, 17%, 85%
XYZ	53.3800, 50.7716, 51.2424
YIQ	191.2910, 21.4100, 8.4660

# Conversions

## Conversions Part 2

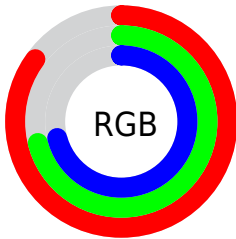
Format	Color
R <sub>Y</sub> B	217, 180, 182
Decimal	14267574
CIE Lab	76.54, 13.64, 3.98
CIE LCh	77, 14.214, 16.281
Yxy	50.7716, 0.3435, 0.3267
Android (android.graphics.Color)	4292457654 (0xFFD9B4B6)
YUV	191.2910, -4.5805, 22.5468
Hunter-Lab	71.2542, 9.0282, 7.2396

# Details

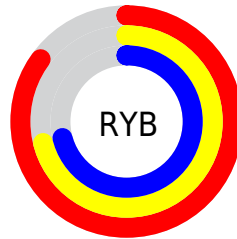
The Decimal color **14267574** is a light color, and the websafe version is hex **CC9999**. A complement of this color would be **11852247**, and the grayscale version is **12566463**.

A 20% lighter version of the original color is **16772334**, and **10649473** is the 20% darker color. If you saturate the color by 10%, you get **14261921**, and if you desaturate by 10%, it is **14273227**.

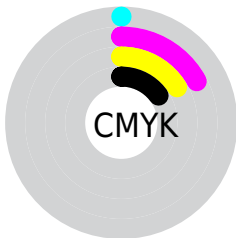
# Distribution



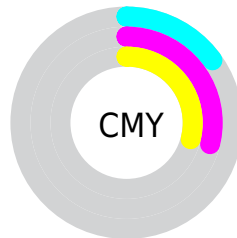
- Red (85%)
- Green (71%)
- Blue (71%)



- Red (85%)
- Yellow (71%)
- Blue (71%)



- Cyan (0%)
- Magenta (17%)
- Yellow (16%)
- Black (15%)



- Cyan (15%)
- Magenta (29%)
- Yellow (29%)

# Brightness & Saturation Gradients

These gradients show how the Decimal color 14267574 changes by changing the brightness by 10 percent. The first figure shows a shift by +10% for each color and the second figure -10%.

Similar to the brightness gradients but the following saturation gradients show a change of the Decimal color 14267574 by changing the saturation by 10% instead.



 14267574

 14267574

16777215

 12425627

 16772334

 10649473

 8873576

 7163472

 5584697

 4006180

 2558990

 0

 14267574

 14267574

 14261921

 14273227

 14256525

 14278623

 14250872

 14284276

 14245220

 14286847

 14239567

 14234171

 14228518

 14222866

 14221324

# Harmonies

## Analogous

The Analogous color harmony consists of three colors that are next to each other on the color wheel.



13939907



14267574



14137002

# Triad

The Triadic color harmony groups three colors that are evenly spaced from another and form a triangle on the color wheel.



14267574



11649706



11059414

# Complementary

The Complementary color scheme is a pair of colors which are on the opposite of each other on the color wheel.



14267574



11852247

# Split Complementary

Split-complementary colors differ from the complementary color scheme. The scheme consists of three colors, the original color and two neighbors of the complement color.



10339279



14267574



10732726

# Square

The Square scheme is like the rectangle color scheme, but the four colors are evenly spaced on the color wheel.



14267574



12631716



10274244



12106966

# Rectangle

The Rectangle color scheme consists of four colors that form a rectangle on the color wheel.



14267574



13744293



10274244



10731988

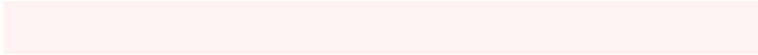


# Sweetspot

The Sweet Spot groups the original color and five complimentary colors.



14267574



16773875



14136537



8419448



0



8421504



# Same Dimension

The Same Dimension uses a secret algorithm to generate beautiful new colors.



14267574



16764111



14271668



7234403



11337737



3014658



# Inverse Universe

The Inverse Universe completely reimagines the original color for something new.



14267574



16764111



11848153



7234403



11337737

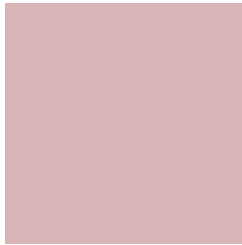


3014658



# Previews

## White Background



This preview shows how the Decimal color 14267574 looks on a white background.

## Color Contrast Check

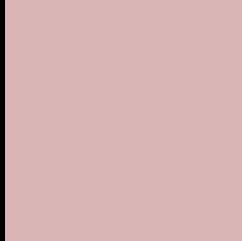
Large Text (above 18pt) WCAG AA × Fail

Any Text WCAG AA × Fail

Large Text (above 18pt) WCAG AAA × Fail

Any Text WCAG AAA × Fail

# Black Background



This preview shows how the Decimal color 14267574 looks on a black background.

## Color Contrast Check

Large Text (above 18pt) WCAG AA ✓ Pass

Any Text WCAG AA ✓ Pass

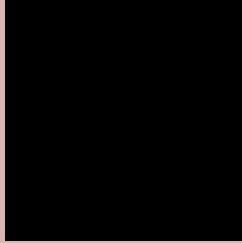
Large Text (above 18pt) WCAG AAA ✓ Pass

Any Text WCAG AAA ✓ Pass

If you want to check with other color combinations, try the [Color Contrast Checker](#).



## Decimal 14267574 Background



This preview shows how black text looks on a background with the Decimal color 14267574.



This preview shows how white text looks on a background with the Decimal color 14267574.

# Color Blindness Simulation

Color vision deficiency is a very complex topic, and I could not describe the different causes any better than Wikipedia does, so if you want to learn more, you should check out their [article about color blindness](#).


## Dichromacy



**Original Color**  
14267574

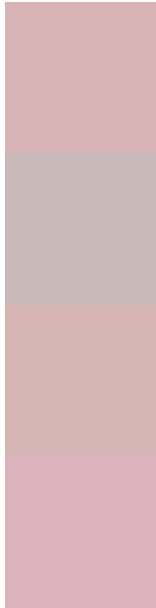
**Protanopia**  
12696763

**Deuteranopia**  
13809589



**Tritanopia**  
14332608

# Trichromacy



**Original Color**  
14267574

**Protanomaly**  
13285817

**Deuteranomaly**  
14005941

**Tritanomaly**  
14332860

# Monochromacy



**Original Color**  
14267574

**Achromatopsia**  
12566463

**Achromatomaly**  
13155260

# CSS Examples

## Text

The CSS property to change the color of the text to Decimal 14267574 is called "color". The color property can be set on classes, ids or directly on the HTML element.

This example shows how text in the color #D9B4B6 looks like.

```
.text, #text, p{  
    color:#D9B4B6  
}
```

If you want to add a text shadow in that color use the text-shadow property, you can generate a text shadow directly with our [CSS Text Shadow Generator](#).

Here you see how black text with a 4 pixel #D9B4B6 colored shadow looks like.

```
.shadow{ text-shadow: 4px 4px 2px #D9B4B6
}
```

## Border

The CSS property to change the border of an element to Decimal 14267574 is called "border". The border property can be set on classes, ids or directly on the HTML element.

This example shows the color as border, it can be applied via the CSS property "border" or "border-color".

```
.border, #border, table{ border:4px solid
#D9B4B6 }
```

If only the border color should be changed use the property `border-color`.

```
.border{ border-color:#D9B4B6 }
```

If you want to add a box shadow in that color use:

Here you see how a box with a 4 pixel #D9B4B6 colored shadow looks like.

```
.boxshadow{ -moz-box-shadow:4px 4px 4px  
4px #D9B4B6; -webkit-box-shadow:4px 4px  
4px 4px #D9B4B6; box-shadow:4px 4px 4px  
4px #D9B4B6 }
```

# Background

The CSS property to change the background color of an element to Decimal 14267574 is called "background". The background property can be set on classes, ids or directly on the HTML element.

```
.background, #background, body{  
background:#D9B4B6 }
```

If only the background color should be changed can be used:

```
.background{ background-color:#D9B4B6 }
```

This example shows the color as background, it is applied via the CSS property "background".

To optimize and compress your CSS code, you can use our [online CSS compressor and optimizer](#) based on csstidy. If you want to create a linear or radial gradient as background or border, check our [CSS Gradient Generator](#).



Hey! You found this booklet interesting? Support Converting Colors with the new Membership Option!

The pro membership hides all ads, plus gives you double the colors in the color bucket, and more awesome pro features!

**[Learn more, Memberships starting at \\$2.50/m!](#)**

**Follow me  
on Twitter!**

@ConvertingColor