

Converting Colors

Decimal(14268090)

Have a look what the booklet for
Decimal(14268090) contains.

Decimal(14268090)	3
<i>Conversions</i>	4
<i>Details</i>	6
<i>Harmonies</i>	11
<i>Previews</i>	23
<i>Color Blindness Simulation</i>	26
<i>CSS Examples</i>	29

Color

Decimal(14268090)

Conversions

Conversions Part 1

Format	Color
Hex	D9B6BA
RGB	217, 182, 186
RGB Percent	85%, 71%, 73%
CMY	0.1490, 0.2863, 0.2706
CMYK	0.00, 0.16, 0.14, 0.15
HSL	353°, 32%, 78%
HSV	353°, 16%, 85%
XYZ	54.2061, 51.7528, 53.5867
YIQ	192.9210, 19.5760, 8.6640

Conversions

Conversions Part 2

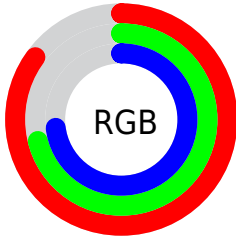
Format	Color
R _Y B	217, 182, 186
Decimal	14268090
CIE Lab	77.13, 13.21, 2.67
CIE LCh	77, 13.475, 11.424
Yxy	51.7528, 0.3398, 0.3244
Android (android.graphics.Color)	4292458170 (0xFFD9B6BA)
YUV	192.9210, -3.4121, 21.1173
Hunter-Lab	71.9394, 8.6053, 6.1933

Details

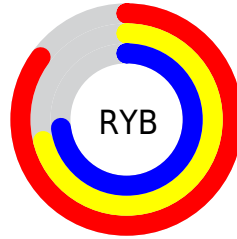
The Decimal color **14268090** is a light color, and the websafe version is hex **FFCCCC**. A complement of this color would be **11983317**, and the grayscale version is **12698049**.

A 20% lighter version of the original color is **16772850**, and **10649989** is the 20% darker color. If you saturate the color by 10%, you get **14262439**, and if you desaturate by 10%, it is **14273741**.

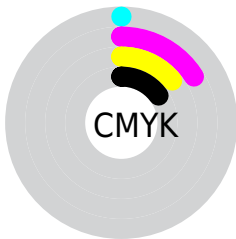
Distribution



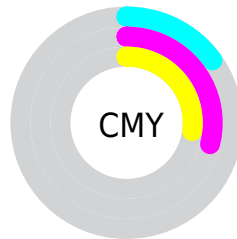
- Red (85%)
- Green (71%)
- Blue (73%)



- Red (85%)
- Yellow (71%)
- Blue (73%)



- Cyan (0%)
- Magenta (16%)
- Yellow (14%)
- Black (15%)



- Cyan (15%)
- Magenta (29%)
- Yellow (27%)

Brightness & Saturation Gradients

These gradients show how the Decimal color 14268090 changes by changing the brightness by 10 percent. The first figure shows a shift by +10% for each color and the second figure -10%.

Similar to the brightness gradients but the following saturation gradients show a change of the Decimal color 14268090 by changing the saturation by 10% instead.

 14268090

 14268090

16777215

 12426143

 16772850

 10649989

 8874092

 7229524

 5585212

 4006695

 2559506

 131072

 0

 14268090

 14268090

 14262439

 14273741

 14257044

 14279136

 14251392

 14284788

 14245741

 14286847

 14240346

 14234695

 14229043

 14223392

 14221337

Harmonies

Analogous

The Analogous color harmony consists of three colors that are next to each other on the color wheel.



13875143



14268090



14203054

Triad

The Triadic color harmony groups three colors that are evenly spaced from another and form a triangle on the color wheel.



14268090



11912108



11125462

Complementary

The Complementary color scheme is a pair of colors which are on the opposite of each other on the color wheel.



14268090



11983317

Split Complementary

Split-complementary colors differ from the complementary color scheme. The scheme consists of three colors, the original color and two neighbors of the complement color.



10536398



14268090



11060662

Square

The Square scheme is like the rectangle color scheme, but the four colors are evenly spaced on the color wheel.



14268090



12894118



10536643



12041943

Rectangle

The Rectangle color scheme consists of four colors that form a rectangle on the color wheel.



14268090



13875881



10536643



10863572

Sweetspot

The Sweet Spot groups the original color and five complimentary colors.



14268090



16773876



14005977



8419449



0



8421504

Same Dimension

The Same Dimension uses a secret algorithm to generate beautiful new colors.



14268090



16764884



14271414



7234404



11337748



3014661

Inverse Universe

The Inverse Universe completely reimagines the original color for something new.



14268090



16764884



11979993



7234404



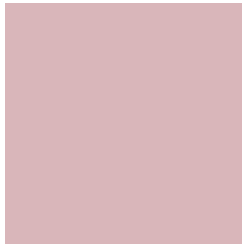
11337748



3014661

Previews

White Background



This preview shows how the Decimal color 14268090 looks on a white background.

Color Contrast Check

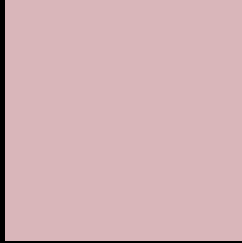
Large Text (above 18pt) WCAG AA × Fail

Any Text WCAG AA × Fail

Large Text (above 18pt) WCAG AAA × Fail

Any Text WCAG AAA × Fail

Black Background



This preview shows how the Decimal color 14268090 looks on a black background.

Color Contrast Check

Large Text (above 18pt) WCAG AA ✓ Pass

Any Text WCAG AA ✓ Pass

Large Text (above 18pt) WCAG AAA ✓ Pass

Any Text WCAG AAA ✓ Pass

If you want to check with other color combinations, try the [Color Contrast Checker](#).

Decimal 14268090 Background



This preview shows how black text looks on a background with the Decimal color 14268090.




This preview shows how white text looks on a background with the Decimal color 14268090.

Color Blindness Simulation

Color vision deficiency is a very complex topic, and I could not describe the different causes any better than Wikipedia does, so if you want to learn more, you should check out their [article about color blindness](#).

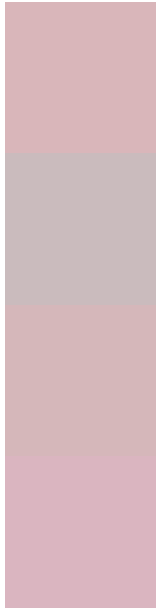
Dichromacy





Tritanopia
14333379

Trichromacy



Original Color
14268090

Protanomaly
13286333

Deuteranomaly
14006202

Tritanomaly
14333376

Monochromacy



Original Color
14268090

Achromatopsia
12698049

Achromatomaly
13286846

CSS Examples

Text

The CSS property to change the color of the text to Decimal 14268090 is called "color". The color property can be set on classes, ids or directly on the HTML element.

This example shows how text in the color #D9B6BA looks like.

```
.text, #text, p{  
    color:#D9B6BA  
}
```

If you want to add a text shadow in that color use the text-shadow property, you can generate a text shadow directly with our [CSS Text Shadow Generator](#).

Here you see how black text with a 4 pixel #D9B6BA colored shadow looks like.

```
.shadow{ text-shadow: 4px 4px 2px #D9B6BA
}
```

Border

The CSS property to change the border of an element to Decimal 14268090 is called "border". The border property can be set on classes, ids or directly on the HTML element.

This example shows the color as border, it can be applied via the CSS property "border" or "border-color".

```
.border, #border, table{ border:4px solid
#D9B6BA }
```

If only the border color should be changed use the property `border-color`.

```
.border{ border-color:#D9B6BA }
```

If you want to add a box shadow in that color use:

Here you see how a box with a 4 pixel #D9B6BA colored shadow looks like.

```
.boxshadow{ -moz-box-shadow:4px 4px 4px  
4px #D9B6BA; -webkit-box-shadow:4px 4px  
4px 4px #D9B6BA; box-shadow:4px 4px 4px  
4px #D9B6BA }
```

Background

The CSS property to change the background color of an element to Decimal 14268090 is called "background". The background property can be set on classes, ids or directly on the HTML element.

```
.background, #background, body{  
background:#D9B6BA }
```

If only the background color should be changed can be used:

```
.background{ background-color:#D9B6BA }
```

This example shows the color as background, it is applied via the CSS property "background".

To optimize and compress your CSS code, you can use our [online CSS compressor and optimizer](#) based on csstidy. If you want to create a linear or radial gradient as background or border, check our [CSS Gradient Generator](#).

Hey! You found this booklet interesting? Support Converting Colors with the new Membership Option!

The pro membership hides all ads, plus gives you double the colors in the color bucket, and more awesome pro features!

[Learn more, Memberships starting at \\$2.50/m!](#)

**Follow me
on Twitter!**

@ConvertingColor