

# Converting Colors

Decimal(14268570)

Have a look what the booklet for  
Decimal(14268570) contains.

<b>Decimal(14268570)</b> .....	3
<i><b>Conversions</b></i> .....	4
<i><b>Details</b></i> .....	6
<i><b>Harmonies</b></i> .....	11
<i><b>Previews</b></i> .....	23
<i><b>Color Blindness Simulation</b></i> .....	26
<i><b>CSS Examples</b></i> .....	29

# **Color**

**Decimal(14268570)**

# Conversions

## Conversions Part 1

Format	Color
Hex	D9B89A
RGB	217, 184, 154
RGB Percent	85%, 72%, 60%
CMY	0.1490, 0.2784, 0.3961
CMYK	0.00, 0.15, 0.29, 0.15
HSL	29°, 45%, 73%
HSV	29°, 29%, 85%
XYZ	51.5885, 51.3658, 37.7674
YIQ	190.4470, 29.2980, -2.3340

# Conversions

## Conversions Part 2

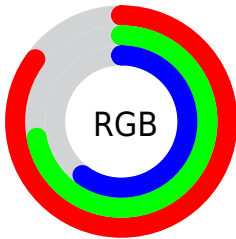
Format	Color
R <sub>Y</sub> B	217, 211, 154
Decimal	14268570
CIE Lab	76.90, 7.43, 19.65
CIE LCh	77, 21.005, 69.297
Yxy	51.3658, 0.3666, 0.3650
Android (android.graphics.Color)	4292458650 (0xFFD9B89A)
YUV	190.4470, -17.9684, 23.2870
Hunter-Lab	71.6699, 3.0631, 18.9253

# Details

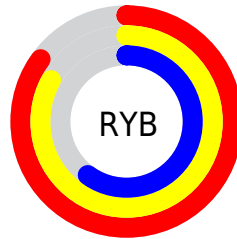
The Decimal color **14268570** is a light color, and the websafe version is hex **FFCC99**. A complement of this color would be **10140633**, and the grayscale version is **12566463**.

A 20% lighter version of the original color is **16773328**, and **10584935** is the 20% darker color. If you saturate the color by 10%, you get **14265732**, and if you desaturate by 10%, it is **14271408**.

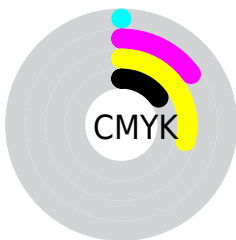
# Distribution



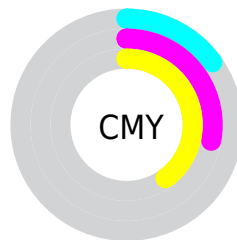
- Red (85%)
- Green (72%)
- Blue (60%)



- Red (85%)
- Yellow (83%)
- Blue (60%)



- Cyan (0%)
- Magenta (15%)
- Yellow (29%)
- Black (15%)



- Cyan (15%)
- Magenta (28%)
- Yellow (40%)

# Brightness & Saturation Gradients

These gradients show how the Decimal color 14268570 changes by changing the brightness by 10 percent. The first figure shows a shift by +10% for each color and the second figure -10%.

Similar to the brightness gradients but the following saturation gradients show a change of the Decimal color 14268570 by changing the saturation by 10% instead.



 14268570

 14268570


16777215

 12426624

 16773328

 10584935

 16777197

 8809039

 7098936

 5454626

 3876108

 2363648

 0

 14268570

 14268570

 14265732

 14271408

 14262639

 14274501

 14259801

 14277339

 14256963

 14280177

 14253870

 14283263

 14251032

 14286079

 14247938

 14286847

 14247680

# Harmonies

## Analogous

The Analogous color harmony consists of three colors that are next to each other on the color wheel.



14988198



14268570



13090456

# Triad

The Triadic color harmony groups three colors that are evenly spaced from another and form a triangle on the color wheel.



14268570



9226691



13219804

# Complementary

The Complementary color scheme is a pair of colors which are on the opposite of each other on the color wheel.



14268570



10140633

# Split Complementary

Split-complementary colors differ from the complementary color scheme. The scheme consists of three colors, the original color and two neighbors of the complement color.



11517412



14268570



9095382

# Square

The Square scheme is like the rectangle color scheme, but the four colors are evenly spaced on the color wheel.



14268570



10209455



9946338



14463692

# Rectangle

The Rectangle color scheme consists of four colors that form a rectangle on the color wheel.



14268570



12108444



9946338



12696032

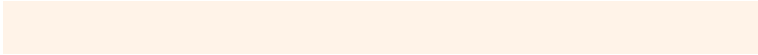


# Sweetspot

The Sweet Spot groups the original color and five complimentary colors.



14268570



16774120



14260924



8419441



0



8421504



# Same Dimension

The Same Dimension uses a secret algorithm to generate beautiful new colors.



14268570



16765094



14276506



7235683



11358976



3020288

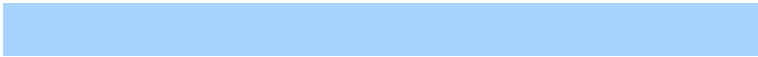


# Inverse Universe

The Inverse Universe completely reimagines the original color for something new.



10140633



10933503



10132697



6514798



23469

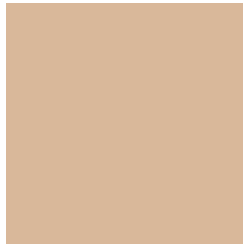


6190



# Previews

## White Background



This preview shows how the Decimal color 14268570 looks on a white background.

## Color Contrast Check

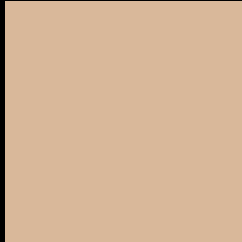
Large Text (above 18pt) WCAG AA × Fail

Any Text WCAG AA × Fail

Large Text (above 18pt) WCAG AAA × Fail

Any Text WCAG AAA × Fail

# Black Background



This preview shows how the Decimal color 14268570 looks on a black background.

## Color Contrast Check

Large Text (above 18pt) WCAG AA ✓ Pass

Any Text WCAG AA ✓ Pass

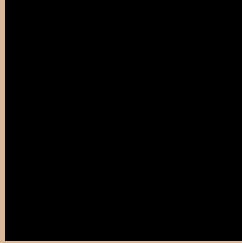
Large Text (above 18pt) WCAG AAA ✓ Pass

Any Text WCAG AAA ✓ Pass

If you want to check with other color combinations, try the [Color Contrast Checker](#).



## Decimal 14268570 Background



This preview shows how black text looks on a background with the Decimal color 14268570.



This preview shows how white text looks on a background with the Decimal color 14268570.

# Color Blindness Simulation

Color vision deficiency is a very complex topic, and I could not describe the different causes any better than Wikipedia does, so if you want to learn more, you should check out their [article about color blindness](#).

## Dichromacy





**Tritanopia**  
14529472

# Trichromacy



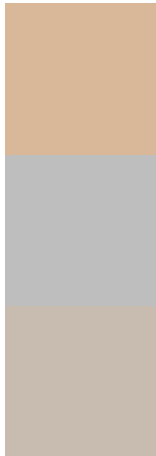
**Original Color**  
14268570

**Protanomaly**  
13614236

**Deuteranomaly**  
14464922

**Tritanomaly**  
14464434

# Monochromacy



**Original Color**  
14268570

**Achromatopsia**  
12500670

**Achromatomaly**  
13155505

# CSS Examples

## Text

The CSS property to change the color of the text to Decimal 14268570 is called "color". The color property can be set on classes, ids or directly on the HTML element.

This example shows how text in the color #D9B89A looks like.

```
.text, #text, p{  
    color:#D9B89A  
}
```

If you want to add a text shadow in that color use the text-shadow property, you can generate a text shadow directly with our [CSS Text Shadow Generator](#).

Here you see how black text with a 4 pixel #D9B89A colored shadow looks like.

```
.shadow{ text-shadow: 4px 4px 2px #D9B89A
}
```

## Border

The CSS property to change the border of an element to Decimal 14268570 is called "border". The border property can be set on classes, ids or directly on the HTML element.

This example shows the color as border, it can be applied via the CSS property "border" or "border-color".

```
.border, #border, table{ border:4px solid
#D9B89A }
```

If only the border color should be changed use the property `border-color`.

```
.border{ border-color:#D9B89A }
```

If you want to add a box shadow in that color use:

Here you see how a box with a 4 pixel #D9B89A colored shadow looks like.

```
.boxshadow{ -moz-box-shadow:4px 4px 4px  
4px #D9B89A; -webkit-box-shadow:4px 4px  
4px 4px #D9B89A; box-shadow:4px 4px 4px  
4px #D9B89A }
```

# Background

The CSS property to change the background color of an element to Decimal 14268570 is called "background". The background property can be set on classes, ids or directly on the HTML element.

```
.background, #background, body{  
background:#D9B89A }
```

If only the background color should be changed can be used:

```
.background{ background-color:#D9B89A }
```

This example shows the color as background, it is applied via the CSS property "background".

To optimize and compress your CSS code, you can use our [online CSS compressor and optimizer](#) based on csstidy. If you want to create a linear or radial gradient as background or border, check our [CSS Gradient Generator](#).



Hey! You found this booklet interesting? Support Converting Colors with the new Membership Option!

The pro membership hides all ads, plus gives you double the colors in the color bucket, and more awesome pro features!

**[Learn more, Memberships starting at \\$2.50/m!](#)**

**Follow me  
on Twitter!**

@ConvertingColor