

Converting Colors

Decimal(14269337)

Have a look what the booklet for
Decimal(14269337) contains.

Decimal(14269337)	3
<i>Conversions</i>	4
<i>Details</i>	6
<i>Harmonies</i>	11
<i>Previews</i>	23
<i>Color Blindness Simulation</i>	26
<i>CSS Examples</i>	29

Color

Decimal(14269337)

Conversions

Conversions Part 1

Format	Color
Hex	D9BB99
RGB	217, 187, 153
RGB Percent	85%, 73%, 60%
CMY	0.1490, 0.2667, 0.4000
CMYK	0.00, 0.14, 0.29, 0.15
HSL	32°, 46%, 73%
HSV	32°, 29%, 85%
XYZ	52.1354, 52.5923, 37.5405
YIQ	192.0940, 28.7940, -4.2140

Conversions

Conversions Part 2

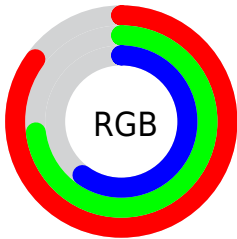
Format	Color
R_{YB}	209, 217, 153
Decimal	14269337
CIE _{Lab}	77.63, 5.70, 21.20
CIE _{LCh}	78, 21.949, 74.948
Yxy	52.5923, 0.3665, 0.3697
Android (android.graphics.Color)	4292459417 (0xFFD9BB99)
YUV	192.0940, -19.2733, 21.8426
Hunter-Lab	72.5205, 1.4136, 20.0727

Details

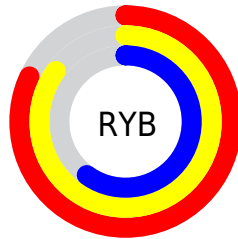
The Decimal color **14269337** is a light color, and the websafe version is hex **FFCC99**. A complement of this color would be **10074073**, and the grayscale version is **12632256**.

A 20% lighter version of the original color is **16774095**, and **10585702** is the 20% darker color. If you saturate the color by 10%, you get **14266755**, and if you desaturate by 10%, it is **14271919**.

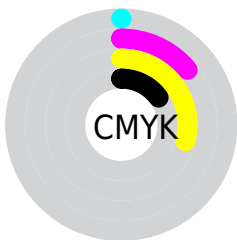
Distribution



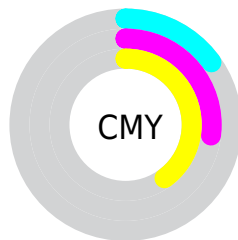
- Red (85%)
- Green (73%)
- Blue (60%)



- Red (82%)
- Yellow (85%)
- Blue (60%)



- Cyan (0%)
- Magenta (14%)
- Yellow (29%)
- Black (15%)



- Cyan (15%)
- Magenta (27%)
- Yellow (40%)

Brightness & Saturation Gradients

These gradients show how the Decimal color 14269337 changes by changing the brightness by 10 percent. The first figure shows a shift by +10% for each color and the second figure -10%.

Similar to the brightness gradients but the following saturation gradients show a change of the Decimal color 14269337 by changing the saturation by 10% instead.

 14269337

 14269337

16777215

 12427391

 16774095

 10585702

 16777196

 8809806

 7099447

 5455137

 3876875

 2364160

 0

 14269337

 14269337

 14266755

 14271919

 14264174

 14274500

 14261336

 14277338

 14258754

 14279920

 14256172

 14282495

 14253591

 14285055

 14251009

 14286847

 14250752

Harmonies

Analogous

The Analogous color harmony consists of three colors that are next to each other on the color wheel.



15119780



14269337



12960408

Triad

The Triadic color harmony groups three colors that are evenly spaced from another and form a triangle on the color wheel.



14269337



9096394



13678557

Complementary

The Complementary color scheme is a pair of colors which are on the opposite of each other on the color wheel.



14269337



10074073

Split Complementary

Split-complementary colors differ from the complementary color scheme. The scheme consists of three colors, the original color and two neighbors of the complement color.



11976423



14269337



9095644

Square

The Square scheme is like the rectangle color scheme, but the four colors are evenly spaced on the color wheel.



14269337



10013621



10274279



14857163

Rectangle

The Rectangle color scheme consists of four colors that form a rectangle on the color wheel.



14269337



11912862



10274279



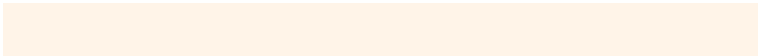
13155041

Sweetspot

The Sweet Spot groups the original color and five complimentary colors.



14269337



16774376



14260664



8419697



0



8421504

Same Dimension

The Same Dimension uses a secret algorithm to generate beautiful new colors.



14269337



16766374



14211481



7235939



11361280



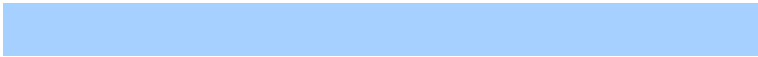
3020800

Inverse Universe

The Inverse Universe completely reimagines the original color for something new.



10074073



10932479



10131929



6514798



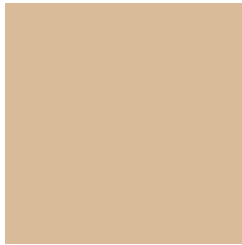
20909



5678

Previews

White Background



This preview shows how the Decimal color 14269337 looks on a white background.

Color Contrast Check

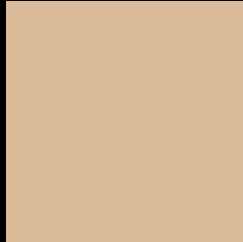
Large Text (above 18pt) WCAG AA × Fail

Any Text WCAG AA × Fail

Large Text (above 18pt) WCAG AAA × Fail

Any Text WCAG AAA × Fail

Black Background



This preview shows how the Decimal color 14269337 looks on a black background.

Color Contrast Check

Large Text (above 18pt) WCAG AA ✓ Pass

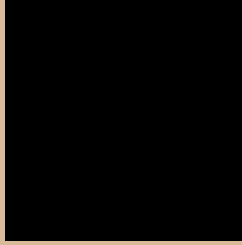
Any Text WCAG AA ✓ Pass

Large Text (above 18pt) WCAG AAA ✓ Pass

Any Text WCAG AAA ✓ Pass

If you want to check with other color combinations, try the [Color Contrast Checker](#).

Decimal 14269337 Background



This preview shows how black text looks on a background with the Decimal color 14269337.




This preview shows how white text looks on a background with the Decimal color 14269337.

Color Blindness Simulation

Color vision deficiency is a very complex topic, and I could not describe the different causes any better than Wikipedia does, so if you want to learn more, you should check out their [article about color blindness](#).

Dichromacy





Tritanopia
14595523

Trichromacy



Monochromacy



CSS Examples

Text

The CSS property to change the color of the text to Decimal 14269337 is called "color". The color property can be set on classes, ids or directly on the HTML element.

This example shows how text in the color #D9BB99 looks like.

```
.text, #text, p{  
    color:#D9BB99  
}
```

If you want to add a text shadow in that color use the text-shadow property, you can generate a text shadow directly with our [CSS Text Shadow Generator](#).

Here you see how black text with a 4 pixel #D9BB99 colored shadow looks like.

```
.shadow{ text-shadow: 4px 4px 2px #D9BB99
}
```

Border

The CSS property to change the border of an element to Decimal 14269337 is called "border". The border property can be set on classes, ids or directly on the HTML element.

This example shows the color as border, it can be applied via the CSS property "border" or "border-color".

```
.border, #border, table{ border:4px solid
#D9BB99 }
```

If only the border color should be changed use the property `border-color`.

```
.border{ border-color:#D9BB99 }
```

If you want to add a box shadow in that color use:

Here you see how a box with a 4 pixel #D9BB99 colored shadow looks like.

```
.boxshadow{ -moz-box-shadow:4px 4px 4px  
4px #D9BB99; -webkit-box-shadow:4px 4px  
4px 4px #D9BB99; box-shadow:4px 4px 4px  
4px #D9BB99 }
```

Background

The CSS property to change the background color of an element to Decimal 14269337 is called "background". The background property can be set on classes, ids or directly on the HTML element.

```
.background, #background, body{  
background:#D9BB99 }
```

If only the background color should be changed can be used:

```
.background{ background-color:#D9BB99 }
```

This example shows the color as background, it is applied via the CSS property "background".

To optimize and compress your CSS code, you can use our [online CSS compressor and optimizer](#) based on csstidy. If you want to create a linear or radial gradient as background or border, check our [CSS Gradient Generator](#).

Hey! You found this booklet interesting? Support Converting Colors with the new Membership Option!

The pro membership hides all ads, plus gives you double the colors in the color bucket, and more awesome pro features!

[Learn more, Memberships starting at \\$2.50/m!](#)

**Follow me
on Twitter!**

@ConvertingColor