

# Converting Colors

Decimal(14269852)

Have a look what the booklet for  
Decimal(14269852) contains.

<b>Decimal(14269852)</b> .....	3
<i><b>Conversions</b></i> .....	4
<i><b>Details</b></i> .....	6
<i><b>Harmonies</b></i> .....	11
<i><b>Previews</b></i> .....	23
<i><b>Color Blindness Simulation</b></i> .....	26
<i><b>CSS Examples</b></i> .....	29

# **Color**

**Decimal(14269852)**

# Conversions

## Conversions Part 1

Format	Color
Hex	D9BD9C
RGB	217, 189, 156
RGB Percent	85%, 74%, 61%
CMY	0.1490, 0.2588, 0.3882
CMYK	0.00, 0.13, 0.28, 0.15
HSL	32°, 45%, 73%
HSV	32°, 28%, 85%
XYZ	52.8136, 53.5472, 39.0046
YIQ	193.6100, 27.2810, -4.3270

# Conversions

## Conversions Part 2

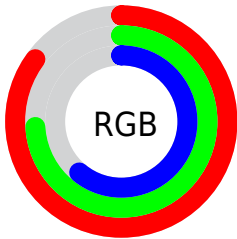
Format	Color
R <sub>Y</sub> B	208, 217, 156
Decimal	14269852
CIE Lab	78.20, 5.04, 20.37
CIE LCh	78, 20.981, 76.103
Yxy	53.5472, 0.3633, 0.3684
Android (android.graphics.Color)	4292459932 (0xFFD9BD9C)
YUV	193.6100, -18.5417, 20.5130
Hunter-Lab	73.1760, 0.7717, 19.6202

# Details

The Decimal color **14269852** is a light color, and the websafe version is hex **CCCC99**. A complement of this color would be **10270937**, and the grayscale version is **12763842**.

A 20% lighter version of the original color is **16774611**, and **10586217** is the 20% darker color. If you saturate the color by 10%, you get **14267270**, and if you desaturate by 10%, it is **14272434**.

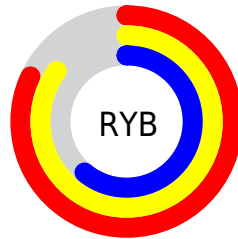
# Distribution



Red (85%)

Green (74%)

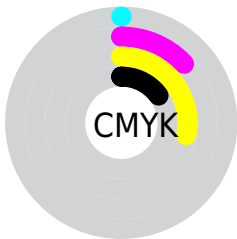
Blue (61%)



Red (82%)

Yellow (85%)

Blue (61%)

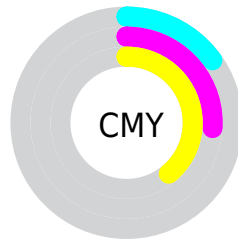


Cyan (0%)

Magenta (13%)

Yellow (28%)

Black (15%)



Cyan (15%)

Magenta (26%)

Yellow (39%)

# Brightness & Saturation Gradients

These gradients show how the Decimal color 14269852 changes by changing the brightness by 10 percent. The first figure shows a shift by +10% for each color and the second figure -10%.

Similar to the brightness gradients but the following saturation gradients show a change of the Decimal color 14269852 by changing the saturation by 10% instead.



 14269852

 14269852

16777215

 12427906

 16774611

 10586217

 16777199

 8875600

 7165497

 5455651

 3877134

 2430208

 0

 14269852

 14269852

 14267270

 14272434

 14264689

 14275015

 14262107

 14277597

 14259525

 14280179

 14256944

 14282751

 14254362

 14285311

 14251780

 14286847

 14251264

# Harmonies

## Analogous

The Analogous color harmony consists of three colors that are next to each other on the color wheel.



15120294



14269852



12960668

# Triad

The Triadic color harmony groups three colors that are evenly spaced from another and form a triangle on the color wheel.



14269852



9358795



13810141

# Complementary

The Complementary color scheme is a pair of colors which are on the opposite of each other on the color wheel.



14269852



10270937

# Split Complementary

Split-complementary colors differ from the complementary color scheme. The scheme consists of three colors, the original color and two neighbors of the complement color.



12173543



14269852



9423837

# Square

The Square scheme is like the rectangle color scheme, but the four colors are evenly spaced on the color wheel.



14269852



10210487



10536679



14923211

# Rectangle

The Rectangle color scheme consists of four colors that form a rectangle on the color wheel.



14269852



12044194



10536679



13286369

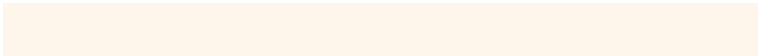


# Sweetspot

The Sweet Spot groups the original color and five complimentary colors.



14269852



16774891



14261432



8419955



0



8421504



# Same Dimension

The Same Dimension uses a secret algorithm to generate beautiful new colors.



14269852



16766888



14145948



7235939



11361792



3021056

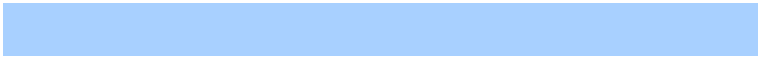


# Inverse Universe

The Inverse Universe completely reimagines the original color for something new.



10270937



11063551



10394841



6514798



20653



5422



# Previews

## White Background



This preview shows how the Decimal color 14269852 looks on a white background.

## Color Contrast Check

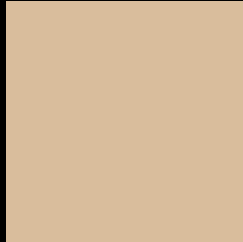
Large Text (above 18pt) WCAG AA × Fail

Any Text WCAG AA × Fail

Large Text (above 18pt) WCAG AAA × Fail

Any Text WCAG AAA × Fail

# Black Background



This preview shows how the Decimal color 14269852 looks on a black background.

## Color Contrast Check

Large Text (above 18pt) WCAG AA ✓ Pass

Any Text WCAG AA ✓ Pass

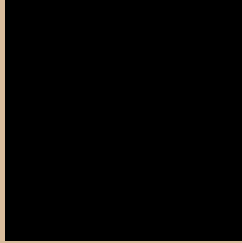
Large Text (above 18pt) WCAG AAA ✓ Pass

Any Text WCAG AAA ✓ Pass

If you want to check with other color combinations, try the [Color Contrast Checker](#).



## Decimal 14269852 Background



This preview shows how black text looks on a background with the Decimal color 14269852.



This preview shows how white text looks on a background with the Decimal color 14269852.

# Color Blindness Simulation

Color vision deficiency is a very complex topic, and I could not describe the different causes any better than Wikipedia does, so if you want to learn more, you should check out their [article about color blindness](#).


## Dichromacy



**Original Color**  
14269852

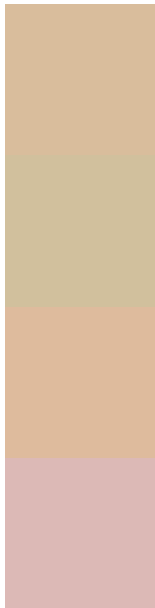
**Protanopia**  
13484446

**Deuteranopia**  
14793373



**Tritanopia**  
14596037

# Trichromacy



**Original Color**  
14269852

**Protanomaly**  
13746333

**Deuteranomaly**  
14597021

**Tritanomaly**  
14465462

# Monochromacy



**Original Color**  
14269852

**Achromatopsia**  
12763842

**Achromatomaly**  
13287604

# CSS Examples

## Text

The CSS property to change the color of the text to Decimal 14269852 is called "color". The color property can be set on classes, ids or directly on the HTML element.

This example shows how text in the color #D9BD9C looks like.

```
.text, #text, p{  
    color:#D9BD9C  
}
```

If you want to add a text shadow in that color use the text-shadow property, you can generate a text shadow directly with our [CSS Text Shadow Generator](#).

Here you see how black text with a 4 pixel #D9BD9C colored shadow looks like.

```
.shadow{ text-shadow: 4px 4px 2px #D9BD9C
}
```

## Border

The CSS property to change the border of an element to Decimal 14269852 is called "border". The border property can be set on classes, ids or directly on the HTML element.

This example shows the color as border, it can be applied via the CSS property "border" or "border-color".

```
.border, #border, table{ border:4px solid
#D9BD9C }
```

If only the border color should be changed use the property `border-color`.

```
.border{ border-color:#D9BD9C }
```

If you want to add a box shadow in that color use:

Here you see how a box with a 4 pixel #D9BD9C colored shadow looks like.

```
.boxshadow{ -moz-box-shadow:4px 4px 4px  
4px #D9BD9C; -webkit-box-shadow:4px 4px  
4px 4px #D9BD9C; box-shadow:4px 4px 4px  
4px #D9BD9C }
```

# Background

The CSS property to change the background color of an element to Decimal 14269852 is called "background". The background property can be set on classes, ids or directly on the HTML element.

```
.background, #background, body{  
background:#D9BD9C }
```

If only the background color should be changed can be used:

```
.background{ background-color:#D9BD9C }
```

This example shows the color as background, it is applied via the CSS property "background".

To optimize and compress your CSS code, you can use our [online CSS compressor and optimizer](#) based on csstidy. If you want to create a linear or radial gradient as background or border, check our [CSS Gradient Generator](#).



Hey! You found this booklet interesting? Support Converting Colors with the new Membership Option!

The pro membership hides all ads, plus gives you double the colors in the color bucket, and more awesome pro features!

**[Learn more, Memberships starting at \\$2.50/m!](#)**

**Follow me  
on Twitter!**

@ConvertingColor