

Converting Colors

Decimal(14270645)

Have a look what the booklet for
Decimal(14270645) contains.

Decimal(14270645)	3
<i>Conversions</i>	4
<i>Details</i>	6
<i>Harmonies</i>	11
<i>Previews</i>	23
<i>Color Blindness Simulation</i>	26
<i>CSS Examples</i>	29

Color

Decimal(14270645)

Conversions

Conversions Part 1

Format	Color
Hex	D9C0B5
RGB	217, 192, 181
RGB Percent	85%, 75%, 71%
CMY	0.1490, 0.2471, 0.2902
CMYK	0.00, 0.12, 0.17, 0.15
HSL	18°, 32%, 78%
HSV	18°, 17%, 85%
XYZ	55.8054, 55.7872, 51.5428
YIQ	198.2210, 18.4310, 1.8790

Conversions

Conversions Part 2

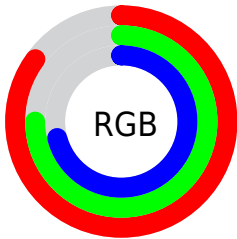
Format	Color
RYB	217, 197, 181
Decimal	14270645
CIELab	79.49, 7.07, 8.77
CIELCh	79, 11.269, 51.111
Yxy	55.7872, 0.3421, 0.3420
Android (android.graphics.Color)	4292460725 (0xFFD9C0B5)
YUV	198.2210, -8.4900, 16.4692
Hunter-Lab	74.6908, 2.6577, 11.3686

Details

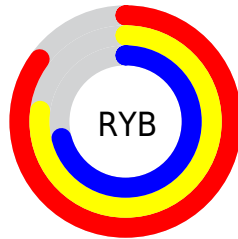
The Decimal color **14270645** is a light color, and the websafe version is hex **CCCCCC**. A complement of this color would be **11914969**, and the grayscale version is **13027014**.

A 20% lighter version of the original color is **16775405**, and **10652544** is the 20% darker color. If you saturate the color by 10%, you get **14266783**, and if you desaturate by 10%, it is **14274507**.

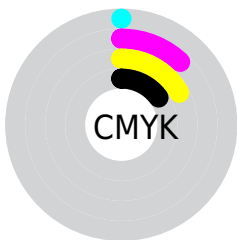
Distribution



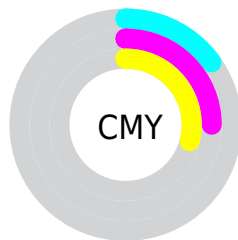
- Red (85%)
- Green (75%)
- Blue (71%)



- Red (85%)
- Yellow (77%)
- Blue (71%)



- Cyan (0%)
- Magenta (12%)
- Yellow (17%)
- Black (15%)



- Cyan (15%)
- Magenta (25%)
- Yellow (29%)

Brightness & Saturation Gradients

These gradients show how the Decimal color 14270645 changes by changing the brightness by 10 percent. The first figure shows a shift by +10% for each color and the second figure -10%.

Similar to the brightness gradients but the following saturation gradients show a change of the Decimal color 14270645 by changing the saturation by 10% instead.

 14270645

 14270645

16777215

 12428698

 16775405

 10652544

 8876391

 7231823

 5587256

 4008739

 2561805

 851968

 0

 14270645

 14270645

 14266783

 14274507

 14262922

 14278368

 14259060

 14282230

 14255198

 14286079

 14251337

 14286847

 14247475

 14243613

 14239495

 14238208

Harmonies

Analogous

The Analogous color harmony consists of three colors that are next to each other on the color wheel.



14466750



14270645



13747120

Triad

The Triadic color harmony groups three colors that are evenly spaced from another and form a triangle on the color wheel.



14270645



11586497



12829656

Complementary

The Complementary color scheme is a pair of colors which are on the opposite of each other on the color wheel.



14270645



11914969

Split Complementary

Split-complementary colors differ from the complementary color scheme. The scheme consists of three colors, the original color and two neighbors of the complement color.



11978713



14270645



11258828

Square

The Square scheme is like the rectangle color scheme, but the four colors are evenly spaced on the color wheel.



14270645



12175800



11389653



13680850

Rectangle

The Rectangle color scheme consists of four colors that form a rectangle on the color wheel.



14270645



13288880



11389653



12567769

Sweetspot

The Sweet Spot groups the original color and five complimentary colors.



14270645



16774898



14267854



8419960



0



8421504

Same Dimension

The Same Dimension uses a secret algorithm to generate beautiful new colors.



14270645



16768204



14275253



7235171



11351296



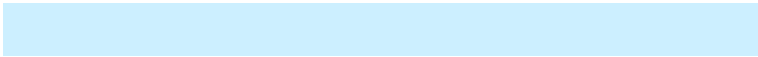
3018240

Inverse Universe

The Inverse Universe completely reimagines the original color for something new.



11914969



13430783



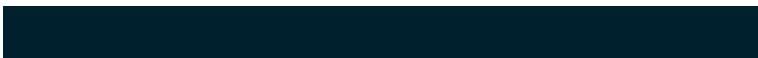
11910361



6515310



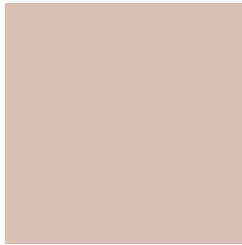
30893



8238

Previews

White Background



This preview shows how the Decimal color 14270645 looks on a white background.

Color Contrast Check

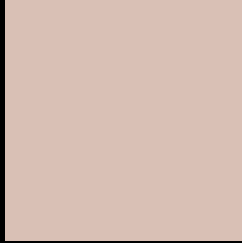
Large Text (above 18pt) WCAG AA × Fail

Any Text WCAG AA × Fail

Large Text (above 18pt) WCAG AAA × Fail

Any Text WCAG AAA × Fail

Black Background



This preview shows how the Decimal color 14270645 looks on a black background.

Color Contrast Check

Large Text (above 18pt) WCAG AA ✓ Pass

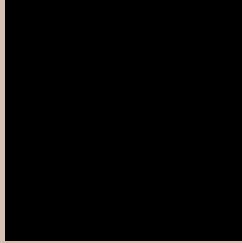
Any Text WCAG AA ✓ Pass

Large Text (above 18pt) WCAG AAA ✓ Pass

Any Text WCAG AAA ✓ Pass

If you want to check with other color combinations, try the [Color Contrast Checker](#).

Decimal 14270645 Background



This preview shows how black text looks on a background with the Decimal color 14270645.




This preview shows how white text looks on a background with the Decimal color 14270645.

Color Blindness Simulation

Color vision deficiency is a very complex topic, and I could not describe the different causes any better than Wikipedia does, so if you want to learn more, you should check out their [article about color blindness](#).

Dichromacy





Tritanopia
14466507

Trichromacy



Original Color
14270645

Protanomaly
13747126

Deuteranomaly
14466997

Tritanomaly
14401219

Monochromacy



Original Color
14270645

Achromatopsia
13027014

Achromatomaly
13485248

CSS Examples

Text

The CSS property to change the color of the text to Decimal 14270645 is called "color". The color property can be set on classes, ids or directly on the HTML element.

This example shows how text in the color #D9C0B5 looks like.

```
.text, #text, p{  
    color:#D9C0B5  
}
```

If you want to add a text shadow in that color use the text-shadow property, you can generate a text shadow directly with our [CSS Text Shadow Generator](#).

Here you see how black text with a 4 pixel #D9C0B5 colored shadow looks like.

```
.shadow{ text-shadow: 4px 4px 2px #D9C0B5
}
```

Border

The CSS property to change the border of an element to Decimal 14270645 is called "border". The border property can be set on classes, ids or directly on the HTML element.

This example shows the color as border, it can be applied via the CSS property "border" or "border-color".

```
.border, #border, table{ border:4px solid
#D9C0B5 }
```

If only the border color should be changed use the property `border-color`.

```
.border{ border-color:#D9C0B5 }
```

If you want to add a box shadow in that color use:

Here you see how a box with a 4 pixel #D9C0B5 colored shadow looks like.

```
.boxshadow{ -moz-box-shadow:4px 4px 4px  
4px #D9C0B5; -webkit-box-shadow:4px 4px  
4px 4px #D9C0B5; box-shadow:4px 4px 4px  
4px #D9C0B5 }
```

Background

The CSS property to change the background color of an element to Decimal 14270645 is called "background". The background property can be set on classes, ids or directly on the HTML element.

```
.background, #background, body{  
background:#D9C0B5 }
```

If only the background color should be changed can be used:

```
.background{ background-color:#D9C0B5 }
```

This example shows the color as background, it is applied via the CSS property "background".

To optimize and compress your CSS code, you can use our [online CSS compressor and optimizer](#) based on csstidy. If you want to create a linear or radial gradient as background or border, check our [CSS Gradient Generator](#).

Hey! You found this booklet interesting? Support Converting Colors with the new Membership Option!

The pro membership hides all ads, plus gives you double the colors in the color bucket, and more awesome pro features!

[Learn more, Memberships starting at \\$2.50/m!](#)

**Follow me
on Twitter!**

@ConvertingColor