

Converting Colors

Decimal(14270657)

Have a look what the booklet for
Decimal(14270657) contains.

Decimal(14270657)	3
<i>Conversions</i>	4
<i>Details</i>	6
<i>Harmonies</i>	11
<i>Previews</i>	23
<i>Color Blindness Simulation</i>	26
<i>CSS Examples</i>	29

Color

Decimal(14270657)

Conversions

Conversions Part 1

Format	Color
Hex	D9C0C1
RGB	217, 192, 193
RGB Percent	85%, 75%, 76%
CMY	0.1490, 0.2471, 0.2431
CMYK	0.00, 0.12, 0.11, 0.15
HSL	358°, 25%, 80%
HSV	358°, 12%, 85%
XYZ	57.0905, 56.3012, 58.3103
YIQ	199.5890, 14.5790, 5.6110

Conversions

Conversions Part 2

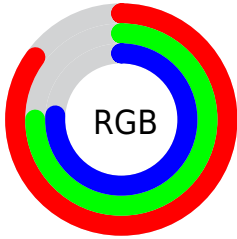
Format	Color
R _Y B	217, 192, 193
Decimal	14270657
CIE Lab	79.78, 9.00, 2.73
CIE LCh	80, 9.409, 16.879
Yxy	56.3012, 0.3325, 0.3279
Android (android.graphics.Color)	4292460737 (0xFFD9C0C1)
YUV	199.5890, -3.2484, 15.2694
Hunter-Lab	75.0342, 4.5039, 6.4486

Details

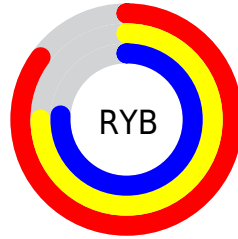
The Decimal color **14270657** is a light color, and the websafe version is hex **CCCCCC**. A complement of this color would be **12638680**, and the grayscale version is **13158600**.

A 20% lighter version of the original color is **16775417**, and **10652556** is the 20% darker color. If you saturate the color by 10%, you get **14265004**, and if you desaturate by 10%, it is **14276310**.

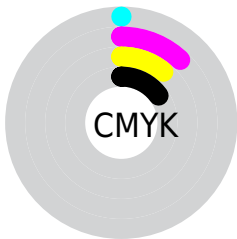
Distribution



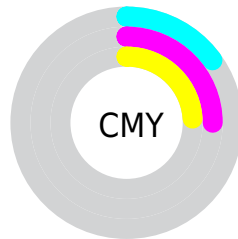
- Red (85%)
- Green (75%)
- Blue (76%)



- Red (85%)
- Yellow (75%)
- Blue (76%)



- Cyan (0%)
- Magenta (12%)
- Yellow (11%)
- Black (15%)



- Cyan (15%)
- Magenta (25%)
- Yellow (24%)

Brightness & Saturation Gradients

These gradients show how the Decimal color 14270657 changes by changing the brightness by 10 percent. The first figure shows a shift by +10% for each color and the second figure -10%.

Similar to the brightness gradients but the following saturation gradients show a change of the Decimal color 14270657 by changing the saturation by 10% instead.

■ 14270657

■ 14270657

16777215

■ 12428710

■ 16775417

■ 10652556

■ 8941938

■ 7231834

■ 5652802

■ 4074284

■ 2627096

■ 1245184

■ 0

 14270657

 14270657

 14265004

 14276310

 14259607

 14281707

 14253955

 14286847

 14248302

 14242905

 14237252

 14231599

 14225946

 14221321

Harmonies

Analogous

The Analogous color harmony consists of three colors that are next to each other on the color wheel.



14074058



14270657



14139833

Triad

The Triadic color harmony groups three colors that are evenly spaced from another and form a triangle on the color wheel.



14270657



12503482



12175575

Complementary

The Complementary color scheme is a pair of colors which are on the opposite of each other on the color wheel.



14270657



12638680

Split Complementary

Split-complementary colors differ from the complementary color scheme. The scheme consists of three colors, the original color and two neighbors of the complement color.



11717330



14270657



11914177

Square

The Square scheme is like the rectangle color scheme, but the four colors are evenly spaced on the color wheel.



14270657



13158325



11586506



12830166

Rectangle

The Rectangle color scheme consists of four colors that form a rectangle on the color wheel.



14270657



13943734



11586506



11979222

Sweetspot

The Sweet Spot groups the original color and five complimentary colors.



14270657



16775160



14205145



8419963



0



8421504

Same Dimension

The Same Dimension uses a secret algorithm to generate beautiful new colors.



14270657



16767965



14273472



7234403



11337735



3014658

Inverse Universe

The Inverse Universe completely reimagines the original color for something new.



14270657



16767965



12635865



7234403



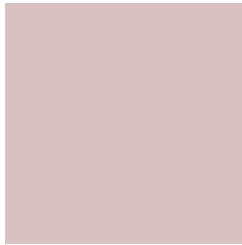
11337735



3014658

Previews

White Background



This preview shows how the Decimal color 14270657 looks on a white background.

Color Contrast Check

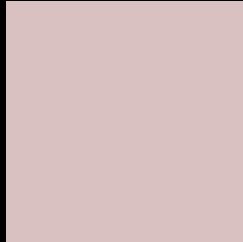
Large Text (above 18pt) WCAG AA × Fail

Any Text WCAG AA × Fail

Large Text (above 18pt) WCAG AAA × Fail

Any Text WCAG AAA × Fail

Black Background



This preview shows how the Decimal color 14270657 looks on a black background.

Color Contrast Check

Large Text (above 18pt) WCAG AA ✓ Pass

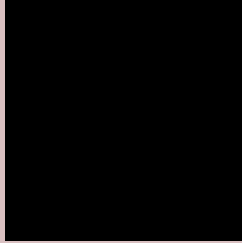
Any Text WCAG AA ✓ Pass

Large Text (above 18pt) WCAG AAA ✓ Pass

Any Text WCAG AAA ✓ Pass

If you want to check with other color combinations, try the [Color Contrast Checker](#).

Decimal 14270657 Background



This preview shows how black text looks on a background with the Decimal color 14270657.



This preview shows how white text looks on a background with the Decimal color 14270657.

Color Blindness Simulation

Color vision deficiency is a very complex topic, and I could not describe the different causes any better than Wikipedia does, so if you want to learn more, you should check out their [article about color blindness](#).

Dichromacy





Tritanopia
14401229

Trichromacy



Original Color
14270657

Protanomaly
13616067

Deuteranomaly
14335937

Tritanomaly
14335945

Monochromacy



Original Color
14270657

Achromatopsia
13158600

Achromatomaly
13551045

CSS Examples

Text

The CSS property to change the color of the text to Decimal 14270657 is called "color". The color property can be set on classes, ids or directly on the HTML element.

This example shows how text in the color #D9C0C1 looks like.

```
.text, #text, p{  
    color:#D9C0C1  
}
```

If you want to add a text shadow in that color use the text-shadow property, you can generate a text shadow directly with our [CSS Text Shadow Generator](#).

Here you see how black text with a 4 pixel #D9C0C1 colored shadow looks like.

```
.shadow{ text-shadow: 4px 4px 2px #D9C0C1
}
```

Border

The CSS property to change the border of an element to Decimal 14270657 is called "border". The border property can be set on classes, ids or directly on the HTML element.

This example shows the color as border, it can be applied via the CSS property "border" or "border-color".

```
.border, #border, table{ border:4px solid
#D9C0C1 }
```

If only the border color should be changed use the property `border-color`.

```
.border{ border-color:#D9C0C1 }
```

If you want to add a box shadow in that color use:

Here you see how a box with a 4 pixel #D9C0C1 colored shadow looks like.

```
.boxshadow{ -moz-box-shadow:4px 4px 4px  
4px #D9C0C1; -webkit-box-shadow:4px 4px  
4px 4px #D9C0C1; box-shadow:4px 4px 4px  
4px #D9C0C1 }
```

Background

The CSS property to change the background color of an element to Decimal 14270657 is called "background". The background property can be set on classes, ids or directly on the HTML element.

```
.background, #background, body{  
background:#D9C0C1 }
```

If only the background color should be changed can be used:

```
.background{ background-color:#D9C0C1 }
```

This example shows the color as background, it is applied via the CSS property "background".

To optimize and compress your CSS code, you can use our [online CSS compressor and optimizer](#) based on csstidy. If you want to create a linear or radial gradient as background or border, check our [CSS Gradient Generator](#).

Hey! You found this booklet interesting? Support Converting Colors with the new Membership Option!

The pro membership hides all ads, plus gives you double the colors in the color bucket, and more awesome pro features!

[Learn more, Memberships starting at \\$2.50/m!](#)

**Follow me
on Twitter!**

@ConvertingColor