

# Converting Colors

Decimal(14270659)

Have a look what the booklet for  
Decimal(14270659) contains.

<b>Decimal(14270659)</b> .....	3
<i><b>Conversions</b></i> .....	4
<i><b>Details</b></i> .....	6
<i><b>Harmonies</b></i> .....	11
<i><b>Previews</b></i> .....	23
<i><b>Color Blindness Simulation</b></i> .....	26
<i><b>CSS Examples</b></i> .....	29

# **Color**

**Decimal(14270659)**

# Conversions

## Conversions Part 1

Format	Color
Hex	D9C0C3
RGB	217, 192, 195
RGB Percent	85%, 75%, 76%
CMY	0.1490, 0.2471, 0.2353
CMYK	0.00, 0.12, 0.10, 0.15
HSL	353°, 25%, 80%
HSV	353°, 12%, 85%
XYZ	57.3152, 56.3911, 59.4935
YIQ	199.8170, 13.9370, 6.2330

# Conversions

## Conversions Part 2

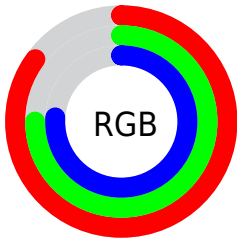
Format	Color
R <sub>Y</sub> B	217, 192, 195
Decimal	14270659
CIE Lab	79.84, 9.34, 1.73
CIE LCh	80, 9.496, 10.488
Yxy	56.3911, 0.3309, 0.3256
Android (android.graphics.Color)	4292460739 (0xFFD9C0C3)
YUV	199.8170, -2.3748, 15.0695
Hunter-Lab	75.0940, 4.8249, 5.5931

# Details

The Decimal color **14270659** is a light color, and the websafe version is hex **CCCCCC**. A complement of this color would be **12638678**, and the grayscale version is **13158600**.

A 20% lighter version of the original color is **16775420**, and **10652557** is the 20% darker color. If you saturate the color by 10%, you get **14265008**, and if you desaturate by 10%, it is **14276310**.

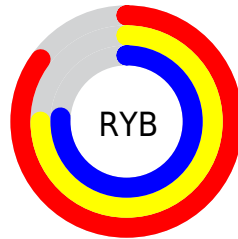
# Distribution



Red (85%)

Green (75%)

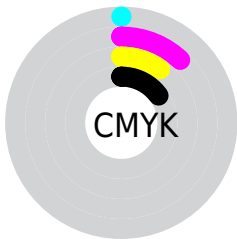
Blue (76%)



Red (85%)

Yellow (75%)

Blue (76%)

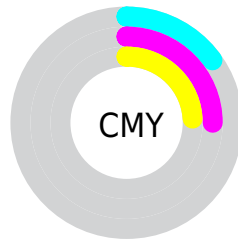


Cyan (0%)

Magenta (12%)

Yellow (10%)

Black (15%)



Cyan (15%)

Magenta (25%)

Yellow (24%)

# Brightness & Saturation Gradients

These gradients show how the Decimal color 14270659 changes by changing the brightness by 10 percent. The first figure shows a shift by +10% for each color and the second figure -10%.

Similar to the brightness gradients but the following saturation gradients show a change of the Decimal color 14270659 by changing the saturation by 10% instead.



 14270659

 14270659

16777215

 12428712

 16775420

 10652557

 8941940

 7231835

 5652804

 4074286

 2627097

 1310720

 0

 14270659

 14270659

 14265008

 14276310

 14259613

 14281705

 14253962

 14286844

 14248311

 14286847

 14242916

 14237264

 14231613

 14225962

 14221338

# Harmonies

## Analogous

The Analogous color harmony consists of three colors that are next to each other on the color wheel.



13943244



14270659



14205371

# Triad

The Triadic color harmony groups three colors that are evenly spaced from another and form a triangle on the color wheel.



14270659



12634552



12044502

# Complementary

The Complementary color scheme is a pair of colors which are on the opposite of each other on the color wheel.



14270659



12638678

# Split Complementary

Split-complementary colors differ from the complementary color scheme. The scheme consists of three colors, the original color and two neighbors of the complement color.



11651793



14270659



12045248

# Square

The Square scheme is like the rectangle color scheme, but the four colors are evenly spaced on the color wheel.



14270659



13289141



11652041



12699351

# Rectangle

The Rectangle color scheme consists of four colors that form a rectangle on the color wheel.



14270659



14009015



11652041



11848149



# Sweetspot

The Sweet Spot groups the original color and five complimentary colors.



14270659



16775160



14074073



8419963



0



8421504



# Same Dimension

The Same Dimension uses a secret algorithm to generate beautiful new colors.



14270659



16767968



14272960



7234404



11337749



3014662



# Inverse Universe

The Inverse Universe completely reimagines the original color for something new.



14270659



16767968



12636377



7234404



11337749



3014662



# Previews

## White Background



This preview shows how the Decimal color 14270659 looks on a white background.

## Color Contrast Check

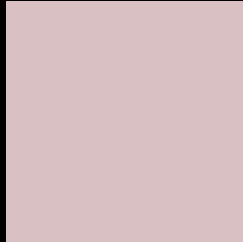
Large Text (above 18pt) WCAG AA × Fail

Any Text WCAG AA × Fail

Large Text (above 18pt) WCAG AAA × Fail

Any Text WCAG AAA × Fail

# Black Background



This preview shows how the Decimal color 14270659 looks on a black background.

## Color Contrast Check

Large Text (above 18pt) WCAG AA ✓ Pass

Any Text WCAG AA ✓ Pass

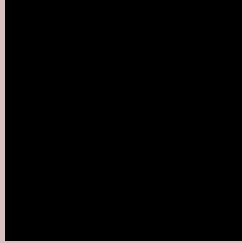
Large Text (above 18pt) WCAG AAA ✓ Pass

Any Text WCAG AAA ✓ Pass

If you want to check with other color combinations, try the [Color Contrast Checker](#).



## Decimal 14270659 Background



This preview shows how black text looks on a background with the Decimal color 14270659.



This preview shows how white text looks on a background with the Decimal color 14270659.

# Color Blindness Simulation

Color vision deficiency is a very complex topic, and I could not describe the different causes any better than Wikipedia does, so if you want to learn more, you should check out their [article about color blindness](#).


## Dichromacy



**Original Color**  
14270659

**Protanopia**  
13223366

**Deuteranopia**  
14336195



**Tritanopia**  
14335693

# Trichromacy



**Original Color**  
14270659

**Protanomaly**  
13616069

**Deuteranomaly**  
14336195

**Tritanomaly**  
14335945

# Monochromacy



**Original Color**  
14270659

**Achromatopsia**  
13158600

**Achromatomaly**  
13551046

# CSS Examples

## Text

The CSS property to change the color of the text to Decimal 14270659 is called "color". The color property can be set on classes, ids or directly on the HTML element.

This example shows how text in the color #D9C0C3 looks like.

```
.text, #text, p{  
    color:#D9C0C3  
}
```

If you want to add a text shadow in that color use the text-shadow property, you can generate a text shadow directly with our [CSS Text Shadow Generator](#).

Here you see how black text with a 4 pixel #D9C0C3 colored shadow looks like.

```
.shadow{ text-shadow: 4px 4px 2px #D9C0C3
}
```

## Border

The CSS property to change the border of an element to Decimal 14270659 is called "border". The border property can be set on classes, ids or directly on the HTML element.

This example shows the color as border, it can be applied via the CSS property "border" or "border-color".

```
.border, #border, table{ border:4px solid
#D9C0C3 }
```

If only the border color should be changed use the property `border-color`.

```
.border{ border-color:#D9C0C3 }
```

If you want to add a box shadow in that color use:

Here you see how a box with a 4 pixel #D9C0C3 colored shadow looks like.

```
.boxshadow{ -moz-box-shadow:4px 4px 4px  
4px #D9C0C3; -webkit-box-shadow:4px 4px  
4px 4px #D9C0C3; box-shadow:4px 4px 4px  
4px #D9C0C3 }
```

# Background

The CSS property to change the background color of an element to Decimal 14270659 is called "background". The background property can be set on classes, ids or directly on the HTML element.

```
.background, #background, body{  
background:#D9C0C3 }
```

If only the background color should be changed can be used:

```
.background{ background-color:#D9C0C3 }
```

This example shows the color as background, it is applied via the CSS property "background".

To optimize and compress your CSS code, you can use our [online CSS compressor and optimizer](#) based on csstidy. If you want to create a linear or radial gradient as background or border, check our [CSS Gradient Generator](#).



Hey! You found this booklet interesting? Support Converting Colors with the new Membership Option!

The pro membership hides all ads, plus gives you double the colors in the color bucket, and more awesome pro features!

**[Learn more, Memberships starting at \\$2.50/m!](#)**

**Follow me  
on Twitter!**

@ConvertingColor