

Converting Colors

Decimal(14271412)

Have a look what the booklet for
Decimal(14271412) contains.

Decimal(14271412)	3
<i>Conversions</i>	4
<i>Details</i>	6
<i>Harmonies</i>	11
<i>Previews</i>	23
<i>Color Blindness Simulation</i>	26
<i>CSS Examples</i>	29

Color

Decimal(14271412)

Conversions

Conversions Part 1

Format	Color
Hex	D9C3B4
RGB	217, 195, 180
RGB Percent	85%, 76%, 71%
CMY	0.1490, 0.2353, 0.2941
CMYK	0.00, 0.10, 0.17, 0.15
HSL	24°, 33%, 78%
HSV	24°, 17%, 85%
XYZ	56.3686, 57.0772, 51.2261
YIQ	199.8680, 17.9270, -0.0010

Conversions

Conversions Part 2

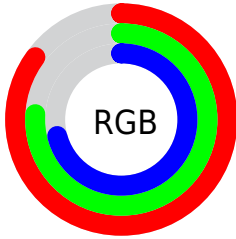
Format	Color
R_{YB}	217, 205, 180
Decimal	14271412
CIE Lab	80.22, 5.33, 10.35
CIE LCh	80, 11.642, 62.754
Yxy	57.0772, 0.3423, 0.3466
Android (android.graphics.Color)	4292461492 (0xFFD9C3B4)
YUV	199.8680, -9.7949, 15.0248
Hunter-Lab	75.5495, 0.9700, 12.6832

Details

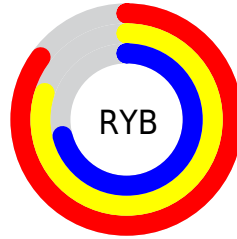
The Decimal color **14271412** is a light color, and the websafe version is hex **CCCCCC**. A complement of this color would be **11848409**, and the grayscale version is **13158600**.

A 20% lighter version of the original color is **16776428**, and **10653055** is the 20% darker color. If you saturate the color by 10%, you get **14268062**, and if you desaturate by 10%, it is **14274762**.

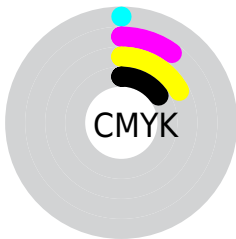
Distribution



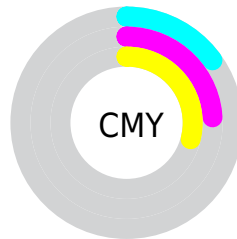
- Red (85%)
- Green (76%)
- Blue (71%)



- Red (85%)
- Yellow (80%)
- Blue (71%)



- Cyan (0%)
- Magenta (10%)
- Yellow (17%)
- Black (15%)



- Cyan (15%)
- Magenta (24%)
- Yellow (29%)

Brightness & Saturation Gradients

These gradients show how the Decimal color 14271412 changes by changing the brightness by 10 percent. The first figure shows a shift by +10% for each color and the second figure -10%.

Similar to the brightness gradients but the following saturation gradients show a change of the Decimal color 14271412 by changing the saturation by 10% instead.

 14271412

 14271412

16777215

 12429465

 16776428

 10653055

 8877158

 7232334

 5588023

 4009506

 2562316

 983040

 0

 14271412

 14271412

 14268062

 14274762

 14264713

 14278111

 14261363

 14281461

 14258013

 14284799

 14254663

 14286847

 14251570

 14248220

 14244870

 14243840

Harmonies

Analogous

The Analogous color harmony consists of three colors that are next to each other on the color wheel.



14598332



14271412



13616817

Triad

The Triadic color harmony groups three colors that are evenly spaced from another and form a triangle on the color wheel.



14271412



11456200



13354201

Complementary

The Complementary color scheme is a pair of colors which are on the opposite of each other on the color wheel.



14271412



11848409

Split Complementary

Split-complementary colors differ from the complementary color scheme. The scheme consists of three colors, the original color and two neighbors of the complement color.



12437724



14271412



11324882

Square

The Square scheme is like the rectangle color scheme, but the four colors are evenly spaced on the color wheel.



14271412



12045501



11652058



14074321

Rectangle

The Rectangle color scheme consists of four colors that form a rectangle on the color wheel.



14271412



13093299



11652058



13026779

Sweetspot

The Sweet Spot groups the original color and five complimentary colors.



14271412



16775154



14267594



8420216



0



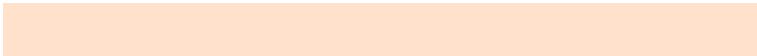
8421504

Same Dimension

The Same Dimension uses a secret algorithm to generate beautiful new colors.



14271412



16769484



14276020



7235427



11355648



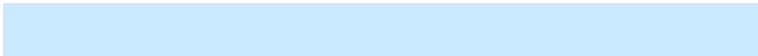
3019520

Inverse Universe

The Inverse Universe completely reimagines the original color for something new.



11848409



13429503



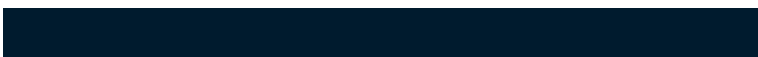
11843801



6515054



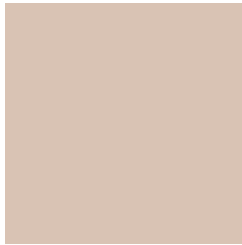
26541



6958

Previews

White Background



This preview shows how the Decimal color 14271412 looks on a white background.

Color Contrast Check

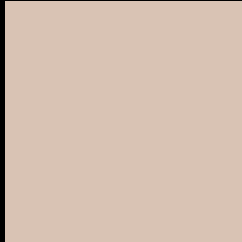
Large Text (above 18pt) WCAG AA × Fail

Any Text WCAG AA × Fail

Large Text (above 18pt) WCAG AAA × Fail

Any Text WCAG AAA × Fail

Black Background



This preview shows how the Decimal color 14271412 looks on a black background.

Color Contrast Check

Large Text (above 18pt) WCAG AA ✓ Pass

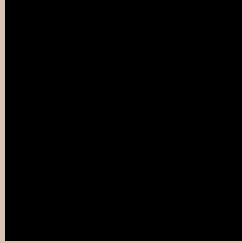
Any Text WCAG AA ✓ Pass

Large Text (above 18pt) WCAG AAA ✓ Pass

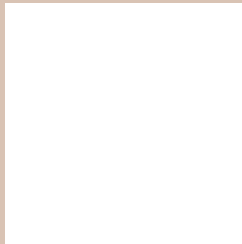
Any Text WCAG AAA ✓ Pass

If you want to check with other color combinations, try the [Color Contrast Checker](#).

Decimal 14271412 Background



This preview shows how black text looks on a background with the Decimal color 14271412.



This preview shows how white text looks on a background with the Decimal color 14271412.

Color Blindness Simulation

Color vision deficiency is a very complex topic, and I could not describe the different causes any better than Wikipedia does, so if you want to learn more, you should check out their [article about color blindness](#).

Dichromacy





Tritanopia
14467022

Trichromacy



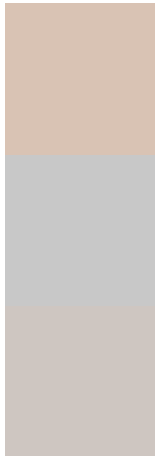
Original Color
14271412

Protanomaly
13878709

Deuteranomaly
14598581

Tritanomaly
14401733

Monochromacy



Original Color
14271412

Achromatopsia
13158600

Achromatomaly
13551297

CSS Examples

Text

The CSS property to change the color of the text to Decimal 14271412 is called "color". The color property can be set on classes, ids or directly on the HTML element.

This example shows how text in the color #D9C3B4 looks like.

```
.text, #text, p{  
    color:#D9C3B4  
}
```

If you want to add a text shadow in that color use the text-shadow property, you can generate a text shadow directly with our [CSS Text Shadow Generator](#).

Here you see how black text with a 4 pixel #D9C3B4 colored shadow looks like.

```
.shadow{ text-shadow: 4px 4px 2px #D9C3B4
}
```

Border

The CSS property to change the border of an element to Decimal 14271412 is called "border". The border property can be set on classes, ids or directly on the HTML element.

This example shows the color as border, it can be applied via the CSS property "border" or "border-color".

```
.border, #border, table{ border:4px solid
#D9C3B4 }
```

If only the border color should be changed use the property `border-color`.

```
.border{ border-color:#D9C3B4 }
```

If you want to add a box shadow in that color use:

Here you see how a box with a 4 pixel #D9C3B4 colored shadow looks like.

```
.boxshadow{ -moz-box-shadow:4px 4px 4px  
4px #D9C3B4; -webkit-box-shadow:4px 4px  
4px 4px #D9C3B4; box-shadow:4px 4px 4px  
4px #D9C3B4 }
```

Background

The CSS property to change the background color of an element to Decimal 14271412 is called "background". The background property can be set on classes, ids or directly on the HTML element.

```
.background, #background, body{  
background:#D9C3B4 }
```

If only the background color should be changed can be used:

```
.background{ background-color:#D9C3B4 }
```

This example shows the color as background, it is applied via the CSS property "background".

To optimize and compress your CSS code, you can use our [online CSS compressor and optimizer](#) based on csstidy. If you want to create a linear or radial gradient as background or border, check our [CSS Gradient Generator](#).

Hey! You found this booklet interesting? Support Converting Colors with the new Membership Option!

The pro membership hides all ads, plus gives you double the colors in the color bucket, and more awesome pro features!

[Learn more, Memberships starting at \\$2.50/m!](#)

**Follow me
on Twitter!**

@ConvertingColor