

Converting Colors

Decimal(14271423)

Have a look what the booklet for
Decimal(14271423) contains.

Decimal(14271423)	3
<i>Conversions</i>	4
<i>Details</i>	6
<i>Harmonies</i>	11
<i>Previews</i>	23
<i>Color Blindness Simulation</i>	26
<i>CSS Examples</i>	29

Color

Decimal(14271423)

Conversions

Conversions Part 1

Format	Color
Hex	D9C3BF
RGB	217, 195, 191
RGB Percent	85%, 76%, 75%
CMY	0.1490, 0.2353, 0.2510
CMYK	0.00, 0.10, 0.12, 0.15
HSL	9°, 25%, 80%
HSV	9°, 12%, 85%
XYZ	57.5343, 57.5435, 57.3648
YIQ	201.1220, 14.3960, 3.4200

Conversions

Conversions Part 2

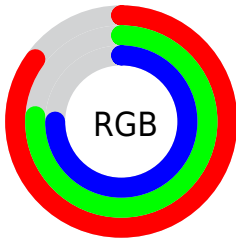
Format	Color
R _Y B	217, 196, 191
Decimal	14271423
CIE Lab	80.48, 7.08, 4.82
CIE LCh	80, 8.565, 34.250
Yxy	57.5435, 0.3336, 0.3337
Android (android.graphics.Color)	4292461503 (0xFFD9C3BF)
YUV	201.1220, -4.9901, 13.9250
Hunter-Lab	75.8574, 2.6334, 8.2640

Details

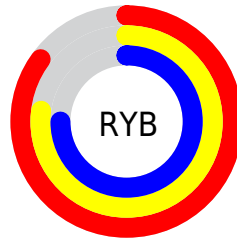
The Decimal color **14271423** is a light color, and the websafe version is hex **CCCCCC**. A complement of this color would be **12572121**, and the grayscale version is **13224393**.

A 20% lighter version of the original color is **16776439**, and **10653066** is the 20% darker color. If you saturate the color by 10%, you get **14266793**, and if you desaturate by 10%, it is **14276053**.

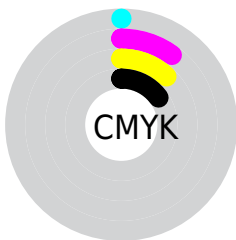
Distribution



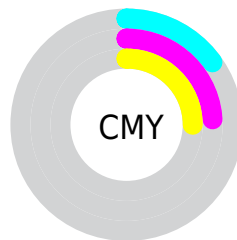
- Red (85%)
- Green (76%)
- Blue (75%)



- Red (85%)
- Yellow (77%)
- Blue (75%)



- Cyan (0%)
- Magenta (10%)
- Yellow (12%)
- Black (15%)



- Cyan (15%)
- Magenta (24%)
- Yellow (25%)

Brightness & Saturation Gradients

These gradients show how the Decimal color 14271423 changes by changing the brightness by 10 percent. The first figure shows a shift by +10% for each color and the second figure -10%.

Similar to the brightness gradients but the following saturation gradients show a change of the Decimal color 14271423 by changing the saturation by 10% instead.

■ 14271423

■ 14271423

16777215

■ 12429476

■ 16776439

■ 10653066

■ 8942704

■ 7232344

■ 5653569

■ 4074795

■ 2627862

■ 1245184

■ 0

 14271423

 14271423

 14266793

 14276053

 14261908

 14280938

 14257278

 14285567

 14252648

 14286847

 14247762

 14243133

 14238247

 14233617

 14229760

Harmonies

Analogous

The Analogous color harmony consists of three colors that are next to each other on the color wheel.



14271175



14271423



14009786

Triad

The Triadic color harmony groups three colors that are evenly spaced from another and form a triangle on the color wheel.



14271423



12307649



12699863

Complementary

The Complementary color scheme is a pair of colors which are on the opposite of each other on the color wheel.



14271423



12572121

Split Complementary

Split-complementary colors differ from the complementary color scheme. The scheme consists of three colors, the original color and two neighbors of the complement color.



12176086



14271423



11914697

Square

The Square scheme is like the rectangle color scheme, but the four colors are evenly spaced on the color wheel.



14271423



12896954



11848912



13354453

Rectangle

The Rectangle color scheme consists of four colors that form a rectangle on the color wheel.



14271423



13682616



11848912



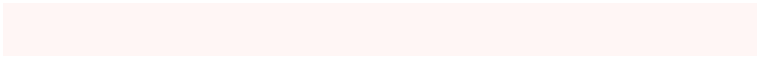
12503511

Sweetspot

The Sweet Spot groups the original color and five complimentary colors.



14271423



16774901



14270421



8419961



0



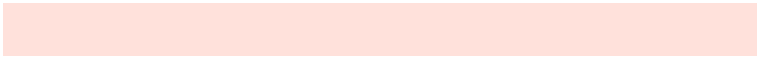
8421504

Same Dimension

The Same Dimension uses a secret algorithm to generate beautiful new colors.



14271423



16769499



14274751



7234659



11344640



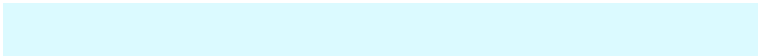
3016448

Inverse Universe

The Inverse Universe completely reimagines the original color for something new.



12572121



14416639



12568793



6515822



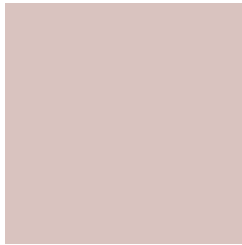
37805



10030

Previews

White Background



This preview shows how the Decimal color 14271423 looks on a white background.

Color Contrast Check

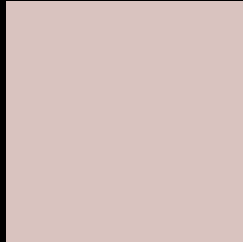
Large Text (above 18pt) WCAG AA × Fail

Any Text WCAG AA × Fail

Large Text (above 18pt) WCAG AAA × Fail

Any Text WCAG AAA × Fail

Black Background



This preview shows how the Decimal color 14271423 looks on a black background.

Color Contrast Check

Large Text (above 18pt) WCAG AA ✓ Pass

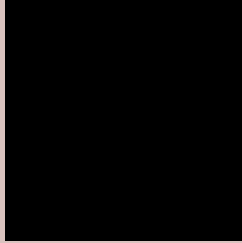
Any Text WCAG AA ✓ Pass

Large Text (above 18pt) WCAG AAA ✓ Pass

Any Text WCAG AAA ✓ Pass

If you want to check with other color combinations, try the [Color Contrast Checker](#).

Decimal 14271423 Background



This preview shows how black text looks on a background with the Decimal color 14271423.



This preview shows how white text looks on a background with the Decimal color 14271423.

Color Blindness Simulation

Color vision deficiency is a very complex topic, and I could not describe the different causes any better than Wikipedia does, so if you want to learn more, you should check out their [article about color blindness](#).

Dichromacy





Tritanopia
14401744

Trichromacy



Original Color
14271423

Protanomaly
13747904

Deuteranomaly
14467775

Tritanomaly
14336458

Monochromacy



Original Color
14271423

Achromatopsia
13224393

Achromatomaly
13617093

CSS Examples

Text

The CSS property to change the color of the text to Decimal 14271423 is called "color". The color property can be set on classes, ids or directly on the HTML element.

This example shows how text in the color #D9C3BF looks like.

```
.text, #text, p{  
  color:#D9C3BF  
}
```

If you want to add a text shadow in that color use the text-shadow property, you can generate a text shadow directly with our [CSS Text Shadow Generator](#).

Here you see how black text with a 4 pixel #D9C3BF colored shadow looks like.

```
.shadow{ text-shadow: 4px 4px 2px #D9C3BF
}
```

Border

The CSS property to change the border of an element to Decimal 14271423 is called "border". The border property can be set on classes, ids or directly on the HTML element.

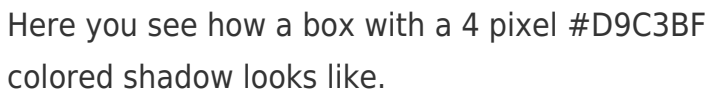
This example shows the color as border, it can be applied via the CSS property "border" or "border-color".

```
.border, #border, table{ border:4px solid
#D9C3BF }
```

If only the border color should be changed use the property `border-color`.

```
.border{ border-color:#D9C3BF }
```

If you want to add a box shadow in that color use:



Here you see how a box with a 4 pixel #D9C3BF colored shadow looks like.

```
.boxshadow{ -moz-box-shadow:4px 4px 4px  
4px #D9C3BF; -webkit-box-shadow:4px 4px  
4px 4px #D9C3BF; box-shadow:4px 4px 4px  
4px #D9C3BF }
```

Background

The CSS property to change the background color of an element to Decimal 14271423 is called "background". The background property can be set on classes, ids or directly on the HTML element.

```
.background, #background, body{  
background:#D9C3BF }
```

If only the background color should be changed can be used:

```
.background{ background-color:#D9C3BF }
```

This example shows the color as background, it is applied via the CSS property "background".

To optimize and compress your CSS code, you can use our [online CSS compressor and optimizer](#) based on csstidy. If you want to create a linear or radial gradient as background or border, check our [CSS Gradient Generator](#).

Hey! You found this booklet interesting? Support Converting Colors with the new Membership Option!

The pro membership hides all ads, plus gives you double the colors in the color bucket, and more awesome pro features!

[Learn more, Memberships starting at \\$2.50/m!](#)

**Follow me
on Twitter!**

@ConvertingColor