

# Converting Colors

Decimal(14271685)

Have a look what the booklet for  
Decimal(14271685) contains.

|  |    |
|--|----|
| <b>Decimal(14271685)</b> .....                 | 3  |
| <i><b>Conversions</b></i> .....                | 4  |
| <i><b>Details</b></i> .....                    | 6  |
| <i><b>Harmonies</b></i> .....                  | 11 |
| <i><b>Previews</b></i> .....                   | 23 |
| <i><b>Color Blindness Simulation</b></i> ..... | 26 |
| <i><b>CSS Examples</b></i> .....               | 29 |

# **Color**

**Decimal(14271685)**

# Conversions

## Conversions Part 1

| Format      | Color                     |
|-------------|---------------------------|
| Hex         | D9C4C5                    |
| RGB         | 217, 196, 197             |
| RGB Percent | 85%, 77%, 77%             |
| CMY         | 0.1490, 0.2314, 0.2275    |
| CMYK        | 0.00, 0.10, 0.09, 0.15    |
| HSL         | 357°, 22%, 81%            |
| HSV         | 357°, 10%, 85%            |
| XYZ         | 58.4332, 58.2628, 60.9894 |
| YIQ         | 202.3930, 12.1950, 4.7630 |

# Conversions

## Conversions Part 2

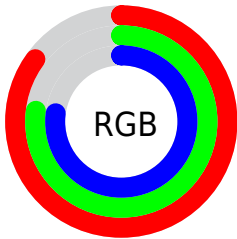
| Format                              | Color                         |
|-------------------------------------|-------------------------------|
| R <sub>Y</sub> B                    | 217, 196, 197                 |
| Decimal                             | 14271685                      |
| CIE Lab                             | 80.88, 7.55, 2.18             |
| CIE LCh                             | 81, 7.853, 16.099             |
| Yxy                                 | 58.2628, 0.3289,<br>0.3279    |
| Android<br>(android.graphics.Color) | 4292461765<br>(0xFFD9C4C5)    |
| YUV                                 | 202.3930, -2.6587,<br>12.8103 |
| Hunter-Lab                          | 76.3301, 3.0702,<br>6.0570    |

# Details

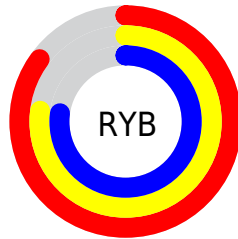
The Decimal color **14271685** is a light color, and the websafe version is hex **CCCCCC**. A complement of this color would be **12900824**, and the grayscale version is **13290186**.

A 20% lighter version of the original color is **16776702**, and **10653327** is the 20% darker color. If you saturate the color by 10%, you get **14266032**, and if you desaturate by 10%, it is **14277338**.

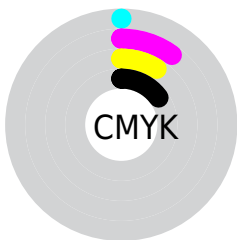
# Distribution



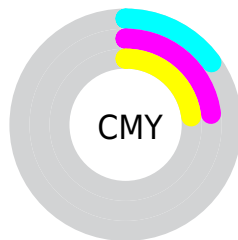
- Red (85%)
- Green (77%)
- Blue (77%)



- Red (85%)
- Yellow (77%)
- Blue (77%)



- Cyan (0%)
- Magenta (10%)
- Yellow (9%)
- Black (15%)



- Cyan (15%)
- Magenta (23%)
- Yellow (23%)

# Brightness & Saturation Gradients

These gradients show how the Decimal color 14271685 changes by changing the brightness by 10 percent. The first figure shows a shift by +10% for each color and the second figure -10%.

Similar to the brightness gradients but the following saturation gradients show a change of the Decimal color 14271685 by changing the saturation by 10% instead.



■ 14271685

■ 14271685

16777215

■ 12429738

■ 16776702

■ 10653327

■ 8942966

■ 7232605

■ 5653830

■ 4075055

■ 2627867

■ 1376256

■ 0

 14271685

 14271685

 14266032

 14277338

 14260636

 14282734

 14254983

 14286847

 14249330

 14243934

 14238281

 14232628

 14226976

 14221579

# Harmonies

## Analogous

The Analogous color harmony consists of three colors that are next to each other on the color wheel.



14075085



14271685



14206398

# Triad

The Triadic color harmony groups three colors that are evenly spaced from another and form a triangle on the color wheel.



14271685



12766398



12503767

# Complementary

The Complementary color scheme is a pair of colors which are on the opposite of each other on the color wheel.



14271685



12900824

# Split Complementary

Split-complementary colors differ from the complementary color scheme. The scheme consists of three colors, the original color and two neighbors of the complement color.



12111059



14271685



12307909

# Square

The Square scheme is like the rectangle color scheme, but the four colors are evenly spaced on the color wheel.



14271685



13355707



12045773



13027543

# Rectangle

The Rectangle color scheme consists of four colors that form a rectangle on the color wheel.



14271685



14010044



12045773



12307414



# Sweetspot

The Sweet Spot groups the original color and five complimentary colors.



14271685



16775160



14206169



8419963



0



8421504

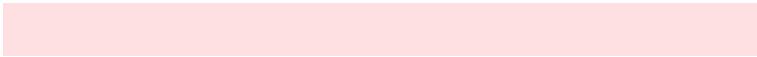


# Same Dimension

The Same Dimension uses a secret algorithm to generate beautiful new colors.



14271685



16769250



14273988



7234403



11337736



3014658



# Inverse Universe

The Inverse Universe completely reimagines the original color for something new.



14271685



16769250



12898521



7234403



11337736

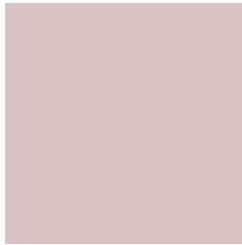


3014658



# Previews

## White Background



This preview shows how the Decimal color 14271685 looks on a white background.

## Color Contrast Check

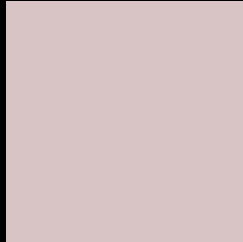
Large Text (above 18pt) WCAG AA × Fail

Any Text WCAG AA × Fail

Large Text (above 18pt) WCAG AAA × Fail

Any Text WCAG AAA × Fail

# Black Background



This preview shows how the Decimal color 14271685 looks on a black background.

## Color Contrast Check

Large Text (above 18pt) WCAG AA ✓ Pass

Any Text WCAG AA ✓ Pass

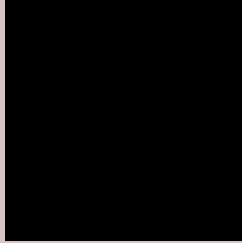
Large Text (above 18pt) WCAG AAA ✓ Pass

Any Text WCAG AAA ✓ Pass

If you want to check with other color combinations, try the [Color Contrast Checker](#).



## Decimal 14271685 Background



This preview shows how black text looks on a background with the Decimal color 14271685.



This preview shows how white text looks on a background with the Decimal color 14271685.

# Color Blindness Simulation

Color vision deficiency is a very complex topic, and I could not describe the different causes any better than Wikipedia does, so if you want to learn more, you should check out their [article about color blindness](#).

## Dichromacy





**Tritanopia**  
14402257

# Trichromacy



**Original Color**  
14271685

**Protanomaly**  
13748166

**Deuteranomaly**  
14468037

**Tritanomaly**  
14336973

# Monochromacy



**Original Color**  
14271685

**Achromatopsia**  
13290186

**Achromatomaly**  
13617352

# CSS Examples

## Text

The CSS property to change the color of the text to Decimal 14271685 is called "color". The color property can be set on classes, ids or directly on the HTML element.

This example shows how text in the color #D9C4C5 looks like.

```
.text, #text, p{  
  color:#D9C4C5  
}
```

If you want to add a text shadow in that color use the text-shadow property, you can generate a text shadow directly with our [CSS Text Shadow Generator](#).

Here you see how black text with a 4 pixel #D9C4C5 colored shadow looks like.

```
.shadow{ text-shadow: 4px 4px 2px #D9C4C5
}
```

## Border

The CSS property to change the border of an element to Decimal 14271685 is called "border". The border property can be set on classes, ids or directly on the HTML element.

This example shows the color as border, it can be applied via the CSS property "border" or "border-color".

```
.border, #border, table{ border:4px solid
#D9C4C5 }
```

If only the border color should be changed use the property `border-color`.

```
.border{ border-color:#D9C4C5 }
```

If you want to add a box shadow in that color use:

Here you see how a box with a 4 pixel #D9C4C5 colored shadow looks like.

```
.boxshadow{ -moz-box-shadow:4px 4px 4px  
4px #D9C4C5; -webkit-box-shadow:4px 4px  
4px 4px #D9C4C5; box-shadow:4px 4px 4px  
4px #D9C4C5 }
```

# Background

The CSS property to change the background color of an element to Decimal 14271685 is called "background". The background property can be set on classes, ids or directly on the HTML element.

```
.background, #background, body{  
background:#D9C4C5 }
```

If only the background color should be changed can be used:

```
.background{ background-color:#D9C4C5 }
```

This example shows the color as background, it is applied via the CSS property "background".

To optimize and compress your CSS code, you can use our [online CSS compressor and optimizer](#) based on csstidy. If you want to create a linear or radial gradient as background or border, check our [CSS Gradient Generator](#).



Hey! You found this booklet interesting? Support Converting Colors with the new Membership Option!

The pro membership hides all ads, plus gives you double the colors in the color bucket, and more awesome pro features!

**[Learn more, Memberships starting at \\$2.50/m!](#)**

**Follow me  
on Twitter!**

@ConvertingColor