

# Converting Colors

Decimal(14272953)

Have a look what the booklet for  
Decimal(14272953) contains.

<b>Decimal(14272953)</b> .....	3
<i><b>Conversions</b></i> .....	4
<i><b>Details</b></i> .....	6
<i><b>Harmonies</b></i> .....	11
<i><b>Previews</b></i> .....	23
<i><b>Color Blindness Simulation</b></i> .....	26
<i><b>CSS Examples</b></i> .....	29

# **Color**

**Decimal(14272953)**

# Conversions

## Conversions Part 1

<b>Format</b>	<b>Color</b>
Hex	D9C9B9
RGB	217, 201, 185
RGB Percent	85%, 79%, 73%
CMY	0.1490, 0.2118, 0.2745
CMYK	0.00, 0.07, 0.15, 0.15
HSL	30°, 30%, 79%
HSV	30°, 15%, 85%
XYZ	58.2589, 60.0278, 54.4149
YIQ	203.9600, 14.6720, -1.5840

# Conversions

## Conversions Part 2

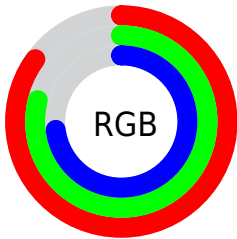
Format	Color
<a href="#">RYB</a>	<a href="#">217, 217, 185</a>
Decimal	<a href="#">14272953</a>
CIELab	<a href="#">81.85, 2.95, 10.00</a>
CIElCh	<a href="#">82, 10.424, 73.578</a>
Yxy	<a href="#">60.0278, 0.3373, 0.3476</a>
Android (android.graphics.Color)	<a href="#">4292463033 (0xFFD9C9B9)</a>
YUV	<a href="#">203.9600, -9.3473, 11.4361</a>
Hunter-Lab	<a href="#">77.4776, -1.3637, 12.5931</a>

# Details

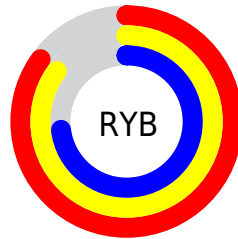
The Decimal color **14272953** is a light color, and the websafe version is hex **CCCCCC**. A complement of this color would be **12175833**, and the grayscale version is **13421772**.

A 20% lighter version of the original color is **16777201**, and **10654596** is the 20% darker color. If you saturate the color by 10%, you get **14270115**, and if you desaturate by 10%, it is **14275791**.

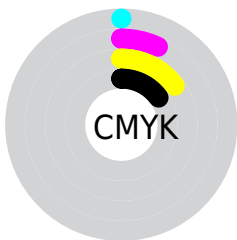
# Distribution



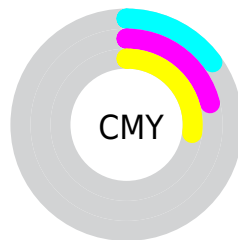
- Red (85%)
- Green (79%)
- Blue (73%)



- Red (85%)
- Yellow (85%)
- Blue (73%)



- Cyan (0%)
- Magenta (7%)
- Yellow (15%)
- Black (15%)



- Cyan (15%)
- Magenta (21%)
- Yellow (27%)

# Brightness & Saturation Gradients

These gradients show how the Decimal color 14272953 changes by changing the brightness by 10 percent. The first figure shows a shift by +10% for each color and the second figure -10%.

Similar to the brightness gradients but the following saturation gradients show a change of the Decimal color 14272953 by changing the saturation by 10% instead.



 14272953

 14272953

16777215

 12431006

 16777201

 10654596

 8943979

 7233875

 5589307

 4076070

 2628881

 1115136

 0

 14272953

 14272953

 14270115

 14275791

 14267278

 14278628

 14264440

 14281466

 14261858

 14284031

 14259021

 14286847

 14256183

 14253345

 14250507

 14249216

# Harmonies

## Analogous

The Analogous color harmony consists of three colors that are next to each other on the color wheel.



14665406



14272953



13618361

# Triad

The Triadic color harmony groups three colors that are evenly spaced from another and form a triangle on the color wheel.



14272953



11850192



13879514

# Complementary

The Complementary color scheme is a pair of colors which are on the opposite of each other on the color wheel.



14272953



12175833

# Split Complementary

Split-complementary colors differ from the complementary color scheme. The scheme consists of three colors, the original color and two neighbors of the complement color.



13093854



14272953



11915481

# Square

The Square scheme is like the rectangle color scheme, but the four colors are evenly spaced on the color wheel.



14272953



12243398



12373726



14468561

# Rectangle

The Rectangle color scheme consists of four colors that form a rectangle on the color wheel.



14272953



13094587



12373726



13617628



# Sweetspot

The Sweet Spot groups the original color and five complimentary colors.



14272953



16775925



14268873



8420473



0



8421504

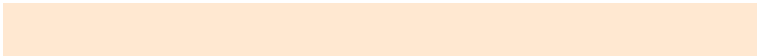


# Same Dimension

The Same Dimension uses a secret algorithm to generate beautiful new colors.



14272953



16771281



14277049



7235683



11360000



3020544

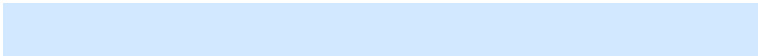


# Inverse Universe

The Inverse Universe completely reimagines the original color for something new.



12175833



13756671



12171737



6514798



22445

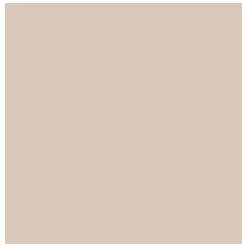


5934



# Previews

## White Background



This preview shows how the Decimal color 14272953 looks on a white background.

## Color Contrast Check

Large Text (above 18pt) WCAG AA × Fail

Any Text WCAG AA × Fail

Large Text (above 18pt) WCAG AAA × Fail

Any Text WCAG AAA × Fail

# Black Background



This preview shows how the Decimal color 14272953 looks on a black background.

## Color Contrast Check

Large Text (above 18pt) WCAG AA ✓ Pass

Any Text WCAG AA ✓ Pass

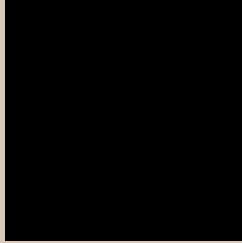
Large Text (above 18pt) WCAG AAA ✓ Pass

Any Text WCAG AAA ✓ Pass

If you want to check with other color combinations, try the [Color Contrast Checker](#).



## Decimal 14272953 Background



This preview shows how black text looks on a background with the Decimal color 14272953.



This preview shows how white text looks on a background with the Decimal color 14272953.

# Color Blindness Simulation

Color vision deficiency is a very complex topic, and I could not describe the different causes any better than Wikipedia does, so if you want to learn more, you should check out their [article about color blindness](#).


## Dichromacy



**Original Color**  
14272953

**Protanopia**  
13880250

**Deuteranopia**  
15123642



**Tritanopia**  
14534100

# Trichromacy



**Original Color**

14272953

**Protanomaly**

14011066

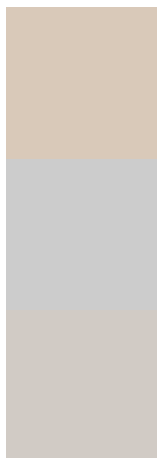
**Deuteranomaly**

14796474

**Tritanomaly**

14468810

# Monochromacy



**Original Color**

14272953

**Achromatopsia**

13421772

**Achromatomaly**

13749189

# CSS Examples

## Text

The CSS property to change the color of the text to Decimal 14272953 is called "color". The color property can be set on classes, ids or directly on the HTML element.

This example shows how text in the color #D9C9B9 looks like.

```
.text, #text, p{  
    color:#D9C9B9  
}
```

If you want to add a text shadow in that color use the text-shadow property, you can generate a text shadow directly with our [CSS Text Shadow Generator](#).

Here you see how black text with a 4 pixel #D9C9B9 colored shadow looks like.

```
.shadow{ text-shadow: 4px 4px 2px #D9C9B9
}
```

## Border

The CSS property to change the border of an element to Decimal 14272953 is called "border". The border property can be set on classes, ids or directly on the HTML element.

This example shows the color as border, it can be applied via the CSS property "border" or "border-color".

```
.border, #border, table{ border:4px solid
#D9C9B9 }
```

If only the border color should be changed use the property `border-color`.

```
.border{ border-color:#D9C9B9 }
```

If you want to add a box shadow in that color use:

Here you see how a box with a 4 pixel #D9C9B9 colored shadow looks like.

```
.boxshadow{ -moz-box-shadow:4px 4px 4px  
4px #D9C9B9; -webkit-box-shadow:4px 4px  
4px 4px #D9C9B9; box-shadow:4px 4px 4px  
4px #D9C9B9 }
```

# Background

The CSS property to change the background color of an element to Decimal 14272953 is called "background". The background property can be set on classes, ids or directly on the HTML element.

```
.background, #background, body{  
background:#D9C9B9 }
```

If only the background color should be changed can be used:

```
.background{ background-color:#D9C9B9 }
```

This example shows the color as background, it is applied via the CSS property "background".

To optimize and compress your CSS code, you can use our [online CSS compressor and optimizer](#) based on csstidy. If you want to create a linear or radial gradient as background or border, check our [CSS Gradient Generator](#).



Hey! You found this booklet interesting? Support Converting Colors with the new Membership Option!

The pro membership hides all ads, plus gives you double the colors in the color bucket, and more awesome pro features!

**[Learn more, Memberships starting at \\$2.50/m!](#)**

**Follow me  
on Twitter!**

@ConvertingColor