

Converting Colors

Decimal(14304887)

Have a look what the booklet for
Decimal(14304887) contains.

Decimal(14304887)	3
<i>Conversions</i>	4
<i>Details</i>	6
<i>Harmonies</i>	11
<i>Previews</i>	23
<i>Color Blindness Simulation</i>	26
<i>CSS Examples</i>	29

Color

Decimal(14304887)

Conversions

Conversions Part 1

Format	Color
Hex	DA4677
RGB	218, 70, 119
RGB Percent	85%, 27%, 47%
CMY	0.1451, 0.7255, 0.5333
CMYK	0.00, 0.68, 0.45, 0.15
HSL	340°, 67%, 56%
HSV	340°, 68%, 85%
XYZ	34.4334, 20.6177, 19.6175
YIQ	119.8380, 72.4790, 46.6150

Conversions

Conversions Part 2

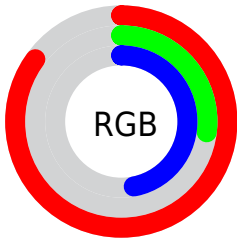
Format	Color
R_{YB}	218, 70, 119
Decimal	14304887
CIE _{Lab}	52.53, 61.06, 5.19
CIE _{LCh}	53, 61.277, 4.861
Yxy	20.6177, 0.4611, 0.2761
Android (android.graphics.Color)	4292494967 (0xFFDA4677)
YUV	119.8380, -0.4131, 86.0881
Hunter-Lab	45.4067, 55.9008, 6.1690

Details

The Decimal color **14304887** is a dark color, and the websafe version is hex **CC3366**. The color can be described as middle muted rose. A complement of this color would be **4643497**, and the grayscale version is **7895160**.

A 20% lighter version of the original color is **16744363**, and **10354759** is the 20% darker color. If you saturate the color by 10%, you get **14299240**, and if you desaturate by 10%, it is **14310534**.

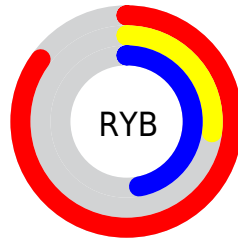
Distribution



Red (85%)

Green (27%)

Blue (47%)



Red (85%)

Yellow (27%)

Blue (47%)

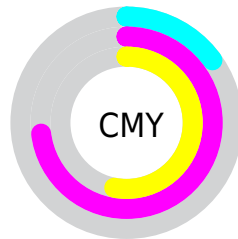


Cyan (0%)

Magenta (68%)

Yellow (45%)

Black (15%)



Cyan (15%)

Magenta (73%)

Yellow (53%)

Brightness & Saturation Gradients

These gradients show how the Decimal color 14304887 changes by changing the brightness by 10 percent. The first figure shows a shift by +10% for each color and the second figure -10%.

Similar to the brightness gradients but the following saturation gradients show a change of the Decimal color 14304887 by changing the saturation by 10% instead.

 14304887

 14304887

16777215

 12330590

 16744363

 10354759

 16751814

 8388657

 16759010

 6488092

 16766463

 4718594

 16774143

 2752513

 0

 14304887

 14304887

 14299240

 14310534

 14293594

 14316180

 14288203

 14321571

 14286920

 14327217

 14332864

 14338510

 14344157

 14349548

 14352378

Harmonies

Analogous

The Analogous color harmony consists of three colors that are next to each other on the color wheel.



12800939



14304887



13914948

Triad

The Triadic color harmony groups three colors that are evenly spaced from another and form a triangle on the color wheel.



14304887



5802778



36572

Complementary

The Complementary color scheme is a pair of colors which are on the opposite of each other on the color wheel.



14304887



4643497

Split Complementary

Split-complementary colors differ from the complementary color scheme. The scheme consists of three colors, the original color and two neighbors of the complement color.



38328



14304887



37454

Square

The Square scheme is like the rectangle color scheme, but the four colors are evenly spaced on the color wheel.



14304887



9338368



38277



33255

Rectangle

The Rectangle color scheme consists of four colors that form a rectangle on the color wheel.



14304887



12870181



38277



37331

Sweetspot

The Sweet Spot groups the original color and five complimentary colors.



14304887



16764125



11093722



8413547



0



8421504

Same Dimension

The Same Dimension uses a secret algorithm to generate beautiful new colors.



14304887



16724085



14311238



7234406



11337785



3014671

Inverse Universe

The Inverse Universe completely reimagines the original color for something new.



14304887



16724085



4637146



7234406



11337785



3014671

Previews

White Background



This preview shows how the Decimal color 14304887 looks on a white background.

Color Contrast Check

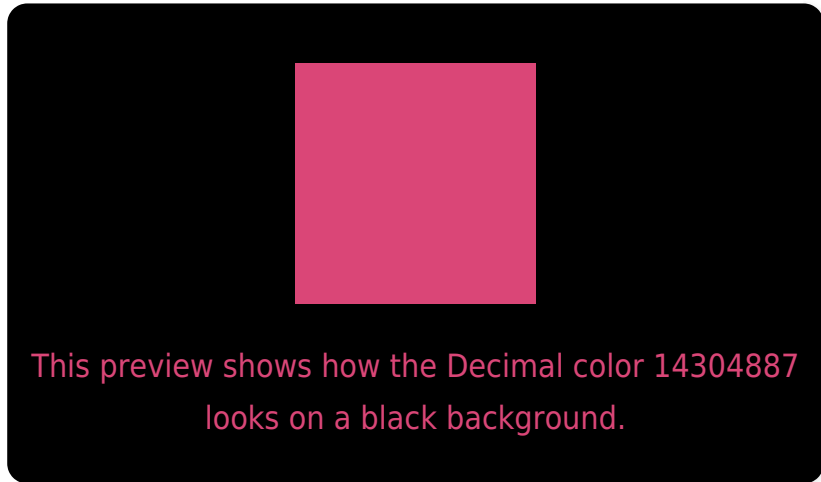
Large Text (above 18pt) WCAG AA ✓ Pass

Any Text WCAG AA × Fail

Large Text (above 18pt) WCAG AAA × Fail

Any Text WCAG AAA × Fail

Black Background



Color Contrast Check

Large Text (above 18pt) WCAG AA ✓ Pass

Any Text WCAG AA ✓ Pass

Large Text (above 18pt) WCAG AAA ✓ Pass

Any Text WCAG AAA × Fail

If you want to check with other color combinations, try the [Color Contrast Checker](#).

Decimal 14304887 Background



This preview shows how black text looks on a background with the Decimal color 14304887.



This preview shows how white text looks on a background with the Decimal color 14304887.

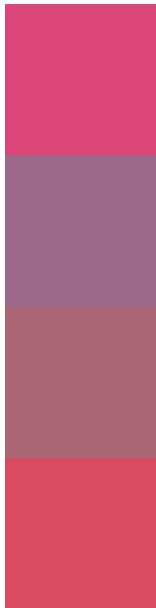
Color Blindness Simulation

Color vision deficiency is a very complex topic, and I could not describe the different causes any better than Wikipedia does, so if you want to learn more, you should check out their [article about color blindness](#).

Dichromacy



Trichromacy



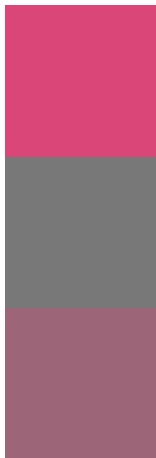
Original Color
14304887

Protanomaly
10250635

Deuteranomaly
11167347

Tritanomaly
14240608

Monochromacy



Original Color
14304887

Achromatopsia
7895160

Achromatomaly
10249848

CSS Examples

Text

The CSS property to change the color of the text to Decimal 14304887 is called "color". The color property can be set on classes, ids or directly on the HTML element.

This example shows how text in the color #DA4677 looks like.

```
.text, #text, p{  
    color:#DA4677  
}
```

If you want to add a text shadow in that color use the text-shadow property, you can generate a text shadow directly with our [CSS Text Shadow Generator](#).

Here you see how black text with a 4 pixel #DA4677 colored shadow looks like.

```
.shadow{ text-shadow: 4px 4px 2px #DA4677
}
```

Border

The CSS property to change the border of an element to Decimal 14304887 is called "border". The border property can be set on classes, ids or directly on the HTML element.

This example shows the color as border, it can be applied via the CSS property "border" or "border-color".

```
.border, #border, table{ border:4px solid
#DA4677 }
```

If only the border color should be changed use the property `border-color`.

```
.border{ border-color:#DA4677 }
```

If you want to add a box shadow in that color use:

Here you see how a box with a 4 pixel #DA4677 colored shadow looks like.

```
.boxshadow{ -moz-box-shadow:4px 4px 4px  
4px #DA4677; -webkit-box-shadow:4px 4px  
4px 4px #DA4677; box-shadow:4px 4px 4px  
4px #DA4677 }
```

Background

The CSS property to change the background color of an element to Decimal 14304887 is called "background". The background property can be set on classes, ids or directly on the HTML element.

```
.background, #background, body{  
background:#DA4677 }
```

If only the background color should be changed can be used:

```
.background{ background-color:#DA4677 }
```

This example shows the color as background, it is applied via the CSS property "background".

To optimize and compress your CSS code, you can use our [online CSS compressor and optimizer](#) based on csstidy. If you want to create a linear or radial gradient as background or border, check our [CSS Gradient Generator](#).

Hey! You found this booklet interesting? Support Converting Colors with the new Membership Option!

The pro membership hides all ads, plus gives you double the colors in the color bucket, and more awesome pro features!

[Learn more, Memberships starting at \\$2.50/m!](#)

**Follow me
on Twitter!**

@ConvertingColor