

Converting Colors

Decimal(14312340)

Have a look what the booklet for
Decimal(14312340) contains.

Decimal(14312340)	3
<i>Conversions</i>	4
<i>Details</i>	6
<i>Harmonies</i>	11
<i>Previews</i>	23
<i>Color Blindness Simulation</i>	26
<i>CSS Examples</i>	29

Color

Decimal(14312340)

Conversions

Conversions Part 1

Format	Color
Hex	DA6394
RGB	218, 99, 148
RGB Percent	85%, 39%, 58%
CMY	0.1451, 0.6118, 0.4196
CMYK	0.00, 0.55, 0.32, 0.15
HSL	335°, 62%, 62%
HSV	335°, 55%, 85%
XYZ	38.7206, 25.9672, 30.9883
YIQ	140.1670, 55.1950, 40.4670

Conversions

Conversions Part 2

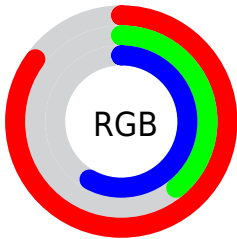
Format	Color
R _Y B	218, 99, 148
Decimal	14312340
CIE Lab	58.01, 51.67, -3.96
CIE LCh	58, 51.817, 355.618
Yxy	25.9672, 0.4047, 0.2714
Android (android.graphics.Color)	4292502420 (0xFFDA6394)
YUV	140.1670, 3.8617, 68.2595
Hunter-Lab	50.9580, 46.4570, -0.3845

Details

The Decimal color **14312340** is a light color, and the websafe version is hex **CC6699**. A complement of this color would be **6544041**, and the grayscale version is **9211020**.

A 20% lighter version of the original color is **16751306**, and **10497121** is the 20% darker color. If you saturate the color by 10%, you get **14306695**, and if you desaturate by 10%, it is **14317985**.

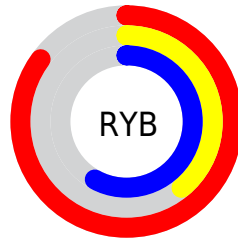
Distribution



Red (85%)

Green (39%)

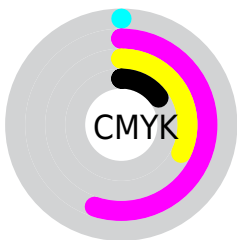
Blue (58%)



Red (85%)

Yellow (39%)

Blue (58%)

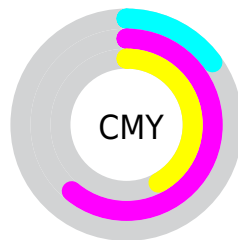


Cyan (0%)

Magenta (55%)

Yellow (32%)

Black (15%)



Cyan (15%)

Magenta (61%)

Yellow (42%)

Brightness & Saturation Gradients

These gradients show how the Decimal color 14312340 changes by changing the brightness by 10 percent. The first figure shows a shift by +10% for each color and the second figure -10%.

Similar to the brightness gradients but the following saturation gradients show a change of the Decimal color 14312340 by changing the saturation by 10% instead.

 14312340

 14312340

16777215

 12404858

 16751306

 10497121

 16758502

 8586826

 16765695

 6750259

 16773119

 4980766

 3407875

 0

 14312340

 14312340

 14306695

 14317985

■ 14301050

■ 14323630

■ 14295662

■ 14329018

■ 14290017

■ 14334663

■ 14286938

■ 14340308

■ 14345953

■ 14351598

■ 14352379

■ 14352383

Harmonies

Analogous

The Analogous color harmony consists of three colors that are next to each other on the color wheel.



12349375



14312340



14575207

Triad

The Triadic color harmony groups three colors that are evenly spaced from another and form a triangle on the color wheel.



14312340



8295476



40405

Complementary

The Complementary color scheme is a pair of colors which are on the opposite of each other on the color wheel.



14312340



6544041

Split Complementary

Split-complementary colors differ from the complementary color scheme. The scheme consists of three colors, the original color and two neighbors of the complement color.



41393



14312340



4431190

Square

The Square scheme is like the rectangle color scheme, but the four colors are evenly spaced on the color wheel.



14312340



11175723



41347



37606

Rectangle

The Rectangle color scheme consists of four colors that form a rectangle on the color wheel.



14312340



13922380



41347



40907

Sweetspot

The Sweet Spot groups the original color and five complimentary colors.



14312340



16766695



11035610



8415089



0



8421504

Same Dimension

The Same Dimension uses a secret algorithm to generate beautiful new colors.



14312340



16734108



14314851



7234407



11337799



3014675

Inverse Universe

The Inverse Universe completely reimagines the original color for something new.



14312340



16734108



6541530



7234407



11337799



3014675

Previews

White Background



This preview shows how the Decimal color 14312340 looks on a white background.

Color Contrast Check

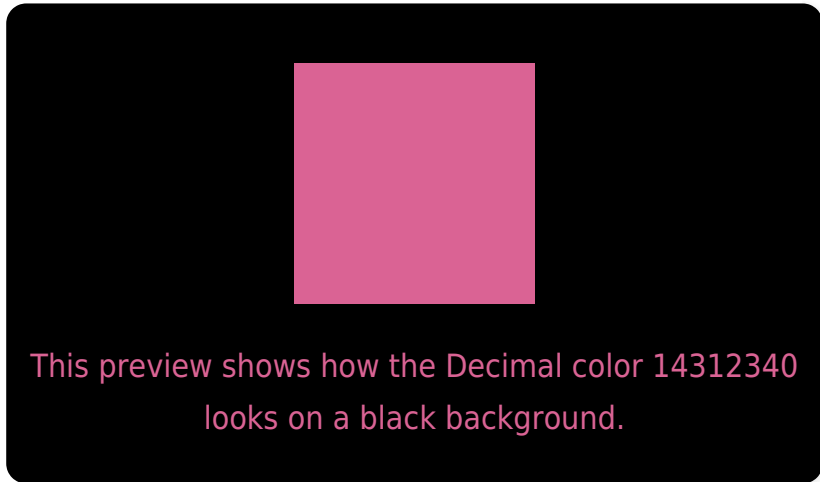
Large Text (above 18pt) WCAG AA ✓ Pass

Any Text WCAG AA ✗ Fail

Large Text (above 18pt) WCAG AAA ✗ Fail

Any Text WCAG AAA ✗ Fail

Black Background



Color Contrast Check

Large Text (above 18pt) WCAG AA ✓ Pass

Any Text WCAG AA ✓ Pass

Large Text (above 18pt) WCAG AAA ✓ Pass

Any Text WCAG AAA × Fail

If you want to check with other color combinations, try the [Color Contrast Checker](#).

Decimal 14312340 Background



This preview shows how black text looks on a background with the Decimal color 14312340.




This preview shows how white text looks on a background with the Decimal color 14312340.

Color Blindness Simulation

Color vision deficiency is a very complex topic, and I could not describe the different causes any better than Wikipedia does, so if you want to learn more, you should check out their [article about color blindness](#).

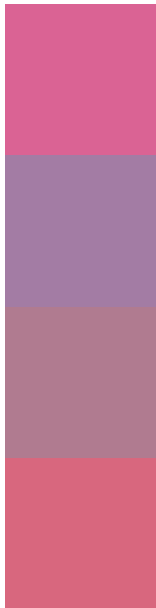
Dichromacy





Tritanopia
14117489

Trichromacy



Original Color
14312340

Protanomaly
10714276

Deuteranomaly
11565968

Tritanomaly
14182270

Monochromacy



Original Color
14312340

Achromatopsia
9211020

Achromatomaly
11042191

CSS Examples

Text

The CSS property to change the color of the text to Decimal 14312340 is called "color". The color property can be set on classes, ids or directly on the HTML element.

This example shows how text in the color #DA6394 looks like.

```
.text, #text, p{  
    color:#DA6394  
}
```

If you want to add a text shadow in that color use the text-shadow property, you can generate a text shadow directly with our [CSS Text Shadow Generator](#).

Here you see how black text with a 4 pixel #DA6394 colored shadow looks like.

```
.shadow{ text-shadow: 4px 4px 2px #DA6394
}
```

Border

The CSS property to change the border of an element to Decimal 14312340 is called "border". The border property can be set on classes, ids or directly on the HTML element.

This example shows the color as border, it can be applied via the CSS property "border" or "border-color".

```
.border, #border, table{ border:4px solid
#DA6394 }
```

If only the border color should be changed use the property `border-color`.

```
.border{ border-color:#DA6394 }
```

If you want to add a box shadow in that color use:

Here you see how a box with a 4 pixel #DA6394 colored shadow looks like.

```
.boxshadow{ -moz-box-shadow:4px 4px 4px  
4px #DA6394; -webkit-box-shadow:4px 4px  
4px 4px #DA6394; box-shadow:4px 4px 4px  
4px #DA6394 }
```

Background

The CSS property to change the background color of an element to Decimal 14312340 is called "background". The background property can be set on classes, ids or directly on the HTML element.

```
.background, #background, body{  
background:#DA6394 }
```

If only the background color should be changed can be used:

```
.background{ background-color:#DA6394 }
```

This example shows the color as background, it is applied via the CSS property "background".

To optimize and compress your CSS code, you can use our [online CSS compressor and optimizer](#) based on csstidy. If you want to create a linear or radial gradient as background or border, check our [CSS Gradient Generator](#).

Hey! You found this booklet interesting? Support Converting Colors with the new Membership Option!

The pro membership hides all ads, plus gives you double the colors in the color bucket, and more awesome pro features!

[Learn more, Memberships starting at \\$2.50/m!](#)

**Follow me
on Twitter!**

@ConvertingColor