

Converting Colors

Decimal(14315655)

Have a look what the booklet for
Decimal(14315655) contains.

Decimal(14315655)	3
<i>Conversions</i>	4
<i>Details</i>	6
<i>Harmonies</i>	11
<i>Previews</i>	23
<i>Color Blindness Simulation</i>	26
<i>CSS Examples</i>	29

Color

Decimal(14315655)

Conversions

Conversions Part 1

Format	Color
Hex	DA7087
RGB	218, 112, 135
RGB Percent	85%, 44%, 53%
CMY	0.1451, 0.5608, 0.4706
CMYK	0.00, 0.49, 0.38, 0.15
HSL	347°, 59%, 65%
HSV	347°, 49%, 85%
XYZ	39.0808, 28.2430, 26.3133
YIQ	146.3160, 55.7930, 29.6250

Conversions

Conversions Part 2

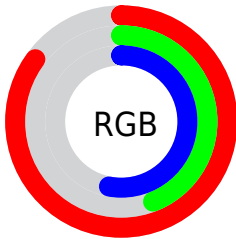
Format	Color
R _Y B	218, 112, 135
Decimal	14315655
CIE Lab	60.11, 43.75, 6.64
CIE LCh	60, 44.253, 8.635
Yxy	28.2430, 0.4174, 0.3016
Android (android.graphics.Color)	4292505735 (0xFFDA7087)
YUV	146.3160, -5.5788, 62.8669
Hunter-Lab	53.1442, 38.2617, 7.8446

Details

The Decimal color **14315655** is a light color, and the websafe version is hex **CC6666**. A complement of this color would be **7396035**, and the grayscale version is **9605778**.

A 20% lighter version of the original color is **16754364**, and **10501206** is the 20% darker color. If you saturate the color by 10%, you get **14310006**, and if you desaturate by 10%, it is **14321304**.

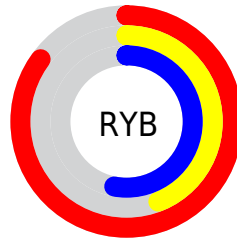
Distribution



Red (85%)

Green (44%)

Blue (53%)



Red (85%)

Yellow (44%)

Blue (53%)

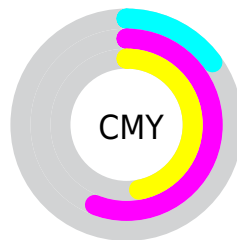


Cyan (0%)

Magenta (49%)

Yellow (38%)

Black (15%)



Cyan (15%)

Magenta (56%)

Yellow (47%)

Brightness & Saturation Gradients

These gradients show how the Decimal color 14315655 changes by changing the brightness by 10 percent. The first figure shows a shift by +10% for each color and the second figure -10%.

Similar to the brightness gradients but the following saturation gradients show a change of the Decimal color 14315655 by changing the saturation by 10% instead.

 14315655

 14315655

16777215

 12408430

 16754364

 10501206

 16761560

 8593726

 16769012

 6815785

 16776447

 4980757

 3473410

 196608

 0

 14315655

 14315655

 14310006

 14321304

 14304357

 14326953

 14298964

 14332346

 14293315

 14337995

 14287666

 14343644

 14286895

 14349293

 14352382

 14352383

Harmonies

Analogous

The Analogous color harmony consists of three colors that are next to each other on the color wheel.



13268398



14315655



13989730

Triad

The Triadic color harmony groups three colors that are evenly spaced from another and form a triangle on the color wheel.



14315655



7576914



40409

Complementary

The Complementary color scheme is a pair of colors which are on the opposite of each other on the color wheel.



14315655



7396035

Split Complementary

Split-complementary colors differ from the complementary color scheme. The scheme consists of three colors, the original color and two neighbors of the complement color.



41920



14315655



3908467

Square

The Square scheme is like the rectangle color scheme, but the four colors are evenly spaced on the color wheel.



14315655



10326593



42395



6590942

Rectangle

The Rectangle color scheme consists of four colors that form a rectangle on the color wheel.



14315655



13140047



42395



40915

Sweetspot

The Sweet Spot groups the original color and five complimentary colors.



14315655



16767457



12677338



8415598



0



8421504

Same Dimension

The Same Dimension uses a secret algorithm to generate beautiful new colors.



14315655



16739211



14322800



7234405



11337766



3014666

Inverse Universe

The Inverse Universe completely reimagines the original color for something new.



14315655



16739211



7388890



7234405



11337766



3014666

Previews

White Background



This preview shows how the Decimal color 14315655 looks on a white background.

Color Contrast Check

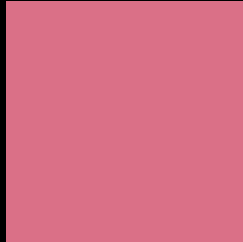
Large Text (above 18pt) WCAG AA ✓ Pass

Any Text WCAG AA ✗ Fail

Large Text (above 18pt) WCAG AAA ✗ Fail

Any Text WCAG AAA ✗ Fail

Black Background



This preview shows how the Decimal color 14315655 looks on a black background.

Color Contrast Check

Large Text (above 18pt) WCAG AA ✓ Pass

Any Text WCAG AA ✓ Pass

Large Text (above 18pt) WCAG AAA ✓ Pass

Any Text WCAG AAA × Fail

If you want to check with other color combinations, try the [Color Contrast Checker](#).

Decimal 14315655 Background



This preview shows how black text looks on a background with the Decimal color 14315655.




This preview shows how white text looks on a background with the Decimal color 14315655.

Color Blindness Simulation

Color vision deficiency is a very complex topic, and I could not describe the different causes any better than Wikipedia does, so if you want to learn more, you should check out their [article about color blindness](#).

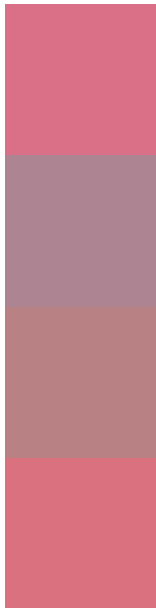
Dichromacy





Tritanopia
14250618

Trichromacy



Original Color
14315655

Protanomaly
11306130

Deuteranomaly
12092036

Tritanomaly
14250367

Monochromacy



Original Color
14315655

Achromatopsia
9605778

Achromatomaly
11306638

CSS Examples

Text

The CSS property to change the color of the text to Decimal 14315655 is called "color". The color property can be set on classes, ids or directly on the HTML element.

This example shows how text in the color #DA7087 looks like.

```
.text, #text, p{  
    color:#DA7087  
}
```

If you want to add a text shadow in that color use the text-shadow property, you can generate a text shadow directly with our [CSS Text Shadow Generator](#).

Here you see how black text with a 4 pixel #DA7087 colored shadow looks like.

```
.shadow{ text-shadow: 4px 4px 2px #DA7087
}
```

Border

The CSS property to change the border of an element to Decimal 14315655 is called "border". The border property can be set on classes, ids or directly on the HTML element.

This example shows the color as border, it can be applied via the CSS property "border" or "border-color".

```
.border, #border, table{ border:4px solid
#DA7087 }
```

If only the border color should be changed use the property `border-color`.

```
.border{ border-color:#DA7087 }
```

If you want to add a box shadow in that color use:

Here you see how a box with a 4 pixel #DA7087 colored shadow looks like.

```
.boxshadow{ -moz-box-shadow:4px 4px 4px  
4px #DA7087; -webkit-box-shadow:4px 4px  
4px 4px #DA7087; box-shadow:4px 4px 4px  
4px #DA7087 }
```

Background

The CSS property to change the background color of an element to Decimal 14315655 is called "background". The background property can be set on classes, ids or directly on the HTML element.

```
.background, #background, body{  
background:#DA7087 }
```

If only the background color should be changed can be used:

```
.background{ background-color:#DA7087 }
```

This example shows the color as background, it is applied via the CSS property "background".

To optimize and compress your CSS code, you can use our [online CSS compressor and optimizer](#) based on csstidy. If you want to create a linear or radial gradient as background or border, check our [CSS Gradient Generator](#).

Hey! You found this booklet interesting? Support Converting Colors with the new Membership Option!

The pro membership hides all ads, plus gives you double the colors in the color bucket, and more awesome pro features!

[Learn more, Memberships starting at \\$2.50/m!](#)

**Follow me
on Twitter!**

@ConvertingColor