

Converting Colors

Decimal(14322857)

Have a look what the booklet for
Decimal(14322857) contains.

Decimal(14322857)	3
<i>Conversions</i>	4
<i>Details</i>	6
<i>Harmonies</i>	11
<i>Previews</i>	23
<i>Color Blindness Simulation</i>	26
<i>CSS Examples</i>	29

Color

Decimal(14322857)

Conversions

Conversions Part 1

Format	Color
Hex	DA8CA9
RGB	218, 140, 169
RGB Percent	85%, 55%, 66%
CMY	0.1451, 0.4510, 0.3373
CMYK	0.00, 0.36, 0.22, 0.15
HSL	338°, 51%, 70%
HSV	338°, 36%, 85%
XYZ	45.4530, 36.5262, 42.1907
YIQ	166.6280, 37.1790, 25.5550

Conversions

Conversions Part 2

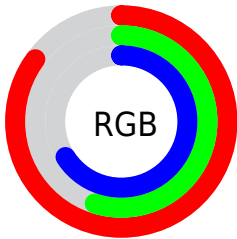
Format	Color
R _Y B	218, 140, 169
Decimal	14322857
CIE Lab	66.92, 33.59, -2.84
CIE LCh	67, 33.707, 355.162
Yxy	36.5262, 0.3661, 0.2942
Android (android.graphics.Color)	4292512937 (0xFFDA8CA9)
YUV	166.6280, 1.1694, 45.0532
Hunter-Lab	60.4369, 28.4805, 0.9157

Details

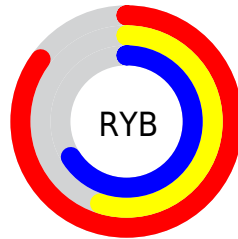
The Decimal color **14322857** is a light color, and the websafe version is hex **FF99CC**. A complement of this color would be **9231037**, and the grayscale version is **10987431**.

A 20% lighter version of the original color is **16761568**, and **10573941** is the 20% darker color. If you saturate the color by 10%, you get **14317211**, and if you desaturate by 10%, it is **14328503**.

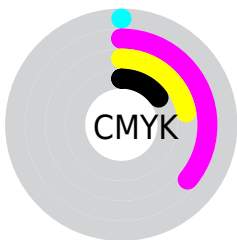
Distribution



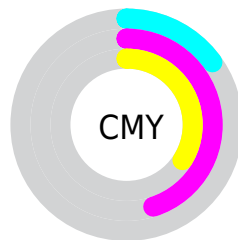
- Red (85%)
- Green (55%)
- Blue (66%)



- Red (85%)
- Yellow (55%)
- Blue (66%)



- Cyan (0%)
- Magenta (36%)
- Yellow (22%)
- Black (15%)



- Cyan (15%)
- Magenta (45%)
- Yellow (34%)

Brightness & Saturation Gradients

These gradients show how the Decimal color 14322857 changes by changing the brightness by 10 percent. The first figure shows a shift by +10% for each color and the second figure -10%.

Similar to the brightness gradients but the following saturation gradients show a change of the Decimal color 14322857 by changing the saturation by 10% instead.

 14322857

 14322857

16777215

 12415631

 16761568

 10573941

 16769021

 8798300

 16776447

 7087941

 5377583

 3735578

 2228225

 0

 14322857

 14322857

 14317211

 14328503

 14311566

 14334148

 14306176

 14339538

 14300530

 14345184

 14294885

 14350829

 14289239

 14352379

 14286929

 14352383

Harmonies

Analogous

The Analogous color harmony consists of three colors that are next to each other on the color wheel.



12948166



14322857



14585227

Triad

The Triadic color harmony groups three colors that are evenly spaced from another and form a triangle on the color wheel.



14322857



10332523



4370388

Complementary

The Complementary color scheme is a pair of colors which are on the opposite of each other on the color wheel.



14322857



9231037

Split Complementary

Split-complementary colors differ from the complementary color scheme. The scheme consists of three colors, the original color and two neighbors of the complement color.



3519420



14322857



8040575

Square

The Square scheme is like the rectangle color scheme, but the four colors are evenly spaced on the color wheel.



14322857



12361574



5551005



7383007

Rectangle

The Rectangle color scheme consists of four colors that form a rectangle on the color wheel.



14322857



14193273



5551005



3649997

Sweetspot

The Sweet Spot groups the original color and five complimentary colors.



14322857



16770029



12356826



8417141



0



8421504

Same Dimension

The Same Dimension uses a secret algorithm to generate beautiful new colors.



14322857



16748986



14325132



7234407



11337792



3014673

Inverse Universe

The Inverse Universe completely reimagines the original color for something new.



14322857



16748986



9228762



7234407



11337792



3014673

Previews

White Background



This preview shows how the Decimal color 14322857 looks on a white background.

Color Contrast Check

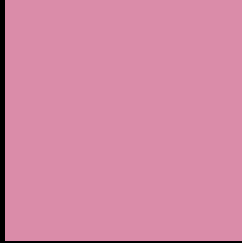
Large Text (above 18pt) WCAG AA × Fail

Any Text WCAG AA × Fail

Large Text (above 18pt) WCAG AAA × Fail

Any Text WCAG AAA × Fail

Black Background



This preview shows how the Decimal color 14322857 looks on a black background.

Color Contrast Check

Large Text (above 18pt) WCAG AA ✓ Pass

Any Text WCAG AA ✓ Pass

Large Text (above 18pt) WCAG AAA ✓ Pass

Any Text WCAG AAA ✓ Pass

If you want to check with other color combinations, try the [Color Contrast Checker](#).

Decimal 14322857 Background



This preview shows how black text looks on a background with the Decimal color 14322857.



This preview shows how white text looks on a background with the Decimal color 14322857.

Color Blindness Simulation

Color vision deficiency is a very complex topic, and I could not describe the different causes any better than Wikipedia does, so if you want to learn more, you should check out their [article about color blindness](#).


Dichromacy



Original Color
14322857

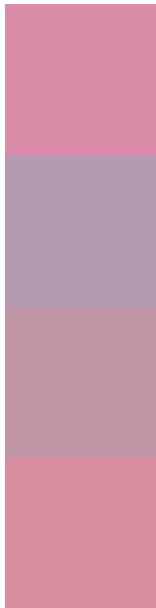
Protanopia
10527415

Deuteranopia
11706022



Tritanopia
14192537

Trichromacy



Original Color
14322857

Protanomaly
11901618

Deuteranomaly
12687271

Tritanomaly
14257823

Monochromacy



Original Color
14322857

Achromatopsia
10987431

Achromatomaly
12230056

CSS Examples

Text

The CSS property to change the color of the text to Decimal 14322857 is called "color". The color property can be set on classes, ids or directly on the HTML element.

This example shows how text in the color #DA8CA9 looks like.

```
.text, #text, p{  
    color:#DA8CA9  
}
```

If you want to add a text shadow in that color use the text-shadow property, you can generate a text shadow directly with our [CSS Text Shadow Generator](#).

Here you see how black text with a 4 pixel #DA8CA9 colored shadow looks like.

```
.shadow{ text-shadow: 4px 4px 2px #DA8CA9
}
```

Border

The CSS property to change the border of an element to Decimal 14322857 is called "border". The border property can be set on classes, ids or directly on the HTML element.

This example shows the color as border, it can be applied via the CSS property "border" or "border-color".

```
.border, #border, table{ border:4px solid
#DA8CA9 }
```

If only the border color should be changed use the property border-color.

```
.border{ border-color:#DA8CA9 }
```

If you want to add a box shadow in that color use:

Here you see how a box with a 4 pixel #DA8CA9 colored shadow looks like.

```
.boxshadow{ -moz-box-shadow:4px 4px 4px  
4px #DA8CA9; -webkit-box-shadow:4px 4px  
4px 4px #DA8CA9; box-shadow:4px 4px 4px  
4px #DA8CA9 }
```

Background

The CSS property to change the background color of an element to Decimal 14322857 is called "background". The background property can be set on classes, ids or directly on the HTML element.

```
.background, #background, body{  
background:#DA8CA9 }
```

If only the background color should be changed can be used:

```
.background{ background-color:#DA8CA9 }
```

This example shows the color as background, it is applied via the CSS property "background".

To optimize and compress your CSS code, you can use our [online CSS compressor and optimizer](#) based on csstidy. If you want to create a linear or radial gradient as background or border, check our [CSS Gradient Generator](#).

Hey! You found this booklet interesting? Support Converting Colors with the new Membership Option!

The pro membership hides all ads, plus gives you double the colors in the color bucket, and more awesome pro features!

[Learn more, Memberships starting at \\$2.50/m!](#)

**Follow me
on Twitter!**

@ConvertingColor