

Converting Colors

Decimal(14327726)

Have a look what the booklet for
Decimal(14327726) contains.

| | |
|--|----|
| Decimal(14327726) | 3 |
| <i>Conversions</i> | 4 |
| <i>Details</i> | 6 |
| <i>Harmonies</i> | 11 |
| <i>Previews</i> | 23 |
| <i>Color Blindness Simulation</i> | 26 |
| <i>CSS Examples</i> | 29 |

Color

Decimal(14327726)

Conversions

Conversions Part 1

| Format | Color |
|-------------|----------------------------|
| Hex | DA9FAE |
| RGB | 218, 159, 174 |
| RGB Percent | 85%, 62%, 68% |
| CMY | 0.1451, 0.3765, 0.3176 |
| CMYK | 0.00, 0.27, 0.20, 0.15 |
| HSL | 345°, 44%, 74% |
| HSV | 345°, 27%, 85% |
| XYZ | 48.9516, 42.7577, 45.7174 |
| YIQ | 178.3510, 30.3490, 17.1730 |

Conversions

Conversions Part 2

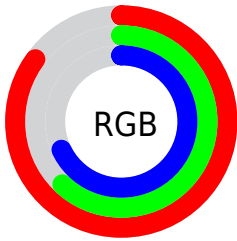
| Format | Color |
|-------------------------------------|-------------------------------|
| R _Y B | 218, 159, 174 |
| Decimal | 14327726 |
| CIE Lab | 71.39, 24.10, 0.91 |
| CIE LCh | 71, 24.121, 2.162 |
| Yxy | 42.7577, 0.3562, 0.3111 |
| Android (android.graphics.Color) | 4292517806 (0xFFDA9FAE) |
| YUV | 178.3510, -2.1450, 34.7722 |
| Hunter-Lab | 65.3894, 19.1967, 4.3195 |

Details

The Decimal color **14327726** is a light color, and the websafe version is hex **CC9999**. A complement of this color would be **10476235**, and the grayscale version is **11711154**.

A 20% lighter version of the original color is **16766693**, and **10644346** is the 20% darker color. If you saturate the color by 10%, you get **14322078**, and if you desaturate by 10%, it is **14333374**.

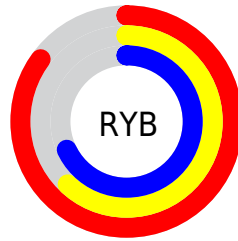
Distribution



Red (85%)

Green (62%)

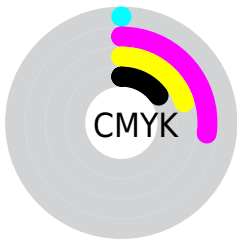
Blue (68%)



Red (85%)

Yellow (62%)

Blue (68%)

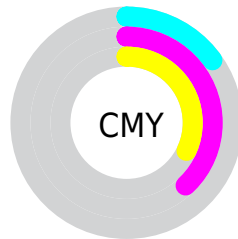


Cyan (0%)

Magenta (27%)

Yellow (20%)

Black (15%)



Cyan (15%)

Magenta (38%)

Yellow (32%)

Brightness & Saturation Gradients

These gradients show how the Decimal color 14327726 changes by changing the brightness by 10 percent. The first figure shows a shift by +10% for each color and the second figure -10%.

Similar to the brightness gradients but the following saturation gradients show a change of the Decimal color 14327726 by changing the saturation by 10% instead.

 14327726

 14327726

16777215

 12486035

 16766693

 10644346

 16774143

 8868449

 7158601

 5514291

 3869982

 2621444

 0

 14327726

 14327726

 14322078

 14333374

 14316429

 14339023

 14311037

 14344415

 14305389

 14350063

 14299741

 14352383

 14294092

 14288444

 14286903

Harmonies

Analogous

The Analogous color harmony consists of three colors that are next to each other on the color wheel.



13476548



14327726



14393752

Triad

The Triadic color harmony groups three colors that are evenly spaced from another and form a triangle on the color wheel.



14327726



10925449



8107989

Complementary

The Complementary color scheme is a pair of colors which are on the opposite of each other on the color wheel.



14327726



10476235

Split Complementary

Split-complementary colors differ from the complementary color scheme. The scheme consists of three colors, the original color and two neighbors of the complement color.



7322309



14327726



9288090

Square

The Square scheme is like the rectangle color scheme, but the four colors are evenly spaced on the color wheel.



14327726



12496515



7912368



9875674

Rectangle

The Rectangle color scheme consists of four colors that form a rectangle on the color wheel.



14327726



14001293



7912368



7715025

Sweetspot

The Sweet Spot groups the original color and five complimentary colors.



14327726



16772080



13279194



8418166



0



8421504

Same Dimension

The Same Dimension uses a secret algorithm to generate beautiful new colors.



14327726



16756162



14331295



7234405



11337772



3014668

Inverse Universe

The Inverse Universe completely reimagines the original color for something new.



14327726



16756162



10472666



7234405



11337772



3014668

Previews

White Background



This preview shows how the Decimal color 14327726 looks on a white background.

Color Contrast Check

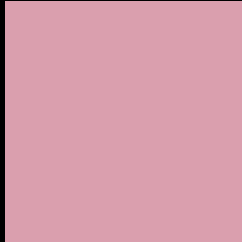
Large Text (above 18pt) WCAG AA × Fail

Any Text WCAG AA × Fail

Large Text (above 18pt) WCAG AAA × Fail

Any Text WCAG AAA × Fail

Black Background



This preview shows how the Decimal color 14327726 looks on a black background.

Color Contrast Check

Large Text (above 18pt) WCAG AA ✓ Pass

Any Text WCAG AA ✓ Pass

Large Text (above 18pt) WCAG AAA ✓ Pass

Any Text WCAG AAA ✓ Pass

If you want to check with other color combinations, try the [Color Contrast Checker](#).

Decimal 14327726 Background



This preview shows how black text looks on a background with the Decimal color 14327726.




This preview shows how white text looks on a background with the Decimal color 14327726.

Color Blindness Simulation

Color vision deficiency is a very complex topic, and I could not describe the different causes any better than Wikipedia does, so if you want to learn more, you should check out their [article about color blindness](#).

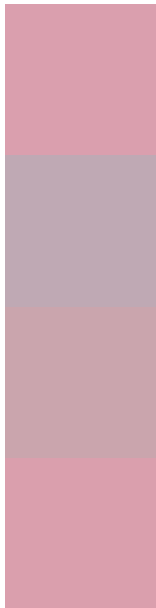
Dichromacy





Tritanopia
14327724

Trichromacy



Original Color
14327726

Protanomaly
12560820

Deuteranomaly
13280685

Tritanomaly
14327725

Monochromacy



Original Color
14327726

Achromatopsia
11711154

Achromatomaly
12692401

CSS Examples

Text

The CSS property to change the color of the text to Decimal 14327726 is called "color". The color property can be set on classes, ids or directly on the HTML element.

This example shows how text in the color #DA9FAE looks like.

```
.text, #text, p{  
    color:#DA9FAE  
}
```

If you want to add a text shadow in that color use the text-shadow property, you can generate a text shadow directly with our [CSS Text Shadow Generator](#).

Here you see how black text with a 4 pixel #DA9FAE colored shadow looks like.

```
.shadow{ text-shadow: 4px 4px 2px #DA9FAE
}
```

Border

The CSS property to change the border of an element to Decimal 14327726 is called "border". The border property can be set on classes, ids or directly on the HTML element.

This example shows the color as border, it can be applied via the CSS property "border" or "border-color".

```
.border, #border, table{ border:4px solid
#DA9FAE }
```

If only the border color should be changed use the property `border-color`.

```
.border{ border-color:#DA9FAE }
```

If you want to add a box shadow in that color use:

Here you see how a box with a 4 pixel #DA9FAE colored shadow looks like.

```
.boxshadow{ -moz-box-shadow:4px 4px 4px  
4px #DA9FAE; -webkit-box-shadow:4px 4px  
4px 4px #DA9FAE; box-shadow:4px 4px 4px  
4px #DA9FAE }
```

Background

The CSS property to change the background color of an element to Decimal 14327726 is called "background". The background property can be set on classes, ids or directly on the HTML element.

```
.background, #background, body{  
background:#DA9FAE }
```

If only the background color should be changed can be used:

```
.background{ background-color:#DA9FAE }
```

This example shows the color as background, it is applied via the CSS property "background".

To optimize and compress your CSS code, you can use our [online CSS compressor and optimizer](#) based on csstidy. If you want to create a linear or radial gradient as background or border, check our [CSS Gradient Generator](#).

Hey! You found this booklet interesting? Support Converting Colors with the new Membership Option!

The pro membership hides all ads, plus gives you double the colors in the color bucket, and more awesome pro features!

[Learn more, Memberships starting at \\$2.50/m!](#)

**Follow me
on Twitter!**

@ConvertingColor