

Converting Colors

Decimal(14328184)

Have a look what the booklet for
Decimal(14328184) contains.

Decimal(14328184)	3
<i>Conversions</i>	4
<i>Details</i>	6
<i>Harmonies</i>	11
<i>Previews</i>	23
<i>Color Blindness Simulation</i>	26
<i>CSS Examples</i>	29

Color

Decimal(14328184)

Conversions

Conversions Part 1

Format	Color
Hex	DAA178
RGB	218, 161, 120
RGB Percent	85%, 63%, 47%
CMY	0.1451, 0.3686, 0.5294
CMYK	0.00, 0.26, 0.45, 0.15
HSL	25°, 57%, 66%
HSV	25°, 45%, 85%
XYZ	45.0485, 41.7512, 23.4538
YIQ	173.3690, 47.1330, -0.6670

Conversions

Conversions Part 2

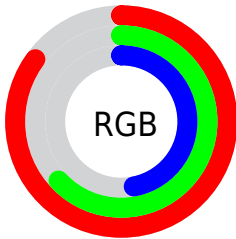
Format	Color
R_{YB}	218, 190, 120
Decimal	14328184
CIE Lab	70.70, 16.13, 29.59
CIE LCh	71, 33.705, 61.399
Yxy	41.7512, 0.4086, 0.3787
Android (android.graphics.Color)	4292518264 (0xFFDAA178)
YUV	173.3690, -26.3109, 39.1414
Hunter-Lab	64.6152, 11.3702, 23.7098

Details

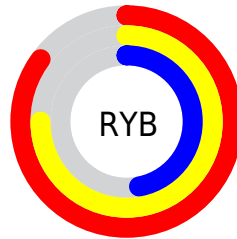
The Decimal color **14328184** is a light color, and the websafe version is hex **CC9966**. A complement of this color would be **7909850**, and the grayscale version is **11447982**.

A 20% lighter version of the original color is **16767149**, and **10579271** is the 20% darker color. If you saturate the color by 10%, you get **14324834**, and if you desaturate by 10%, it is **14331534**.

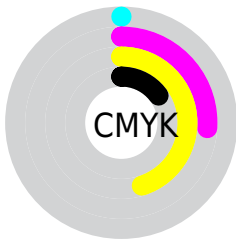
Distribution



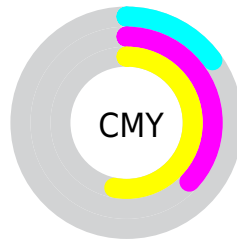
- Red (85%)
- Green (63%)
- Blue (47%)



- Red (85%)
- Yellow (75%)
- Blue (47%)



- Cyan (0%)
- Magenta (26%)
- Yellow (45%)
- Black (15%)



- Cyan (15%)
- Magenta (37%)
- Yellow (53%)

Brightness & Saturation Gradients

These gradients show how the Decimal color 14328184 changes by changing the brightness by 10 percent. The first figure shows a shift by +10% for each color and the second figure -10%.

Similar to the brightness gradients but the following saturation gradients show a change of the Decimal color 14328184 by changing the saturation by 10% instead.

 14328184

 14328184

16777215

 12420959

 16767149

 10579271

 16774344

 8738096

 16777188

 6962458

 5252865

 3543552

 2031616

 0

 14328184

 14328184

 14324834

 14331534

 14321740

 14334628

 14318391

 14337977

 14315041

 14341327

 14311947

 14344421

 14310144

 14347771

 14351103

 14352383

Harmonies

Analogous

The Analogous color harmony consists of three colors that are next to each other on the color wheel.



15243407



14328184



12692591

Triad

The Triadic color harmony groups three colors that are evenly spaced from another and form a triangle on the color wheel.



14328184



5750445



11773409

Complementary

The Complementary color scheme is a pair of colors which are on the opposite of each other on the color wheel.



14328184



7909850

Split Complementary

Split-complementary colors differ from the complementary color scheme. The scheme consists of three colors, the original color and two neighbors of the complement color.



8761322



14328184



4308428

Square

The Square scheme is like the rectangle color scheme, but the four colors are evenly spaced on the color wheel.



14328184



8174479



5748962



13999051

Rectangle

The Rectangle color scheme consists of four colors that form a rectangle on the color wheel.



14328184



11252339



5748962



10856678

Sweetspot

The Sweet Spot groups the original color and five complimentary colors.



14328184



16772318



14317745



8418411



0



8421504

Same Dimension

The Same Dimension uses a secret algorithm to generate beautiful new colors.



14328184



16756597



14340728



7235427



11356416



3019520

Inverse Universe

The Inverse Universe completely reimagines the original color for something new.



7909850



7718399



7897306



6515054



26029



6958

Previews

White Background



This preview shows how the Decimal color 14328184 looks on a white background.

Color Contrast Check

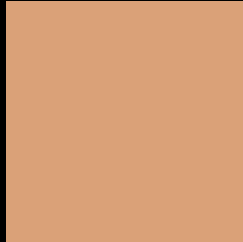
Large Text (above 18pt) WCAG AA × Fail

Any Text WCAG AA × Fail

Large Text (above 18pt) WCAG AAA × Fail

Any Text WCAG AAA × Fail

Black Background



This preview shows how the Decimal color 14328184 looks on a black background.

Color Contrast Check

Large Text (above 18pt) WCAG AA ✓ Pass

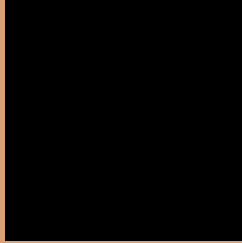
Any Text WCAG AA ✓ Pass

Large Text (above 18pt) WCAG AAA ✓ Pass

Any Text WCAG AAA ✓ Pass

If you want to check with other color combinations, try the [Color Contrast Checker](#).

Decimal 14328184 Background



This preview shows how black text looks on a background with the Decimal color 14328184.

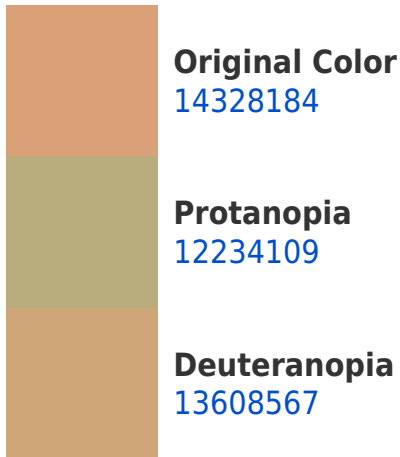



This preview shows how white text looks on a background with the Decimal color 14328184.

Color Blindness Simulation

Color vision deficiency is a very complex topic, and I could not describe the different causes any better than Wikipedia does, so if you want to learn more, you should check out their [article about color blindness](#).

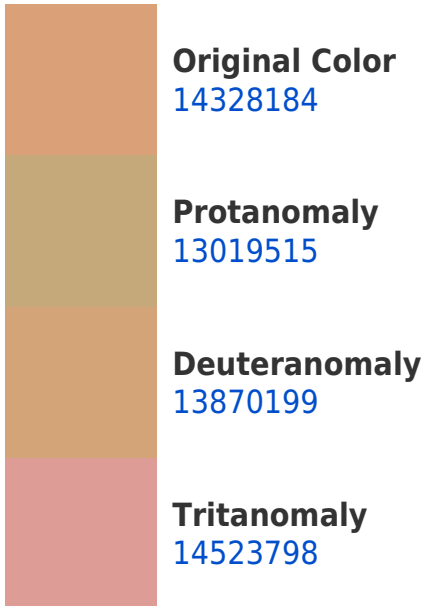
Dichromacy



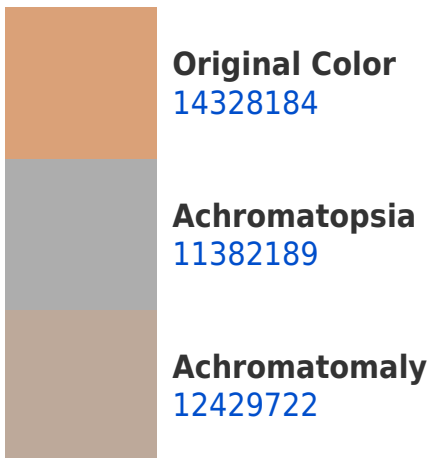


Tritanopia
14588839

Trichromacy



Monochromacy



CSS Examples

Text

The CSS property to change the color of the text to Decimal 14328184 is called "color". The color property can be set on classes, ids or directly on the HTML element.

This example shows how text in the color #DAA178 looks like.

```
.text, #text, p{  
    color:#DAA178  
}
```

If you want to add a text shadow in that color use the text-shadow property, you can generate a text shadow directly with our [CSS Text Shadow Generator](#).

Here you see how black text with a 4 pixel #DAA178 colored shadow looks like.

```
.shadow{ text-shadow: 4px 4px 2px #DAA178
}
```

Border

The CSS property to change the border of an element to Decimal 14328184 is called "border". The border property can be set on classes, ids or directly on the HTML element.

This example shows the color as border, it can be applied via the CSS property "border" or "border-color".

```
.border, #border, table{ border:4px solid
#DAA178 }
```

If only the border color should be changed use the property `border-color`.

```
.border{ border-color:#DAA178 }
```

If you want to add a box shadow in that color use:

Here you see how a box with a 4 pixel #DAA178 colored shadow looks like.

```
.boxshadow{ -moz-box-shadow:4px 4px 4px  
4px #DAA178; -webkit-box-shadow:4px 4px  
4px 4px #DAA178; box-shadow:4px 4px 4px  
4px #DAA178 }
```

Background

The CSS property to change the background color of an element to Decimal 14328184 is called "background". The background property can be set on classes, ids or directly on the HTML element.

```
.background, #background, body{  
background:#DAA178 }
```

If only the background color should be changed can be used:

```
.background{ background-color:#DAA178 }
```

This example shows the color as background, it is applied via the CSS property "background".

To optimize and compress your CSS code, you can use our [online CSS compressor and optimizer](#) based on csstidy. If you want to create a linear or radial gradient as background or border, check our [CSS Gradient Generator](#).

Hey! You found this booklet interesting? Support Converting Colors with the new Membership Option!

The pro membership hides all ads, plus gives you double the colors in the color bucket, and more awesome pro features!

[Learn more, Memberships starting at \\$2.50/m!](#)

**Follow me
on Twitter!**

@ConvertingColor