

Converting Colors

Decimal(14330013)

Have a look what the booklet for
Decimal(14330013) contains.

Decimal(14330013)	3
<i>Conversions</i>	4
<i>Details</i>	6
<i>Harmonies</i>	11
<i>Previews</i>	23
<i>Color Blindness Simulation</i>	26
<i>CSS Examples</i>	29

Color

Decimal(14330013)

Conversions

Conversions Part 1

Format	Color
Hex	DAA89D
RGB	218, 168, 157
RGB Percent	85%, 66%, 62%
CMY	0.1451, 0.3412, 0.3843
CMYK	0.00, 0.23, 0.28, 0.15
HSL	11°, 45%, 74%
HSV	11°, 28%, 85%
XYZ	49.0019, 45.3450, 38.0681
YIQ	181.6960, 33.3310, 7.1790

Conversions

Conversions Part 2

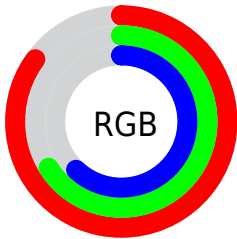
Format	Color
R _Y B	218, 170, 157
Decimal	14330013
CIE Lab	73.12, 16.79, 12.76
CIE LCh	73, 21.088, 37.224
Yxy	45.3450, 0.3701, 0.3424
Android (android.graphics.Color)	4292520093 (0xFFDAA89D)
YUV	181.6960, -12.1751, 31.8386
Hunter-Lab	67.3387, 12.0504, 13.6191

Details

The Decimal color **14330013** is a light color, and the websafe version is hex **CC9999**. A complement of this color would be **10342362**, and the grayscale version is **11974326**.

A 20% lighter version of the original color is **16768980**, and **10646634** is the 20% darker color. If you saturate the color by 10%, you get **14325383**, and if you desaturate by 10%, it is **14334643**.

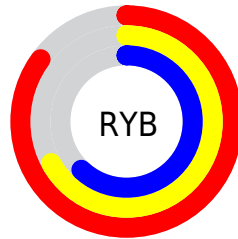
Distribution



Red (85%)

Green (66%)

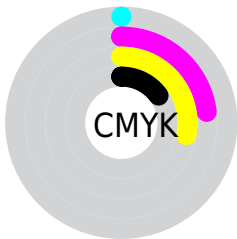
Blue (62%)



Red (85%)

Yellow (67%)

Blue (62%)

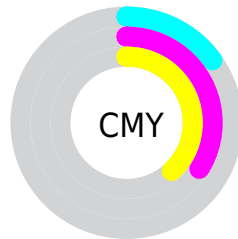


Cyan (0%)

Magenta (23%)

Yellow (28%)

Black (15%)



Cyan (15%)

Magenta (34%)

Yellow (38%)

Brightness & Saturation Gradients

These gradients show how the Decimal color 14330013 changes by changing the brightness by 10 percent. The first figure shows a shift by +10% for each color and the second figure -10%.

Similar to the brightness gradients but the following saturation gradients show a change of the Decimal color 14330013 by changing the saturation by 10% instead.

 14330013

 14330013

16777215

 12488067

 16768980

 10646634

 16776432

 8870738

 7160635

 5451045

 3872528

 2424832

 0

 14330013

 14330013

 14325383

 14334643

 14320753

 14339273

 14316124

 14343902

 14311750

 14348276

 14307120

 14352383

 14302490

 14297860

 14296832

Harmonies

Analogous

The Analogous color harmony consists of three colors that are next to each other on the color wheel.



14395055



14330013



13610384

Triad

The Triadic color harmony groups three colors that are evenly spaced from another and form a triangle on the color wheel.



14330013



9616804



10728665

Complementary

The Complementary color scheme is a pair of colors which are on the opposite of each other on the color wheel.



14330013



10342362

Split Complementary

Split-complementary colors differ from the complementary color scheme. The scheme consists of three colors, the original color and two neighbors of the complement color.



9222871



14330013



8568760

Square

The Square scheme is like the rectangle color scheme, but the four colors are evenly spaced on the color wheel.



14330013



11057556



8371658



12430802

Rectangle

The Rectangle color scheme consists of four colors that form a rectangle on the color wheel.



14330013



12890765



8371658



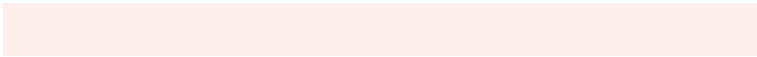
10204890

Sweetspot

The Sweet Spot groups the original color and five complimentary colors.



14330013



16772843



14327248



8418675



0



8421504

Same Dimension

The Same Dimension uses a secret algorithm to generate beautiful new colors.



14330013



16758952



14337693



7234915



11345664



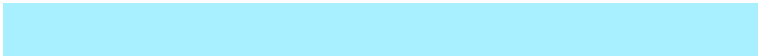
3016704

Inverse Universe

The Inverse Universe completely reimagines the original color for something new.



10342362



11071487



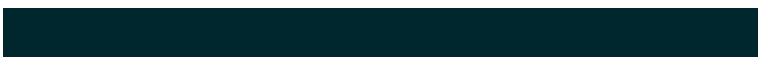
10334682



6515822



36525



9774

Previews

White Background



This preview shows how the Decimal color 14330013 looks on a white background.

Color Contrast Check

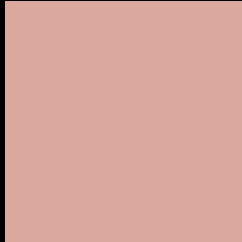
Large Text (above 18pt) WCAG AA × Fail

Any Text WCAG AA × Fail

Large Text (above 18pt) WCAG AAA × Fail

Any Text WCAG AAA × Fail

Black Background



This preview shows how the Decimal color 14330013 looks on a black background.

Color Contrast Check

Large Text (above 18pt) WCAG AA ✓ Pass

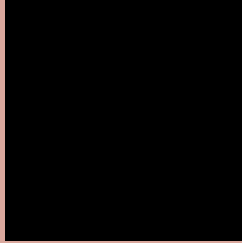
Any Text WCAG AA ✓ Pass

Large Text (above 18pt) WCAG AAA ✓ Pass

Any Text WCAG AAA ✓ Pass

If you want to check with other color combinations, try the [Color Contrast Checker](#).

Decimal 14330013 Background



This preview shows how black text looks on a background with the Decimal color 14330013.



This preview shows how white text looks on a background with the Decimal color 14330013.

Color Blindness Simulation

Color vision deficiency is a very complex topic, and I could not describe the different causes any better than Wikipedia does, so if you want to learn more, you should check out their [article about color blindness](#).


Dichromacy



Original Color
14330013

Protanopia
12301219

Deuteranopia
13544860



Tritanopia
14460338

Trichromacy



Original Color
14330013

Protanomaly
13021089

Deuteranomaly
13806492

Tritanomaly
14395050

Monochromacy



Original Color
14330013

Achromatopsia
11974326

Achromatomaly
12825005

CSS Examples

Text

The CSS property to change the color of the text to Decimal 14330013 is called "color". The color property can be set on classes, ids or directly on the HTML element.

This example shows how text in the color #DAA89D looks like.

```
.text, #text, p{  
    color:#DAA89D  
}
```

If you want to add a text shadow in that color use the text-shadow property, you can generate a text shadow directly with our [CSS Text Shadow Generator](#).

Here you see how black text with a 4 pixel #DAA89D colored shadow looks like.

```
.shadow{ text-shadow: 4px 4px 2px #DAA89D
}
```

Border

The CSS property to change the border of an element to Decimal 14330013 is called "border". The border property can be set on classes, ids or directly on the HTML element.

This example shows the color as border, it can be applied via the CSS property "border" or "border-color".

```
.border, #border, table{ border:4px solid
#DAA89D }
```

If only the border color should be changed use the property `border-color`.

```
.border{ border-color:#DAA89D }
```

If you want to add a box shadow in that color use:

Here you see how a box with a 4 pixel #DAA89D colored shadow looks like.

```
.boxshadow{ -moz-box-shadow:4px 4px 4px  
4px #DAA89D; -webkit-box-shadow:4px 4px  
4px 4px #DAA89D; box-shadow:4px 4px 4px  
4px #DAA89D }
```

Background

The CSS property to change the background color of an element to Decimal 14330013 is called "background". The background property can be set on classes, ids or directly on the HTML element.

```
.background, #background, body{  
background:#DAA89D }
```

If only the background color should be changed can be used:

```
.background{ background-color:#DAA89D }
```

This example shows the color as background, it is applied via the CSS property "background".

To optimize and compress your CSS code, you can use our [online CSS compressor and optimizer](#) based on csstidy. If you want to create a linear or radial gradient as background or border, check our [CSS Gradient Generator](#).

Hey! You found this booklet interesting? Support Converting Colors with the new Membership Option!

The pro membership hides all ads, plus gives you double the colors in the color bucket, and more awesome pro features!

[Learn more, Memberships starting at \\$2.50/m!](#)

**Follow me
on Twitter!**

@ConvertingColor