

Converting Colors

Decimal(14330027)

Have a look what the booklet for
Decimal(14330027) contains.

Decimal(14330027)	3
<i>Conversions</i>	4
<i>Details</i>	6
<i>Harmonies</i>	11
<i>Previews</i>	23
<i>Color Blindness Simulation</i>	26
<i>CSS Examples</i>	29

Color

Decimal(14330027)

Conversions

Conversions Part 1

Format	Color
Hex	DAA8AB
RGB	218, 168, 171
RGB Percent	85%, 66%, 67%
CMY	0.1451, 0.3412, 0.3294
CMYK	0.00, 0.23, 0.22, 0.15
HSL	356°, 40%, 76%
HSV	356°, 23%, 85%
XYZ	50.2668, 45.8510, 44.7289
YIQ	183.2920, 28.8370, 11.5330

Conversions

Conversions Part 2

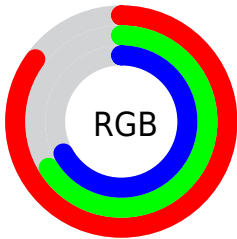
Format	Color
R _Y B	218, 168, 171
Decimal	14330027
CIE Lab	73.45, 18.79, 5.55
CIE LCh	73, 19.591, 16.447
Yxy	45.8510, 0.3569, 0.3255
Android (android.graphics.Color)	4292520107 (0xFFDAA8AB)
YUV	183.2920, -6.0600, 30.4389
Hunter-Lab	67.7133, 14.0105, 8.2346

Details

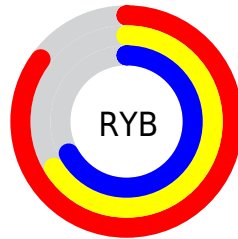
The Decimal color **14330027** is a light color, and the websafe version is hex **CC9999**. A complement of this color would be **11066071**, and the grayscale version is **12040119**.

A 20% lighter version of the original color is **16768994**, and **10646647** is the 20% darker color. If you saturate the color by 10%, you get **14324375**, and if you desaturate by 10%, it is **14335679**.

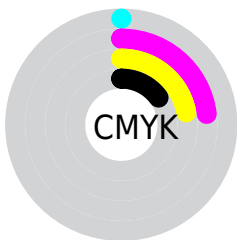
Distribution



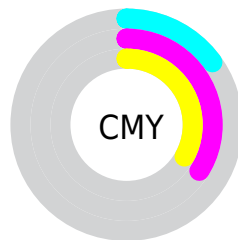
- Red (85%)
- Green (66%)
- Blue (67%)



- Red (85%)
- Yellow (66%)
- Blue (67%)



- Cyan (0%)
- Magenta (23%)
- Yellow (22%)
- Black (15%)



- Cyan (15%)
- Magenta (34%)
- Yellow (33%)

Brightness & Saturation Gradients

These gradients show how the Decimal color 14330027 changes by changing the brightness by 10 percent. The first figure shows a shift by +10% for each color and the second figure -10%.

Similar to the brightness gradients but the following saturation gradients show a change of the Decimal color 14330027 by changing the saturation by 10% instead.

 14330027

 14330027

16777215

 12488081

 16768994

 10646647

 16776447

 8870750

 7160647

 5516336

 3938075

 2555904

 0

 14330027

 14330027

 14324375

 14335679

 14318722

 14341332

 14313326

 14346728

 14307673

 14352381

 14302021

 14352383

 14296368

 14290716

 14286861

Harmonies

Analogous

The Analogous color harmony consists of three colors that are next to each other on the color wheel.



13937085



14330027



14068635

Triad

The Triadic color harmony groups three colors that are evenly spaced from another and form a triangle on the color wheel.



14330027



10730395



9877719

Complementary

The Complementary color scheme is a pair of colors which are on the opposite of each other on the color wheel.



14330027



11066071

Split Complementary

Split-complementary colors differ from the complementary color scheme. The scheme consists of three colors, the original color and two neighbors of the complement color.



8830414



14330027



9485995

Square

The Square scheme is like the rectangle color scheme, but the four colors are evenly spaced on the color wheel.



14330027



12105362



8765374



11383767

Rectangle

The Rectangle color scheme consists of four colors that form a rectangle on the color wheel.



14330027



13610644



8765374



9419477

Sweetspot

The Sweet Spot groups the original color and five complimentary colors.



14330027



16772590



14133466



8418678



0



8421504

Same Dimension

The Same Dimension uses a secret algorithm to generate beautiful new colors.



14330027



16758972



14335656



7234403



11337738



3014659

Inverse Universe

The Inverse Universe completely reimagines the original color for something new.



14330027



16758972



11060442



7234403



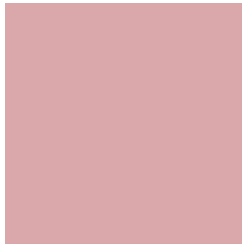
11337738



3014659

Previews

White Background



This preview shows how the Decimal color 14330027 looks on a white background.

Color Contrast Check

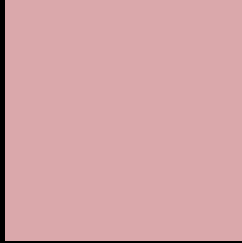
Large Text (above 18pt) WCAG AA × Fail

Any Text WCAG AA × Fail

Large Text (above 18pt) WCAG AAA × Fail

Any Text WCAG AAA × Fail

Black Background



This preview shows how the Decimal color 14330027 looks on a black background.

Color Contrast Check

Large Text (above 18pt) WCAG AA ✓ Pass

Any Text WCAG AA ✓ Pass

Large Text (above 18pt) WCAG AAA ✓ Pass

Any Text WCAG AAA ✓ Pass

If you want to check with other color combinations, try the [Color Contrast Checker](#).

Decimal 14330027 Background



This preview shows how black text looks on a background with the Decimal color 14330027.



This preview shows how white text looks on a background with the Decimal color 14330027.

Color Blindness Simulation

Color vision deficiency is a very complex topic, and I could not describe the different causes any better than Wikipedia does, so if you want to learn more, you should check out their [article about color blindness](#).


Dichromacy



Original Color
14330027

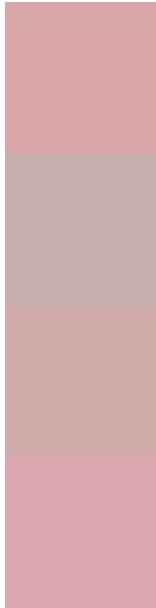
Protanopia
12170418

Deuteranopia
13282986



Tritanopia
14395316

Trichromacy



Original Color
14330027

Protanomaly
12955823

Deuteranomaly
13675690

Tritanomaly
14395313

Monochromacy



Original Color
14330027

Achromatopsia
12040119

Achromatomaly
12890803

CSS Examples

Text

The CSS property to change the color of the text to Decimal 14330027 is called "color". The color property can be set on classes, ids or directly on the HTML element.

This example shows how text in the color #DAA8AB looks like.

```
.text, #text, p{  
    color:#DAA8AB  
}
```

If you want to add a text shadow in that color use the text-shadow property, you can generate a text shadow directly with our [CSS Text Shadow Generator](#).

Here you see how black text with a 4 pixel #DAA8AB colored shadow looks like.

```
.shadow{ text-shadow: 4px 4px 2px #DAA8AB
}
```

Border

The CSS property to change the border of an element to Decimal 14330027 is called "border". The border property can be set on classes, ids or directly on the HTML element.

This example shows the color as border, it can be applied via the CSS property "border" or "border-color".

```
.border, #border, table{ border:4px solid
#DAA8AB }
```

If only the border color should be changed use the property `border-color`.

```
.border{ border-color:#DAA8AB }
```

If you want to add a box shadow in that color use:

Here you see how a box with a 4 pixel #DAA8AB colored shadow looks like.

```
.boxshadow{ -moz-box-shadow:4px 4px 4px  
4px #DAA8AB; -webkit-box-shadow:4px 4px  
4px 4px #DAA8AB; box-shadow:4px 4px 4px  
4px #DAA8AB }
```

Background

The CSS property to change the background color of an element to Decimal 14330027 is called "background". The background property can be set on classes, ids or directly on the HTML element.

```
.background, #background, body{  
background:#DAA8AB }
```

If only the background color should be changed can be used:

```
.background{ background-color:#DAA8AB }
```

This example shows the color as background, it is applied via the CSS property "background".

To optimize and compress your CSS code, you can use our [online CSS compressor and optimizer](#) based on csstidy. If you want to create a linear or radial gradient as background or border, check our [CSS Gradient Generator](#).

Hey! You found this booklet interesting? Support Converting Colors with the new Membership Option!

The pro membership hides all ads, plus gives you double the colors in the color bucket, and more awesome pro features!

[Learn more, Memberships starting at \\$2.50/m!](#)

**Follow me
on Twitter!**

@ConvertingColor