

Converting Colors

Decimal(14330041)

Have a look what the booklet for
Decimal(14330041) contains.

Decimal(14330041)	3
<i>Conversions</i>	4
<i>Details</i>	6
<i>Harmonies</i>	11
<i>Previews</i>	23
<i>Color Blindness Simulation</i>	26
<i>CSS Examples</i>	29

Color

Decimal(14330041)

Conversions

Conversions Part 1

Format	Color
Hex	DAA8B9
RGB	218, 168, 185
RGB Percent	85%, 66%, 73%
CMY	0.1451, 0.3412, 0.2745
CMYK	0.00, 0.23, 0.15, 0.15
HSL	340°, 40%, 76%
HSV	340°, 23%, 85%
XYZ	51.6730, 46.4135, 52.1342
YIQ	184.8880, 24.3430, 15.8870

Conversions

Conversions Part 2

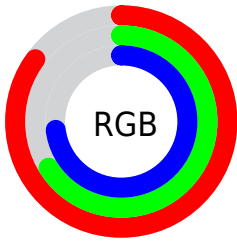
Format	Color
R_{YB}	218, 168, 185
Decimal	14330041
CIE Lab	73.81, 20.95, -1.62
CIE LCh	74, 21.017, 355.593
Yxy	46.4135, 0.3440, 0.3090
Android (android.graphics.Color)	4292520121 (0xFFDAA8B9)
YUV	184.8880, 0.0552, 29.0392
Hunter-Lab	68.1274, 16.1650, 2.3178

Details

The Decimal color **14330041** is a light color, and the websafe version is hex **CC9999**. A complement of this color would be **11066057**, and the grayscale version is **12171705**.

A 20% lighter version of the original color is **16769009**, and **10646660** is the 20% darker color. If you saturate the color by 10%, you get **14324395**, and if you desaturate by 10%, it is **14335687**.

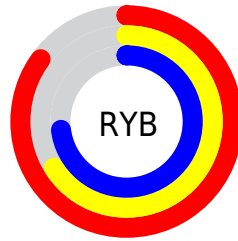
Distribution



Red (85%)

Green (66%)

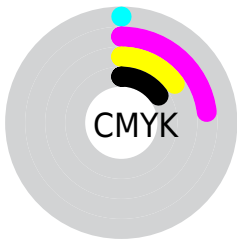
Blue (73%)



Red (85%)

Yellow (66%)

Blue (73%)

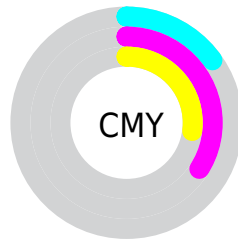


Cyan (0%)

Magenta (23%)

Yellow (15%)

Black (15%)



Cyan (15%)

Magenta (34%)

Yellow (27%)

Brightness & Saturation Gradients

These gradients show how the Decimal color 14330041 changes by changing the brightness by 10 percent. The first figure shows a shift by +10% for each color and the second figure -10%.

Similar to the brightness gradients but the following saturation gradients show a change of the Decimal color 14330041 by changing the saturation by 10% instead.

 14330041

 14330041

16777215

 12488094

 16769009

 10646660

 16776447

 8936299

 7226195

 5581884

 4003366

 2555921

 0

 14330041

 14330041

 14324395

 14335687

 14318748

 14341334

 14313358

 14346724

 14307711

 14352371

 14302065

 14352383

 14296419

 14290772

 14286922

Harmonies

Analogous

The Analogous color harmony consists of three colors that are next to each other on the color wheel.



13413323



14330041



14526886

Triad

The Triadic color harmony groups three colors that are evenly spaced from another and form a triangle on the color wheel.



14330041



11712914



8895957

Complementary

The Complementary color scheme is a pair of colors which are on the opposite of each other on the color wheel.



14330041



11066057

Split Complementary

Split-complementary colors differ from the complementary color scheme. The scheme consists of three colors, the original color and two neighbors of the complement color.



8437957



14330041



10272415

Square

The Square scheme is like the rectangle color scheme, but the four colors are evenly spaced on the color wheel.



14330041



13087631



9027762



10205403

Rectangle

The Rectangle color scheme consists of four colors that form a rectangle on the color wheel.



14330041



14330779



9027762



8634064

Sweetspot

The Sweet Spot groups the original color and five complimentary colors.



14330041



16772595



13215962



8418681



0



8421504

Same Dimension

The Same Dimension uses a secret algorithm to generate beautiful new colors.



14330041



16758992



14332072



7234406



11337787



3014672

Inverse Universe

The Inverse Universe completely reimagines the original color for something new.



14330041



16758992



11064282



7234406



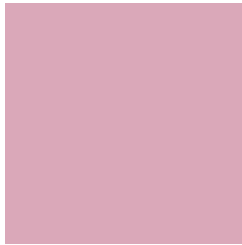
11337787



3014672

Previews

White Background



This preview shows how the Decimal color 14330041 looks on a white background.

Color Contrast Check

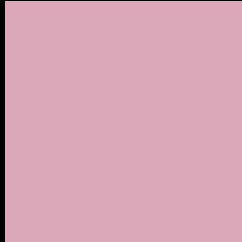
Large Text (above 18pt) WCAG AA × Fail

Any Text WCAG AA × Fail

Large Text (above 18pt) WCAG AAA × Fail

Any Text WCAG AAA × Fail

Black Background



This preview shows how the Decimal color 14330041 looks on a black background.

Color Contrast Check

Large Text (above 18pt) WCAG AA ✓ Pass

Any Text WCAG AA ✓ Pass

Large Text (above 18pt) WCAG AAA ✓ Pass

Any Text WCAG AAA ✓ Pass

If you want to check with other color combinations, try the [Color Contrast Checker](#).

Decimal 14330041 Background



This preview shows how black text looks on a background with the Decimal color 14330041.



This preview shows how white text looks on a background with the Decimal color 14330041.

Color Blindness Simulation

Color vision deficiency is a very complex topic, and I could not describe the different causes any better than Wikipedia does, so if you want to learn more, you should check out their [article about color blindness](#).

Dichromacy



Original Color
14330041

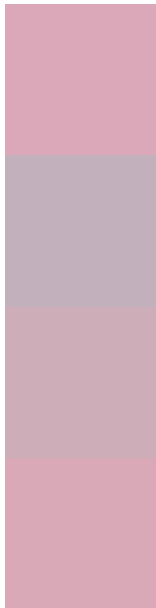
Protanopia
11974080

Deuteranopia
13021368



Tritanopia
14330294

Trichromacy



Original Color
14330041

Protanomaly
12824765

Deuteranomaly
13479352

Tritanomaly
14330295

Monochromacy



Original Color
14330041

Achromatopsia
12171705

Achromatomaly
12956601

CSS Examples

Text

The CSS property to change the color of the text to Decimal 14330041 is called "color". The color property can be set on classes, ids or directly on the HTML element.

This example shows how text in the color #DAA8B9 looks like.

```
.text, #text, p{  
    color:#DAA8B9  
}
```

If you want to add a text shadow in that color use the text-shadow property, you can generate a text shadow directly with our [CSS Text Shadow Generator](#).

Here you see how black text with a 4 pixel #DAA8B9 colored shadow looks like.

```
.shadow{ text-shadow: 4px 4px 2px #DAA8B9
}
```

Border

The CSS property to change the border of an element to Decimal 14330041 is called "border". The border property can be set on classes, ids or directly on the HTML element.

This example shows the color as border, it can be applied via the CSS property "border" or "border-color".

```
.border, #border, table{ border:4px solid
#DAA8B9 }
```

If only the border color should be changed use the property `border-color`.

```
.border{ border-color:#DAA8B9 }
```

If you want to add a box shadow in that color use:

Here you see how a box with a 4 pixel #DAA8B9 colored shadow looks like.

```
.boxshadow{ -moz-box-shadow:4px 4px 4px  
4px #DAA8B9; -webkit-box-shadow:4px 4px  
4px 4px #DAA8B9; box-shadow:4px 4px 4px  
4px #DAA8B9 }
```

Background

The CSS property to change the background color of an element to Decimal 14330041 is called "background". The background property can be set on classes, ids or directly on the HTML element.

```
.background, #background, body{  
background:#DAA8B9 }
```

If only the background color should be changed can be used:

```
.background{ background-color:#DAA8B9 }
```

This example shows the color as background, it is applied via the CSS property "background".

To optimize and compress your CSS code, you can use our [online CSS compressor and optimizer](#) based on csstidy. If you want to create a linear or radial gradient as background or border, check our [CSS Gradient Generator](#).

Hey! You found this booklet interesting? Support Converting Colors with the new Membership Option!

The pro membership hides all ads, plus gives you double the colors in the color bucket, and more awesome pro features!

[Learn more, Memberships starting at \\$2.50/m!](#)

**Follow me
on Twitter!**

@ConvertingColor