

Converting Colors

Decimal(14330256)

Have a look what the booklet for
Decimal(14330256) contains.

Decimal(14330256)	3
<i>Conversions</i>	4
<i>Details</i>	6
<i>Harmonies</i>	11
<i>Previews</i>	23
<i>Color Blindness Simulation</i>	26
<i>CSS Examples</i>	29

Color

Decimal(14330256)

Conversions

Conversions Part 1

Format	Color
Hex	DAA990
RGB	218, 169, 144
RGB Percent	85%, 66%, 56%
CMY	0.1451, 0.3373, 0.4353
CMYK	0.00, 0.22, 0.34, 0.15
HSL	20°, 50%, 71%
HSV	20°, 34%, 85%
XYZ	48.1355, 45.2950, 32.5913
YIQ	180.8010, 37.2290, 2.6130

Conversions

Conversions Part 2

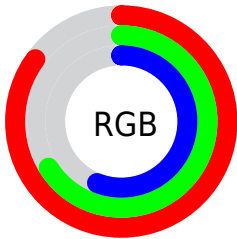
Format	Color
R _Y B	218, 182, 144
Decimal	14330256
CIE Lab	73.09, 14.56, 19.81
CIE LCh	73, 24.583, 53.692
Yxy	45.2950, 0.3820, 0.3594
Android (android.graphics.Color)	4292520336 (0xFFDAA990)
YUV	180.8010, -18.1429, 32.6235
Hunter-Lab	67.3015, 9.8892, 18.3994

Details

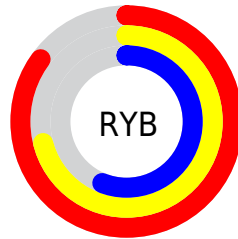
The Decimal color **14330256** is a light color, and the websafe version is hex **CC9999**. A complement of this color would be **9486810**, and the grayscale version is **11908533**.

A 20% lighter version of the original color is **16769222**, and **10646877** is the 20% darker color. If you saturate the color by 10%, you get **14326650**, and if you desaturate by 10%, it is **14333862**.

Distribution



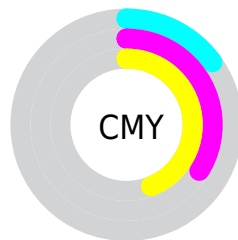
- Red (85%)
- Green (66%)
- Blue (56%)



- Red (85%)
- Yellow (71%)
- Blue (56%)



- Cyan (0%)
- Magenta (22%)
- Yellow (34%)
- Black (15%)



- Cyan (15%)
- Magenta (34%)
- Yellow (44%)

Brightness & Saturation Gradients

These gradients show how the Decimal color 14330256 changes by changing the brightness by 10 percent. The first figure shows a shift by +10% for each color and the second figure -10%.

Similar to the brightness gradients but the following saturation gradients show a change of the Decimal color 14330256 by changing the saturation by 10% instead.

 14330256

 14330256


16777215

 12488310

 16769222


 10646877

 16776674

 8805446

 7095343

 5385754

 3807488

 2293760

 0

 14330256

 14330256

 14326650

 14333862

 14322788

 14337724

 14319183

 14341329

 14315321

 14345191

 14311715

 14348797

 14307853

 14352383

 14305792

Harmonies

Analogous

The Analogous color harmony consists of three colors that are next to each other on the color wheel.



14853282



14330256



13217927

Triad

The Triadic color harmony groups three colors that are evenly spaced from another and form a triangle on the color wheel.



14330256



8437934



11644892

Complementary

The Complementary color scheme is a pair of colors which are on the opposite of each other on the color wheel.



14330256



9486810

Split Complementary

Split-complementary colors differ from the complementary color scheme. The scheme consists of three colors, the original color and two neighbors of the complement color.



9615328



14330256



7585989

Square

The Square scheme is like the rectangle color scheme, but the four colors are evenly spaced on the color wheel.



14330256



9944472



7978455



13412558

Rectangle

The Rectangle color scheme consists of four colors that form a rectangle on the color wheel.



14330256



12236168



7978455



10924767

Sweetspot

The Sweet Spot groups the original color and five complimentary colors.



14330256



16772838



14323905



8418672



0



8421504

Same Dimension

The Same Dimension uses a secret algorithm to generate beautiful new colors.



14330256



16759446



14339728



7235171



11352832



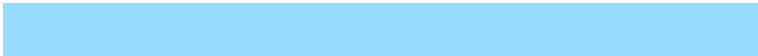
3018752

Inverse Universe

The Inverse Universe completely reimagines the original color for something new.



9486810



9886975



9477338



6515310



29613



7726

Previews

White Background



This preview shows how the Decimal color 14330256 looks on a white background.

Color Contrast Check

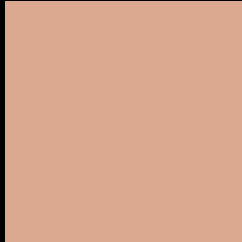
Large Text (above 18pt) WCAG AA × Fail

Any Text WCAG AA × Fail

Large Text (above 18pt) WCAG AAA × Fail

Any Text WCAG AAA × Fail

Black Background



This preview shows how the Decimal color 14330256 looks on a black background.

Color Contrast Check

Large Text (above 18pt) WCAG AA ✓ Pass

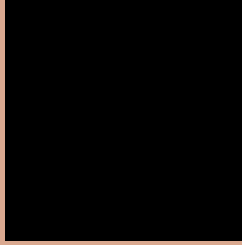
Any Text WCAG AA ✓ Pass

Large Text (above 18pt) WCAG AAA ✓ Pass

Any Text WCAG AAA ✓ Pass

If you want to check with other color combinations, try the [Color Contrast Checker](#).

Decimal 14330256 Background



This preview shows how black text looks on a background with the Decimal color 14330256.




This preview shows how white text looks on a background with the Decimal color 14330256.

Color Blindness Simulation

Color vision deficiency is a very complex topic, and I could not describe the different causes any better than Wikipedia does, so if you want to learn more, you should check out their [article about color blindness](#).

Dichromacy





Tritanopia
14525617

Trichromacy



Original Color
14330256

Protanomaly
13152147

Deuteranomaly
13937807

Tritanomaly
14460581

Monochromacy



Original Color
14330256

Achromatopsia
11908533

Achromatomaly
12759464

CSS Examples

Text

The CSS property to change the color of the text to Decimal 14330256 is called "color". The color property can be set on classes, ids or directly on the HTML element.

This example shows how text in the color #DAA990 looks like.

```
.text, #text, p{  
    color:#DAA990  
}
```

If you want to add a text shadow in that color use the text-shadow property, you can generate a text shadow directly with our [CSS Text Shadow Generator](#).

Here you see how black text with a 4 pixel #DAA990 colored shadow looks like.

```
.shadow{ text-shadow: 4px 4px 2px #DAA990
}
```

Border

The CSS property to change the border of an element to Decimal 14330256 is called "border". The border property can be set on classes, ids or directly on the HTML element.

This example shows the color as border, it can be applied via the CSS property "border" or "border-color".

```
.border, #border, table{ border:4px solid
#DAA990 }
```

If only the border color should be changed use the property `border-color`.

```
.border{ border-color:#DAA990 }
```

If you want to add a box shadow in that color use:

Here you see how a box with a 4 pixel #DAA990 colored shadow looks like.

```
.boxshadow{ -moz-box-shadow:4px 4px 4px  
4px #DAA990; -webkit-box-shadow:4px 4px  
4px 4px #DAA990; box-shadow:4px 4px 4px  
4px #DAA990 }
```

Background

The CSS property to change the background color of an element to Decimal 14330256 is called "background". The background property can be set on classes, ids or directly on the HTML element.

```
.background, #background, body{  
background:#DAA990 }
```

If only the background color should be changed can be used:

```
.background{ background-color:#DAA990 }
```

This example shows the color as background, it is applied via the CSS property "background".

To optimize and compress your CSS code, you can use our [online CSS compressor and optimizer](#) based on csstidy. If you want to create a linear or radial gradient as background or border, check our [CSS Gradient Generator](#).

Hey! You found this booklet interesting? Support Converting Colors with the new Membership Option!

The pro membership hides all ads, plus gives you double the colors in the color bucket, and more awesome pro features!

[Learn more, Memberships starting at \\$2.50/m!](#)

**Follow me
on Twitter!**

@ConvertingColor