

Converting Colors

Decimal(14330281)

Have a look what the booklet for
Decimal(14330281) contains.

Decimal(14330281)	3
<i>Conversions</i>	4
<i>Details</i>	6
<i>Harmonies</i>	11
<i>Previews</i>	23
<i>Color Blindness Simulation</i>	26
<i>CSS Examples</i>	29

Color

Decimal(14330281)

Conversions

Conversions Part 1

Format	Color
Hex	DAA9A9
RGB	218, 169, 169
RGB Percent	85%, 66%, 66%
CMY	0.1451, 0.3373, 0.3373
CMYK	0.00, 0.22, 0.22, 0.15
HSL	0°, 40%, 76%
HSV	0°, 22%, 85%
XYZ	50.2628, 46.1459, 43.7940
YIQ	183.6510, 29.2040, 10.3880

Conversions

Conversions Part 2

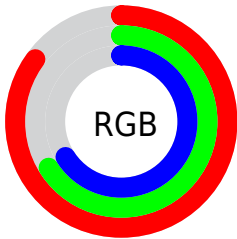
Format	Color
R _Y B	218, 169, 169
Decimal	14330281
CIE Lab	73.64, 17.95, 6.92
CIE LCh	74, 19.241, 21.077
Yxy	46.1459, 0.3585, 0.3291
Android (android.graphics.Color)	4292520361 (0xFFDAA9A9)
YUV	183.6510, -7.2229, 30.1241
Hunter-Lab	67.9308, 13.1955, 9.3281

Details

The Decimal color **14330281** is a light color, and the websafe version is hex **CC9999**. A complement of this color would be **11131610**, and the grayscale version is **12105912**.

A 20% lighter version of the original color is **16769248**, and **10646901** is the 20% darker color. If you saturate the color by 10%, you get **14324627**, and if you desaturate by 10%, it is **14335935**.

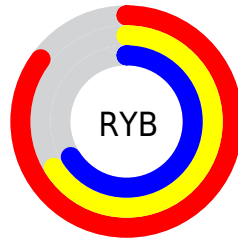
Distribution



Red (85%)

Green (66%)

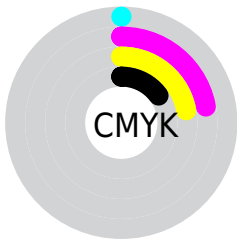
Blue (66%)



Red (85%)

Yellow (66%)

Blue (66%)

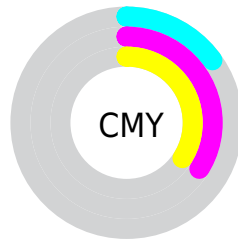


Cyan (0%)

Magenta (22%)

Yellow (22%)

Black (15%)



Cyan (15%)

Magenta (34%)

Yellow (34%)

Brightness & Saturation Gradients

These gradients show how the Decimal color 14330281 changes by changing the brightness by 10 percent. The first figure shows a shift by +10% for each color and the second figure -10%.

Similar to the brightness gradients but the following saturation gradients show a change of the Decimal color 14330281 by changing the saturation by 10% instead.

 14330281

 14330281

16777215

 12488335

 16769248

 10646901

 16776701

 8871004

 7160901

 5516591

 3938330

 2555904

 0

 14330281

 14330281

 14324627

 14335935

 14318973

 14341589

 14313576

 14346986

 14307922

 14352383

 14302268

 14296614

 14290960

 14286848

Harmonies

Analogous

The Analogous color harmony consists of three colors that are next to each other on the color wheel.



14002619



14330281



14003354

Triad

The Triadic color harmony groups three colors that are evenly spaced from another and form a triangle on the color wheel.



14330281



10599582



10139863

Complementary

The Complementary color scheme is a pair of colors which are on the opposite of each other on the color wheel.



14330281



11131610

Split Complementary

Split-complementary colors differ from the complementary color scheme. The scheme consists of three colors, the original color and two neighbors of the complement color.



9027024



14330281



9420719

Square

The Square scheme is like the rectangle color scheme, but the four colors are evenly spaced on the color wheel.



14330281



11909268



8830913



11645654

Rectangle

The Rectangle color scheme consists of four colors that form a rectangle on the color wheel.



14330281



13480084



8830913



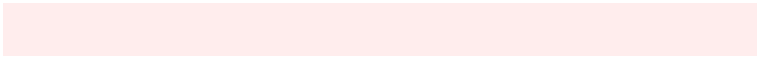
9747158

Sweetspot

The Sweet Spot groups the original color and five complimentary colors.



14330281



16772589



14330330



8418677



0



8421504

Same Dimension

The Same Dimension uses a secret algorithm to generate beautiful new colors.



14330281



16759482



14336681



7234403



11337728



3014656

Inverse Universe

The Inverse Universe completely reimagines the original color for something new.



11131610



12255231



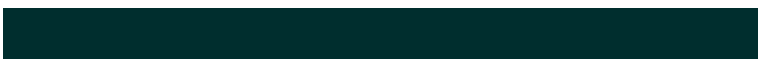
11125466



6516334



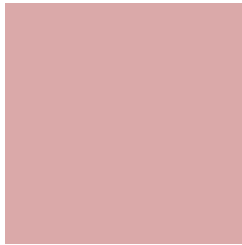
44461



11822

Previews

White Background



This preview shows how the Decimal color 14330281 looks on a white background.

Color Contrast Check

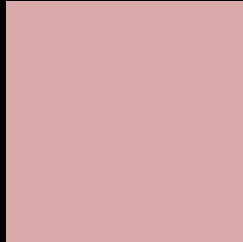
Large Text (above 18pt) WCAG AA × Fail

Any Text WCAG AA × Fail

Large Text (above 18pt) WCAG AAA × Fail

Any Text WCAG AAA × Fail

Black Background



This preview shows how the Decimal color 14330281 looks on a black background.

Color Contrast Check

Large Text (above 18pt) WCAG AA ✓ Pass

Any Text WCAG AA ✓ Pass

Large Text (above 18pt) WCAG AAA ✓ Pass

Any Text WCAG AAA ✓ Pass

If you want to check with other color combinations, try the [Color Contrast Checker](#).

Decimal 14330281 Background



This preview shows how black text looks on a background with the Decimal color 14330281.




This preview shows how white text looks on a background with the Decimal color 14330281.

Color Blindness Simulation

Color vision deficiency is a very complex topic, and I could not describe the different causes any better than Wikipedia does, so if you want to learn more, you should check out their [article about color blindness](#).

Dichromacy





Tritanopia
14395316

Trichromacy



Original Color
14330281

Protanomaly
13021357

Deuteranomaly
13741480

Tritanomaly
14395568

Monochromacy



Original Color
14330281

Achromatopsia
12105912

Achromatomaly
12891059

CSS Examples

Text

The CSS property to change the color of the text to Decimal 14330281 is called "color". The color property can be set on classes, ids or directly on the HTML element.

This example shows how text in the color #DAA9A9 looks like.

```
.text, #text, p{  
    color:#DAA9A9  
}
```

If you want to add a text shadow in that color use the text-shadow property, you can generate a text shadow directly with our [CSS Text Shadow Generator](#).

Here you see how black text with a 4 pixel #DAA9A9 colored shadow looks like.

```
.shadow{ text-shadow: 4px 4px 2px #DAA9A9
}
```

Border

The CSS property to change the border of an element to Decimal 14330281 is called "border". The border property can be set on classes, ids or directly on the HTML element.

This example shows the color as border, it can be applied via the CSS property "border" or "border-color".

```
.border, #border, table{ border:4px solid
#DAA9A9 }
```

If only the border color should be changed use the property `border-color`.

```
.border{ border-color:#DAA9A9 }
```

If you want to add a box shadow in that color use:

Here you see how a box with a 4 pixel #DAA9A9 colored shadow looks like.

```
.boxshadow{ -moz-box-shadow:4px 4px 4px  
4px #DAA9A9; -webkit-box-shadow:4px 4px  
4px 4px #DAA9A9; box-shadow:4px 4px 4px  
4px #DAA9A9 }
```

Background

The CSS property to change the background color of an element to Decimal 14330281 is called "background". The background property can be set on classes, ids or directly on the HTML element.

```
.background, #background, body{  
background:#DAA9A9 }
```

If only the background color should be changed can be used:

```
.background{ background-color:#DAA9A9 }
```

This example shows the color as background, it is applied via the CSS property "background".

To optimize and compress your CSS code, you can use our [online CSS compressor and optimizer](#) based on csstidy. If you want to create a linear or radial gradient as background or border, check our [CSS Gradient Generator](#).

Hey! You found this booklet interesting? Support Converting Colors with the new Membership Option!

The pro membership hides all ads, plus gives you double the colors in the color bucket, and more awesome pro features!

[Learn more, Memberships starting at \\$2.50/m!](#)

**Follow me
on Twitter!**

@ConvertingColor