

Converting Colors

Decimal(14331776)

Have a look what the booklet for
Decimal(14331776) contains.

Decimal(14331776)	3
<i>Conversions</i>	4
<i>Details</i>	6
<i>Harmonies</i>	11
<i>Previews</i>	23
<i>Color Blindness Simulation</i>	26
<i>CSS Examples</i>	29

Color

Decimal(14331776)

Conversions

Conversions Part 1

Format	Color
Hex	DAAF80
RGB	218, 175, 128
RGB Percent	85%, 69%, 50%
CMY	0.1451, 0.3137, 0.4980
CMYK	0.00, 0.20, 0.41, 0.15
HSL	31°, 55%, 68%
HSV	31°, 41%, 85%
XYZ	48.1397, 47.1239, 26.9807
YIQ	182.4990, 40.7150, -5.5010

Conversions

Conversions Part 2

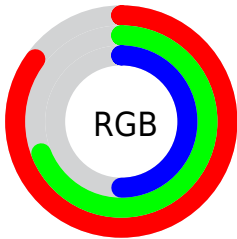
Format	Color
R_{YB}	210, 218, 128
Decimal	14331776
CIE Lab	74.27, 9.47, 30.02
CIE LCh	74, 31.473, 72.493
Yxy	47.1239, 0.3938, 0.3855
Android (android.graphics.Color)	4292521856 (0xFFDAAF80)
YUV	182.4990, -26.8680, 31.1344
Hunter-Lab	68.6468, 5.0440, 24.7497

Details

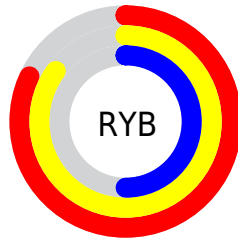
The Decimal color **14331776** is a light color, and the websafe version is hex **CC9966**. A complement of this color would be **8432602**, and the grayscale version is **12040119**.

A 20% lighter version of the original color is **16770997**, and **10582862** is the 20% darker color. If you saturate the color by 10%, you get **14329194**, and if you desaturate by 10%, it is **14334358**.

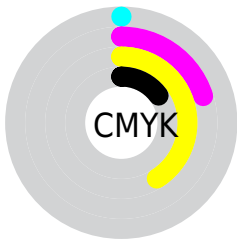
Distribution



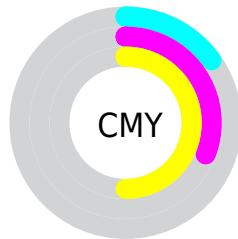
- Red (85%)
- Green (69%)
- Blue (50%)



- Red (82%)
- Yellow (85%)
- Blue (50%)



- Cyan (0%)
- Magenta (20%)
- Yellow (41%)
- Black (15%)



- Cyan (15%)
- Magenta (31%)
- Yellow (50%)

Brightness & Saturation Gradients

These gradients show how the Decimal color 14331776 changes by changing the brightness by 10 percent. The first figure shows a shift by +10% for each color and the second figure -10%.

Similar to the brightness gradients but the following saturation gradients show a change of the Decimal color 14331776 by changing the saturation by 10% instead.

 14331776

 14331776


16777215

 12424295

 16770997

 10582862

 16777169

 8806967

 16777197

 7031328

 5321481

 3677696

 2098944

 0

 14331776

 14331776

 14329194

 14334358

 14326356

 14337196

 14323775

 14339777

 14320937

 14342615

 14318355

 14345197

 14316032

 14347775

 14350591

 14352383

Harmonies

Analogous

The Analogous color harmony consists of three colors that are next to each other on the color wheel.



15509137



14331776



12564862

Triad

The Triadic color harmony groups three colors that are evenly spaced from another and form a triangle on the color wheel.



14331776



6408130



13282273

Complementary

The Complementary color scheme is a pair of colors which are on the opposite of each other on the color wheel.



14331776



8432602

Split Complementary

Split-complementary colors differ from the complementary color scheme. The scheme consists of three colors, the original color and two neighbors of the complement color.



10728943



14331776



6079709

Square

The Square scheme is like the rectangle color scheme, but the four colors are evenly spaced on the color wheel.



14331776



8242596



7913197



15049673

Rectangle

The Rectangle color scheme consists of four colors that form a rectangle on the color wheel.



14331776



11189893



7913197



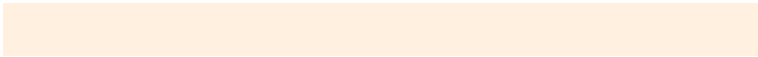
12496615

Sweetspot

The Sweet Spot groups the original color and five complimentary colors.



14331776



16773344



14319787



8419182



0



8421504

Same Dimension

The Same Dimension uses a secret algorithm to generate beautiful new colors.



14331776



16761472



14277248



7235683



11361024



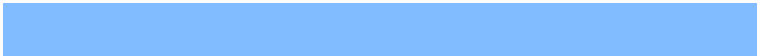
3020800

Inverse Universe

The Inverse Universe completely reimagines the original color for something new.



8432602



8436991



852666



6514798



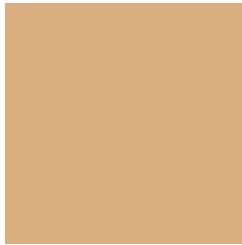
21421



5678

Previews

White Background



This preview shows how the Decimal color 14331776 looks on a white background.

Color Contrast Check

Large Text (above 18pt) WCAG AA × Fail

Any Text WCAG AA × Fail

Large Text (above 18pt) WCAG AAA × Fail

Any Text WCAG AAA × Fail

Black Background



This preview shows how the Decimal color 14331776 looks on a black background.

Color Contrast Check

Large Text (above 18pt) WCAG AA ✓ Pass

Any Text WCAG AA ✓ Pass

Large Text (above 18pt) WCAG AAA ✓ Pass

Any Text WCAG AAA ✓ Pass

If you want to check with other color combinations, try the [Color Contrast Checker](#).

Decimal 14331776 Background



This preview shows how black text looks on a background with the Decimal color 14331776.




This preview shows how white text looks on a background with the Decimal color 14331776.

Color Blindness Simulation

Color vision deficiency is a very complex topic, and I could not describe the different causes any better than Wikipedia does, so if you want to learn more, you should check out their [article about color blindness](#).

Dichromacy





Tritanopia
14657717

Trichromacy



Original Color
14331776

Protanomaly
13481090

Deuteranomaly
14331776

Tritanomaly
14527394

Monochromacy



Original Color
14331776

Achromatopsia
11974326

Achromatomaly
12825506

CSS Examples

Text

The CSS property to change the color of the text to Decimal 14331776 is called "color". The color property can be set on classes, ids or directly on the HTML element.

This example shows how text in the color #DAAF80 looks like.

```
.text, #text, p{  
    color:#DAAF80  
}
```

If you want to add a text shadow in that color use the text-shadow property, you can generate a text shadow directly with our [CSS Text Shadow Generator](#).

Here you see how black text with a 4 pixel #DAAF80 colored shadow looks like.

```
.shadow{ text-shadow: 4px 4px 2px #DAAF80
}
```

Border

The CSS property to change the border of an element to Decimal 14331776 is called "border". The border property can be set on classes, ids or directly on the HTML element.

This example shows the color as border, it can be applied via the CSS property "border" or "border-color".

```
.border, #border, table{ border:4px solid
#DAAF80 }
```

If only the border color should be changed use the property `border-color`.

```
.border{ border-color:#DAAF80 }
```

If you want to add a box shadow in that color use:

Here you see how a box with a 4 pixel #DAAF80 colored shadow looks like.

```
.boxshadow{ -moz-box-shadow:4px 4px 4px  
4px #DAAF80; -webkit-box-shadow:4px 4px  
4px 4px #DAAF80; box-shadow:4px 4px 4px  
4px #DAAF80 }
```

Background

The CSS property to change the background color of an element to Decimal 14331776 is called "background". The background property can be set on classes, ids or directly on the HTML element.

```
.background, #background, body{  
background:#DAAF80 }
```

If only the background color should be changed can be used:

```
.background{ background-color:#DAAF80 }
```

This example shows the color as background, it is applied via the CSS property "background".

To optimize and compress your CSS code, you can use our [online CSS compressor and optimizer](#) based on csstidy. If you want to create a linear or radial gradient as background or border, check our [CSS Gradient Generator](#).

Hey! You found this booklet interesting? Support Converting Colors with the new Membership Option!

The pro membership hides all ads, plus gives you double the colors in the color bucket, and more awesome pro features!

[Learn more, Memberships starting at \\$2.50/m!](#)

**Follow me
on Twitter!**

@ConvertingColor