

# Converting Colors

Decimal(14332854)

Have a look what the booklet for  
Decimal(14332854) contains.

<b>Decimal(14332854)</b> .....	3
<i><b>Conversions</b></i> .....	4
<i><b>Details</b></i> .....	6
<i><b>Harmonies</b></i> .....	11
<i><b>Previews</b></i> .....	23
<i><b>Color Blindness Simulation</b></i> .....	26
<i><b>CSS Examples</b></i> .....	29

# **Color**

**Decimal(14332854)**

# Conversions

## Conversions Part 1

Format	Color
Hex	DAB3B6
RGB	218, 179, 182
RGB Percent	85%, 70%, 71%
CMY	0.1451, 0.2980, 0.2863
CMYK	0.00, 0.18, 0.17, 0.15
HSL	355°, 35%, 78%
HSV	355°, 18%, 85%
XYZ	53.4770, 50.5230, 51.1893
YIQ	191.0030, 22.2810, 9.2010

# Conversions

## Conversions Part 2

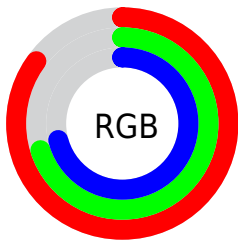
Format	Color
R <sub>Y</sub> B	218, 179, 182
Decimal	14332854
CIE Lab	76.39, 14.55, 3.78
CIE LCh	76, 15.028, 14.559
Yxy	50.5230, 0.3446, 0.3256
Android (android.graphics.Color)	4292522934 (0xFFDAB3B6)
YUV	191.0030, -4.4385, 23.6764
Hunter-Lab	71.0796, 9.9061, 7.0568

# Details

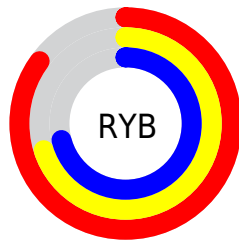
The Decimal color **14332854** is a light color, and the websafe version is hex **CC9999**. A complement of this color would be **11786967**, and the grayscale version is **12566463**.

A 20% lighter version of the original color is **16772078**, and **10714753** is the 20% darker color. If you saturate the color by 10%, you get **14327202**, and if you desaturate by 10%, it is **14338506**.

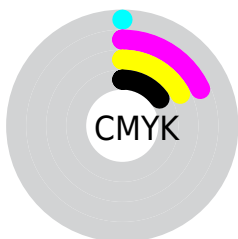
# Distribution



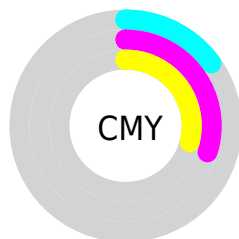
- Red (85%)
- Green (70%)
- Blue (71%)



- Red (85%)
- Yellow (70%)
- Blue (71%)



- Cyan (0%)
- Magenta (18%)
- Yellow (17%)
- Black (15%)



- Cyan (15%)
- Magenta (30%)
- Yellow (29%)

# Brightness & Saturation Gradients

These gradients show how the Decimal color 14332854 changes by changing the brightness by 10 percent. The first figure shows a shift by +10% for each color and the second figure -10%.

Similar to the brightness gradients but the following saturation gradients show a change of the Decimal color 14332854 by changing the saturation by 10% instead.



14332854

14332854

16777215

12490907

16772078

10714753

8938856

7228752

5584441

4005924

2558734

0

14332854

14332854

 14327202

 14338506

 14321550

 14344158

 14316154

 14349554

 14310502

 14352383

 14304849

 14299197

 14293545

 14288149

 14286865

# Harmonies

## Analogous

The Analogous color harmony consists of three colors that are next to each other on the color wheel.



13939908



14332854



14202282

# Triad

The Triadic color harmony groups three colors that are evenly spaced from another and form a triangle on the color wheel.



14332854



11584168



10862807

# Complementary

The Complementary color scheme is a pair of colors which are on the opposite of each other on the color wheel.



14332854



11786967

# Split Complementary

Split-complementary colors differ from the complementary color scheme. The scheme consists of three colors, the original color and two neighbors of the complement color.



10142671



14332854



10667189

# Square

The Square scheme is like the rectangle color scheme, but the four colors are evenly spaced on the color wheel.



14332854



12631714



10143171



11975639

# Rectangle

The Rectangle color scheme consists of four colors that form a rectangle on the color wheel.



14332854



13809828



10143171



10600917



# Sweetspot

The Sweet Spot groups the original color and five complimentary colors.



14332854



16773875



14136282



8419448



0



8421504



# Same Dimension

The Same Dimension uses a secret algorithm to generate beautiful new colors.



14332854



16763342



14336947



7234404



11337741



3014660



# Inverse Universe

The Inverse Universe completely reimagines the original color for something new.



14332854



16763342



11782874



7234404



11337741



3014660



# Previews

## White Background



This preview shows how the Decimal color 14332854 looks on a white background.

## Color Contrast Check

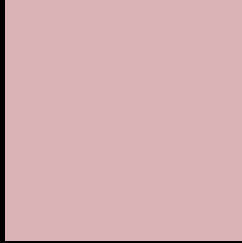
Large Text (above 18pt) WCAG AA × Fail

Any Text WCAG AA × Fail

Large Text (above 18pt) WCAG AAA × Fail

Any Text WCAG AAA × Fail

# Black Background



This preview shows how the Decimal color 14332854 looks on a black background.

## Color Contrast Check

Large Text (above 18pt) WCAG AA ✓ Pass

Any Text WCAG AA ✓ Pass

Large Text (above 18pt) WCAG AAA ✓ Pass

Any Text WCAG AAA ✓ Pass

If you want to check with other color combinations, try the [Color Contrast Checker](#).



## Decimal 14332854 Background



This preview shows how black text looks on a background with the Decimal color 14332854.




This preview shows how white text looks on a background with the Decimal color 14332854.

# Color Blindness Simulation

Color vision deficiency is a very complex topic, and I could not describe the different causes any better than Wikipedia does, so if you want to learn more, you should check out their [article about color blindness](#).

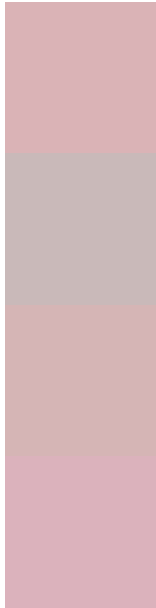
## Dichromacy





**Tritanopia**  
14398143

# Trichromacy



**Original Color**  
14332854

**Protanomaly**  
13220281

**Deuteranomaly**  
14005685

**Tritanomaly**  
14398140

# Monochromacy



**Original Color**  
14332854

**Achromatopsia**  
12566463

**Achromatomaly**  
13220796

# CSS Examples

## Text

The CSS property to change the color of the text to Decimal 14332854 is called "color". The color property can be set on classes, ids or directly on the HTML element.

This example shows how text in the color #DAB3B6 looks like.

```
.text, #text, p{  
  color:#DAB3B6  
}
```

If you want to add a text shadow in that color use the text-shadow property, you can generate a text shadow directly with our [CSS Text Shadow Generator](#).

Here you see how black text with a 4 pixel #DAB3B6 colored shadow looks like.

```
.shadow{ text-shadow: 4px 4px 2px #DAB3B6  
}
```

## Border

The CSS property to change the border of an element to Decimal 14332854 is called "border". The border property can be set on classes, ids or directly on the HTML element.

This example shows the color as border, it can be applied via the CSS property "border" or "border-color".

```
.border, #border, table{ border:4px solid  
#DAB3B6 }
```

If only the border color should be changed use the property `border-color`.

```
.border{ border-color:#DAB3B6 }
```

If you want to add a box shadow in that color use:

Here you see how a box with a 4 pixel #DAB3B6 colored shadow looks like.

```
.boxshadow{ -moz-box-shadow:4px 4px 4px  
4px #DAB3B6; -webkit-box-shadow:4px 4px  
4px 4px #DAB3B6; box-shadow:4px 4px 4px  
4px #DAB3B6 }
```

# Background

The CSS property to change the background color of an element to Decimal 14332854 is called "background". The background property can be set on classes, ids or directly on the HTML element.

```
.background, #background, body{  
background:#DAB3B6 }
```

If only the background color should be changed can be used:

```
.background{ background-color:#DAB3B6 }
```

This example shows the color as background, it is applied via the CSS property "background".

To optimize and compress your CSS code, you can use our [online CSS compressor and optimizer](#) based on csstidy. If you want to create a linear or radial gradient as background or border, check our [CSS Gradient Generator](#).



Hey! You found this booklet interesting? Support Converting Colors with the new Membership Option!

The pro membership hides all ads, plus gives you double the colors in the color bucket, and more awesome pro features!

**[Learn more, Memberships starting at \\$2.50/m!](#)**

**Follow me  
on Twitter!**

@ConvertingColor