

Converting Colors

Decimal(14333623)

Have a look what the booklet for
Decimal(14333623) contains.

Decimal(14333623)	3
<i>Conversions</i>	4
<i>Details</i>	6
<i>Harmonies</i>	11
<i>Previews</i>	23
<i>Color Blindness Simulation</i>	26
<i>CSS Examples</i>	29

Color

Decimal(14333623)

Conversions

Conversions Part 1

Format	Color
Hex	DAB6B7
RGB	218, 182, 183
RGB Percent	85%, 71%, 72%
CMY	0.1451, 0.2863, 0.2824
CMYK	0.00, 0.17, 0.16, 0.15
HSL	358°, 33%, 78%
HSV	358°, 17%, 85%
XYZ	54.1886, 51.7802, 51.9383
YIQ	192.8780, 21.1350, 7.9430

Conversions

Conversions Part 2

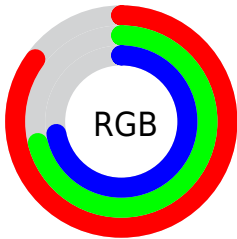
Format	Color
R _Y B	218, 182, 183
Decimal	14333623
CIE Lab	77.15, 13.09, 4.33
CIE LCh	77, 13.791, 18.314
Yxy	51.7802, 0.3432, 0.3279
Android (android.graphics.Color)	4292523703 (0xFFDAB6B7)
YUV	192.8780, -4.8699, 22.0320
Hunter-Lab	71.9585, 8.4929, 7.5765

Details

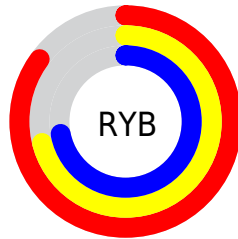
The Decimal color **14333623** is a light color, and the websafe version is hex **FFCCCC**. A complement of this color would be **11983577**, and the grayscale version is **12698049**.

A 20% lighter version of the original color is **16772847**, and **10715522** is the 20% darker color. If you saturate the color by 10%, you get **14327970**, and if you desaturate by 10%, it is **14339276**.

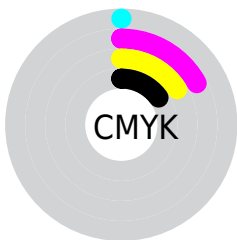
Distribution



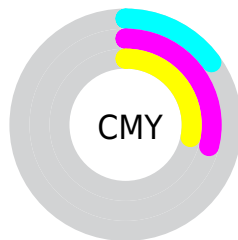
- Red (85%)
- Green (71%)
- Blue (72%)



- Red (85%)
- Yellow (71%)
- Blue (72%)



- Cyan (0%)
- Magenta (17%)
- Yellow (16%)
- Black (15%)



- Cyan (15%)
- Magenta (29%)
- Yellow (28%)

Brightness & Saturation Gradients

These gradients show how the Decimal color 14333623 changes by changing the brightness by 10 percent. The first figure shows a shift by +10% for each color and the second figure -10%.

Similar to the brightness gradients but the following saturation gradients show a change of the Decimal color 14333623 by changing the saturation by 10% instead.

 14333623

 14333623

16777215

 12491676

 16772847

 10715522

 8939625

 7229521

 5650746

 4072228

 2559503

 131072

 0

 14333623

 14333623

 14327970

 14339276

 14322317

 14344929

 14316919

 14350327

 14311266

 14352383

 14305613

 14299960

 14294307

 14288909

 14286854

Harmonies

Analogous

The Analogous color harmony consists of three colors that are next to each other on the color wheel.



14071492



14333623



14137516

Triad

The Triadic color harmony groups three colors that are evenly spaced from another and form a triangle on the color wheel.



14333623



11715757



11256279

Complementary

The Complementary color scheme is a pair of colors which are on the opposite of each other on the color wheel.



14333623



11983577

Split Complementary

Split-complementary colors differ from the complementary color scheme. The scheme consists of three colors, the original color and two neighbors of the complement color.



10536145



14333623



10864313

Square

The Square scheme is like the rectangle color scheme, but the four colors are evenly spaced on the color wheel.



14333623



12632230



10405574



12303831

Rectangle

The Rectangle color scheme consists of four colors that form a rectangle on the color wheel.



14333623



13810599



10405574



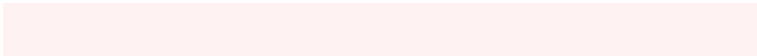
10994390

Sweetspot

The Sweet Spot groups the original color and five complimentary colors.



14333623



16773875



14268122



8419448



0



8421504

Same Dimension

The Same Dimension uses a secret algorithm to generate beautiful new colors.



14333623



16764109



14337974



7234403



11337733



3014657

Inverse Universe

The Inverse Universe completely reimagines the original color for something new.



14333623



16764109



11979226



7234403



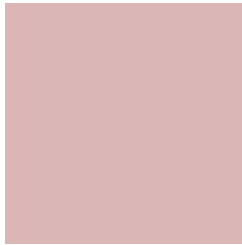
11337733



3014657

Previews

White Background



This preview shows how the Decimal color 14333623 looks on a white background.

Color Contrast Check

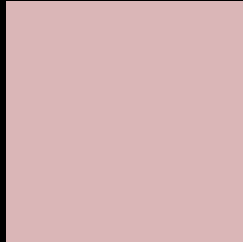
Large Text (above 18pt) WCAG AA × Fail

Any Text WCAG AA × Fail

Large Text (above 18pt) WCAG AAA × Fail

Any Text WCAG AAA × Fail

Black Background



This preview shows how the Decimal color 14333623 looks on a black background.

Color Contrast Check

Large Text (above 18pt) WCAG AA ✓ Pass

Any Text WCAG AA ✓ Pass

Large Text (above 18pt) WCAG AAA ✓ Pass

Any Text WCAG AAA ✓ Pass

If you want to check with other color combinations, try the [Color Contrast Checker](#).

Decimal 14333623 Background



This preview shows how black text looks on a background with the Decimal color 14333623.




This preview shows how white text looks on a background with the Decimal color 14333623.

Color Blindness Simulation

Color vision deficiency is a very complex topic, and I could not describe the different causes any better than Wikipedia does, so if you want to learn more, you should check out their [article about color blindness](#).

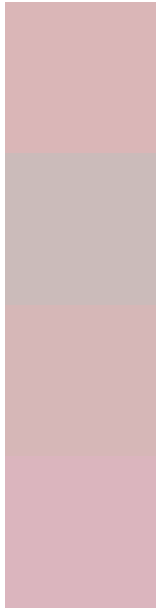
Dichromacy





Tritanopia
14398658

Trichromacy



Original Color
14333623

Protanomaly
13351866

Deuteranomaly
14071735

Tritanomaly
14398910

Monochromacy



Original Color
14333623

Achromatopsia
12698049

Achromatomaly
13286845

CSS Examples

Text

The CSS property to change the color of the text to Decimal 14333623 is called "color". The color property can be set on classes, ids or directly on the HTML element.

This example shows how text in the color #DAB6B7 looks like.

```
.text, #text, p{  
    color:#DAB6B7  
}
```

If you want to add a text shadow in that color use the text-shadow property, you can generate a text shadow directly with our [CSS Text Shadow Generator](#).

Here you see how black text with a 4 pixel #DAB6B7 colored shadow looks like.

```
.shadow{ text-shadow: 4px 4px 2px #DAB6B7  
}
```

Border

The CSS property to change the border of an element to Decimal 14333623 is called "border". The border property can be set on classes, ids or directly on the HTML element.

This example shows the color as border, it can be applied via the CSS property "border" or "border-color".

```
.border, #border, table{ border:4px solid  
#DAB6B7 }
```

If only the border color should be changed use the property `border-color`.

```
.border{ border-color:#DAB6B7 }
```

If you want to add a box shadow in that color use:

Here you see how a box with a 4 pixel #DAB6B7 colored shadow looks like.

```
.boxshadow{ -moz-box-shadow:4px 4px 4px  
4px #DAB6B7; -webkit-box-shadow:4px 4px  
4px 4px #DAB6B7; box-shadow:4px 4px 4px  
4px #DAB6B7 }
```

Background

The CSS property to change the background color of an element to Decimal 14333623 is called "background". The background property can be set on classes, ids or directly on the HTML element.

```
.background, #background, body{  
background:#DAB6B7 }
```

If only the background color should be changed can be used:

```
.background{ background-color:#DAB6B7 }
```

This example shows the color as background, it is applied via the CSS property "background".

To optimize and compress your CSS code, you can use our [online CSS compressor and optimizer](#) based on csstidy. If you want to create a linear or radial gradient as background or border, check our [CSS Gradient Generator](#).

Hey! You found this booklet interesting? Support Converting Colors with the new Membership Option!

The pro membership hides all ads, plus gives you double the colors in the color bucket, and more awesome pro features!

[Learn more, Memberships starting at \\$2.50/m!](#)

**Follow me
on Twitter!**

@ConvertingColor