

Converting Colors

Decimal(14334099)

Have a look what the booklet for
Decimal(14334099) contains.

Decimal(14334099)	3
<i>Conversions</i>	4
<i>Details</i>	6
<i>Harmonies</i>	11
<i>Previews</i>	23
<i>Color Blindness Simulation</i>	26
<i>CSS Examples</i>	29

Color

Decimal(14334099)

Conversions

Conversions Part 1

Format	Color
Hex	DAB893
RGB	218, 184, 147
RGB Percent	85%, 72%, 58%
CMY	0.1451, 0.2784, 0.4235
CMYK	0.00, 0.16, 0.33, 0.15
HSL	31°, 49%, 72%
HSV	31°, 33%, 85%
XYZ	51.3204, 51.2930, 34.7994
YIQ	189.9480, 32.1410, -4.2990

Conversions

Conversions Part 2

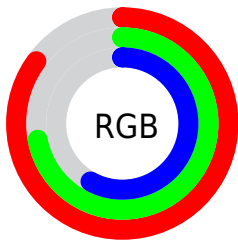
Format	Color
R _Y B	212, 218, 147
Decimal	14334099
CIE Lab	76.86, 6.91, 23.36
CIE LCh	77, 24.355, 73.524
Yxy	51.2930, 0.3735, 0.3733
Android (android.graphics.Color)	4292524179 (0xFFDAB893)
YUV	189.9480, -21.1734, 24.6016
Hunter-Lab	71.6191, 2.5750, 21.3246

Details

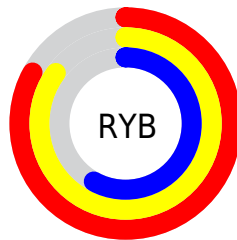
The Decimal color **14334099** is a light color, and the websafe version is hex **FFCC99**. A complement of this color would be **9680346**, and the grayscale version is **12500670**.

A 20% lighter version of the original color is **16773321**, and **10650464** is the 20% darker color. If you saturate the color by 10%, you get **14331517**, and if you desaturate by 10%, it is **14336681**.

Distribution



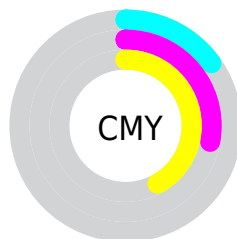
- Red (85%)
- Green (72%)
- Blue (58%)



- Red (83%)
- Yellow (85%)
- Blue (58%)



- Cyan (0%)
- Magenta (16%)
- Yellow (33%)
- Black (15%)



- Cyan (15%)
- Magenta (28%)
- Yellow (42%)

Brightness & Saturation Gradients

These gradients show how the Decimal color 14334099 changes by changing the brightness by 10 percent. The first figure shows a shift by +10% for each color and the second figure -10%.

Similar to the brightness gradients but the following saturation gradients show a change of the Decimal color 14334099 by changing the saturation by 10% instead.

 14334099

 14334099

16777215

 12492153

 16773321

 10650464

 16777189

 8874568

 7164465

 5454619

 3876099

 2298112

 0

 14334099

 14334099

 14331517

 14336681

 14328679

 14339519

 14326098

 14342100

 14323260

 14344938

 14320678

 14347519

 14317840

 14350335

 14316032

 14352383

Harmonies

Analogous

The Analogous color harmony consists of three colors that are next to each other on the color wheel.



15249824



14334099



12894098

Triad

The Triadic color harmony groups three colors that are evenly spaced from another and form a triangle on the color wheel.



14334099



8506311



13546974

Complementary

The Complementary color scheme is a pair of colors which are on the opposite of each other on the color wheel.



14334099



9680346

Split Complementary

Split-complementary colors differ from the complementary color scheme. The scheme consists of three colors, the original color and two neighbors of the complement color.



11648233



14334099



8440284

Square

The Square scheme is like the rectangle color scheme, but the four colors are evenly spaced on the color wheel.



14334099



9620144



9683944



14921675

Rectangle

The Rectangle color scheme consists of four colors that form a rectangle on the color wheel.



14334099



11781272



9683944



12957667

Sweetspot

The Sweet Spot groups the original color and five complimentary colors.



14334099



16774118



14324661



8419440



0



8421504

Same Dimension

The Same Dimension uses a secret algorithm to generate beautiful new colors.



14334099



16764828



14277267



7235683



11360768



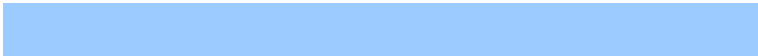
3020800

Inverse Universe

The Inverse Universe completely reimagines the original color for something new.



9680346



10275839



9737178



6514798



21421



5678

Previews

White Background



This preview shows how the Decimal color 14334099 looks on a white background.

Color Contrast Check

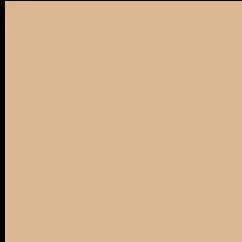
Large Text (above 18pt) WCAG AA × Fail

Any Text WCAG AA × Fail

Large Text (above 18pt) WCAG AAA × Fail

Any Text WCAG AAA × Fail

Black Background



This preview shows how the Decimal color 14334099 looks on a black background.

Color Contrast Check

Large Text (above 18pt) WCAG AA ✓ Pass

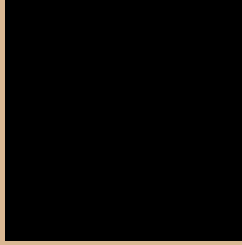
Any Text WCAG AA ✓ Pass

Large Text (above 18pt) WCAG AAA ✓ Pass

Any Text WCAG AAA ✓ Pass

If you want to check with other color combinations, try the [Color Contrast Checker](#).

Decimal 14334099 Background



This preview shows how black text looks on a background with the Decimal color 14334099.



This preview shows how white text looks on a background with the Decimal color 14334099.

Color Blindness Simulation

Color vision deficiency is a very complex topic, and I could not describe the different causes any better than Wikipedia does, so if you want to learn more, you should check out their [article about color blindness](#).


Dichromacy



Original Color
14334099

Protanopia
13287062

Deuteranopia
14595731



Tritanopia
14660288

Trichromacy



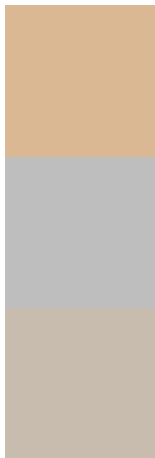
Original Color
14334099

Protanomaly
13679765

Deuteranomaly
14530451

Tritanomaly
14529712

Monochromacy



Original Color
14334099

Achromatopsia
12500670

Achromatomaly
13155502

CSS Examples

Text

The CSS property to change the color of the text to Decimal 14334099 is called "color". The color property can be set on classes, ids or directly on the HTML element.

This example shows how text in the color #DAB893 looks like.

```
.text, #text, p{  
    color:#DAB893  
}
```

If you want to add a text shadow in that color use the text-shadow property, you can generate a text shadow directly with our [CSS Text Shadow Generator](#).

Here you see how black text with a 4 pixel #DAB893 colored shadow looks like.

```
.shadow{ text-shadow: 4px 4px 2px #DAB893
}
```

Border

The CSS property to change the border of an element to Decimal 14334099 is called "border". The border property can be set on classes, ids or directly on the HTML element.

This example shows the color as border, it can be applied via the CSS property "border" or "border-color".

```
.border, #border, table{ border:4px solid
#DAB893 }
```

If only the border color should be changed use the property `border-color`.

```
.border{ border-color:#DAB893 }
```

If you want to add a box shadow in that color use:

Here you see how a box with a 4 pixel #DAB893 colored shadow looks like.

```
.boxshadow{ -moz-box-shadow:4px 4px 4px  
4px #DAB893; -webkit-box-shadow:4px 4px  
4px 4px #DAB893; box-shadow:4px 4px 4px  
4px #DAB893 }
```

Background

The CSS property to change the background color of an element to Decimal 14334099 is called "background". The background property can be set on classes, ids or directly on the HTML element.

```
.background, #background, body{  
background:#DAB893 }
```

If only the background color should be changed can be used:

```
.background{ background-color:#DAB893 }
```

This example shows the color as background, it is applied via the CSS property "background".

To optimize and compress your CSS code, you can use our [online CSS compressor and optimizer](#) based on csstidy. If you want to create a linear or radial gradient as background or border, check our [CSS Gradient Generator](#).

Hey! You found this booklet interesting? Support Converting Colors with the new Membership Option!

The pro membership hides all ads, plus gives you double the colors in the color bucket, and more awesome pro features!

[Learn more, Memberships starting at \\$2.50/m!](#)

**Follow me
on Twitter!**

@ConvertingColor