

# Converting Colors

Decimal(14334120)

Have a look what the booklet for  
Decimal(14334120) contains.

<b>Decimal(14334120)</b> .....	3
<i><b>Conversions</b></i> .....	4
<i><b>Details</b></i> .....	6
<i><b>Harmonies</b></i> .....	11
<i><b>Previews</b></i> .....	23
<i><b>Color Blindness Simulation</b></i> .....	26
<i><b>CSS Examples</b></i> .....	29

# **Color**

**Decimal(14334120)**

# Conversions

## Conversions Part 1

Format	Color
Hex	DAB8A8
RGB	218, 184, 168
RGB Percent	85%, 72%, 66%
CMY	0.1451, 0.2784, 0.3412
CMYK	0.00, 0.16, 0.23, 0.15
HSL	19°, 40%, 76%
HSV	19°, 23%, 85%
XYZ	53.1218, 52.0136, 44.2856
YIQ	192.3420, 25.4000, 2.2320

# Conversions

## Conversions Part 2

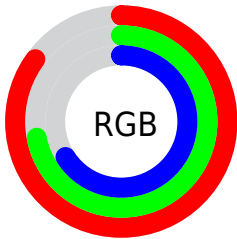
Format	Color
<a href="#">RYB</a>	<a href="#">218, 192, 168</a>
Decimal	<a href="#">14334120</a>
CIELab	<a href="#">77.29, 9.75, 12.66</a>
CIElCh	<a href="#">77, 15.980, 52.396</a>
Yxy	<a href="#">52.0136, 0.3555, 0.3481</a>
Android (android.graphics.Color)	<a href="#">4292524200 (0xFFDAB8A8)</a>
YUV	<a href="#">192.3420, -12.0006, 22.5021</a>
Hunter-Lab	<a href="#">72.1204, 5.2672, 14.0772</a>

# Details

The Decimal color **14334120** is a light color, and the websafe version is hex **FFCCCC**. A complement of this color would be **11061978**, and the grayscale version is **12632256**.

A 20% lighter version of the original color is **16773343**, and **10650484** is the 20% darker color. If you saturate the color by 10%, you get **14330258**, and if you desaturate by 10%, it is **14337982**.

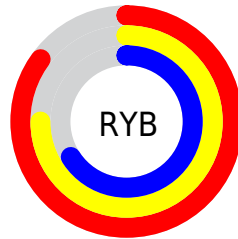
# Distribution



Red (85%)

Green (72%)

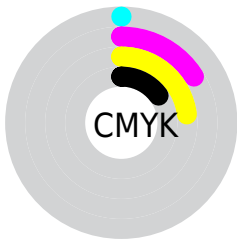
Blue (66%)



Red (85%)

Yellow (75%)

Blue (66%)

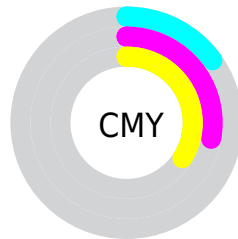


Cyan (0%)

Magenta (16%)

Yellow (23%)

Black (15%)



Cyan (15%)

Magenta (28%)

Yellow (34%)

# Brightness & Saturation Gradients

These gradients show how the Decimal color 14334120 changes by changing the brightness by 10 percent. The first figure shows a shift by +10% for each color and the second figure -10%.

Similar to the brightness gradients but the following saturation gradients show a change of the Decimal color 14334120 by changing the saturation by 10% instead.



 14334120

 14334120

16777215

 12492174

 16773343

 10650484

16777212

 8940123

 7230020

 5585710

 4007193

 2560000

 0

 14334120

 14334120

 14330258

 14337982

 14326396

 14341844

 14322791

 14345449

 14318929

 14349311

 14315067

 14352383

 14311205

 14307343

 14304768

# Harmonies

## Analogous

The Analogous color harmony consists of three colors that are next to each other on the color wheel.



14595508



14334120



13614498

# Triad

The Triadic color harmony groups three colors that are evenly spaced from another and form a triangle on the color wheel.



14334120



10536890



12434650

# Complementary

The Complementary color scheme is a pair of colors which are on the opposite of each other on the color wheel.



14334120



11061978

# Split Complementary

Split-complementary colors differ from the complementary color scheme. The scheme consists of three colors, the original color and two neighbors of the complement color.



11190748



14334120



10078154

# Square

The Square scheme is like the rectangle color scheme, but the four colors are evenly spaced on the color wheel.



14334120



11453868



10274262



13613265

# Rectangle

The Rectangle color scheme consists of four colors that form a rectangle on the color wheel.



14334120



12894370



10274262



12041948

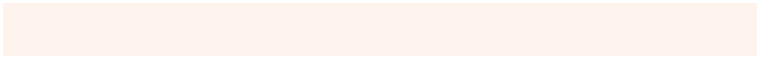


# Sweetspot

The Sweet Spot groups the original color and five complimentary colors.



14334120



16774125



14330058



8419701



0



8421504



# Same Dimension

The Same Dimension uses a secret algorithm to generate beautiful new colors.



14334120



16764600



14340520



7235171



11351808



3018496

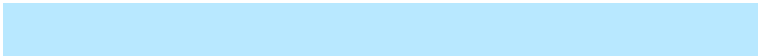


# Inverse Universe

The Inverse Universe completely reimagines the original color for something new.



11061978



12118271



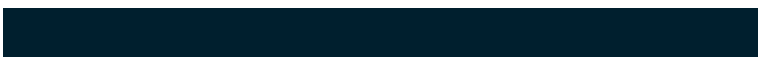
11055578



6515310



30381



7982



# Previews

## White Background



This preview shows how the Decimal color 14334120 looks on a white background.

## Color Contrast Check

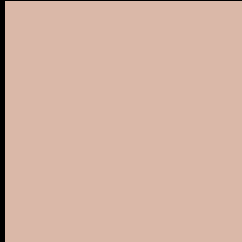
Large Text (above 18pt) WCAG AA × Fail

Any Text WCAG AA × Fail

Large Text (above 18pt) WCAG AAA × Fail

Any Text WCAG AAA × Fail

# Black Background



This preview shows how the Decimal color 14334120 looks on a black background.

## Color Contrast Check

Large Text (above 18pt) WCAG AA ✓ Pass

Any Text WCAG AA ✓ Pass

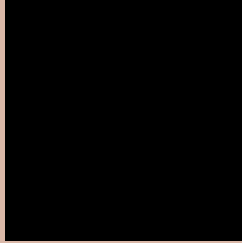
Large Text (above 18pt) WCAG AAA ✓ Pass

Any Text WCAG AAA ✓ Pass

If you want to check with other color combinations, try the [Color Contrast Checker](#).



## Decimal 14334120 Background



This preview shows how black text looks on a background with the Decimal color 14334120.




This preview shows how white text looks on a background with the Decimal color 14334120.

# Color Blindness Simulation

Color vision deficiency is a very complex topic, and I could not describe the different causes any better than Wikipedia does, so if you want to learn more, you should check out their [article about color blindness](#).

## Dichromacy





**Tritanopia**  
14529730

# Trichromacy



**Original Color**  
14334120

**Protanomaly**  
13548714

**Deuteranomaly**  
14334120

**Tritanomaly**  
14464441

# Monochromacy



**Original Color**  
14334120

**Achromatopsia**  
12632256

**Achromatomaly**  
13221303

# CSS Examples

## Text

The CSS property to change the color of the text to Decimal 14334120 is called "color". The color property can be set on classes, ids or directly on the HTML element.

This example shows how text in the color #DAB8A8 looks like.

```
.text, #text, p{  
    color:#DAB8A8  
}
```

If you want to add a text shadow in that color use the text-shadow property, you can generate a text shadow directly with our [CSS Text Shadow Generator](#).

Here you see how black text with a 4 pixel #DAB8A8 colored shadow looks like.

```
.shadow{ text-shadow: 4px 4px 2px #DAB8A8
}
```

## Border

The CSS property to change the border of an element to Decimal 14334120 is called "border". The border property can be set on classes, ids or directly on the HTML element.

This example shows the color as border, it can be applied via the CSS property "border" or "border-color".

```
.border, #border, table{ border:4px solid
#DAB8A8 }
```

If only the border color should be changed use the property `border-color`.

```
.border{ border-color:#DAB8A8 }
```

If you want to add a box shadow in that color use:

Here you see how a box with a 4 pixel #DAB8A8 colored shadow looks like.

```
.boxshadow{ -moz-box-shadow:4px 4px 4px  
4px #DAB8A8; -webkit-box-shadow:4px 4px  
4px 4px #DAB8A8; box-shadow:4px 4px 4px  
4px #DAB8A8 }
```

# Background

The CSS property to change the background color of an element to Decimal 14334120 is called "background". The background property can be set on classes, ids or directly on the HTML element.

```
.background, #background, body{  
background:#DAB8A8 }
```

If only the background color should be changed can be used:

```
.background{ background-color:#DAB8A8 }
```

This example shows the color as background, it is applied via the CSS property "background".

To optimize and compress your CSS code, you can use our [online CSS compressor and optimizer](#) based on csstidy. If you want to create a linear or radial gradient as background or border, check our [CSS Gradient Generator](#).



Hey! You found this booklet interesting? Support Converting Colors with the new Membership Option!

The pro membership hides all ads, plus gives you double the colors in the color bucket, and more awesome pro features!

**[Learn more, Memberships starting at \\$2.50/m!](#)**

**Follow me  
on Twitter!**

@ConvertingColor