

Converting Colors

Decimal(14334357)

Have a look what the booklet for
Decimal(14334357) contains.

Decimal(14334357)	3
<i>Conversions</i>	4
<i>Details</i>	6
<i>Harmonies</i>	11
<i>Previews</i>	23
<i>Color Blindness Simulation</i>	26
<i>CSS Examples</i>	29

Color

Decimal(14334357)

Conversions

Conversions Part 1

Format	Color
Hex	DAB995
RGB	218, 185, 149
RGB Percent	85%, 73%, 58%
CMY	0.1451, 0.2745, 0.4157
CMYK	0.00, 0.15, 0.32, 0.15
HSL	31°, 48%, 72%
HSV	31°, 32%, 85%
XYZ	51.6872, 51.7733, 35.7028
YIQ	190.7630, 31.2240, -4.2000

Conversions

Conversions Part 2

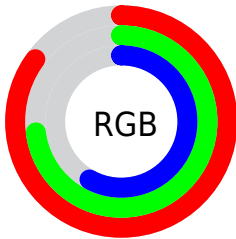
Format	Color
R _Y B	212, 218, 149
Decimal	14334357
CIE Lab	77.15, 6.63, 22.68
CIE LCh	77, 23.629, 73.705
Yxy	51.7733, 0.3714, 0.3720
Android (android.graphics.Color)	4292524437 (0xFFDAB995)
YUV	190.7630, -20.5892, 23.8868
Hunter-Lab	71.9536, 2.3049, 20.9483

Details

The Decimal color **14334357** is a light color, and the websafe version is hex **FFCC99**. A complement of this color would be **9811674**, and the grayscale version is **12566463**.

A 20% lighter version of the original color is **16773579**, and **10650722** is the 20% darker color. If you saturate the color by 10%, you get **14331775**, and if you desaturate by 10%, it is **14336939**.

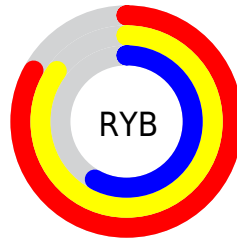
Distribution



Red (85%)

Green (73%)

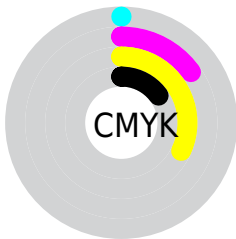
Blue (58%)



Red (83%)

Yellow (85%)

Blue (58%)

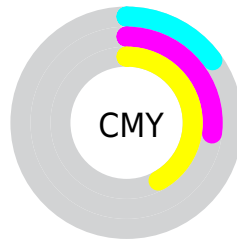


Cyan (0%)

Magenta (15%)

Yellow (32%)

Black (15%)



Cyan (15%)

Magenta (27%)

Yellow (42%)

Brightness & Saturation Gradients

These gradients show how the Decimal color 14334357 changes by changing the brightness by 10 percent. The first figure shows a shift by +10% for each color and the second figure -10%.

Similar to the brightness gradients but the following saturation gradients show a change of the Decimal color 14334357 by changing the saturation by 10% instead.

 14334357

 14334357

16777215


 12492411

 16773579

 10650722

 16777191

 8874826

 7164723

 5454877

 3876358

 2363904

 0

 14334357

 14334357

 14331775

 14336939

 14328937

 14339777

 14326356

 14342358

 14323518

 14345196

 14320936

 14347775

 14318098

 14350591

 14316032

 14352383

Harmonies

Analogous

The Analogous color harmony consists of three colors that are next to each other on the color wheel.



15250081



14334357



12959892

Triad

The Triadic color harmony groups three colors that are evenly spaced from another and form a triangle on the color wheel.



14334357



8702920



13612766

Complementary

The Complementary color scheme is a pair of colors which are on the opposite of each other on the color wheel.



14334357



9811674

Split Complementary

Split-complementary colors differ from the complementary color scheme. The scheme consists of three colors, the original color and two neighbors of the complement color.



11714025



14334357



8636892

Square

The Square scheme is like the rectangle color scheme, but the four colors are evenly spaced on the color wheel.



14334357



9751218



9880808



14921931

Rectangle

The Rectangle color scheme consists of four colors that form a rectangle on the color wheel.



14334357



11847066



9880808



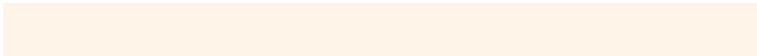
13023459

Sweetspot

The Sweet Spot groups the original color and five complimentary colors.



14334357



16774376



14325174



8419697



0



8421504

Same Dimension

The Same Dimension uses a secret algorithm to generate beautiful new colors.



14334357



16765342



14277269



7235683



11360768



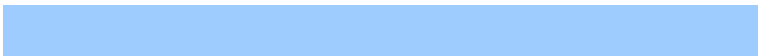
3020800

Inverse Universe

The Inverse Universe completely reimagines the original color for something new.



9811674



10407167



9868762



6514798



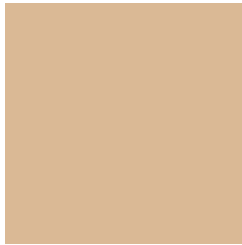
21421



5678

Previews

White Background



This preview shows how the Decimal color 14334357 looks on a white background.

Color Contrast Check

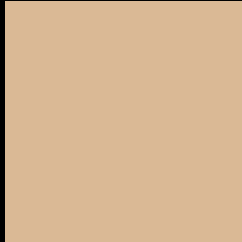
Large Text (above 18pt) WCAG AA × Fail

Any Text WCAG AA × Fail

Large Text (above 18pt) WCAG AAA × Fail

Any Text WCAG AAA × Fail

Black Background



This preview shows how the Decimal color 14334357 looks on a black background.

Color Contrast Check

Large Text (above 18pt) WCAG AA ✓ Pass

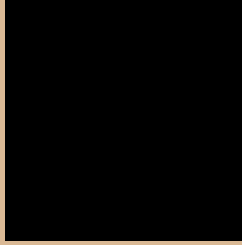
Any Text WCAG AA ✓ Pass

Large Text (above 18pt) WCAG AAA ✓ Pass

Any Text WCAG AAA ✓ Pass

If you want to check with other color combinations, try the [Color Contrast Checker](#).

Decimal 14334357 Background



This preview shows how black text looks on a background with the Decimal color 14334357.




This preview shows how white text looks on a background with the Decimal color 14334357.

Color Blindness Simulation

Color vision deficiency is a very complex topic, and I could not describe the different causes any better than Wikipedia does, so if you want to learn more, you should check out their [article about color blindness](#).

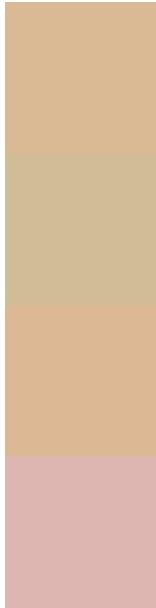
Dichromacy





Tritanopia
14660545

Trichromacy



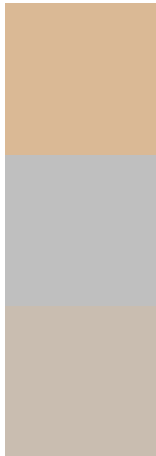
Original Color
14334357

Protanomaly
13679766

Deuteranomaly
14530709

Tritanomaly
14529969

Monochromacy



Original Color
14334357

Achromatopsia
12566463

Achromatomaly
13221296

CSS Examples

Text

The CSS property to change the color of the text to Decimal 14334357 is called "color". The color property can be set on classes, ids or directly on the HTML element.

This example shows how text in the color #DAB995 looks like.

```
.text, #text, p{  
    color:#DAB995  
}
```

If you want to add a text shadow in that color use the text-shadow property, you can generate a text shadow directly with our [CSS Text Shadow Generator](#).

Here you see how black text with a 4 pixel #DAB995 colored shadow looks like.

```
.shadow{ text-shadow: 4px 4px 2px #DAB995
}
```

Border

The CSS property to change the border of an element to Decimal 14334357 is called "border". The border property can be set on classes, ids or directly on the HTML element.

This example shows the color as border, it can be applied via the CSS property "border" or "border-color".

```
.border, #border, table{ border:4px solid
#DAB995 }
```

If only the border color should be changed use the property `border-color`.

```
.border{ border-color:#DAB995 }
```

If you want to add a box shadow in that color use:

Here you see how a box with a 4 pixel #DAB995 colored shadow looks like.

```
.boxshadow{ -moz-box-shadow:4px 4px 4px  
4px #DAB995; -webkit-box-shadow:4px 4px  
4px 4px #DAB995; box-shadow:4px 4px 4px  
4px #DAB995 }
```

Background

The CSS property to change the background color of an element to Decimal 14334357 is called "background". The background property can be set on classes, ids or directly on the HTML element.

```
.background, #background, body{  
background:#DAB995 }
```

If only the background color should be changed can be used:

```
.background{ background-color:#DAB995 }
```

This example shows the color as background, it is applied via the CSS property "background".

To optimize and compress your CSS code, you can use our [online CSS compressor and optimizer](#) based on csstidy. If you want to create a linear or radial gradient as background or border, check our [CSS Gradient Generator](#).

Hey! You found this booklet interesting? Support Converting Colors with the new Membership Option!

The pro membership hides all ads, plus gives you double the colors in the color bucket, and more awesome pro features!

[Learn more, Memberships starting at \\$2.50/m!](#)

**Follow me
on Twitter!**

@ConvertingColor