

Converting Colors

Decimal(14334650)

Have a look what the booklet for
Decimal(14334650) contains.

Decimal(14334650)	3
<i>Conversions</i>	4
<i>Details</i>	6
<i>Harmonies</i>	11
<i>Previews</i>	23
<i>Color Blindness Simulation</i>	26
<i>CSS Examples</i>	29

Color

Decimal(14334650)

Conversions

Conversions Part 1

Format	Color
Hex	DABABA
RGB	218, 186, 186
RGB Percent	85%, 73%, 73%
CMY	0.1451, 0.2706, 0.2706
CMYK	0.00, 0.15, 0.15, 0.15
HSL	0°, 30%, 79%
HSV	0°, 15%, 85%
XYZ	55.3353, 53.5684, 53.8776
YIQ	195.5680, 19.0720, 6.7840

Conversions

Conversions Part 2

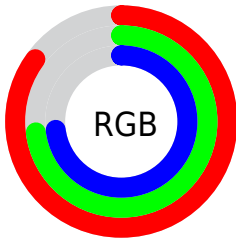
Format	Color
R _Y B	218, 186, 186
Decimal	14334650
CIE Lab	78.21, 11.43, 4.24
CIE LCh	78, 12.188, 20.358
Yxy	53.5684, 0.3399, 0.3291
Android (android.graphics.Color)	4292524730 (0xFFDABABA)
YUV	195.5680, -4.7170, 19.6729
Hunter-Lab	73.1904, 6.8708, 7.5882

Details

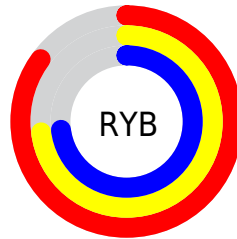
The Decimal color **14334650** is a light color, and the websafe version is hex **FFCCCC**. A complement of this color would be **12245722**, and the grayscale version is **12895428**.

A 20% lighter version of the original color is **16773874**, and **10716549** is the 20% darker color. If you saturate the color by 10%, you get **14328996**, and if you desaturate by 10%, it is **14340304**.

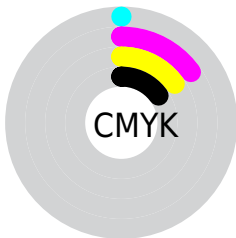
Distribution



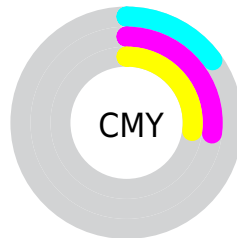
- Red (85%)
- Green (73%)
- Blue (73%)



- Red (85%)
- Yellow (73%)
- Blue (73%)



- Cyan (0%)
- Magenta (15%)
- Yellow (15%)
- Black (15%)



- Cyan (15%)
- Magenta (27%)
- Yellow (27%)

Brightness & Saturation Gradients

These gradients show how the Decimal color 14334650 changes by changing the brightness by 10 percent. The first figure shows a shift by +10% for each color and the second figure -10%.

Similar to the brightness gradients but the following saturation gradients show a change of the Decimal color 14334650 by changing the saturation by 10% instead.

 14334650

 14334650

16777215

 12492703

 16773874

 10716549

 8940652

 7295828

 5651516

 4072999

 2626066

 655360

 0

 14334650

 14334650

 14328996

 14340304

 14323342

 14345958

 14317945

 14351355

 14312291

 14352383

 14306637

 14300983

 14295329

 14289932

 14286848

Harmonies

Analogous

The Analogous color harmony consists of three colors that are next to each other on the color wheel.



14072518



14334650



14138544

Triad

The Triadic color harmony groups three colors that are evenly spaced from another and form a triangle on the color wheel.



14334650



11912883



11650263

Complementary

The Complementary color scheme is a pair of colors which are on the opposite of each other on the color wheel.



14334650



12245722

Split Complementary

Split-complementary colors differ from the complementary color scheme. The scheme consists of three colors, the original color and two neighbors of the complement color.



11061202



14334650



11192509

Square

The Square scheme is like the rectangle color scheme, but the four colors are evenly spaced on the color wheel.



14334650



12764076



10864841



12566742

Rectangle

The Rectangle color scheme consists of four colors that form a rectangle on the color wheel.



14334650



13811372



10864841



11388374

Sweetspot

The Sweet Spot groups the original color and five complimentary colors.



14334650



16774645



14334682



8419705



0



8421504

Same Dimension

The Same Dimension uses a secret algorithm to generate beautiful new colors.



14334650



16765393



14338746



7234403



11337728



3014656

Inverse Universe

The Inverse Universe completely reimagines the original color for something new.



12245722



13762559



12241626



6516334



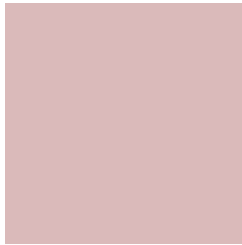
44461



11822

Previews

White Background



This preview shows how the Decimal color 14334650 looks on a white background.

Color Contrast Check

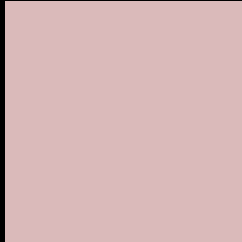
Large Text (above 18pt) WCAG AA × Fail

Any Text WCAG AA × Fail

Large Text (above 18pt) WCAG AAA × Fail

Any Text WCAG AAA × Fail

Black Background



This preview shows how the Decimal color 14334650 looks on a black background.

Color Contrast Check

Large Text (above 18pt) WCAG AA ✓ Pass

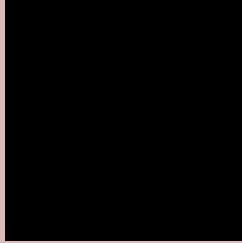
Any Text WCAG AA ✓ Pass

Large Text (above 18pt) WCAG AAA ✓ Pass

Any Text WCAG AAA ✓ Pass

If you want to check with other color combinations, try the [Color Contrast Checker](#).

Decimal 14334650 Background



This preview shows how black text looks on a background with the Decimal color 14334650.




This preview shows how white text looks on a background with the Decimal color 14334650.

Color Blindness Simulation

Color vision deficiency is a very complex topic, and I could not describe the different causes any better than Wikipedia does, so if you want to learn more, you should check out their [article about color blindness](#).

Dichromacy





Tritanopia
14465222

Trichromacy



Original Color
14334650

Protanomaly
13483709

Deuteranomaly
14203834

Tritanomaly
14399938

Monochromacy



Original Color
14334650

Achromatopsia
12895428

Achromatomaly
13418688

CSS Examples

Text

The CSS property to change the color of the text to Decimal 14334650 is called "color". The color property can be set on classes, ids or directly on the HTML element.

This example shows how text in the color #DABABA looks like.

```
.text, #text, p{  
  color:#DABABA  
}
```

If you want to add a text shadow in that color use the text-shadow property, you can generate a text shadow directly with our [CSS Text Shadow Generator](#).

Here you see how black text with a 4 pixel #DABABA colored shadow looks like.

```
.shadow{ text-shadow: 4px 4px 2px #DABABA
}
```

Border

The CSS property to change the border of an element to Decimal 14334650 is called "border". The border property can be set on classes, ids or directly on the HTML element.

This example shows the color as border, it can be applied via the CSS property "border" or "border-color".

```
.border, #border, table{ border:4px solid
#DABABA }
```

If only the border color should be changed use the property `border-color`.

```
.border{ border-color:#DABABA }
```

If you want to add a box shadow in that color use:

Here you see how a box with a 4 pixel #DABABA colored shadow looks like.

```
.boxshadow{ -moz-box-shadow:4px 4px 4px  
4px #DABABA; -webkit-box-shadow:4px 4px  
4px 4px #DABABA; box-shadow:4px 4px 4px  
4px #DABABA }
```

Background

The CSS property to change the background color of an element to Decimal 14334650 is called "background". The background property can be set on classes, ids or directly on the HTML element.

```
.background, #background, body{  
background:#DABABA }
```

If only the background color should be changed can be used:

```
.background{ background-color:#DABABA }
```

This example shows the color as background, it is applied via the CSS property "background".

To optimize and compress your CSS code, you can use our [online CSS compressor and optimizer](#) based on csstidy. If you want to create a linear or radial gradient as background or border, check our [CSS Gradient Generator](#).

Hey! You found this booklet interesting? Support Converting Colors with the new Membership Option!

The pro membership hides all ads, plus gives you double the colors in the color bucket, and more awesome pro features!

[Learn more, Memberships starting at \\$2.50/m!](#)

**Follow me
on Twitter!**

@ConvertingColor