

Converting Colors

Decimal(14334922)

Have a look what the booklet for
Decimal(14334922) contains.

Decimal(14334922)	3
<i>Conversions</i>	4
<i>Details</i>	6
<i>Harmonies</i>	11
<i>Previews</i>	23
<i>Color Blindness Simulation</i>	26
<i>CSS Examples</i>	29

Color

Decimal(14334922)

Conversions

Conversions Part 1

Format	Color
Hex	DABBCA
RGB	218, 187, 202
RGB Percent	85%, 73%, 79%
CMY	0.1451, 0.2667, 0.2078
CMYK	0.00, 0.14, 0.07, 0.15
HSL	331°, 30%, 79%
HSV	331°, 14%, 85%
XYZ	57.3444, 54.7103, 63.4149
YIQ	197.9790, 13.6610, 11.2370

Conversions

Conversions Part 2

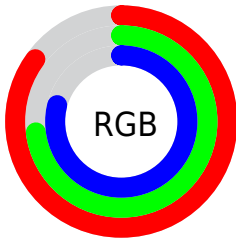
Format	Color
R _Y B	218, 187, 202
Decimal	14334922
CIE Lab	78.87, 13.55, -3.45
CIE LCh	79, 13.985, 345.736
Yxy	54.7103, 0.3268, 0.3118
Android (android.graphics.Color)	4292525002 (0xFFDABBCA)
YUV	197.9790, 1.9824, 17.5584
Hunter-Lab	73.9664, 8.9456, 0.9444

Details

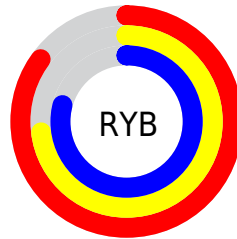
The Decimal color **14334922** is a light color, and the websafe version is hex **FFCCCC**. A complement of this color would be **12311243**, and the grayscale version is **13027014**.

A 20% lighter version of the original color is **16774143**, and **10716820** is the 20% darker color. If you saturate the color by 10%, you get **14329279**, and if you desaturate by 10%, it is **14340565**.

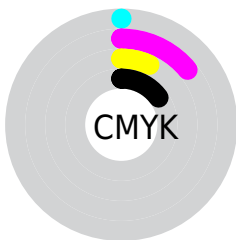
Distribution



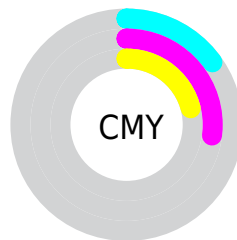
- Red (85%)
- Green (73%)
- Blue (79%)



- Red (85%)
- Yellow (73%)
- Blue (79%)



- Cyan (0%)
- Magenta (14%)
- Yellow (7%)
- Black (15%)



- Cyan (15%)
- Magenta (27%)
- Yellow (21%)

Brightness & Saturation Gradients

These gradients show how the Decimal color 14334922 changes by changing the brightness by 10 percent. The first figure shows a shift by +10% for each color and the second figure -10%.

Similar to the brightness gradients but the following saturation gradients show a change of the Decimal color 14334922 by changing the saturation by 10% instead.

14334922

14334922

16777215

12492975

16774143

10716820

8940666

7296097

5651786

4138803

2626078

1245188

0

 14334922

 14334922

 14329279

 14340565

 14323635

 14346209

 14318248

 14351596

 14312605

 14352375

 14306962

 14352383

 14301318

 14295675

 14290288

 14286953

Harmonies

Analogous

The Analogous color harmony consists of three colors that are next to each other on the color wheel.



13549269



14334922



14662589

Triad

The Triadic color harmony groups three colors that are evenly spaced from another and form a triangle on the color wheel.



14334922



13092266



10799573

Complementary

The Complementary color scheme is a pair of colors which are on the opposite of each other on the color wheel.



14334922



12311243

Split Complementary

Split-complementary colors differ from the complementary color scheme. The scheme consists of three colors, the original color and two neighbors of the complement color.



10734538



14334922



12044465

Square

The Square scheme is like the rectangle color scheme, but the four colors are evenly spaced on the color wheel.



14334922



13942954



11193276



11454172

Rectangle

The Rectangle color scheme consists of four colors that form a rectangle on the color wheel.



14334922



14597301



11193276



10734290

Sweetspot

The Sweet Spot groups the original color and five complimentary colors.



14334922



16774650



13351898



8419708



0



8421504

Same Dimension

The Same Dimension uses a secret algorithm to generate beautiful new colors.



14334922



16766185



14334907



7234408



11337812



3014678

Inverse Universe

The Inverse Universe completely reimagines the original color for something new.



14334922



16766185



12311258



7234408



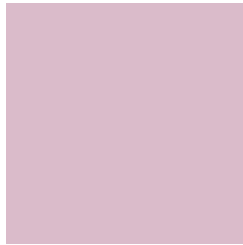
11337812



3014678

Previews

White Background



This preview shows how the Decimal color 14334922 looks on a white background.

Color Contrast Check

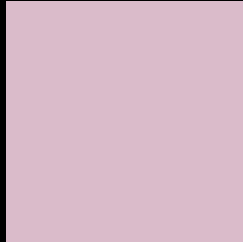
Large Text (above 18pt) WCAG AA × Fail

Any Text WCAG AA × Fail

Large Text (above 18pt) WCAG AAA × Fail

Any Text WCAG AAA × Fail

Black Background



This preview shows how the Decimal color 14334922 looks on a black background.

Color Contrast Check

Large Text (above 18pt) WCAG AA ✓ Pass

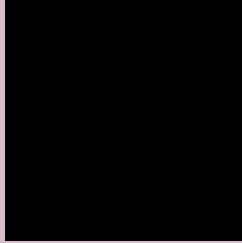
Any Text WCAG AA ✓ Pass

Large Text (above 18pt) WCAG AAA ✓ Pass

Any Text WCAG AAA ✓ Pass

If you want to check with other color combinations, try the [Color Contrast Checker](#).

Decimal 14334922 Background



This preview shows how black text looks on a background with the Decimal color 14334922.




This preview shows how white text looks on a background with the Decimal color 14334922.

Color Blindness Simulation

Color vision deficiency is a very complex topic, and I could not describe the different causes any better than Wikipedia does, so if you want to learn more, you should check out their [article about color blindness](#).

Dichromacy





Tritanopia
14334922

Trichromacy



Original Color
14334922

Protanomaly
13418445

Deuteranomaly
14073034

Tritanomaly
14334922

Monochromacy



Original Color
14334922

Achromatopsia
13027014

Achromatomaly
13484743

CSS Examples

Text

The CSS property to change the color of the text to Decimal 14334922 is called "color". The color property can be set on classes, ids or directly on the HTML element.

This example shows how text in the color #DABBCA looks like.

```
.text, #text, p{  
  color:#DABBCA  
}
```

If you want to add a text shadow in that color use the text-shadow property, you can generate a text shadow directly with our [CSS Text Shadow Generator](#).

Here you see how black text with a 4 pixel #DABBCA colored shadow looks like.

```
.shadow{ text-shadow: 4px 4px 2px #DABBCA
}
```

Border

The CSS property to change the border of an element to Decimal 14334922 is called "border". The border property can be set on classes, ids or directly on the HTML element.

This example shows the color as border, it can be applied via the CSS property "border" or "border-color".

```
.border, #border, table{ border:4px solid
#DABBCA }
```

If only the border color should be changed use the property `border-color`.

```
.border{ border-color:#DABBCA }
```

If you want to add a box shadow in that color use:

Here you see how a box with a 4 pixel #DABBCA colored shadow looks like.

```
.boxshadow{ -moz-box-shadow:4px 4px 4px  
4px #DABBCA; -webkit-box-shadow:4px 4px  
4px 4px #DABBCA; box-shadow:4px 4px 4px  
4px #DABBCA }
```

Background

The CSS property to change the background color of an element to Decimal 14334922 is called "background". The background property can be set on classes, ids or directly on the HTML element.

```
.background, #background, body{  
background:#DABBCA }
```

If only the background color should be changed can be used:

```
.background{ background-color:#DABBCA }
```

This example shows the color as background, it is applied via the CSS property "background".

To optimize and compress your CSS code, you can use our [online CSS compressor and optimizer](#) based on csstidy. If you want to create a linear or radial gradient as background or border, check our [CSS Gradient Generator](#).

Hey! You found this booklet interesting? Support Converting Colors with the new Membership Option!

The pro membership hides all ads, plus gives you double the colors in the color bucket, and more awesome pro features!

[Learn more, Memberships starting at \\$2.50/m!](#)

**Follow me
on Twitter!**

@ConvertingColor