

Converting Colors

Decimal(14335164)

Have a look what the booklet for
Decimal(14335164) contains.

Decimal(14335164)	3
<i>Conversions</i>	4
<i>Details</i>	6
<i>Harmonies</i>	11
<i>Previews</i>	23
<i>Color Blindness Simulation</i>	26
<i>CSS Examples</i>	29

Color

Decimal(14335164)

Conversions

Conversions Part 1

Format	Color
Hex	DABCBC
RGB	218, 188, 188
RGB Percent	85%, 74%, 74%
CMY	0.1451, 0.2627, 0.2627
CMYK	0.00, 0.14, 0.14, 0.15
HSL	0°, 29%, 80%
HSV	0°, 14%, 85%
XYZ	55.9738, 54.5027, 55.1469
YIQ	196.9700, 17.8800, 6.3600

Conversions

Conversions Part 2

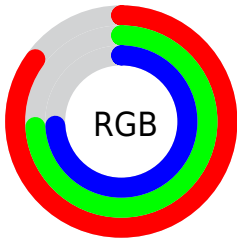
Format	Color
R_{YB}	218, 188, 188
Decimal	14335164
CIE Lab	78.75, 10.68, 3.95
CIE LCh	79, 11.385, 20.281
Yxy	54.5027, 0.3380, 0.3291
Android (android.graphics.Color)	4292525244 (0xFFDABCBC)
YUV	196.9700, -4.4222, 18.4433
Hunter-Lab	73.8259, 6.1407, 7.3894

Details

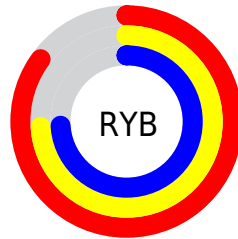
The Decimal color **14335164** is a light color, and the websafe version is hex **FFCCCC**. A complement of this color would be **12376794**, and the grayscale version is **12961221**.

A 20% lighter version of the original color is **16774388**, and **10717063** is the 20% darker color. If you saturate the color by 10%, you get **14329510**, and if you desaturate by 10%, it is **14340818**.

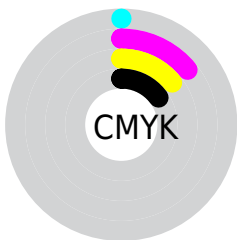
Distribution



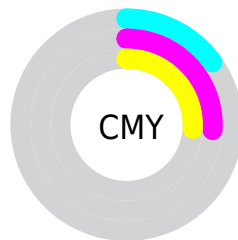
- Red (85%)
- Green (74%)
- Blue (74%)



- Red (85%)
- Yellow (74%)
- Blue (74%)



- Cyan (0%)
- Magenta (14%)
- Yellow (14%)
- Black (15%)



- Cyan (15%)
- Magenta (26%)
- Yellow (26%)

Brightness & Saturation Gradients

These gradients show how the Decimal color 14335164 changes by changing the brightness by 10 percent. The first figure shows a shift by +10% for each color and the second figure -10%.

Similar to the brightness gradients but the following saturation gradients show a change of the Decimal color 14335164 by changing the saturation by 10% instead.

 14335164

 14335164

16777215

 12493217

 16774388

 10717063

 8940910

 7296341

 5652030

 4073512

 2626324

 851968

 0

 14335164

 14335164

 14329510

 14340818

 14323856

 14346472

 14318459

 14351869

 14312805

 14352383

 14307151

 14301497

 14295843

 14290446

 14286848

Harmonies

Analogous

The Analogous color harmony consists of three colors that are next to each other on the color wheel.



14138567



14335164



14139059

Triad

The Triadic color harmony groups three colors that are evenly spaced from another and form a triangle on the color wheel.



14335164



12109749



11847127

Complementary

The Complementary color scheme is a pair of colors which are on the opposite of each other on the color wheel.



14335164



12376794

Split Complementary

Split-complementary colors differ from the complementary color scheme. The scheme consists of three colors, the original color and two neighbors of the complement color.



11258067



14335164



11454911

Square

The Square scheme is like the rectangle color scheme, but the four colors are evenly spaced on the color wheel.



14335164



12895407



11127242



12698071

Rectangle

The Rectangle color scheme consists of four colors that form a rectangle on the color wheel.



14335164



13811887



11127242



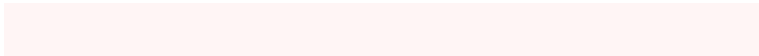
11585238

Sweetspot

The Sweet Spot groups the original color and five complimentary colors.



14335164



16774645



14335194



8419705



0



8421504

Same Dimension

The Same Dimension uses a secret algorithm to generate beautiful new colors.



14335164



16766164



14339004



7234403



11337728



3014656

Inverse Universe

The Inverse Universe completely reimagines the original color for something new.



12376794



13959167



12372954



6516334



44461



11822

Previews

White Background



This preview shows how the Decimal color 14335164 looks on a white background.

Color Contrast Check

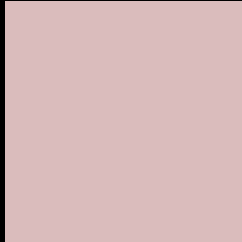
Large Text (above 18pt) WCAG AA × Fail

Any Text WCAG AA × Fail

Large Text (above 18pt) WCAG AAA × Fail

Any Text WCAG AAA × Fail

Black Background



This preview shows how the Decimal color 14335164 looks on a black background.

Color Contrast Check

Large Text (above 18pt) WCAG AA ✓ Pass

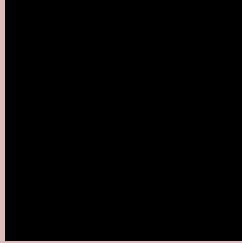
Any Text WCAG AA ✓ Pass

Large Text (above 18pt) WCAG AAA ✓ Pass

Any Text WCAG AAA ✓ Pass

If you want to check with other color combinations, try the [Color Contrast Checker](#).

Decimal 14335164 Background



This preview shows how black text looks on a background with the Decimal color 14335164.



This preview shows how white text looks on a background with the Decimal color 14335164.

Color Blindness Simulation

Color vision deficiency is a very complex topic, and I could not describe the different causes any better than Wikipedia does, so if you want to learn more, you should check out their [article about color blindness](#).

Dichromacy





Tritanopia
14465737

Trichromacy



Original Color
14335164

Protanomaly
13549758

Deuteranomaly
14269884

Tritanomaly
14400452

Monochromacy



Original Color
14335164

Achromatopsia
12961221

Achromatomaly
13484738

CSS Examples

Text

The CSS property to change the color of the text to Decimal 14335164 is called "color". The color property can be set on classes, ids or directly on the HTML element.

This example shows how text in the color #DABCBC looks like.

```
.text, #text, p{  
    color:#DABCBC  
}
```

If you want to add a text shadow in that color use the text-shadow property, you can generate a text shadow directly with our [CSS Text Shadow Generator](#).

Here you see how black text with a 4 pixel #DABCBC colored shadow looks like.

```
.shadow{ text-shadow: 4px 4px 2px #DABCBC  
}
```

Border

The CSS property to change the border of an element to Decimal 14335164 is called "border". The border property can be set on classes, ids or directly on the HTML element.

This example shows the color as border, it can be applied via the CSS property "border" or "border-color".

```
.border, #border, table{ border:4px solid  
#DABCBC }
```

If only the border color should be changed use the property `border-color`.

```
.border{ border-color:#DABCBC }
```

If you want to add a box shadow in that color use:

Here you see how a box with a 4 pixel #DABCBC colored shadow looks like.

```
.boxshadow{ -moz-box-shadow:4px 4px 4px  
4px #DABCBC; -webkit-box-shadow:4px 4px  
4px 4px #DABCBC; box-shadow:4px 4px 4px  
4px #DABCBC }
```

Background

The CSS property to change the background color of an element to Decimal 14335164 is called "background". The background property can be set on classes, ids or directly on the HTML element.

```
.background, #background, body{  
background:#DABCBC }
```

If only the background color should be changed can be used:

```
.background{ background-color:#DABCBC }
```

This example shows the color as background, it is applied via the CSS property "background".

To optimize and compress your CSS code, you can use our [online CSS compressor and optimizer](#) based on csstidy. If you want to create a linear or radial gradient as background or border, check our [CSS Gradient Generator](#).

Hey! You found this booklet interesting? Support Converting Colors with the new Membership Option!

The pro membership hides all ads, plus gives you double the colors in the color bucket, and more awesome pro features!

[Learn more, Memberships starting at \\$2.50/m!](#)

**Follow me
on Twitter!**

@ConvertingColor