

Converting Colors

Decimal(14335688)

Have a look what the booklet for
Decimal(14335688) contains.

| | |
|--|----|
| Decimal(14335688) | 3 |
| <i>Conversions</i> | 4 |
| <i>Details</i> | 6 |
| <i>Harmonies</i> | 11 |
| <i>Previews</i> | 23 |
| <i>Color Blindness Simulation</i> | 26 |
| <i>CSS Examples</i> | 29 |

Color

Decimal(14335688)

Conversions

Conversions Part 1

| Format | Color |
|-------------|---------------------------|
| Hex | DABEC8 |
| RGB | 218, 190, 200 |
| RGB Percent | 85%, 75%, 78% |
| CMY | 0.1451, 0.2549, 0.2157 |
| CMYK | 0.00, 0.13, 0.08, 0.15 |
| HSL | 339°, 27%, 80% |
| HSV | 339°, 13%, 85% |
| XYZ | 57.7522, 55.9025, 62.3900 |
| YIQ | 199.5120, 13.4780, 9.0460 |

Conversions

Conversions Part 2

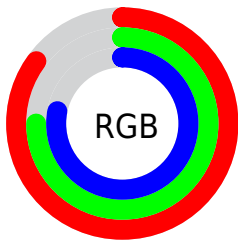
| Format | Color |
|-------------------------------------|------------------------------|
| R_{YB} | 218, 190, 200 |
| Decimal | 14335688 |
| CIE _{Lab} | 79.56, 11.60, -1.36 |
| CIE _{LCh} | 80, 11.684, 353.308 |
| Yxy | 55.9025, 0.3281, 0.3175 |
| Android (android.graphics.Color) | 4292525768 (0xFFDABEC8) |
| YUV | 199.5120, 0.2406, 16.2140 |
| Hunter-Lab | 74.7680, 7.0330, 2.8631 |

Details

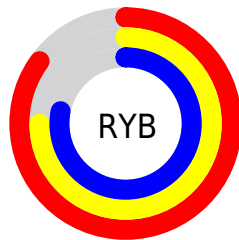
The Decimal color **14335688** is a light color, and the websafe version is hex **CCCCCC**. A complement of this color would be **12507856**, and the grayscale version is **13158600**.

A 20% lighter version of the original color is **16774911**, and **10717586** is the 20% darker color. If you saturate the color by 10%, you get **14330042**, and if you desaturate by 10%, it is **14341334**.

Distribution



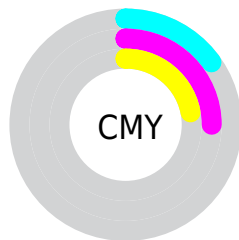
- Red (85%)
- Green (75%)
- Blue (78%)



- Red (85%)
- Yellow (75%)
- Blue (78%)



- Cyan (0%)
- Magenta (13%)
- Yellow (8%)
- Black (15%)



- Cyan (15%)
- Magenta (25%)
- Yellow (22%)

Brightness & Saturation Gradients

These gradients show how the Decimal color 14335688 changes by changing the brightness by 10 percent. The first figure shows a shift by +10% for each color and the second figure -10%.

Similar to the brightness gradients but the following saturation gradients show a change of the Decimal color 14335688 by changing the saturation by 10% instead.

 14335688

16777215

 16774911

 14335688

 12493741

 10717586

 9006968

 7296864

 5652296

 4139314

 2626845

 1376258

 0

 14335688

 14335688

 14330042

 14341334

 14324396

 14346980

 14319006

 14352370

 14313360

 14352383

 14307714

 14302068

 14296422

 14291032

 14286926

Harmonies

Analogous

The Analogous color harmony consists of three colors that are next to each other on the color wheel.



13746386



14335688



14532285

Triad

The Triadic color harmony groups three colors that are evenly spaced from another and form a triangle on the color wheel.



14335688



12961713



11389654

Complementary

The Complementary color scheme is a pair of colors which are on the opposite of each other on the color wheel.



14335688



12507856

Split Complementary

Split-complementary colors differ from the complementary color scheme. The scheme consists of three colors, the original color and two neighbors of the complement color.



11193293



14335688



12110520

Square

The Square scheme is like the rectangle color scheme, but the four colors are evenly spaced on the color wheel.



14335688



13747376



11455682



12044250

Rectangle

The Rectangle color scheme consists of four colors that form a rectangle on the color wheel.



14335688



14401463



11455682



11258836

Sweetspot

The Sweet Spot groups the original color and five complimentary colors.



14335688



16774648



13680346



8419707



0



8421504

Same Dimension

The Same Dimension uses a secret algorithm to generate beautiful new colors.



14335688



16767462



14336702



7234407



11337790



3014672

Inverse Universe

The Inverse Universe completely reimagines the original color for something new.



14335688



16767462



12506842



7234407



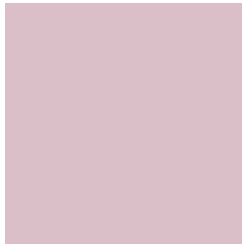
11337790



3014672

Previews

White Background



This preview shows how the Decimal color 14335688 looks on a white background.

Color Contrast Check

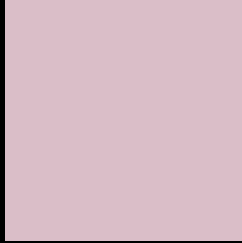
Large Text (above 18pt) WCAG AA × Fail

Any Text WCAG AA × Fail

Large Text (above 18pt) WCAG AAA × Fail

Any Text WCAG AAA × Fail

Black Background



This preview shows how the Decimal color 14335688 looks on a black background.

Color Contrast Check

Large Text (above 18pt) WCAG AA ✓ Pass

Any Text WCAG AA ✓ Pass

Large Text (above 18pt) WCAG AAA ✓ Pass

Any Text WCAG AAA ✓ Pass

If you want to check with other color combinations, try the [Color Contrast Checker](#).

Decimal 14335688 Background



This preview shows how black text looks on a background with the Decimal color 14335688.



This preview shows how white text looks on a background with the Decimal color 14335688.

Color Blindness Simulation

Color vision deficiency is a very complex topic, and I could not describe the different causes any better than Wikipedia does, so if you want to learn more, you should check out their [article about color blindness](#).

Dichromacy



Original Color
14335688

Protanopia
13092044

Deuteranopia
14139336



Tritanopia
14400972

Trichromacy



Original Color
14335688

Protanomaly
13550283

Deuteranomaly
14204872

Tritanomaly
14400971

Monochromacy



Original Color
14335688

Achromatopsia
13158600

Achromatomaly
13616328

CSS Examples

Text

The CSS property to change the color of the text to Decimal 14335688 is called "color". The color property can be set on classes, ids or directly on the HTML element.

This example shows how text in the color #DABEC8 looks like.

```
.text, #text, p{  
    color:#DABEC8  
}
```

If you want to add a text shadow in that color use the text-shadow property, you can generate a text shadow directly with our [CSS Text Shadow Generator](#).

Here you see how black text with a 4 pixel #DABEC8 colored shadow looks like.

```
.shadow{ text-shadow: 4px 4px 2px #DABEC8
}
```

Border

The CSS property to change the border of an element to Decimal 14335688 is called "border". The border property can be set on classes, ids or directly on the HTML element.

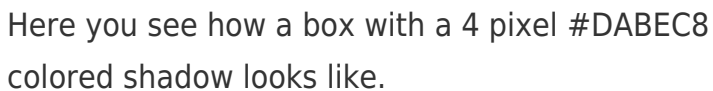
This example shows the color as border, it can be applied via the CSS property "border" or "border-color".

```
.border, #border, table{ border:4px solid
#DABEC8 }
```

If only the border color should be changed use the property `border-color`.

```
.border{ border-color:#DABEC8 }
```

If you want to add a box shadow in that color use:



Here you see how a box with a 4 pixel #DABEC8 colored shadow looks like.

```
.boxshadow{ -moz-box-shadow:4px 4px 4px  
4px #DABEC8; -webkit-box-shadow:4px 4px  
4px 4px #DABEC8; box-shadow:4px 4px 4px  
4px #DABEC8 }
```

Background

The CSS property to change the background color of an element to Decimal 14335688 is called "background". The background property can be set on classes, ids or directly on the HTML element.

```
.background, #background, body{  
background:#DABEC8 }
```

If only the background color should be changed can be used:

```
.background{ background-color:#DABEC8 }
```

This example shows the color as background, it is applied via the CSS property "background".

To optimize and compress your CSS code, you can use our [online CSS compressor and optimizer](#) based on csstidy. If you want to create a linear or radial gradient as background or border, check our [CSS Gradient Generator](#).

Hey! You found this booklet interesting? Support Converting Colors with the new Membership Option!

The pro membership hides all ads, plus gives you double the colors in the color bucket, and more awesome pro features!

[Learn more, Memberships starting at \\$2.50/m!](#)

**Follow me
on Twitter!**

@ConvertingColor