

Converting Colors

Decimal(14335923)

Have a look what the booklet for
Decimal(14335923) contains.

Decimal(14335923)	3
<i>Conversions</i>	4
<i>Details</i>	6
<i>Harmonies</i>	11
<i>Previews</i>	23
<i>Color Blindness Simulation</i>	26
<i>CSS Examples</i>	29

Color

Decimal(14335923)

Conversions

Conversions Part 1

Format	Color
Hex	DABFB3
RGB	218, 191, 179
RGB Percent	85%, 75%, 70%
CMY	0.1451, 0.2510, 0.2980
CMYK	0.00, 0.12, 0.18, 0.15
HSL	18°, 35%, 78%
HSV	18°, 18%, 85%
XYZ	55.6809, 55.4217, 50.4106
YIQ	197.7050, 19.9440, 1.9920

Conversions

Conversions Part 2

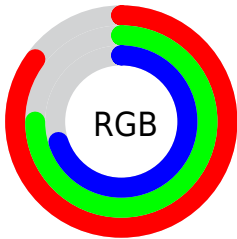
Format	Color
R_{YB}	218, 196, 179
Decimal	14335923
CIE Lab	79.28, 7.66, 9.56
CIE LCh	79, 12.253, 51.284
Yxy	55.4217, 0.3447, 0.3431
Android (android.graphics.Color)	4292526003 (0xFFDABFB3)
YUV	197.7050, -9.2216, 17.7987
Hunter-Lab	74.4458, 3.2271, 11.9641

Details

The Decimal color **14335923** is a light color, and the websafe version is hex **CCCCCC**. A complement of this color would be **11783898**, and the grayscale version is **13027014**.

A 20% lighter version of the original color is **16775147**, and **10717822** is the 20% darker color. If you saturate the color by 10%, you get **14332061**, and if you desaturate by 10%, it is **14339785**.

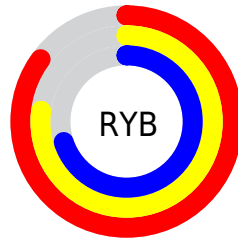
Distribution



Red (85%)

Green (75%)

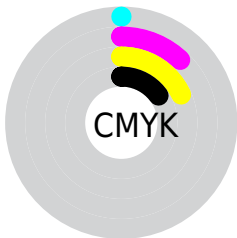
Blue (70%)



Red (85%)

Yellow (77%)

Blue (70%)

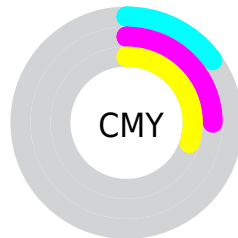


Cyan (0%)

Magenta (12%)

Yellow (18%)

Black (15%)



Cyan (15%)

Magenta (25%)

Yellow (30%)

Brightness & Saturation Gradients

These gradients show how the Decimal color 14335923 changes by changing the brightness by 10 percent. The first figure shows a shift by +10% for each color and the second figure -10%.

Similar to the brightness gradients but the following saturation gradients show a change of the Decimal color 14335923 by changing the saturation by 10% instead.

 14335923

 14335923

16777215

 12493976

 16775147

 10717822

 8941669

 7231565

 5652535

 4074017

 2627083

 786432

 0

 14335923

 14335923

 14332061

 14339785

 14328199

 14343647

 14324338

 14347508

 14320476

 14351359

 14316614

 14352383

 14312496

 14308634

 14304773

 14304000

Harmonies

Analogous

The Analogous color harmony consists of three colors that are next to each other on the color wheel.



14532029



14335923



13746862

Triad

The Triadic color harmony groups three colors that are evenly spaced from another and form a triangle on the color wheel.



14335923



11389889



12829658

Complementary

The Complementary color scheme is a pair of colors which are on the opposite of each other on the color wheel.



14335923



11783898

Split Complementary

Split-complementary colors differ from the complementary color scheme. The scheme consists of three colors, the original color and two neighbors of the complement color.



11912923



14335923



11062220

Square

The Square scheme is like the rectangle color scheme, but the four colors are evenly spaced on the color wheel.



14335923



12110262



11258326



13680595

Rectangle

The Rectangle color scheme consists of four colors that form a rectangle on the color wheel.



14335923



13223342



11258326



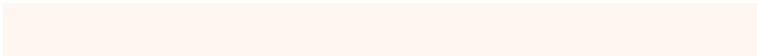
12502235

Sweetspot

The Sweet Spot groups the original color and five complimentary colors.



14335923



16774898



14332878



8419960



0



8421504

Same Dimension

The Same Dimension uses a secret algorithm to generate beautiful new colors.



14335923



16767689



14340787



7235171



11351296



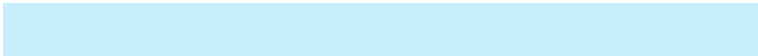
3018240

Inverse Universe

The Inverse Universe completely reimagines the original color for something new.



11783898



13234175



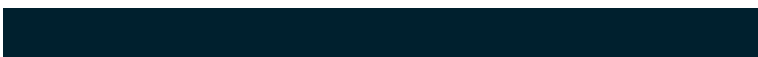
11779034



6515310



30893



8238

Previews

White Background



This preview shows how the Decimal color 14335923 looks on a white background.

Color Contrast Check

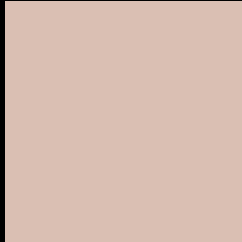
Large Text (above 18pt) WCAG AA × Fail

Any Text WCAG AA × Fail

Large Text (above 18pt) WCAG AAA × Fail

Any Text WCAG AAA × Fail

Black Background



This preview shows how the Decimal color 14335923 looks on a black background.

Color Contrast Check

Large Text (above 18pt) WCAG AA ✓ Pass

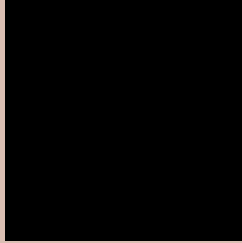
Any Text WCAG AA ✓ Pass

Large Text (above 18pt) WCAG AAA ✓ Pass

Any Text WCAG AAA ✓ Pass

If you want to check with other color combinations, try the [Color Contrast Checker](#).

Decimal 14335923 Background



This preview shows how black text looks on a background with the Decimal color 14335923.




This preview shows how white text looks on a background with the Decimal color 14335923.

Color Blindness Simulation

Color vision deficiency is a very complex topic, and I could not describe the different causes any better than Wikipedia does, so if you want to learn more, you should check out their [article about color blindness](#).

Dichromacy





Tritanopia
14531786

Trichromacy



Original Color
14335923

Protanomaly
13746869

Deuteranomaly
14532275

Tritanomaly
14466498

Monochromacy



Original Color
14335923

Achromatopsia
13027014

Achromatomaly
13484991

CSS Examples

Text

The CSS property to change the color of the text to Decimal 14335923 is called "color". The color property can be set on classes, ids or directly on the HTML element.

This example shows how text in the color #DABFB3 looks like.

```
.text, #text, p{  
    color:#DABFB3  
}
```

If you want to add a text shadow in that color use the text-shadow property, you can generate a text shadow directly with our [CSS Text Shadow Generator](#).

Here you see how black text with a 4 pixel #DABFB3 colored shadow looks like.

```
.shadow{ text-shadow: 4px 4px 2px #DABFB3
}
```

Border

The CSS property to change the border of an element to Decimal 14335923 is called "border". The border property can be set on classes, ids or directly on the HTML element.

This example shows the color as border, it can be applied via the CSS property "border" or "border-color".

```
.border, #border, table{ border:4px solid
#DABFB3 }
```

If only the border color should be changed use the property `border-color`.

```
.border{ border-color:#DABFB3 }
```

If you want to add a box shadow in that color use:

Here you see how a box with a 4 pixel #DABFB3 colored shadow looks like.

```
.boxshadow{ -moz-box-shadow:4px 4px 4px  
4px #DABFB3; -webkit-box-shadow:4px 4px  
4px 4px #DABFB3; box-shadow:4px 4px 4px  
4px #DABFB3 }
```

Background

The CSS property to change the background color of an element to Decimal 14335923 is called "background". The background property can be set on classes, ids or directly on the HTML element.

```
.background, #background, body{  
background:#DABFB3 }
```

If only the background color should be changed can be used:

```
.background{ background-color:#DABFB3 }
```

This example shows the color as background, it is applied via the CSS property "background".

To optimize and compress your CSS code, you can use our [online CSS compressor and optimizer](#) based on csstidy. If you want to create a linear or radial gradient as background or border, check our [CSS Gradient Generator](#).

Hey! You found this booklet interesting? Support Converting Colors with the new Membership Option!

The pro membership hides all ads, plus gives you double the colors in the color bucket, and more awesome pro features!

[Learn more, Memberships starting at \\$2.50/m!](#)

**Follow me
on Twitter!**

@ConvertingColor